



# Dallas County Health and Human Services 2017–2018 Influenza Surveillance Report

Week 44 ending November 04, 2017

## Epidemiologic Summary

- Influenza activity is increasing in Dallas County with 5.7% of tests returning positive during week 44. Nationally, 3.4% of specimens reported to CDC were positive for influenza.
- Daily numbers of emergency department visits for influenza-like illness in Dallas County were slightly above baseline levels and 21 influenza-associated hospitalizations were reported during week 44.
- No influenza-associated deaths were reported in week 44. No influenza-associated pediatric deaths have been reported during the 2017-2018 season in Dallas County.
- RSV activity increased with 12.3% of tests from area surveillance sites testing positive.

**Table 1.** Summary of Influenza Surveillance from Dallas County Hospitals and Hospital Laboratories

Week Ending	9/30	10/07	10/14	10/21	10/28	11/04	9/10/17 – Present
CDC Week	39	40	41	42	43*	44*	
<b>Total Influenza PCR Tests</b>	347	380	450	511	531	646	3,507
Number of positive PCR tests	8	0	6	9	17	24	72
Percent of positive PCR tests	2.3	0.0	1.3	1.8	3.2	3.7	
<b>Total Rapid Influenza Diagnostic Tests</b>	224	365	438	537	606	632	3,046
Number of positive RIDTs	3	17	22	22	29	52	151
Percent of positive RIDTs	1.3	4.7	5.0	4.1	4.8	8.2	
<b>Total Influenza Tests Performed</b>	603	781	926	1,087	1,175	1,326	6,837
Total positive influenza tests <sup>1</sup>	11	17	28	31	46	76	223
Percent positive influenza tests	1.8	2.2	3.0	2.9	3.9	5.7	
Positive influenza A tests <sup>2</sup>	8	6	19	28	30	60	162
Positive influenza B tests	3	11	9	3	16	16	61
Non-differentiated influenza tests <sup>3</sup>	0	0	0	0	0	0	0

<sup>1</sup> Includes positive rapid antigen, PCR, DFA, or culture results

<sup>2</sup> Further subtyping is performed only by select hospital laboratories for specimens referred to DCHHS by institutions for PCR-testing

<sup>3</sup> Non-differentiated refers to rapid test results which did not differentiate between influenza A and B

**Table 2.** Summary of Influenza Hospitalizations and Deaths from Dallas County Hospitals, Vital Statistics and Medical Examiner's Office

Week Ending	9/30	10/07	10/14	10/21	10/28	11/04	9/10/17 – Present
CDC Week	39	40	41	42	43*	44*	
Influenza hospitalizations <sup>4</sup>	5	2	9	7	12	21	62
Confirmed pediatric deaths <sup>5</sup>	0	0	0	0	0	0	0
Confirmed adult deaths <sup>6</sup>	0	0	0	0	0	0	0
Possible influenza-associated deaths <sup>7</sup>	0	0	0	0	0	0	0

<sup>4</sup> Reflects all influenza-associated hospitalizations reported from hospitals located within Dallas County by week of any positive influenza tests

<sup>5</sup> Confirmed influenza-associated deaths of Dallas County residents <18 years of age

<sup>6</sup> Confirmed influenza-associated deaths as defined by a positive laboratory test, compatible symptoms, and clear progression from illness to death, or determination by the County Medical Examiner's office (ME) of no alternate cause of death

<sup>7</sup> Possible influenza-associated deaths are defined as cases with laboratory-confirmed influenza, but pending final autopsy results for determination of primary cause of death

Data source(s): 15 Hospitals in Dallas County

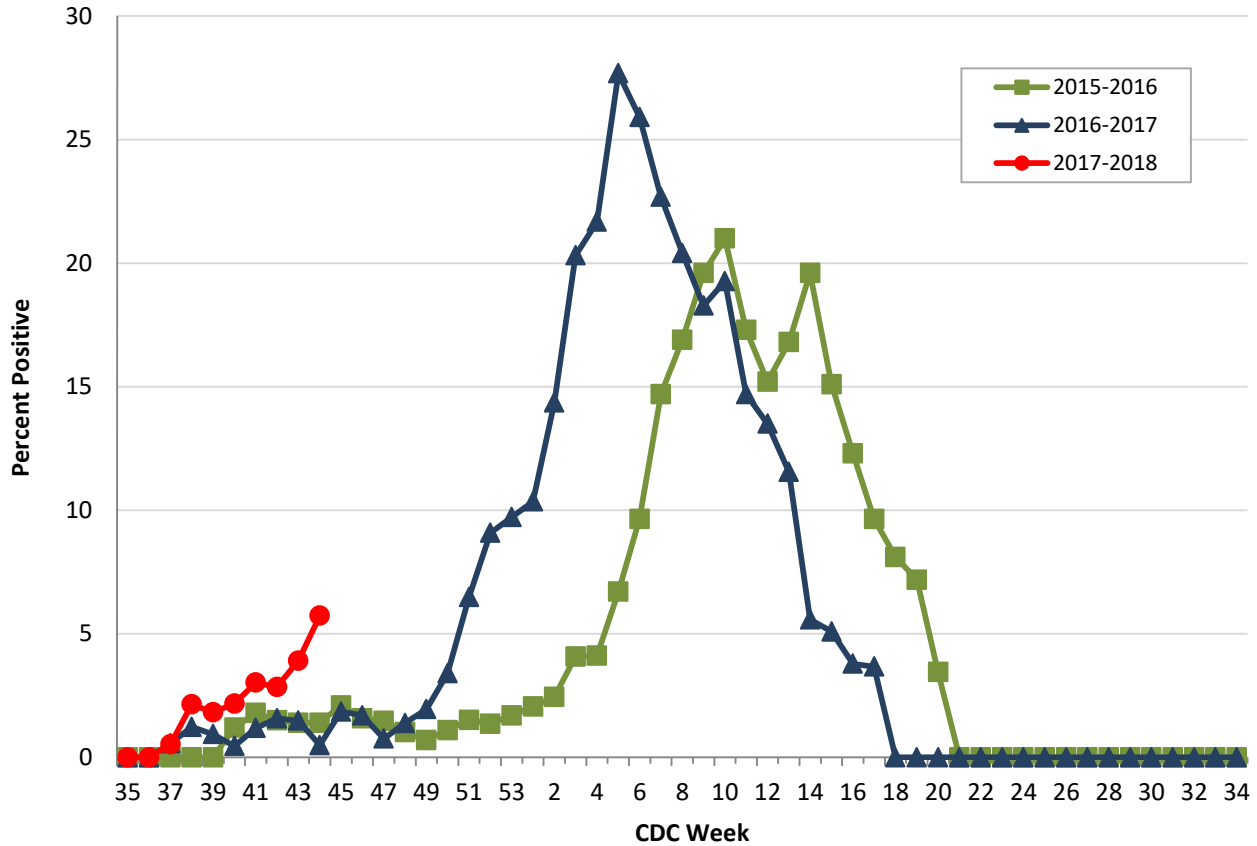
**Table 3.** Confirmed Influenza-associated Pediatric and Adult Deaths, Dallas County: 2011–2018 Seasons

	2012–2013	2013–2014	2014–2015	2015–2016	2016–2017	2017–2018
Pediatric	3	3	0	1	1	0
Adult	6	55	19	14	16	0

Data source(s): Reports of confirmed influenza-associated deaths, as defined in Table 2.

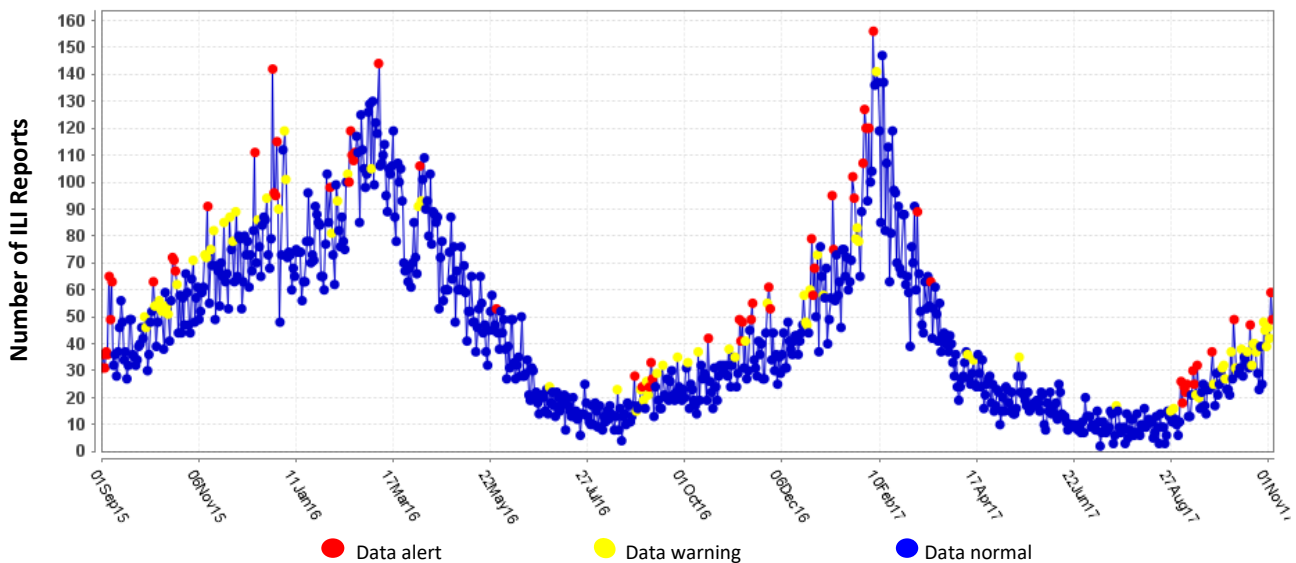
\*Indicates preliminary results which are subject to change with late-arriving data from surveillance sites designated for DCHHS' seasonal influenza program

**Figure 1.** Influenza Positive Tests Reported to DCHHS by Hospital Laboratories: 2015–2018 Seasons



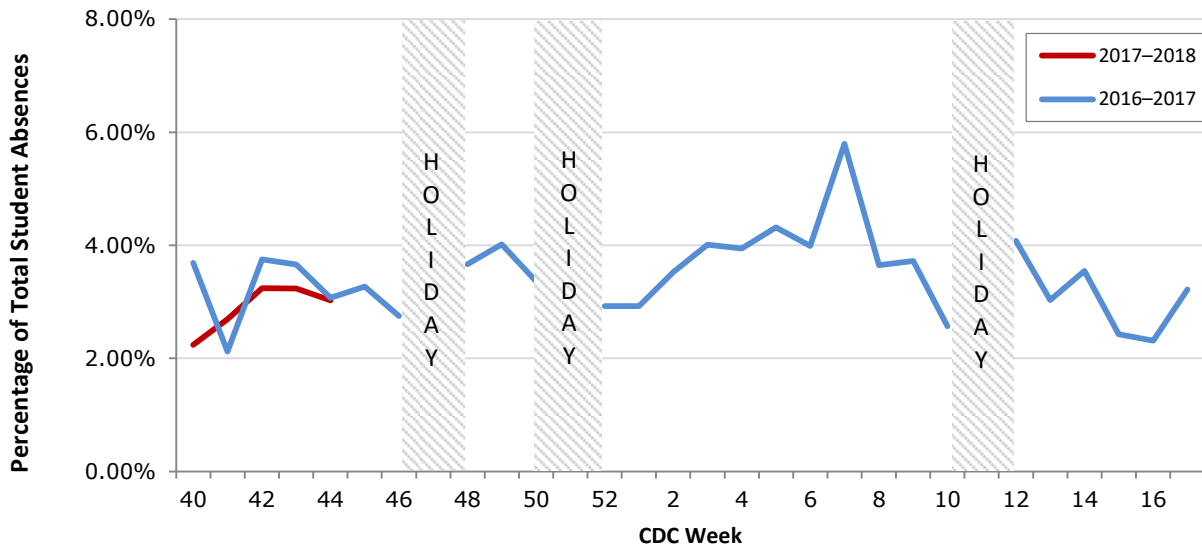
Note: For Figure 1 and all subsequent trend overlays there is no week 53 for the 2015-2016 or 2016-17 influenza seasons, therefore week 53 data point for those seasons is an average of week 52 and week 1.

**Figure 2.** Syndromic Surveillance of Emergency Department Visits for Influenza-like Illness (ILI), Dallas County: September 1, 2015 – November 04, 2017

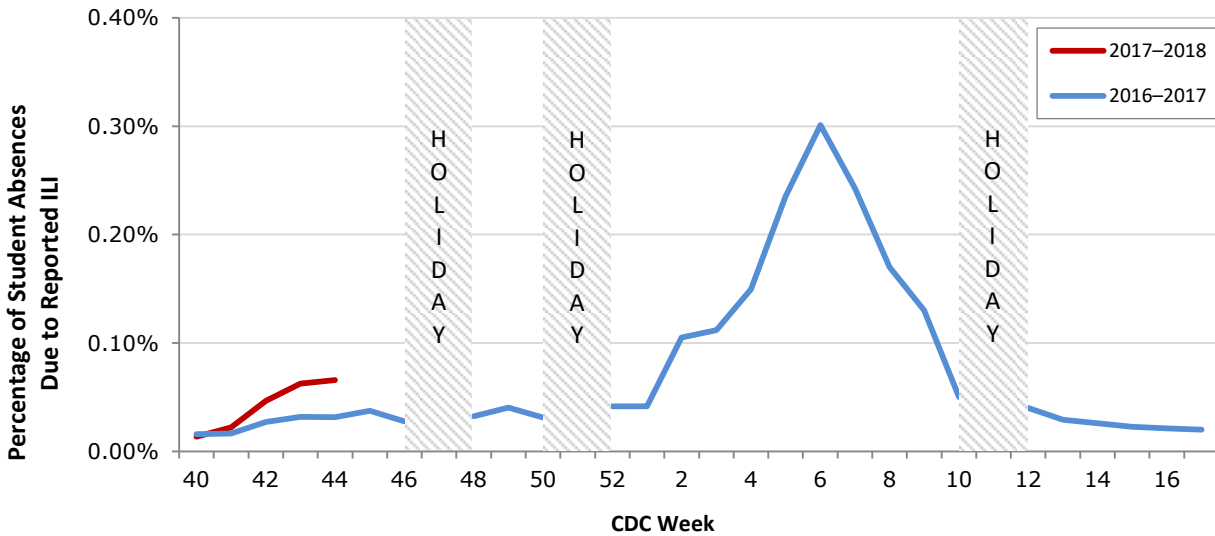


Data source: 18 emergency departments in Dallas County hospitals participating in the Electronic Surveillance System for the Early Notification of Community-based Epidemics (ESSENCE) voluntarily reporting the numbers of persons presenting with self-reported chief complaints of ILI.

**Figure 3.** Percentage of Student Absences by Week, Dallas County: 2016-2017 and 2017-2018



**Figure 4.** Percentage of Student Absences Due to ILI by Week, Dallas County: 2016-2017 and 2017-2018



Data source: Voluntary reporting from Independent School Districts representing over 510 elementary, middle, and secondary schools and over 420,000 students in Dallas County

**Table 4.** Influenza Typing and Subtyping from Cumulative Dallas County, Texas, and U.S. Laboratory Surveillance Data: 2017-2018 Season

	Dallas <sup>1</sup> (n=12)	Texas <sup>2</sup> (n=280)	U.S. <sup>3</sup> (n=836)
Influenza A	10 (83.3%)	202 (72.1%)	734 (87.8%)
H1N1 2009 subtype	2 (20.0%)	18 (29.0%)	74 (10.2%)
H3N2 subtype	8 (80.0%)	44 (71.0%)	655 (89.8%)
Not subtyped	0	140	16
Influenza B	2 (16.7%)	78 (27.9%)	101 (12.1%)

<sup>1</sup> DCHHS LRN laboratory PCR testing of designated Dallas County surveillance site isolates

<sup>2</sup> DSHS 2017–2018 Texas Influenza Surveillance Information Activity Report available at <https://www.dshs.state.tx.us/idcu/disease/influenza/surveillance/>

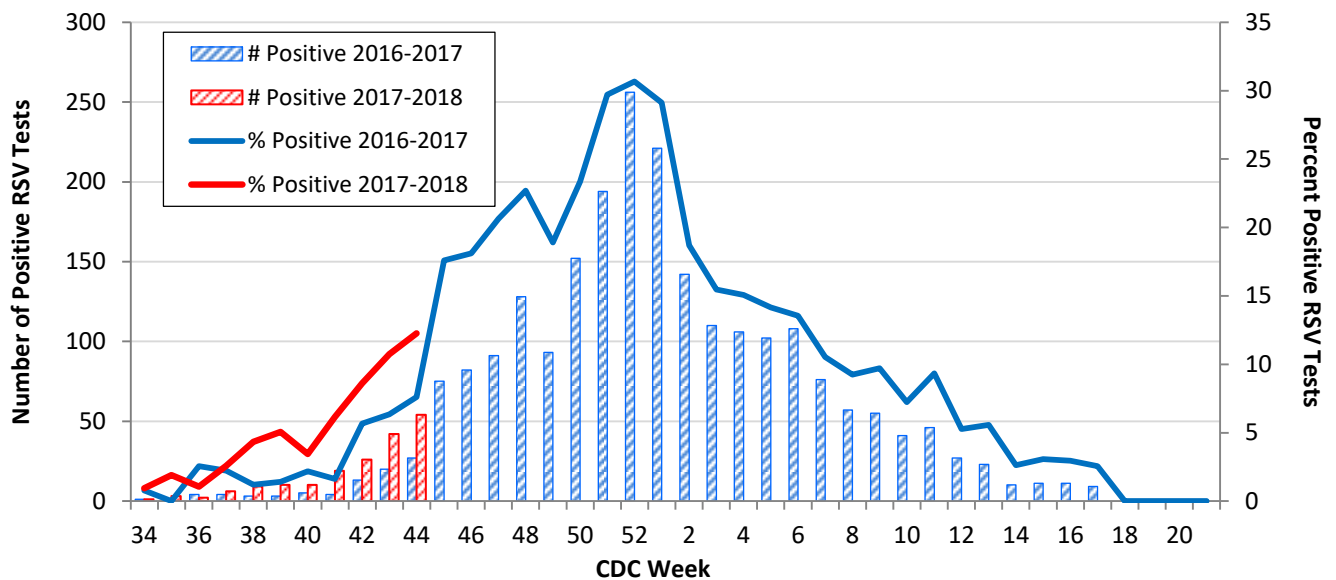
<sup>3</sup> CDC FluView Weekly Influenza Surveillance Report available at <http://www.cdc.gov/flu/weekly/>

**Table 5.** Non-Influenza Respiratory Virus Testing by North Texas Laboratories Reported to NREVSS, Week 44

Virus	Number of Laboratories Reporting	Tests Performed	Total Positive Tests	Percentage of Tests Positive
Adenovirus (respiratory)	4	313	8	2.6%
HMPV	4	313	2	0.6%
Parainfluenza virus	4	313	17	5.4%
Rhinovirus/Enterovirus	4	313	88	28.1%
RSV	4	440	54	12.3%

Data source: National Respiratory and Enteric Virus Surveillance System (NREVSS) and hospitals reporting directly to DCHHS

**Figure 5.** Number and Percent Positive RSV Rapid Antigen and PCR Tests by Week, NREVSS Surveillance Data, North Texas: August 27, 2016 – November 04, 2017



Data source: National Respiratory and Enteric Virus Surveillance System (NREVSS) and hospitals reporting directly to DCHHS

**Table 6.** Number and Percent Positive RSV Rapid Antigen and PCR Tests by Week, NREVSS Surveillance Data, North Texas: August 26, 2017 – November 04, 2017

Week Ending	9/23	9/30	10/07	10/14	10/21	10/28	11/04	8/26/17–Present
CDC Week	38	39	40	41	42	43*	44*	
RSV tests performed weekly	208	198	290	309	302	391	440	2,381
Total positive RSV tests	9	10	10	19	26	42	54	128
Percent positive RSV tests	4.3	5.1	3.5	6.2	8.6	10.7	12.3	

\*Indicates preliminary results which are subject to change as adjustments are made for late-arriving data

Data source: National Respiratory and Enteric Virus Surveillance System (NREVSS)

**Please report any of the following patients to DCHHS within 1 working day:**

- **Hospitalized patients with influenza** (any subtype). Confirmation can be by any laboratory test, rapid antigen, culture, PCR, DFA/IFA, or performed in an outpatient or inpatient laboratory.
- **Deaths of persons with confirmed influenza** (any subtype). We are requesting all pediatric influenza-associated deaths to be reported *immediately* to facilitate specimen procurement and testing.
- Suspected influenza infections involving institutional outbreaks or a resident of any **Long Term Care facility** (please report *immediately*).

Phone: **(214) 819-2004**Email: **[influenza@dallascounty.org](mailto:influenza@dallascounty.org)**