



Dallas County Health and Human Services 2017–2018 Influenza Surveillance Report

Week 52 ending December 30, 2017

Epidemiologic Summary

- Influenza activity remains high in Dallas County with 28.7% of tests returning positive during week 52. Nationally, 25.5% of specimens reported to CDC were positive for influenza.
- Daily numbers of emergency department visits for influenza-like illness in Dallas County have increased and 278 influenza-associated hospitalizations were reported during week 52.
- One influenza-associated death of an adult was reported in week 52, and five were reported in week 1 of 2018. No influenza-associated pediatric deaths have been reported during the 2017-2018 season in Dallas County.
- RSV activity remains high with 22.0% of tests from area surveillance sites testing positive.

Table 1. Summary of Influenza Surveillance from Dallas County Hospitals and Hospital Laboratories

Week Ending	11/25	12/02	12/09	12/16	12/23	12/30	9/10/17 – Present
CDC Week	47	48	49	50	51*	52*	
Total Influenza PCR Tests	696	787	807	1,042	1,400	1,532	11,227
Number of positive PCR tests	41	78	83	177	402	503	1,458
Percent of positive PCR tests	5.9	9.9	10.3	17.0	28.7	32.8	
Total Rapid Influenza Diagnostic Tests	1,130	1,242	1,387	2,069	3,259	3,694	17,553
Number of positive RIDTs	141	189	303	445	1,074	1,023	3,507
Percent of positive RIDTs	12.5	15.2	21.9	21.5	32.0	27.7	
Total Influenza Tests Performed	1,858	2,085	2,257	3,160	4,747	5,310	29,530
Total positive influenza tests ¹	182	267	386	622	1,476	1,526	4,965
Percent positive influenza tests	9.8	12.8	17.1	19.7	31.1	28.7	
Positive influenza A tests ²	145	223	323	546	1,310	1,328	4,262
Positive influenza B tests	37	44	63	76	166	198	703
Non-differentiated influenza tests ³	0	0	0	0	0	0	0

¹ Includes positive rapid antigen, PCR, DFA, or culture results

² Further subtyping is performed only by select hospital laboratories for specimens referred to DCHHS by institutions for PCR-testing

³ Non-differentiated refers to rapid test results which did not differentiate between influenza A and B

Table 2. Summary of Influenza Hospitalizations and Deaths from Dallas County Hospitals, Vital Statistics and Medical Examiner's Office

Week Ending	11/25	12/02	12/09	12/16	12/23	12/30	01/06	9/10/17 – Present
CDC Week	47	48	49	50	51	52*	1*	
Influenza hospitalizations ⁴	33	58	49	88	241	278	N/A	848
Confirmed pediatric deaths ⁵	0	0	0	0	0	0	N/A	0
Confirmed adult deaths ⁶	0	1	1	1	2	1	5	11
Possible influenza-associated deaths ⁷	0	0	0	0	0	0	N/A	0

⁴ Reflects all influenza-associated hospitalizations reported from hospitals located within Dallas County by week of any positive influenza tests; Data source:14 Hospitals in Dallas County

⁵ Confirmed influenza-associated deaths of Dallas County residents <18 years of age

⁶ Confirmed influenza-associated deaths as defined by a positive laboratory test, compatible symptoms, and clear progression from illness to death, or determination by the County Medical Examiner's office (ME) of no alternate cause of death

⁷ Possible influenza-associated deaths are defined as cases with laboratory-confirmed influenza, but pending final autopsy results for determination of primary cause of death

Table 3. Confirmed Influenza-associated Pediatric and Adult Deaths, Dallas County: 2011–2018 Seasons

	2012–2013	2013–2014	2014–2015	2015–2016	2016–2017	2017–2018
Pediatric	3	3	0	1	1	0
Adult	6	55	19	14	16	11

Data source: Reports of confirmed influenza-associated deaths, as defined in Table 2.

*Indicates preliminary results which are subject to change with late-arriving data from surveillance sites designated for DCHHS' seasonal influenza program

Figure 1. Influenza Positive Tests Reported to DCHHS by Hospital Laboratories: 2017 - 2018 Seasons

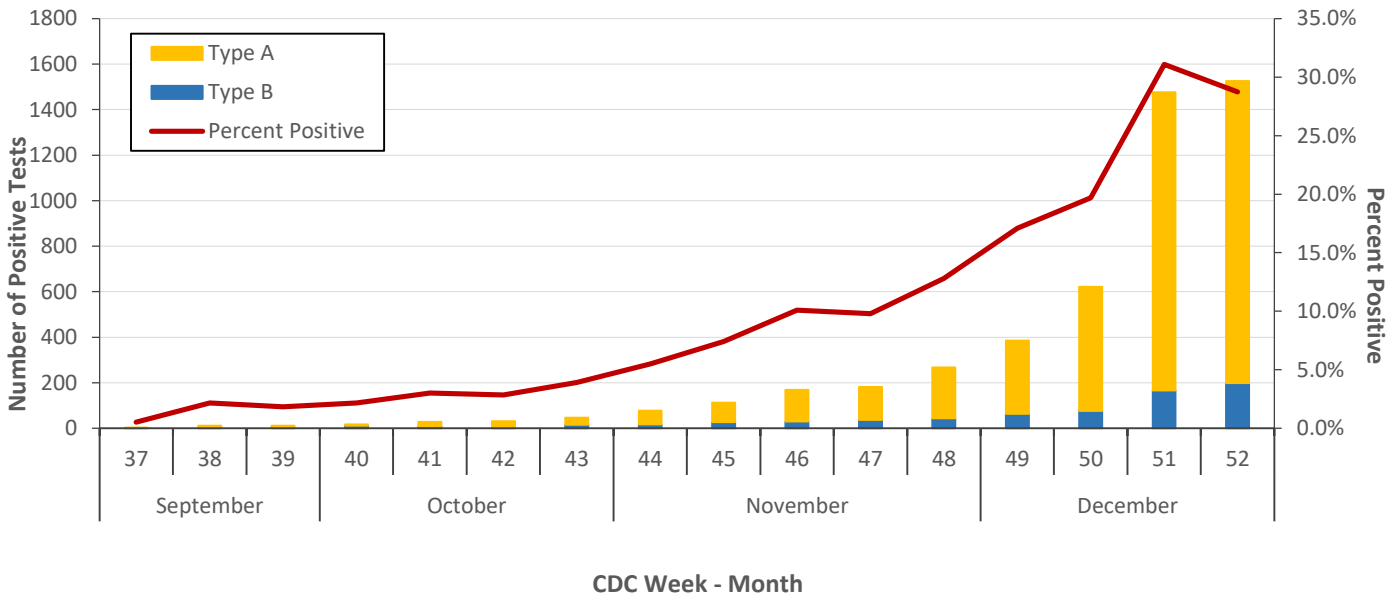
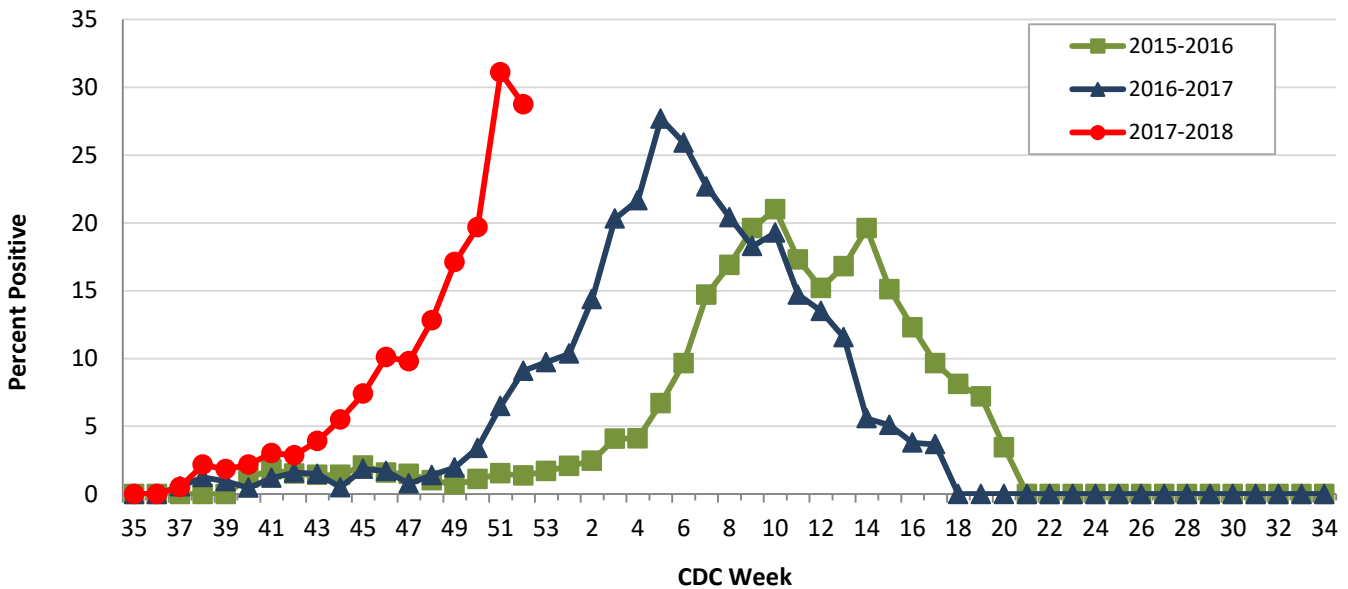


Figure 2. Influenza Positive Tests Reported to DCHHS by Hospital Laboratories: 2015–2018 Seasons



Note: For Figure 2 and all subsequent trend overlays there is no week 53 for the 2015-2016 or 2016-17 influenza seasons, therefore week 53 data point for those seasons is an average of week 52 and week 1.

Table 4. Influenza Typing and Subtyping from Cumulative Dallas County, Texas, and U.S. Laboratory Surveillance Data: 2017-2018 Season

	Dallas ¹ (n=189)	Texas ² (n= 5,585)	U.S. ³ (n=8,893)
Influenza A	171 (90.5%)	4,730 (84.7%)	7,754 (87.2%)
H1N1 2009 subtype	77 (45.3%)	217 (25.7%)	644 (8.4%)
H3N2 subtype	93 (54.7%)	626 (74.3%)	7,012 (91.6%)
Not subtyped	1	3,887	98
Influenza B	19 (10.1%)	855 (15.3%)	1,139 (12.8%)

¹ DCHHS LRN laboratory PCR testing of designated Dallas County surveillance site isolates; counts may not sum to total as samples can test positive for multiple subtypes

² DSHS 2017–2018 Texas Influenza Surveillance Information Activity Report available at <https://www.dshs.state.tx.us/idcu/disease/influenza/surveillance/>

³ CDC FluView Weekly Influenza Surveillance Report available at <http://www.cdc.gov/flu/weekly/>

Figure 3. Hospitalized Influenza Patients by Week of Admission, Dallas County: 2016-2018 Seasons

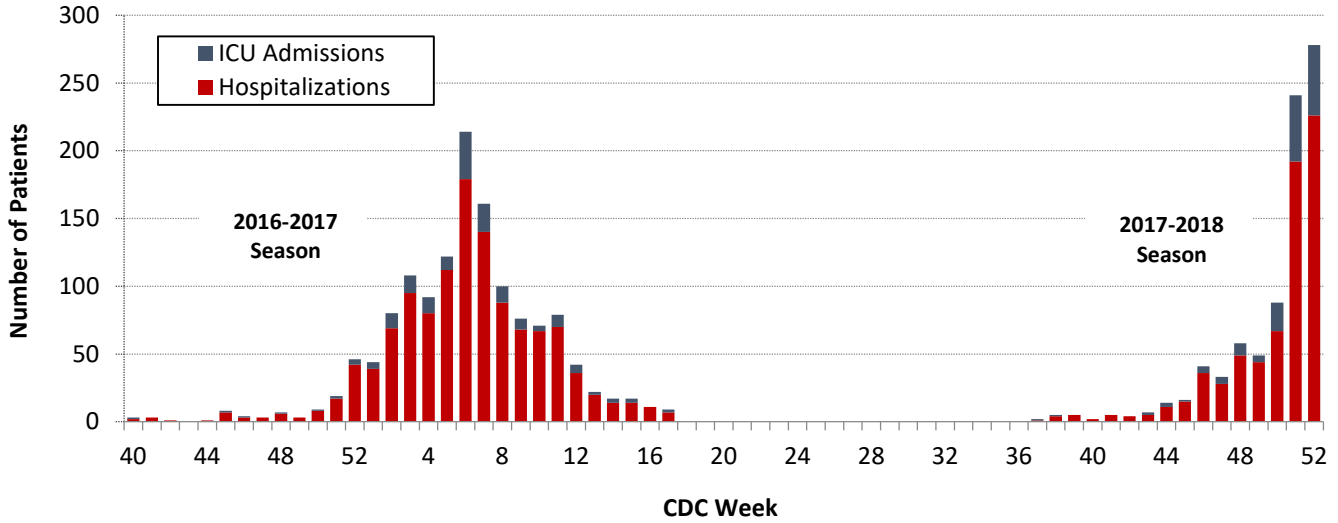


Figure 4. Hospitalized Influenza Patients by Week of Admission, Dallas County: 2013-2018 Seasons

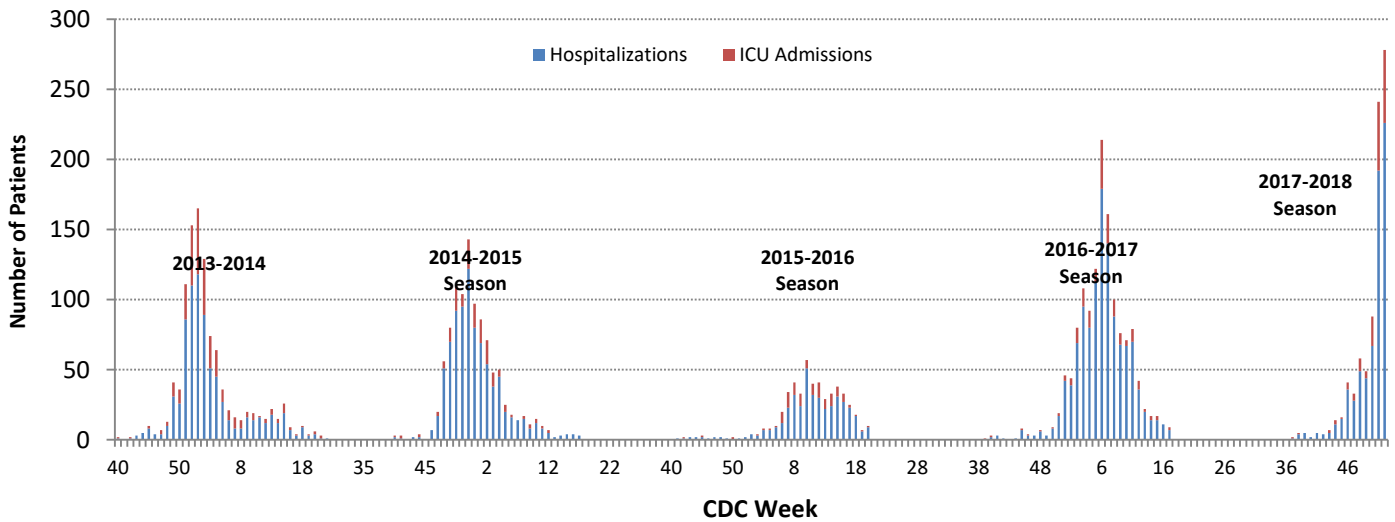
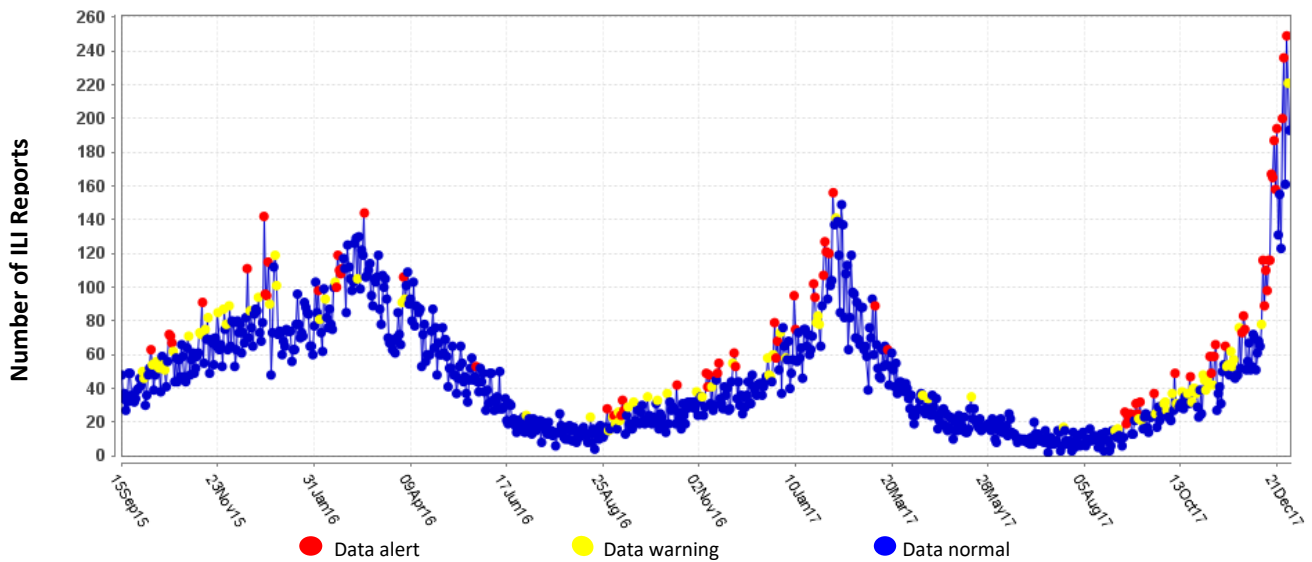


Figure 5. Syndromic Surveillance of Emergency Department Visits for Influenza-like Illness (ILI), Dallas County: September 1, 2015 – December 30, 2017



Data source: 18 emergency departments in Dallas County hospitals participating in the Electronic Surveillance System for the Early Notification of Community-based Epidemics (ESSENCE) voluntarily reporting the numbers of persons presenting with self-reported chief complaints of ILI.

Figure 6. Percentage of Student Absences by Week, Dallas County: 2016-2017 and 2017-2018

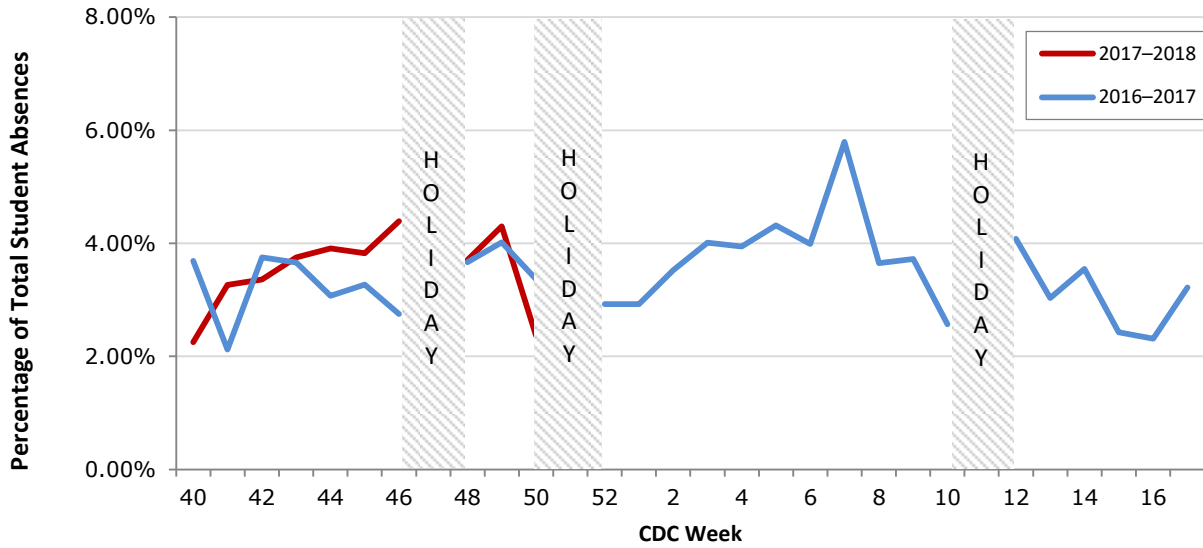
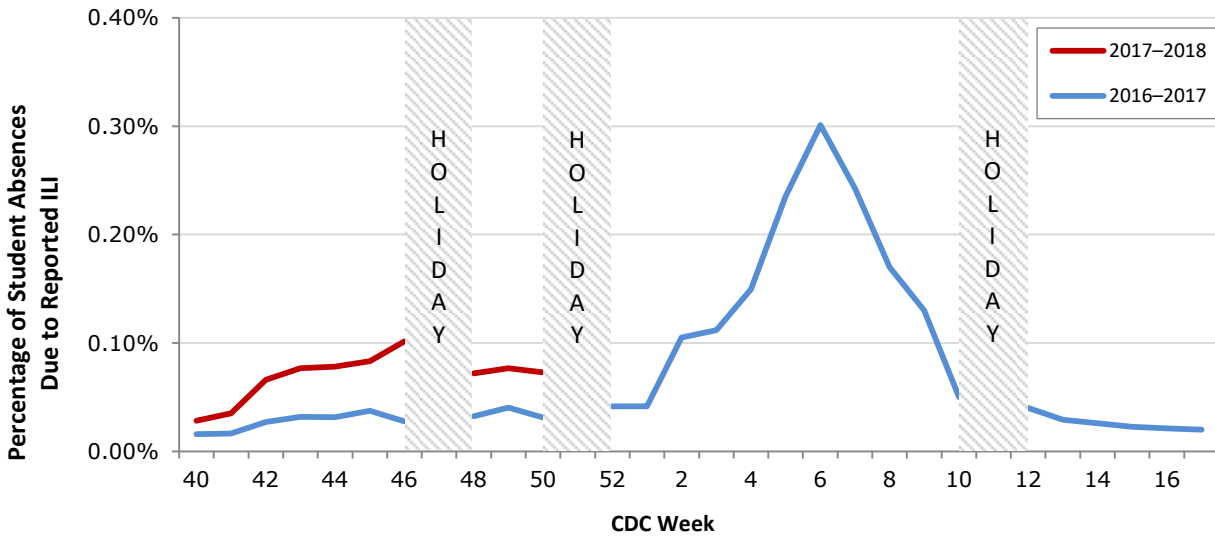


Figure 7. Percentage of Student Absences Due to ILI by Week, Dallas County: 2016-2017 and 2017-2018



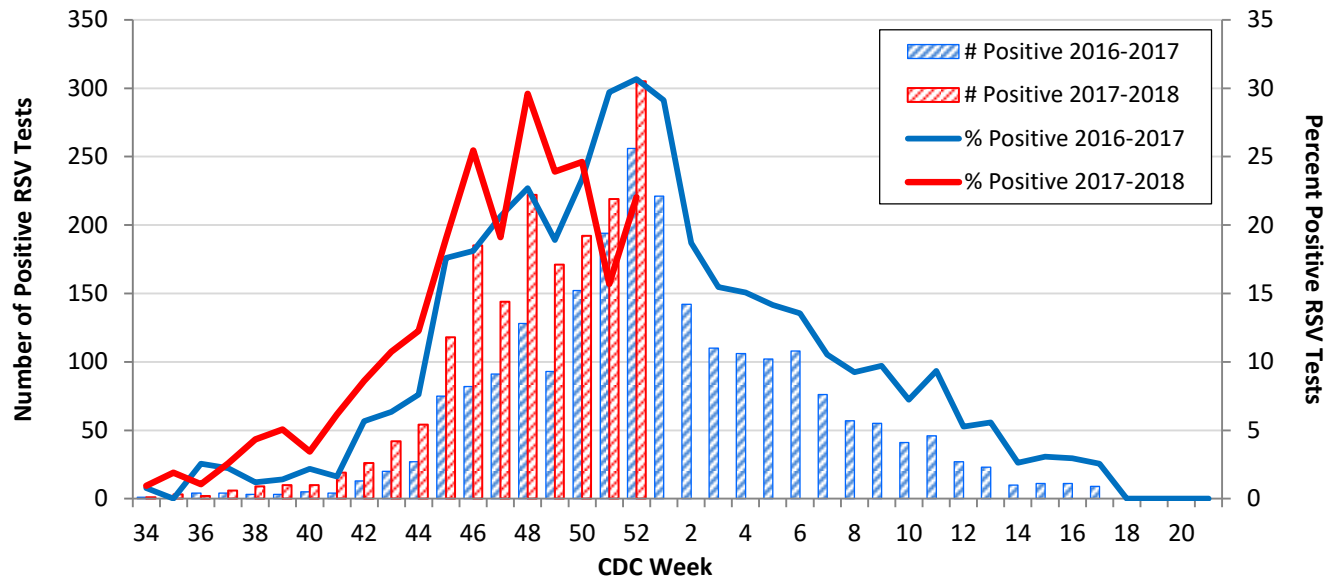
Data source: Voluntary reporting from Independent School Districts representing over 510 elementary, middle, and secondary schools and over 420,000 students in Dallas County

Table 5. Non-Influenza Respiratory Virus Testing by North Texas Laboratories Reported to NREVSS, Week 52

Virus	Number of Laboratories Reporting	Tests Performed	Total Positive Tests	Percentage of Tests Positive
Adenovirus (respiratory)	4	318	1	0.3%
HMPV	4	304	4	1.3%
Parainfluenza virus	4	318	6	1.9%
Rhinovirus/Enterovirus	4	304	33	10.9%
RSV	4	1,384	305	22.0%

Data source: National Respiratory and Enteric Virus Surveillance System (NREVSS) and hospitals reporting directly to DCHHS

Figure 8. Number and Percent Positive RSV Rapid Antigen and PCR Tests by Week, NREVSS Surveillance Data, North Texas: August 27, 2016 – December 30, 2017



Data source: National Respiratory and Enteric Virus Surveillance System (NREVSS) and hospitals reporting directly to DCHHS

Table 6. Number and Percent Positive RSV Rapid Antigen and PCR Tests by Week, NREVSS Surveillance Data, North Texas: August 26, 2017 – December 30, 2017

Week Ending	11/18	11/25	12/02	12/09	12/16	12/23	12/30	8/26/17– Present
CDC Week	46	47	48	49	50	51	52*	
RSV tests performed weekly	733	753	750	715	780	1,394	1,384	9,950
Total positive RSV tests	185	144	222	171	192	209	305	1,738
Percent positive RSV tests	25.2	19.1	29.6	23.9	24.6	15.7	22.0	

*Indicates preliminary results which are subject to change as adjustments are made for late-arriving data

Data source: National Respiratory and Enteric Virus Surveillance System (NREVSS)

Please report any of the following patients to DCHHS within 1 working day:

- **Hospitalized patients with influenza** (any subtype). Confirmation can be by any laboratory test, rapid antigen, culture, PCR, DFA/IFA, or performed in an outpatient or inpatient laboratory.
- **Deaths of persons with confirmed influenza** (any subtype). We are requesting all pediatric influenza-associated deaths to be reported *immediately* to facilitate specimen procurement and testing.
- Suspected influenza infections involving institutional outbreaks or a resident of any **Long Term Care facility** (please report *immediately*).

Phone: (214) 819-2004

Email: influenza@dallascounty.org