



Dallas County Health and Human Services 2023–2024 Influenza Surveillance Report

Week 3 ending January 20, 2024

Epidemiologic Summary

- 20.8% of Influenza tests returned positive during week 3 within Dallas County.
- Seventy-three Influenza-associated hospitalizations were reported during week 3 within Dallas County.
- Zero influenza-associated pediatric deaths have been reported during the 2023-2024 season in Dallas County.
- The overall school absenteeism rate was 5.4% of which 0.1% was attributed to influenza-like illness during week 3 of the schools reporting within Dallas County.
- 5.3% of RSV tests returned positive during week 3 in North Texas.

Table 1. Summary of Influenza Surveillance from Dallas County Hospitals and Hospital Laboratories

Week Ending	12/9	12/16	12/23	12/30	1/6	1/13	1/20	9/3/23– Present
CDC Week	49	50	51	52*	1*	2*	3*	
Total Influenza PCR Tests	1,819	2,488	1,972	2,810	3,335	2,598	1,733	37,192
Number of positive PCR tests	143	273	315	539	706	409	313	2,961
Percent of positive PCR tests	7.9	11.0	16.0	19.2	21.2	15.7	18.1	
Total Rapid Influenza Diagnostic Tests	1,603	1,099	48	702	1,410	1,171	1,180	17,185
Number of positive RIDTs	187	183	4	148	304	252	294	2,063
Percent of positive RIDTs	11.7	16.7	8.3	21.1	21.6	21.5	24.9	
Total Influenza Tests Performed	3,422	3,587	2,020	3,512	4,745	3,769	2,913	54,377
Total positive influenza tests ¹	330	456	319	687	1,010	661	607	5,024
Percent positive influenza tests	9.6	12.7	15.8	19.6	21.3	17.5	20.8	
Positive influenza A tests ²	207	317	251	486	748	423	371	3,200
Positive influenza B tests	123	139	68	201	262	238	236	1,824

¹ Includes positive rapid antigen, PCR, DFA, or culture results

² Further subtyping is performed only by select hospital laboratories for specimens referred to DCHHS by institutions for PCR-testing

³ Non-differentiated refers to rapid test results which did not differentiate between influenza A and B

Table 2. Summary of Influenza Hospitalizations and Deaths from Dallas County Hospitals, Vital Statistics and Medical Examiner’s Office

Week Ending	12/9	12/16	12/23	12/30	1/6	1/13	1/20	9/3/23– Present
CDC Week	49	50	51	52*	1*	2*	3*	
Influenza hospitalizations ⁴	39	65	172	97	153	88	73	793
Influenza ICU admissions ⁴	9	12	18	18	29	12	16	133
Confirmed pediatric deaths ⁵	0	0	0	0	0	0	0	0

⁴ Reflects all influenza-associated hospitalizations reported from 10 hospitals located within Dallas County by week of any positive influenza tests.

⁵ Confirmed influenza-associated deaths of Dallas County residents <18 years of age

Table 3. Confirmed Influenza-associated Pediatric and Adult Deaths, Dallas County: 2017–2024 Seasons

	2017–2018	2018–2019	2019–2020	2021–2022	2022–2023	2023–2024
Pediatric	4	1	3	0	1	0
Adult	79	21	22	2	..**	..**

Data source(s): Reports of confirmed influenza-associated deaths, as defined in Table 2.

**The Data is not accurately available. Adult death is not reportable condition and not all adult death are reported to DCHHS.

*Indicates preliminary results which are subject to change with late-arriving data from surveillance sites designated for DCHHS’ seasonal influenza program

Figure 1. Influenza Positive Tests Reported to DCHHS by Hospital Laboratories: 2023–2024 Season

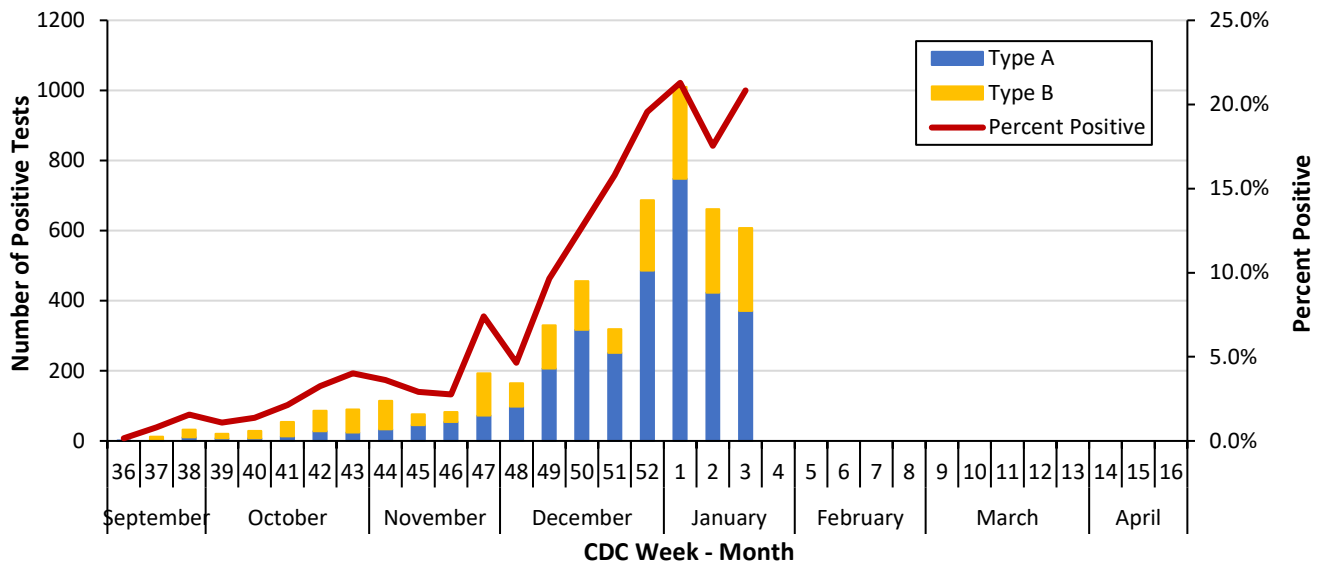


Figure 2. Influenza Positive Tests Reported to DCHHS by Hospital Laboratories: 2018–2019 and 2022-2024 Seasons

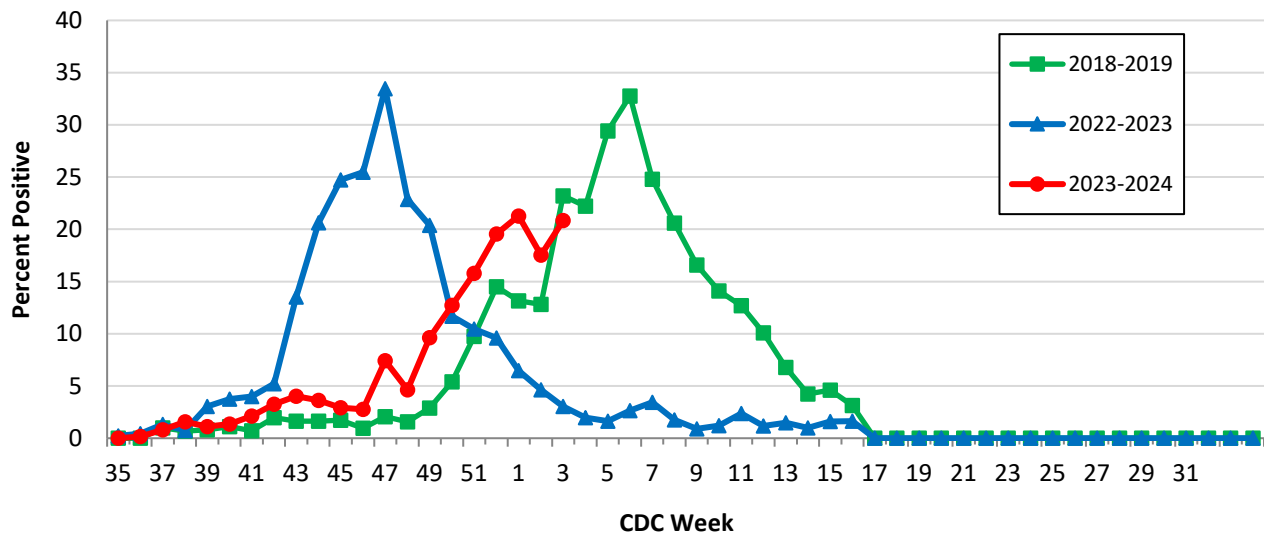
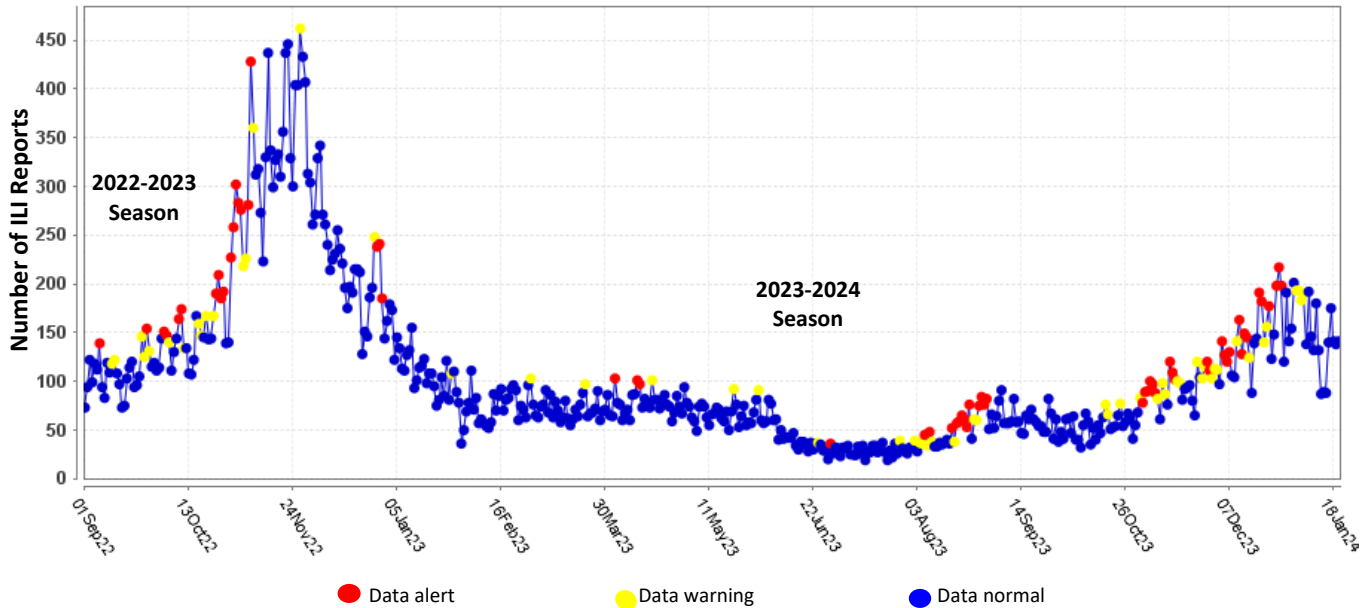


Table 4. Influenza Typing and Subtyping from Cumulative Dallas County, Texas, and U.S. Laboratory Surveillance Data: 2023–2024 Season

	Dallas ¹ (n=80)	Texas ² (n=1,012)	U.S. ³ (n=58,291)
Influenza A	21 (77.8%)	246 (61.8%)	14,442 (82.6%)
H1N1 2009 subtype	18 (85.7%)	212 (89.1%)	9,314 (80.1%)
H3N2 subtype	3 (14.3%)	26 (10.9%)	2,309 (19.9%)
Not subtyped	0	8	2,819
Influenza B	6 (22.2%)	152 (38.2%)	3,039 (17.4%)
Yamagata strain	0 (0.0%)	0 (0.0%)	0 (0.0%)

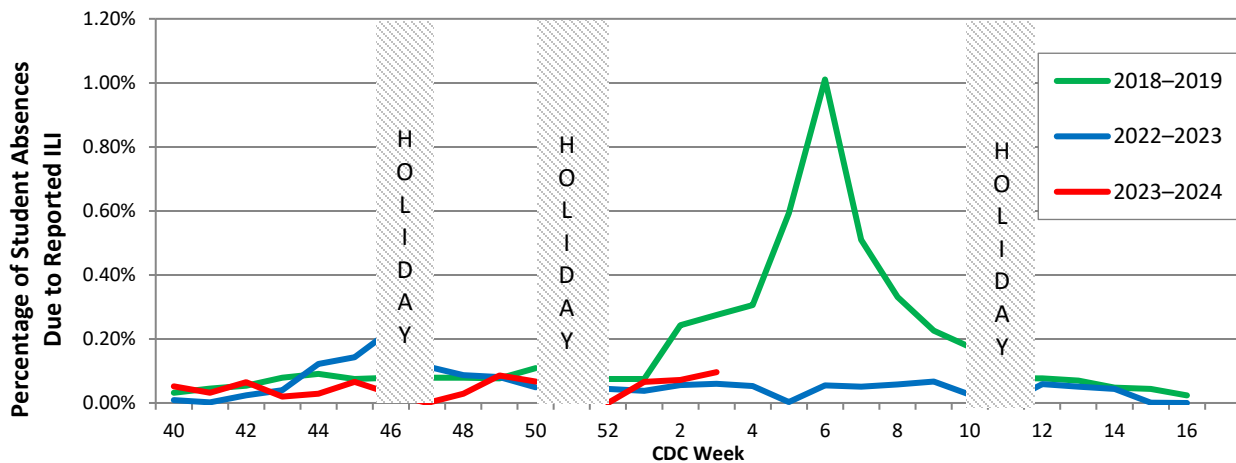
¹ DCHHS LRN laboratory PCR testing of designated Dallas County surveillance site isolates; counts may not sum to total as samples can test positive for multiple subtypes
² DSHS 2023–2024 Texas Influenza Surveillance Information Activity Report available at <https://www.dshs.texas.gov/texas-respiratory-virus-surveillance-report>
³ CDC FluView Weekly Influenza Surveillance Report available at <http://www.cdc.gov/flu/weekly/> *Only a subset of influenza B had lineage testing performed.

Figure 3. Syndromic Surveillance of Emergency Department Visits for Influenza-like Illness (ILI), Dallas County: September 1, 2022 – January 20, 2024



Data source: 18 emergency departments in Dallas County hospitals participating in the Electronic Surveillance System for the Early Notification of Community-based Epidemics (ESSENCE) voluntarily reporting the numbers of persons presenting with self-reported chief complaints of ILI.

Figure 4. Percentage of Student Absences Due to ILI by Week, Dallas County: 2018–2019 and 2022–2024 Seasons



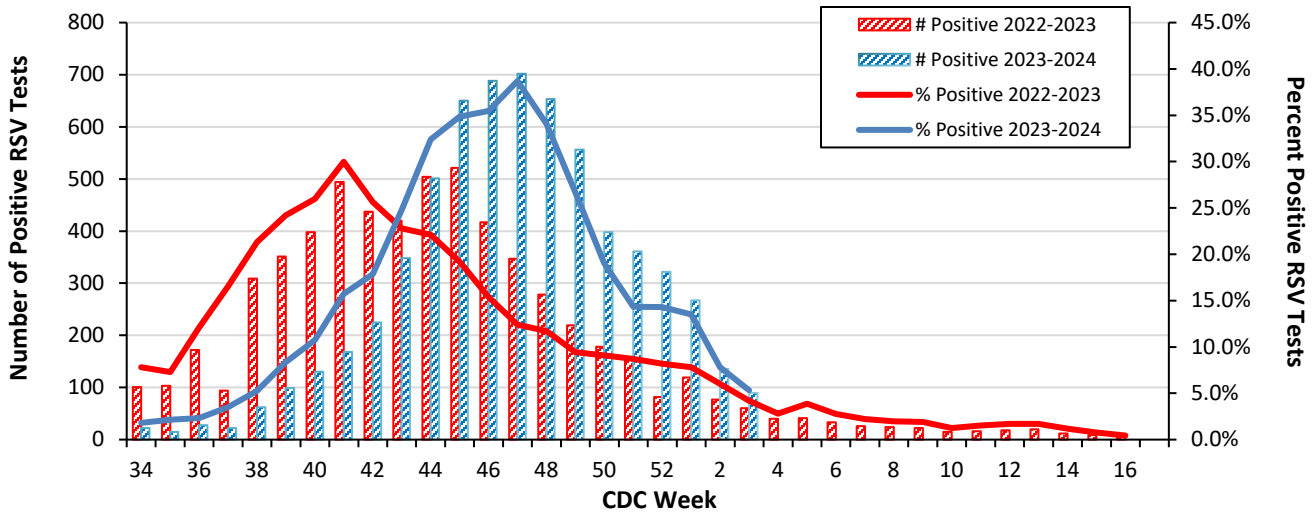
Data source: Voluntary reporting from Independent School Districts, private, and charter School representing over 600 elementary, middle, and secondary schools and over 344,000 students in Dallas County

Table 5. Non-Influenza Respiratory Virus Testing by North Texas Laboratories Reported to NREVSS, Week 3.

Virus	Number of Laboratories Reporting*	Tests Performed	Total Positive Tests	Percentage of Tests Positive
Adenovirus (respiratory)	2	682	50	7.3
HMPV	2	682	33	4.8
Parainfluenza virus	2	682	28	4.1
Rhinovirus/Enterovirus	2	682	101	14.8
RSV	2	1,691	90	5.3
COVID-19	2	1,785	119	6.7

Data source: National Respiratory and Enteric Virus Surveillance System (NREVSS) and hospitals reporting directly to DCHHS

Figure 5. Number and Percent Positive RSV Rapid Antigen and PCR Tests by Week, NREVSS Surveillance Data, North Texas: 2022-2023 and 2023-2024 Seasons



Data source: National Respiratory and Enteric Virus Surveillance System (NREVSS) and hospitals reporting directly to DCHHS

Table 6. Number and Percent Positive RSV Rapid Antigen and PCR Tests by Week, NREVSS Surveillance Data, North Texas: September 3, 2023 – January 20, 2024

Week Ending	12/9	12/16	12/23	12/30	1/6	1/13	1/20	9/3/23–Present
CDC Week	49	50	51	52*	1*	2*	3*	
RSV tests performed weekly	2,084	2,093	2,520	2,251	1,977	1,745	1,691	32,589
Total positive RSV tests	556	398	361	322	267	136	90	6,406
Percent positive RSV tests	26.7	19.0	14.3	14.3	13.5	7.8	5.3	

*Indicates preliminary results which are subject to change as adjustments are made for late-arriving data

Data source: National Respiratory and Enteric Virus Surveillance System (NREVSS)

Please report any of the following patients to DCHHS within 1 working day:

- **Hospitalized patients with influenza** (any subtype). Confirmation can be by any laboratory test, rapid antigen, culture, PCR, DFA/IFA, or performed in an outpatient or inpatient laboratory.
- **Deaths of persons with confirmed influenza** (any subtype). We are requesting all pediatric influenza-associated deaths to be reported *immediately* to facilitate specimen procurement and testing.
- Suspected influenza infections involving institutional outbreaks or a resident of any **Long-Term Care facility** (please report *immediately*).

Phone: **(214) 819-2004**

Email: **influenza.influenza@dallascounty.org**