



# Dallas County Health and Human Services 2023–2024 Influenza Surveillance Report

Week 5 ending February 3, 2024

## Epidemiologic Summary

- 25.3% of Influenza tests returned positive during week 5 within Dallas County.
- One hundred and forty-four Influenza-associated hospitalizations were reported during week 5 within Dallas County.
- Zero influenza-associated pediatric deaths have been reported during the 2023-2024 season in Dallas County.
- The overall school absenteeism rate was 8.8% of which 0.12% was attributed to influenza-like illness during week 5 of the schools reporting within Dallas County.
- 2.8% of RSV tests returned positive during week 5 in North Texas.

**Table 1.** Summary of Influenza Surveillance from Dallas County Hospitals and Hospital Laboratories

Week Ending	12/23	12/30	1/6	1/13	1/20	1/27	2/3	9/3/23– Present
CDC Week	51	52	1	2*	3*	4*	5*	
<b>Total Influenza PCR Tests</b>	1,972	2,810	3,335	2,598	1,733	2,798	3,583	43,573
Number of positive PCR tests	315	539	706	409	313	699	834	4,494
Percent of positive PCR tests	16.0	19.2	21.2	15.7	18.1	25.0	23.3	
<b>Total Rapid Influenza Diagnostic Tests</b>	48	702	1,410	1,171	1,180	629	872	18,686
Number of positive RIDTs	4	148	304	252	294	216	293	2,572
Percent of positive RIDTs	8.3	21.1	21.6	21.5	24.9	34.3	33.6	
<b>Total Influenza Tests Performed</b>	2,020	3,512	4,745	3,769	2,913	3,427	4,455	62,259
Total positive influenza tests <sup>1</sup>	319	687	1,010	661	607	915	1,127	7,066
Percent positive influenza tests	15.8	19.6	21.3	17.5	20.8	26.7	25.3	
Positive influenza A tests <sup>2</sup>	251	486	748	423	371	579	688	4,467
Positive influenza B tests	68	201	262	238	236	336	439	2,599

1 Includes positive rapid antigen, PCR, DFA, or culture results

2 Further subtyping is performed only by select hospital laboratories for specimens referred to DCHHS by institutions for PCR-testing

3 Non-differentiated refers to rapid test results which did not differentiate between influenza A and B

**Table 2.** Summary of Influenza Hospitalizations and Deaths from Dallas County Hospitals, Vital Statistics and Medical Examiner’s Office

Week Ending	12/23	12/30	1/6	1/13	1/20	1/27	2/3	9/3/23– Present
CDC Week	51	52	1	2*	3*	4*	5*	
Influenza hospitalizations <sup>4</sup>	172	97	153	88	73	97	144	1,034
Influenza ICU admissions <sup>4</sup>	18	18	29	12	16	21	19	173
Confirmed pediatric deaths <sup>5</sup>	0	0	0	0	0	0	0	0

<sup>4</sup> Reflects all influenza-associated hospitalizations reported from 10 hospitals located within Dallas County by week of any positive influenza tests.

<sup>5</sup> Confirmed influenza-associated deaths of Dallas County residents <18 years of age

**Table 3.** Confirmed Influenza-associated Pediatric and Adult Deaths, Dallas County: 2017–2024 Seasons

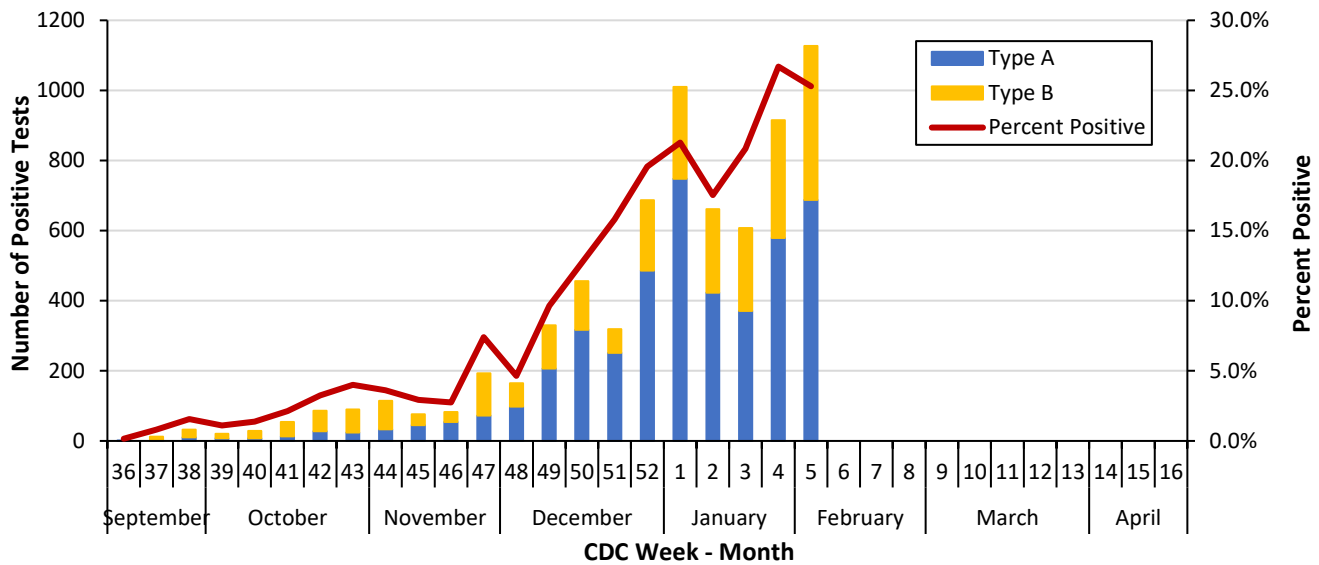
	2017–2018	2018–2019	2019–2020	2021–2022	2022–2023	2023–2024
Pediatric	4	1	3	0	1	0
Adult	79	21	22	2	–**	–**

Data source(s): Reports of confirmed influenza-associated deaths, as defined in Table 2.

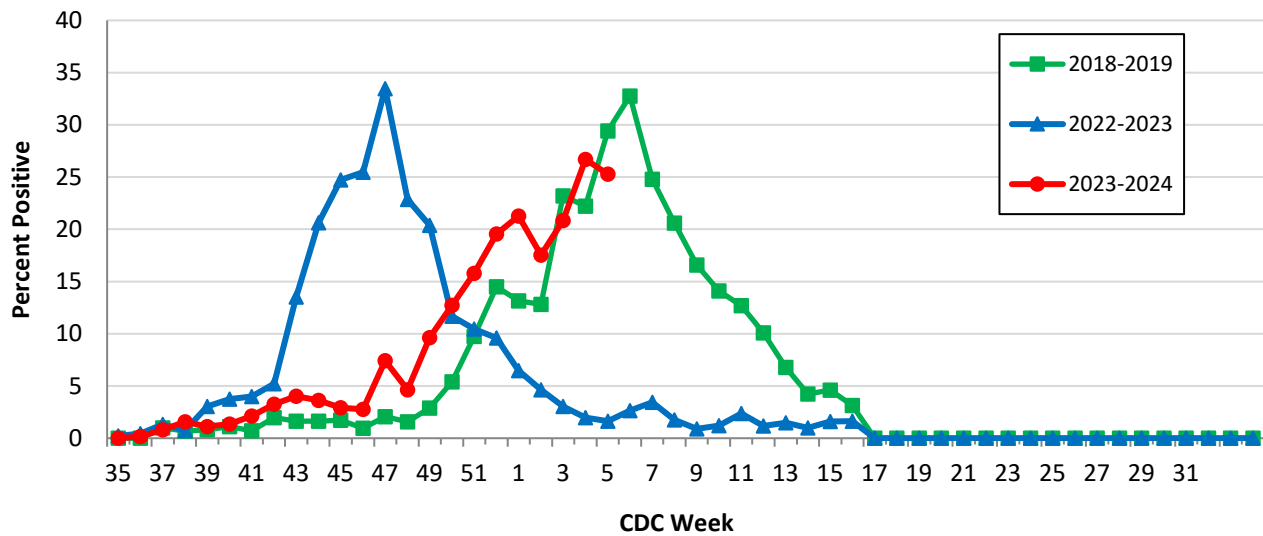
\*\*The Data is not accurately available. Adult death is not reportable condition and not all adult death are reported to DCHHS.

\*Indicates preliminary results which are subject to change with late-arriving data from surveillance sites designated for DCHHS’ seasonal influenza program

**Figure 1.** Influenza Positive Tests Reported to DCHHS by Hospital Laboratories: 2023–2024 Season



**Figure 2.** Influenza Positive Tests Reported to DCHHS by Hospital Laboratories: 2018–2019 and 2022-2024 Seasons

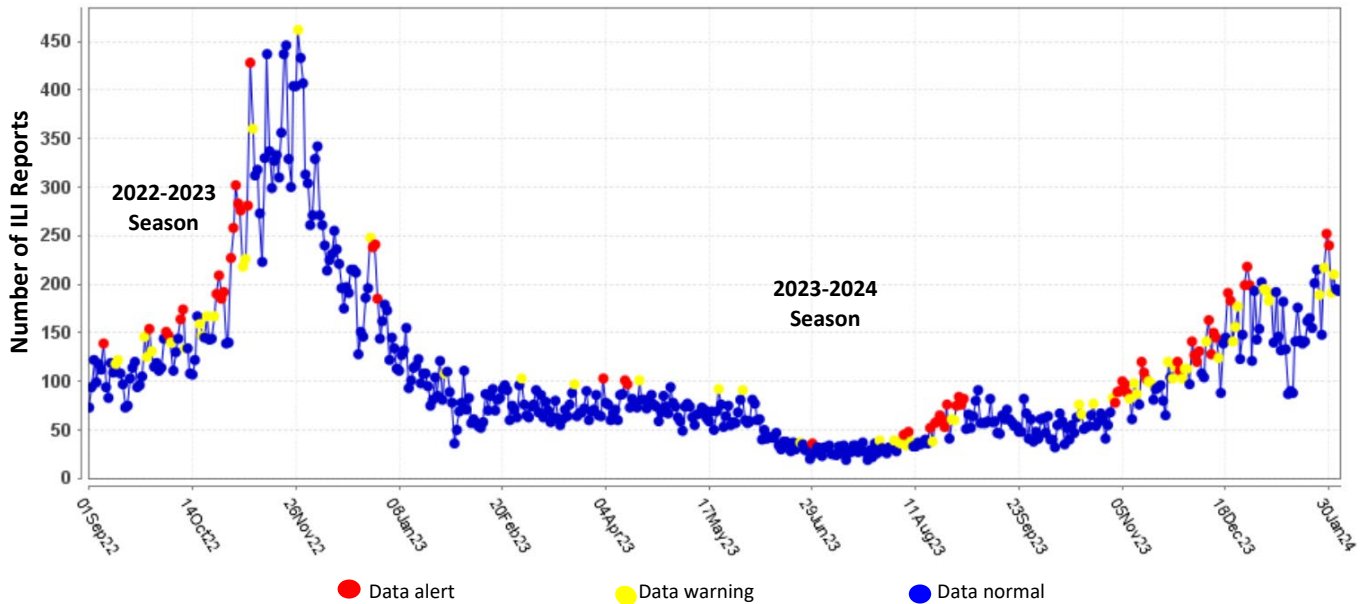


**Table 4.** Influenza Typing and Subtyping from Cumulative Dallas County, Texas, and U.S. Laboratory Surveillance Data: 2023–2024 Season

	Dallas <sup>1</sup> (n=81)	Texas <sup>2</sup> (n=1,268)	U.S. <sup>3</sup> (n=68,366)
Influenza A	21 (77.8%)	311 (60.6%)	17,303 (82.4%)
H1N1 2009 subtype	18 (85.7%)	249 (85.3%)	10,972 (78.6%)
H3N2 subtype	3 (14.3%)	43 (14.7%)	2,983 (21.4%)
Not subtyped	0	19	3,348
Influenza B	6 (22.2%)	202 (39.4%)	3,701 (17.6%)
Yamagata strain	0 (0.0%)	0 (0.0%)	0 (0.0%)

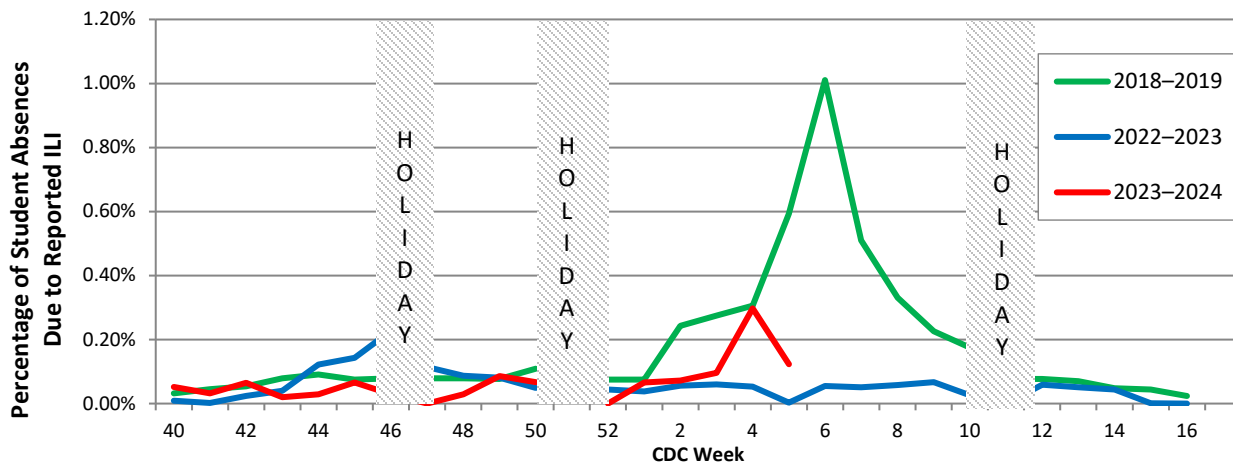
<sup>1</sup> DCHHS LRN laboratory PCR testing of designated Dallas County surveillance site isolates; counts may not sum to total as samples can test positive for multiple subtypes  
<sup>2</sup> DSHS 2023–2024 Texas Influenza Surveillance Information Activity Report available at <https://www.dshs.texas.gov/texas-respiratory-virus-surveillance-report>  
<sup>3</sup> CDC FluView Weekly Influenza Surveillance Report available at <http://www.cdc.gov/flu/weekly/> \*Only a subset of influenza B had lineage testing performed.

**Figure 3.** Syndromic Surveillance of Emergency Department Visits for Influenza-like Illness (ILI), Dallas County: September 1, 2022 – February 3, 2024



Data source: 18 emergency departments in Dallas County hospitals participating in the Electronic Surveillance System for the Early Notification of Community-based Epidemics (ESSENCE) voluntarily reporting the numbers of persons presenting with self-reported chief complaints of ILI.

**Figure 4.** Percentage of Student Absences Due to ILI by Week, Dallas County: 2018–2019 and 2022–2024 Seasons



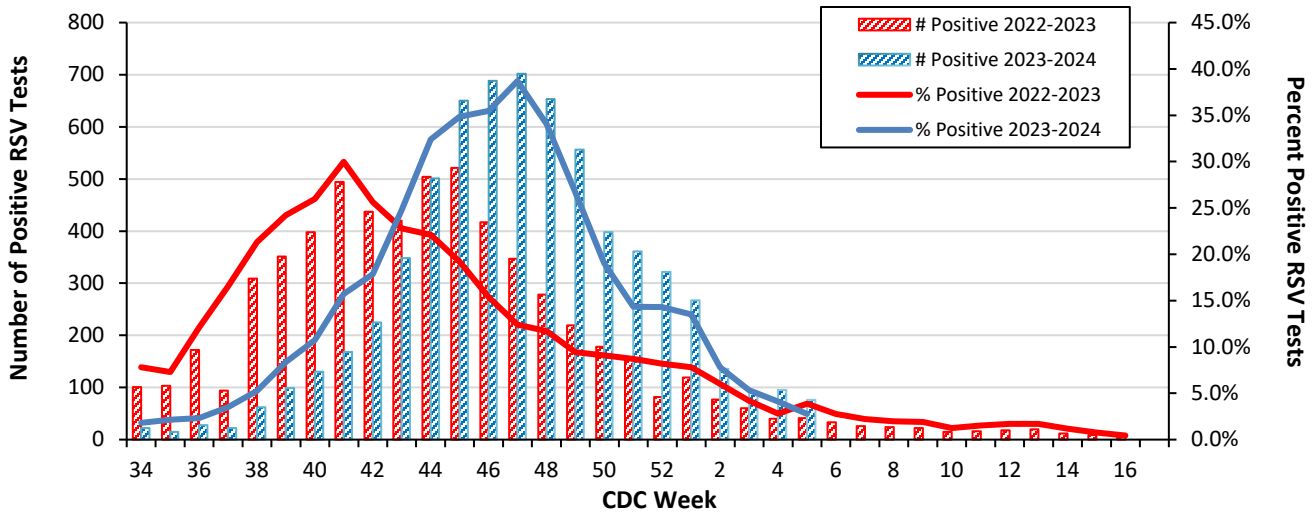
Data source: Voluntary reporting from Independent School Districts, private, and charter School representing over 600 elementary, middle, and secondary schools and over 344,000 students in Dallas County

**Table 5.** Non-Influenza Respiratory Virus Testing by North Texas Laboratories Reported to NREVSS, Week 5.

Virus	Number of Laboratories Reporting*	Tests Performed	Total Positive Tests	Percentage of Tests Positive
Adenovirus (respiratory)	2	933	40	4.3
HMPV	2	933	31	3.3
Parainfluenza virus	2	933	35	3.8
Rhinovirus/Enterovirus	2	933	220	23.6
RSV	2	2,745	76	2.8
COVID-19	2	3,075	201	6.5

Data source: National Respiratory and Enteric Virus Surveillance System (NREVSS) and hospitals reporting directly to DCHHS

**Figure 5.** Number and Percent Positive RSV Rapid Antigen and PCR Tests by Week, NREVSS Surveillance Data, North Texas: 2022-2023 and 2023-2024 Seasons



Data source: National Respiratory and Enteric Virus Surveillance System (NREVSS) and hospitals reporting directly to DCHHS

**Table 6.** Number and Percent Positive RSV Rapid Antigen and PCR Tests by Week, NREVSS Surveillance Data, North Texas: September 3, 2023 – February 3, 2024

Week Ending	12/23	12/30	1/6	1/13	1/20	1/27	2/3	9/3/23–Present
CDC Week	51	52	1	2*	3*	4*	5*	
RSV tests performed weekly	2,520	2,251	1,977	1,745	1,691	2,310	2,745	37,644
Total positive RSV tests	361	322	267	136	90	95	76	6,577
Percent positive RSV tests	14.3	14.3	13.5	7.8	5.3	4.1	2.8	

\*Indicates preliminary results which are subject to change as adjustments are made for late-arriving data

Data source: National Respiratory and Enteric Virus Surveillance System (NREVSS)

**Please report any of the following patients to DCHHS within 1 working day:**

- **Hospitalized patients with influenza** (any subtype). Confirmation can be by any laboratory test, rapid antigen, culture, PCR, DFA/IFA, or performed in an outpatient or inpatient laboratory.
- **Deaths of persons with confirmed influenza** (any subtype). We are requesting all pediatric influenza-associated deaths to be reported *immediately* to facilitate specimen procurement and testing.
- Suspected influenza infections involving institutional outbreaks or a resident of any **Long-Term Care facility** (please report *immediately*).

Phone: (214) 819-2004

Email: [influenza.influenza@dallascounty.org](mailto:influenza.influenza@dallascounty.org)