



# Dallas County Health and Human Services 2023–2024 Influenza Surveillance Report

Week 11 ending March 16, 2024

## Epidemiologic Summary

- 6.5% of Influenza tests returned positive during week 11 within Dallas County.
- Eight Influenza-associated hospitalizations were reported during week 11 within Dallas County.
- Zero influenza-associated pediatric deaths have been reported during the 2023-2024 season in Dallas County.
- School absenteeism data is unavailable this week due to the holiday.
- 1.6% of RSV tests returned positive during week 11 in North Texas.

**Table 1.** Summary of Influenza Surveillance from Dallas County Hospitals and Hospital Laboratories

Week Ending	2/3	2/10	2/17	2/24	3/2	3/9	3/16	9/3/23– Present
CDC Week	5	6	7	8*	9*	10*	11*	
<b>Total Influenza PCR Tests</b>	3,583	3,132	2,850	2,380	2,547	2,286	1,468	<b>58,236</b>
Number of positive PCR tests	834	565	311	197	228	194	85	<b>6,074</b>
Percent of positive PCR tests	23.3	18.0	10.9	8.3	9.0	8.5	5.8	
<b>Total Rapid Influenza Diagnostic Tests</b>	872	833	705	504	330	141	260	<b>21,459</b>
Number of positive RIDTs	293	258	341	224	137	18	28	<b>3,578</b>
Percent of positive RIDTs	33.6	31.0	48.4	44.4	41.5	12.8	10.8	
<b>Total Influenza Tests Performed</b>	4,455	3,965	3,555	2,884	2,877	2,427	1,728	<b>79,695</b>
Total positive influenza tests <sup>1</sup>	1,127	823	652	421	365	212	113	<b>9,652</b>
Percent positive influenza tests	25.3	20.8	18.3	14.6	12.7	8.7	6.5	
Positive influenza A tests <sup>2</sup>	688	405	305	209	135	114	52	<b>5,687</b>
Positive influenza B tests	439	418	347	212	230	98	61	<b>3,965</b>

1 Includes positive rapid antigen, PCR, DFA, or culture results

2 Further subtyping is performed only by select hospital laboratories for specimens referred to DCHHS by institutions for PCR-testing

3 Non-differentiated refers to rapid test results which did not differentiate between influenza A and B

**Table 2.** Summary of Influenza Hospitalizations and Deaths from Dallas County Hospitals, Vital Statistics and Medical Examiner’s Office

Week Ending	2/3	2/10	2/17	2/24	3/2	3/9	3/16	9/3/23– Present
CDC Week	5	6	7	8*	9*	10*	11*	
Influenza hospitalizations <sup>4</sup>	<b>144</b>	<b>95</b>	<b>60</b>	<b>71</b>	<b>54</b>	<b>25</b>	<b>8</b>	<b>1,347</b>
Influenza ICU admissions <sup>4</sup>	<b>19</b>	<b>12</b>	<b>7</b>	<b>12</b>	<b>8</b>	<b>3</b>	<b>1</b>	<b>216</b>
Confirmed pediatric deaths <sup>5</sup>	0	0	0	0	0	0	0	<b>0</b>

<sup>4</sup> Reflects all influenza-associated hospitalizations reported from 10 hospitals located within Dallas County by week of any positive influenza tests.

<sup>5</sup> Confirmed influenza-associated deaths of Dallas County residents <18 years of age

**Table 3.** Confirmed Influenza-associated Pediatric and Adult Deaths, Dallas County: 2017–2024 Seasons

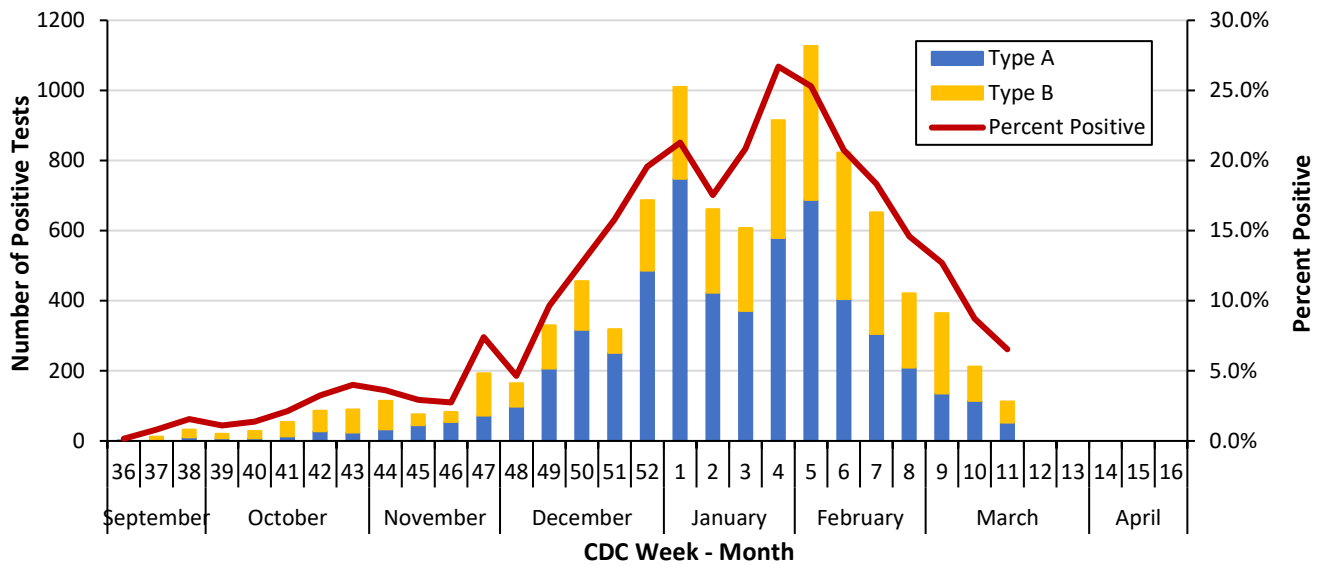
	2017–2018	2018–2019	2019–2020	2021–2022	2022–2023	2023–2024
Pediatric	4	1	3	0	1	0
Adult	79	21	22	2	..**	..**

Data source(s): Reports of confirmed influenza-associated deaths, as defined in Table 2.

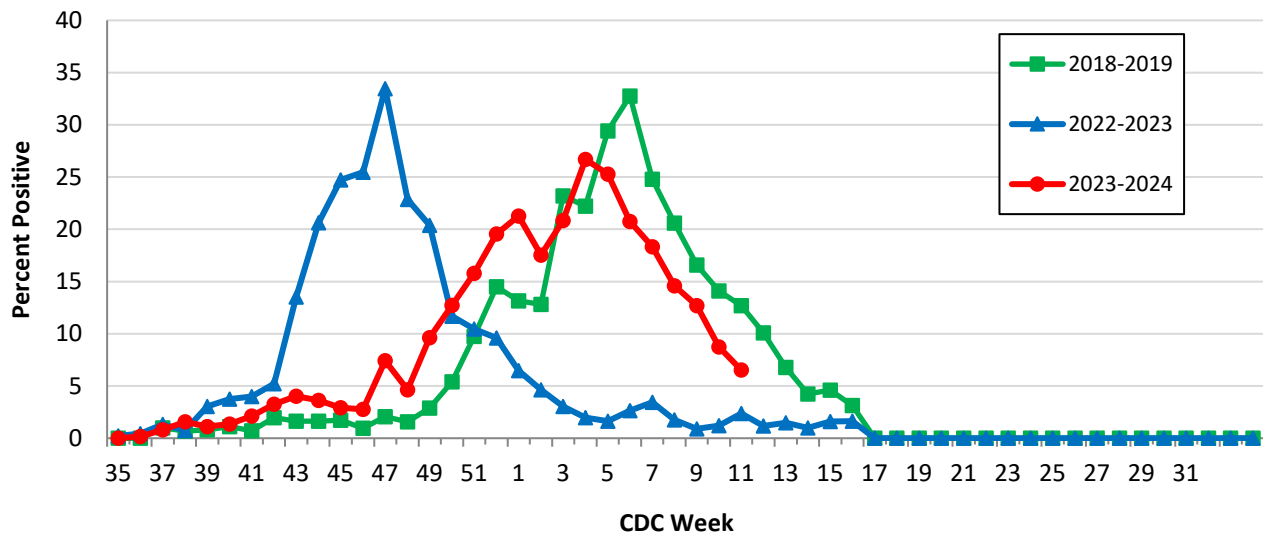
\*\*The Data is not accurately available. Adult death is not reportable condition and not all adult death are reported to DCHHS.

\*Indicates preliminary results which are subject to change with late-arriving data from surveillance sites designated for DCHHS’ seasonal influenza program

**Figure 1.** Influenza Positive Tests Reported to DCHHS by Hospital Laboratories: 2023–2024 Season



**Figure 2.** Influenza Positive Tests Reported to DCHHS by Hospital Laboratories: 2018–2019 and 2022-2024 Seasons



**Table 4.** Influenza Typing and Subtyping from Cumulative Dallas County, Texas, and U.S. Laboratory Surveillance Data: 2023–2024 Season

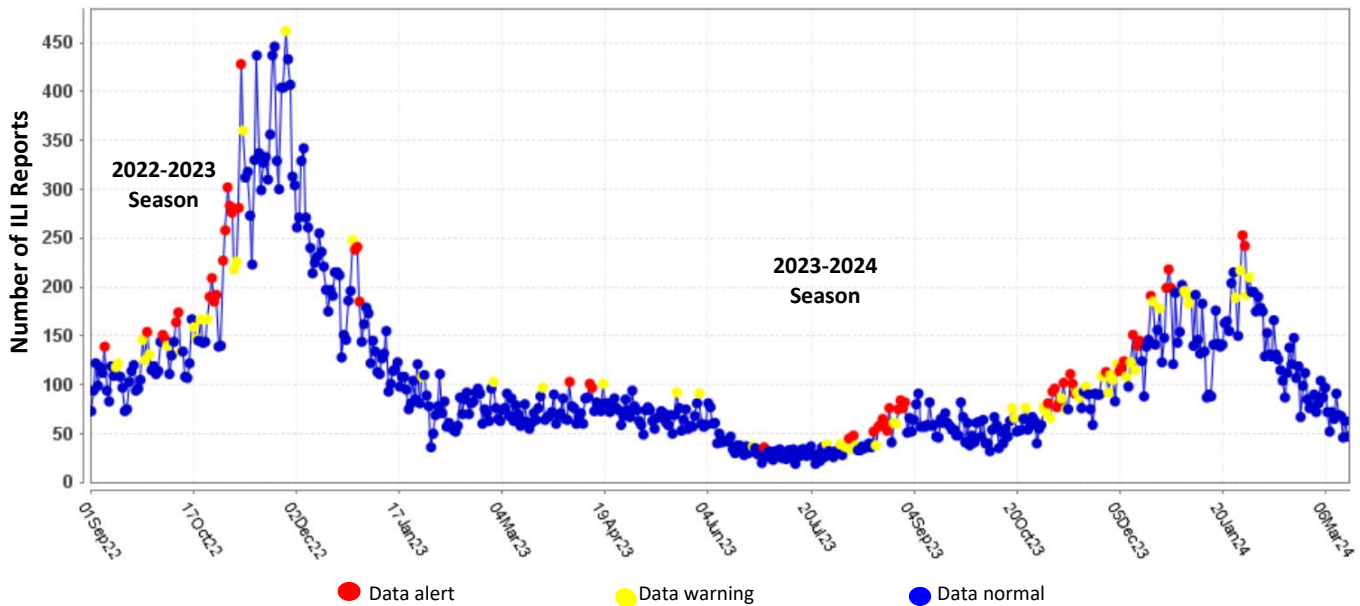
	Dallas <sup>1</sup> (n=101)	Texas <sup>2</sup> (n=1,913)	U.S. <sup>3</sup> (n=90,420)
Influenza A	24 (75.0%)	432 (58.6%)	23,120 (79.1%)
H1N1 2009 subtype	19 (79.2%)	289 (70.8%)	13,853 (72.9%)
H3N2 subtype	5 (20.8%)	119 (29.2%)	5,157 (27.1%)
Not subtyped	0	24	4,110
Influenza B	8 (25.0%)	305 (41.4%)	6,119 (20.9%)
Yamagata strain	0 (0.0%)	0 (0.0%)	0 (0.0%)

<sup>1</sup> DCHHS LRN laboratory PCR testing of designated Dallas County surveillance site isolates; counts may not sum to total as samples can test positive for multiple subtypes

<sup>2</sup> DSHS 2023–2024 Texas Influenza Surveillance Information Activity Report available at <https://www.dshs.texas.gov/texas-respiratory-virus-surveillance-report>

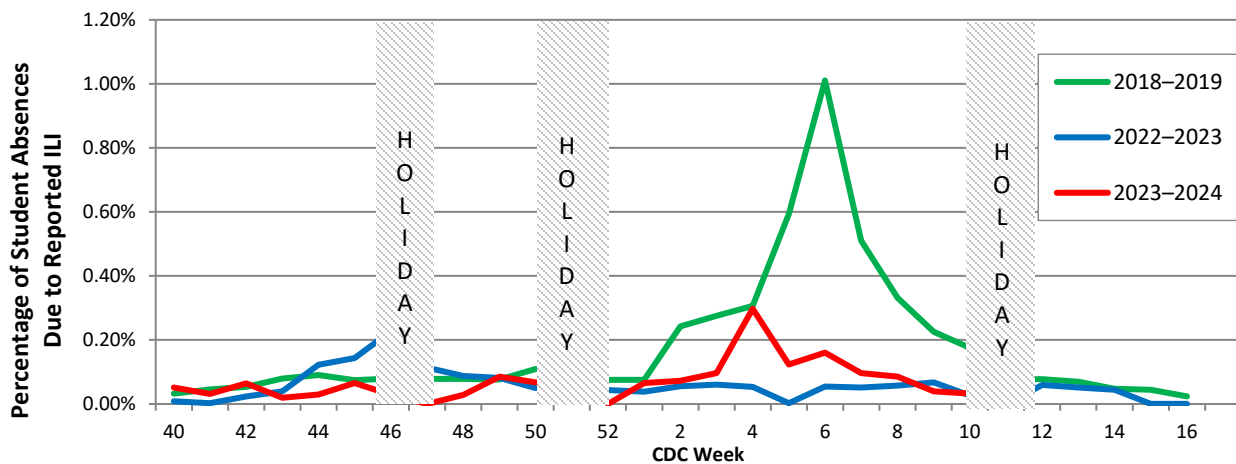
<sup>3</sup> CDC FluView Weekly Influenza Surveillance Report available at <http://www.cdc.gov/flu/weekly/> \*Only a subset of influenza B had lineage testing performed.

**Figure 3.** Syndromic Surveillance of Emergency Department Visits for Influenza-like Illness (ILI), Dallas County: September 1, 2022 – March 16, 2024



Data source: 18 emergency departments in Dallas County hospitals participating in the Electronic Surveillance System for the Early Notification of Community-based Epidemics (ESSENCE) voluntarily reporting the numbers of persons presenting with self-reported chief complaints of ILI.

**Figure 4.** Percentage of Student Absences Due to ILI by Week, Dallas County: 2018–2019 and 2022–2024 Seasons



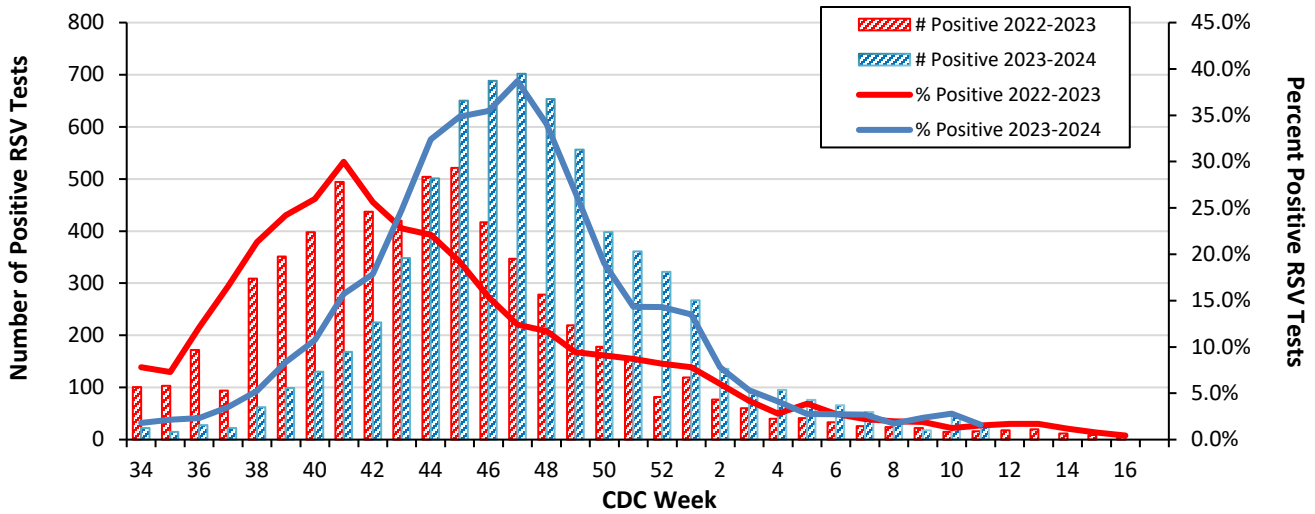
Data source: Voluntary reporting from Independent School Districts, private, and charter School representing over 600 elementary, middle, and secondary schools and over 344,000 students in Dallas County

**Table 5.** Non-Influenza Respiratory Virus Testing by North Texas Laboratories Reported to NREVSS, Week 11.

Virus	Number of Laboratories Reporting*	Tests Performed	Total Positive Tests	Percentage of Tests Positive
Adenovirus (respiratory)	2	695	40	5.8
HMPV	2	695	84	12.1
Parainfluenza virus	2	695	54	7.8
Rhinovirus/Enterovirus	2	695	259	37.3
RSV	2	1,490	24	1.6
COVID-19	2	1,488	57	3.8

Data source: National Respiratory and Enteric Virus Surveillance System (NREVSS) and hospitals reporting directly to DCHHS

**Figure 5.** Number and Percent Positive RSV Rapid Antigen and PCR Tests by Week, NREVSS Surveillance Data, North Texas: 2022-2023 and 2023-2024 Seasons



Data source: National Respiratory and Enteric Virus Surveillance System (NREVSS) and hospitals reporting directly to DCHHS

**Table 6.** Number and Percent Positive RSV Rapid Antigen and PCR Tests by Week, NREVSS Surveillance Data, North Texas: September 3, 2023 – March 16, 2024

Week Ending	2/3	2/10	2/17	2/24	3/2	3/9	3/16	9/3/23–Present
CDC Week	5	6	7	8*	9*	10*	11*	
RSV tests performed weekly	2,745	2,412	1,959	1,907	768	1,615	1,490	47,795
Total positive RSV tests	76	66	53	33	18	45	24	6,816
Percent positive RSV tests	2.8	2.7	2.7	1.7	2.3	2.8	1.6	

\*Indicates preliminary results which are subject to change as adjustments are made for late-arriving data

Data source: National Respiratory and Enteric Virus Surveillance System (NREVSS)

**Please report any of the following patients to DCHHS:**

- **Deaths of pediatric patients with confirmed influenza** (any subtype). We are requesting all pediatric influenza-associated deaths to be reported to facilitate specimen procurement and testing. (Please report *within 1 workday*).
- Suspected influenza infections involving institutional **outbreaks** (Please report *immediately*).
- Patients with **Novel influenza**. (Please report *immediately*).

Phone: **(214) 819-2004**

Email: **influenza.influenza@dallascounty.org**