



Dallas County Health and Human Services 2023–2024 Influenza Surveillance Report

Week 12 ending March 23, 2024

Epidemiologic Summary

- 6.4% of Influenza tests returned positive during week 12 within Dallas County.
- Fourteen Influenza-associated hospitalizations were reported during week 12 within Dallas County.
- Zero influenza-associated pediatric deaths have been reported during the 2023-2024 season in Dallas County.
- The overall school absenteeism rate was 5.2% of which 0.02% was attributed to influenza-like illness during week 12 of the schools reporting within Dallas County.
- 2.1% of RSV tests returned positive during week 12 in North Texas.

Table 1. Summary of Influenza Surveillance from Dallas County Hospitals and Hospital Laboratories

| Week Ending | 2/10 | 2/17 | 2/24 | 3/2 | 3/9 | 3/16 | 3/23 | 9/3/23– Present |
|---|-------|-------|-------|-------|-------|-------|-------|--------------------|
| CDC Week | 6 | 7 | 8 | 9* | 10* | 11* | 12* | |
| Total Influenza PCR Tests | 3,132 | 2,850 | 2,380 | 2,547 | 2,286 | 1,468 | 1,272 | 59,508 |
| Number of positive PCR tests | 565 | 311 | 197 | 228 | 194 | 85 | 65 | 6,139 |
| Percent of positive PCR tests | 18.0 | 10.9 | 8.3 | 9.0 | 8.5 | 5.8 | 5.1 | |
| Total Rapid Influenza Diagnostic Tests | 833 | 705 | 504 | 330 | 141 | 260 | 488 | 21,947 |
| Number of positive RIDTs | 258 | 341 | 224 | 137 | 18 | 28 | 47 | 3,625 |
| Percent of positive RIDTs | 31.0 | 48.4 | 44.4 | 41.5 | 12.8 | 10.8 | 9.6 | |
| Total Influenza Tests Performed | 3,965 | 3,555 | 2,884 | 2,877 | 2,427 | 1,728 | 1,760 | 81,455 |
| Total positive influenza tests ¹ | 823 | 652 | 421 | 365 | 212 | 113 | 112 | 9,764 |
| Percent positive influenza tests | 20.8 | 18.3 | 14.6 | 12.7 | 8.7 | 6.5 | 6.4 | |
| Positive influenza A tests ² | 405 | 305 | 209 | 135 | 114 | 52 | 55 | 5,742 |
| Positive influenza B tests | 418 | 347 | 212 | 230 | 98 | 61 | 57 | 4,022 |

¹ Includes positive rapid antigen, PCR, DFA, or culture results

² Further subtyping is performed only by select hospital laboratories for specimens referred to DCHHS by institutions for PCR-testing

³ Non-differentiated refers to rapid test results which did not differentiate between influenza A and B

Table 2. Summary of Influenza Hospitalizations and Deaths from Dallas County Hospitals, Vital Statistics and Medical Examiner’s Office

| Week Ending | 2/10 | 2/17 | 2/24 | 3/2 | 3/9 | 3/16 | 3/23 | 9/3/23– Present |
|---|------|------|------|-----|-----|------|------|--------------------|
| CDC Week | 6 | 7 | 8 | 9* | 10* | 11* | 12* | |
| Influenza hospitalizations ⁴ | 95 | 60 | 71 | 54 | 25 | 8 | 14 | 1,361 |
| Influenza ICU admissions ⁴ | 12 | 7 | 12 | 8 | 3 | 1 | 1 | 217 |
| Confirmed pediatric deaths ⁵ | 0 | 0 | 0 | 0 | 0 | 0 | 0 | 0 |

⁴ Reflects all influenza-associated hospitalizations reported from 10 hospitals located within Dallas County by week of any positive influenza tests.

⁵ Confirmed influenza-associated deaths of Dallas County residents <18 years of age

Table 3. Confirmed Influenza-associated Pediatric and Adult Deaths, Dallas County: 2017–2024 Seasons

| | 2017–2018 | 2018–2019 | 2019–2020 | 2021–2022 | 2022–2023 | 2023–2024 |
|-----------|-----------|-----------|-----------|-----------|-----------|-----------|
| Pediatric | 4 | 1 | 3 | 0 | 1 | 0 |
| Adult | 79 | 21 | 22 | 2 | ..** | ..** |

Data source(s): Reports of confirmed influenza-associated deaths, as defined in Table 2.

**The Data is not accurately available. Adult death is not reportable condition and not all adult death are reported to DCHHS.

*Indicates preliminary results which are subject to change with late-arriving data from surveillance sites designated for DCHHS’ seasonal influenza program

Figure 1. Influenza Positive Tests Reported to DCHHS by Hospital Laboratories: 2023–2024 Season

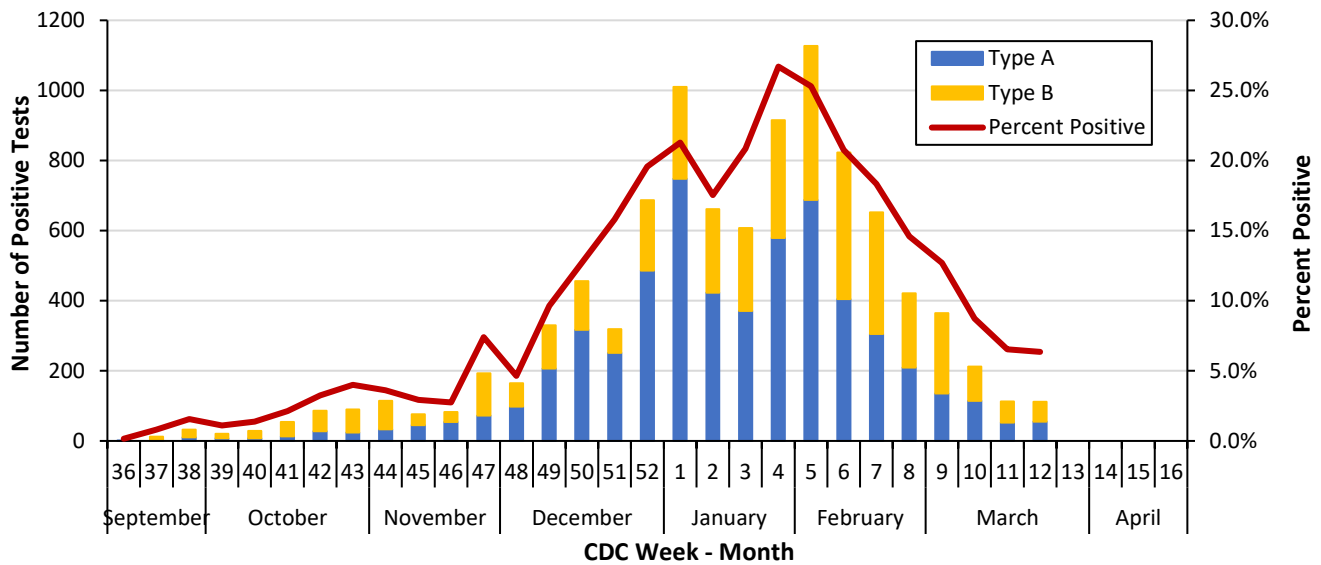


Figure 2. Influenza Positive Tests Reported to DCHHS by Hospital Laboratories: 2018–2019 and 2022-2024 Seasons

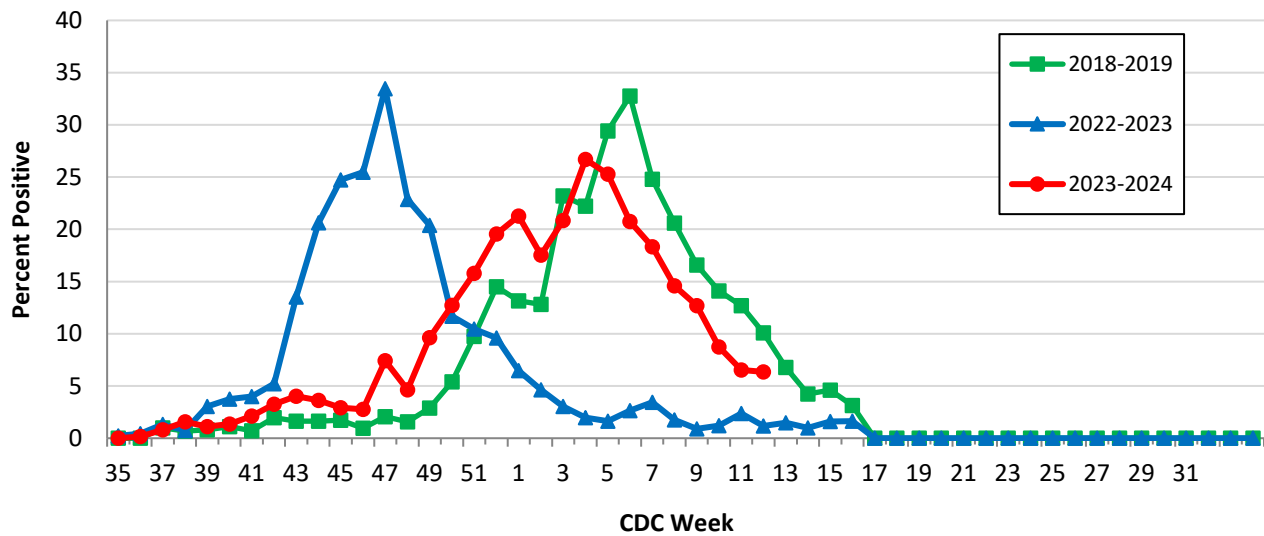


Table 4. Influenza Typing and Subtyping from Cumulative Dallas County, Texas, and U.S. Laboratory Surveillance Data: 2023–2024 Season

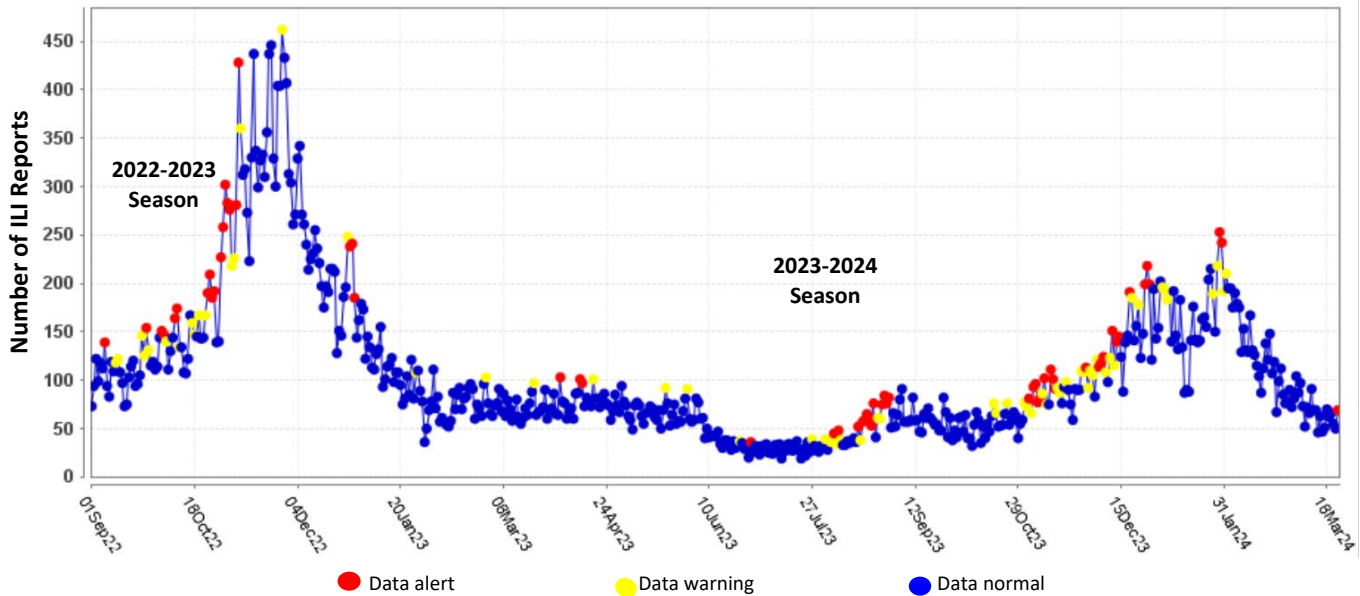
| | Dallas ¹ (n=104) | Texas ² (n=1,913) | U.S. ³ (n=93,464) |
|-------------------|--------------------------------|---------------------------------|---------------------------------|
| Influenza A | 24 (75.0%) | 432 (58.6%) | 23,805 (78.5%) |
| H1N1 2009 subtype | 19 (79.2%) | 289 (70.8%) | 14,150 (72.0%) |
| H3N2 subtype | 5 (20.8%) | 119 (29.2%) | 5,509 (28.0%) |
| Not subtyped | 0 | 24 | 4,146 |
| Influenza B | 8 (25.0%) | 305 (41.4%) | 6,504 (21.5%) |
| Yamagata strain | 0 (0.0%) | 0 (0.0%) | 0 (0.0%) |

¹ DCHHS LRN laboratory PCR testing of designated Dallas County surveillance site isolates; counts may not sum to total as samples can test positive for multiple subtypes

² DSHS 2023–2024 Texas Influenza Surveillance Information Activity Report available at <https://www.dshs.texas.gov/texas-respiratory-virus-surveillance-report>

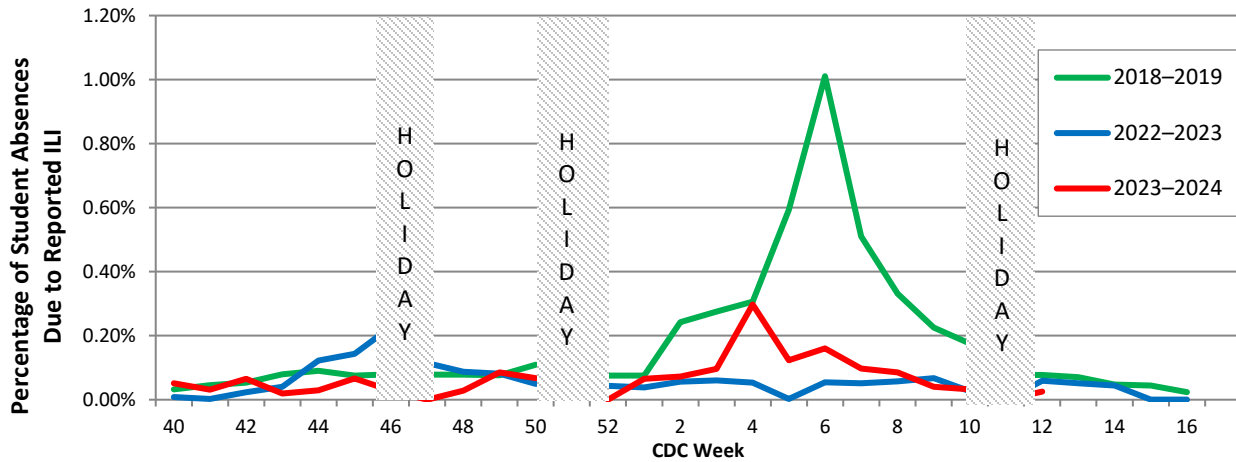
³ CDC FluView Weekly Influenza Surveillance Report available at <http://www.cdc.gov/flu/weekly/> *Only a subset of influenza B had lineage testing performed.

Figure 3. Syndromic Surveillance of Emergency Department Visits for Influenza-like Illness (ILI), Dallas County: September 1, 2022 – March 23, 2024



Data source: 18 emergency departments in Dallas County hospitals participating in the Electronic Surveillance System for the Early Notification of Community-based Epidemics (ESSENCE) voluntarily reporting the numbers of persons presenting with self-reported chief complaints of ILI.

Figure 4. Percentage of Student Absences Due to ILI by Week, Dallas County: 2018–2019 and 2022–2024 Seasons



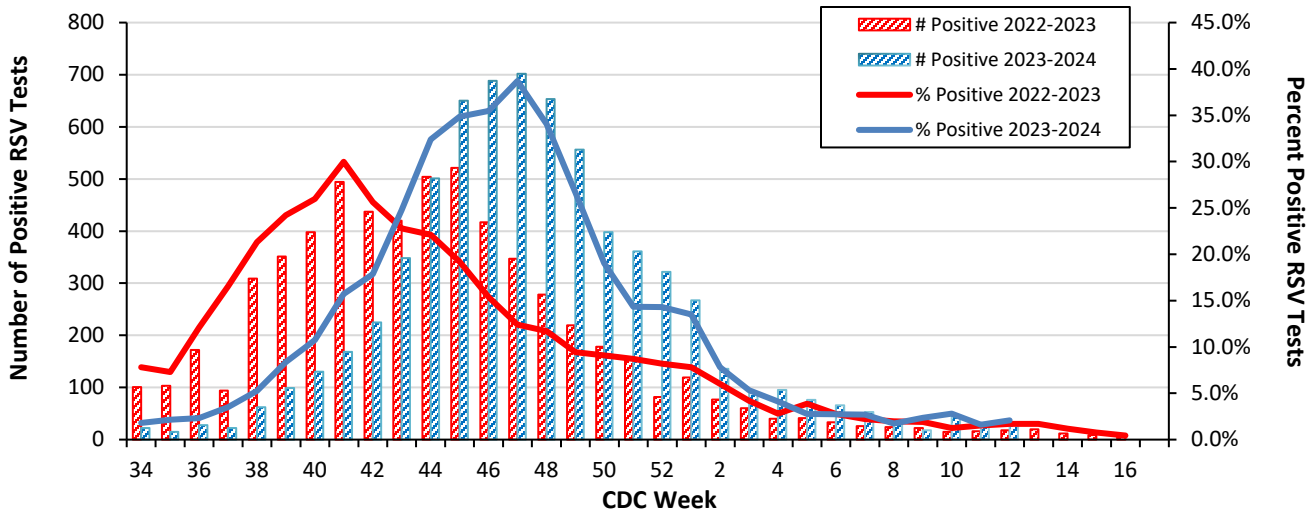
Data source: Voluntary reporting from Independent School Districts, private, and charter School representing over 600 elementary, middle, and secondary schools and over 344,000 students in Dallas County

Table 5. Non-Influenza Respiratory Virus Testing by North Texas Laboratories Reported to NREVSS, Week 12.

| Virus | Number of Laboratories Reporting* | Tests Performed | Total Positive Tests | Percentage of Tests Positive |
|--------------------------|-----------------------------------|-----------------|----------------------|------------------------------|
| Adenovirus (respiratory) | 2 | 695 | 44 | 6.3 |
| HMPV | 2 | 695 | 89 | 12.8 |
| Parainfluenza virus | 2 | 695 | 57 | 8.2 |
| Rhinovirus/Enterovirus | 2 | 695 | 236 | 34.0 |
| RSV | 2 | 1,346 | 28 | 2.1 |
| COVID-19 | 2 | 1,341 | 29 | 2.2 |

Data source: National Respiratory and Enteric Virus Surveillance System (NREVSS) and hospitals reporting directly to DCHHS

Figure 5. Number and Percent Positive RSV Rapid Antigen and PCR Tests by Week, NREVSS Surveillance Data, North Texas: 2022-2023 and 2023-2024 Seasons



Data source: National Respiratory and Enteric Virus Surveillance System (NREVSS) and hospitals reporting directly to DCHHS

Table 6. Number and Percent Positive RSV Rapid Antigen and PCR Tests by Week, NREVSS Surveillance Data, North Texas: September 3, 2023 – March 23, 2024

| Week Ending | 2/10 | 2/17 | 2/24 | 3/2 | 3/9 | 3/16 | 3/23 | 9/3/23–Present |
|----------------------------|-------|-------|-------|-----|-------|-------|-------|----------------|
| CDC Week | 6 | 7 | 8 | 9* | 10* | 11* | 12* | |
| RSV tests performed weekly | 2,412 | 1,959 | 1,907 | 768 | 1,615 | 1,490 | 1,346 | 49,141 |
| Total positive RSV tests | 66 | 53 | 33 | 18 | 45 | 24 | 28 | 6,844 |
| Percent positive RSV tests | 2.7 | 2.7 | 1.7 | 2.3 | 2.8 | 1.6 | 2.1 | |

*Indicates preliminary results which are subject to change as adjustments are made for late-arriving data

Data source: National Respiratory and Enteric Virus Surveillance System (NREVSS)

Please report any of the following patients to DCHHS:

- **Deaths of pediatric patients with confirmed influenza** (any subtype). We are requesting all pediatric influenza-associated deaths to be reported to facilitate specimen procurement and testing. (Please report *within 1 workday*).
- Suspected influenza infections involving institutional **outbreaks** (Please report *immediately*).
- Patients with **Novel influenza**. (Please report *immediately*).

Phone: **(214) 819-2004**

Email: **influenza.influenza@dallascounty.org**