



# Dallas County Health and Human Services 2023–2024 Influenza Surveillance Report

Week 13 ending March 30, 2024

## Epidemiologic Summary

- 4.4% of Influenza tests returned positive during week 13 within Dallas County.
- Eight Influenza-associated hospitalizations were reported during week 13 within Dallas County.
- Zero influenza-associated pediatric deaths have been reported during the 2023-2024 season in Dallas County.
- The overall school absenteeism rate was 5.9% of which 0.03% was attributed to influenza-like illness during week 13 of the schools reporting within Dallas County.
- 1.7% of RSV tests returned positive during week 13 in North Texas.

**Table 1.** Summary of Influenza Surveillance from Dallas County Hospitals and Hospital Laboratories

Week Ending	2/17	2/24	3/2	3/9	3/16	3/23	3/30	9/3/23– Present
CDC Week	7	8	9	10*	11*	12*	13*	
<b>Total Influenza PCR Tests</b>	2,850	2,380	2,547	2,286	1,468	1,272	1,485	<b>60,993</b>
Number of positive PCR tests	311	197	228	194	85	65	54	<b>6,193</b>
Percent of positive PCR tests	10.9	8.3	9.0	8.5	5.8	5.1	3.6	
<b>Total Rapid Influenza Diagnostic Tests</b>	705	504	330	141	260	488	224	<b>22,171</b>
Number of positive RIDTs	341	224	137	18	28	47	21	<b>3,646</b>
Percent of positive RIDTs	48.4	44.4	41.5	12.8	10.8	9.6	9.4	
<b>Total Influenza Tests Performed</b>	3,555	2,884	2,877	2,427	1,728	1,760	1,709	<b>83,164</b>
Total positive influenza tests <sup>1</sup>	652	421	365	212	113	112	75	<b>9,839</b>
Percent positive influenza tests	18.3	14.6	12.7	8.7	6.5	6.4	4.4	
Positive influenza A tests <sup>2</sup>	305	209	135	114	52	55	49	<b>5,791</b>
Positive influenza B tests	347	212	230	98	61	57	26	<b>4,048</b>

<sup>1</sup> Includes positive rapid antigen, PCR, DFA, or culture results

<sup>2</sup> Further subtyping is performed only by select hospital laboratories for specimens referred to DCHHS by institutions for PCR-testing

<sup>3</sup> Non-differentiated refers to rapid test results which did not differentiate between influenza A and B

**Table 2.** Summary of Influenza Hospitalizations and Deaths from Dallas County Hospitals, Vital Statistics and Medical Examiner’s Office

Week Ending	2/17	2/24	3/2	3/9	3/16	3/23	3/30	9/3/23– Present
CDC Week	7	8	9	10*	11*	12*	13*	
Influenza hospitalizations <sup>4</sup>	<b>60</b>	<b>71</b>	<b>54</b>	<b>25</b>	<b>8</b>	<b>14</b>	<b>8</b>	<b>1,369</b>
Influenza ICU admissions <sup>4</sup>	<b>7</b>	<b>12</b>	<b>8</b>	<b>3</b>	<b>1</b>	<b>1</b>	<b>2</b>	<b>219</b>
Confirmed pediatric deaths <sup>5</sup>	<b>0</b>	<b>0</b>	<b>0</b>	<b>0</b>	<b>0</b>	<b>0</b>	<b>0</b>	<b>0</b>

<sup>4</sup> Reflects all influenza-associated hospitalizations reported from 10 hospitals located within Dallas County by week of any positive influenza tests.

<sup>5</sup> Confirmed influenza-associated deaths of Dallas County residents <18 years of age

**Table 3.** Confirmed Influenza-associated Pediatric and Adult Deaths, Dallas County: 2017–2024 Seasons

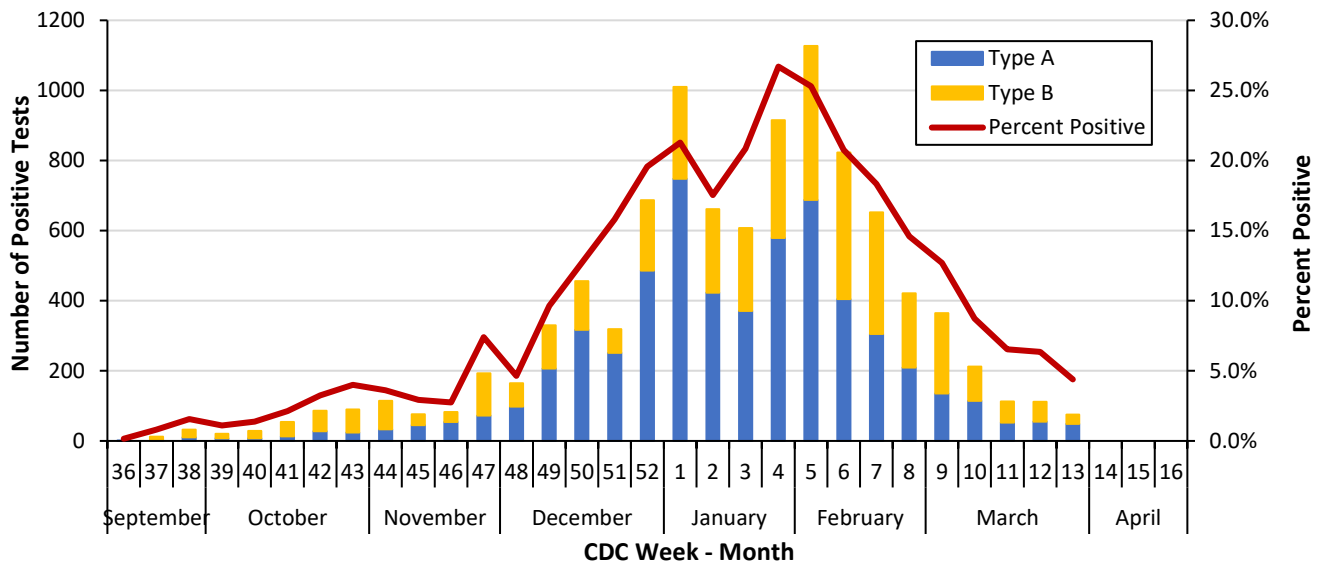
	2017–2018	2018–2019	2019–2020	2021–2022	2022–2023	2023–2024
Pediatric	4	1	3	0	1	0
Adult	79	21	22	2	..**	..**

Data source(s): Reports of confirmed influenza-associated deaths, as defined in Table 2.

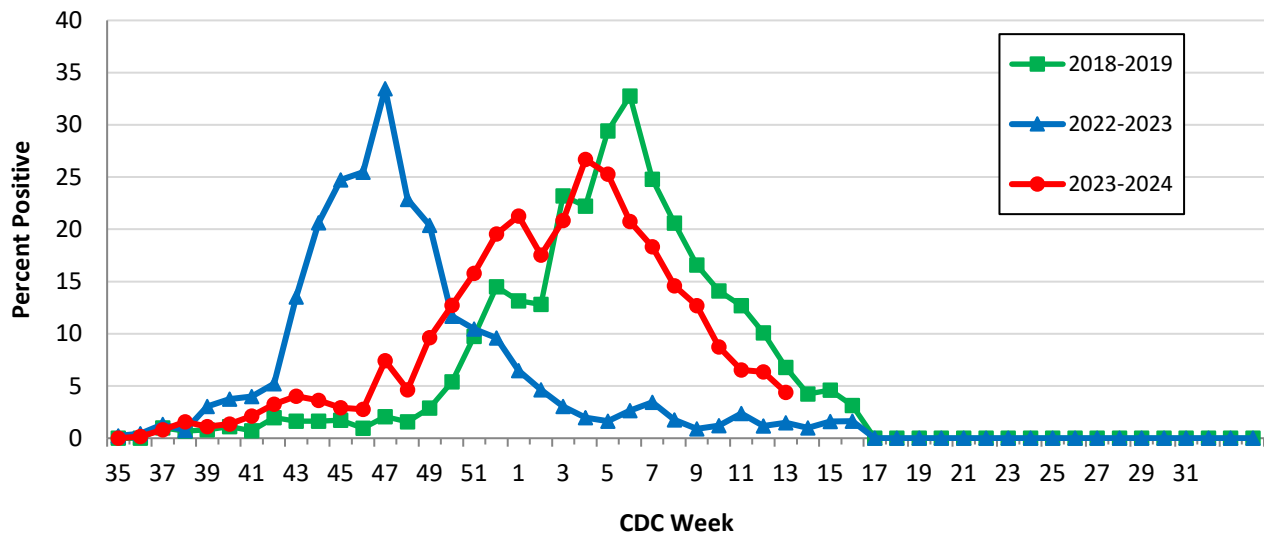
\*\*The Data is not accurately available. Adult death is not reportable condition and not all adult death are reported to DCHHS.

\*Indicates preliminary results which are subject to change with late-arriving data from surveillance sites designated for DCHHS’ seasonal influenza program

**Figure 1.** Influenza Positive Tests Reported to DCHHS by Hospital Laboratories: 2023–2024 Season



**Figure 2.** Influenza Positive Tests Reported to DCHHS by Hospital Laboratories: 2018–2019 and 2022-2024 Seasons

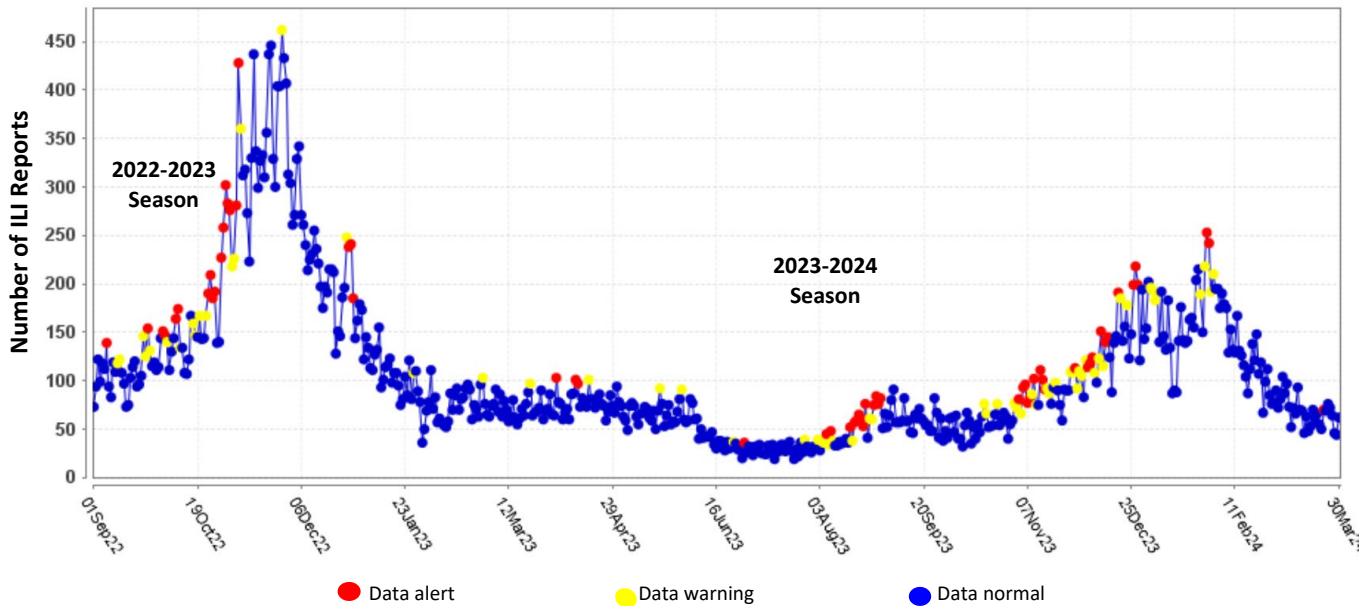


**Table 4.** Influenza Typing and Subtyping from Cumulative Dallas County, Texas, and U.S. Laboratory Surveillance Data: 2023–2024 Season

	Dallas <sup>1</sup> (n=106)	Texas <sup>2</sup> (n=2,003)	U.S. <sup>3</sup> (n=96,345)
Influenza A	24 (75.0%)	454 (59.3%)	24,500 (78%)
H1N1 2009 subtype	19 (79.2%)	292 (67.9%)	14,449 (71.2%)
H3N2 subtype	5 (20.8%)	138 (32.1%)	5,835 (28.8%)
Not subtyped	0	24	4,216
Influenza B	8 (25.0%)	312 (40.7%)	6,894 (22%)
Yamagata strain	0 (0.0%)	0 (0.0%)	0 (0.0%)

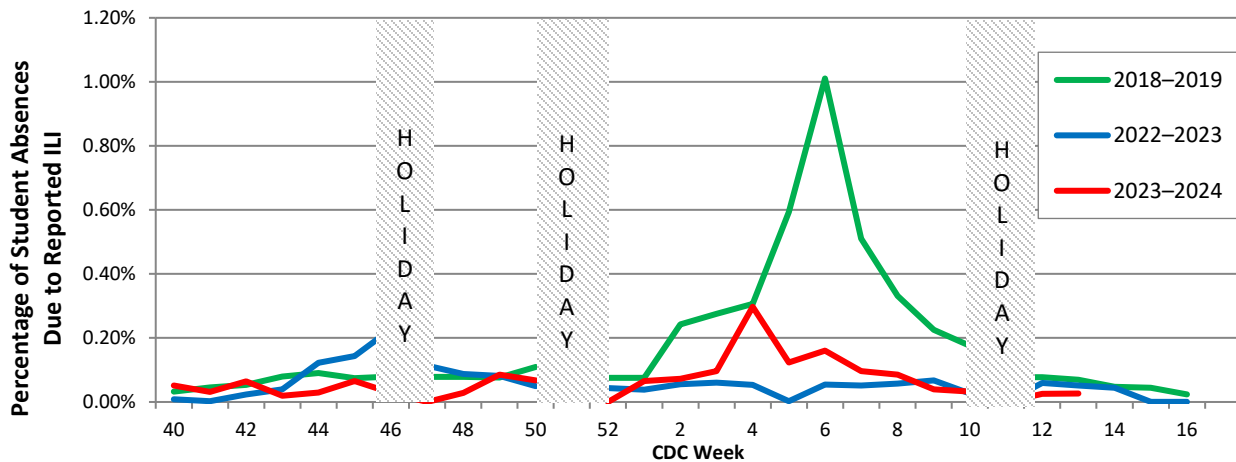
<sup>1</sup> DCHHS LRN laboratory PCR testing of designated Dallas County surveillance site isolates; counts may not sum to total as samples can test positive for multiple subtypes  
<sup>2</sup> DSHS 2023–2024 Texas Influenza Surveillance Information Activity Report available at <https://www.dshs.texas.gov/texas-respiratory-virus-surveillance-report>  
<sup>3</sup> CDC FluView Weekly Influenza Surveillance Report available at <http://www.cdc.gov/flu/weekly/> \*Only a subset of influenza B had lineage testing performed.

**Figure 3.** Syndromic Surveillance of Emergency Department Visits for Influenza-like Illness (ILI), Dallas County: September 1, 2022 – March 30, 2024



Data source: 18 emergency departments in Dallas County hospitals participating in the Electronic Surveillance System for the Early Notification of Community-based Epidemics (ESSENCE) voluntarily reporting the numbers of persons presenting with self-reported chief complaints of ILI.

**Figure 4.** Percentage of Student Absences Due to ILI by Week, Dallas County: 2018–2019 and 2022–2024 Seasons



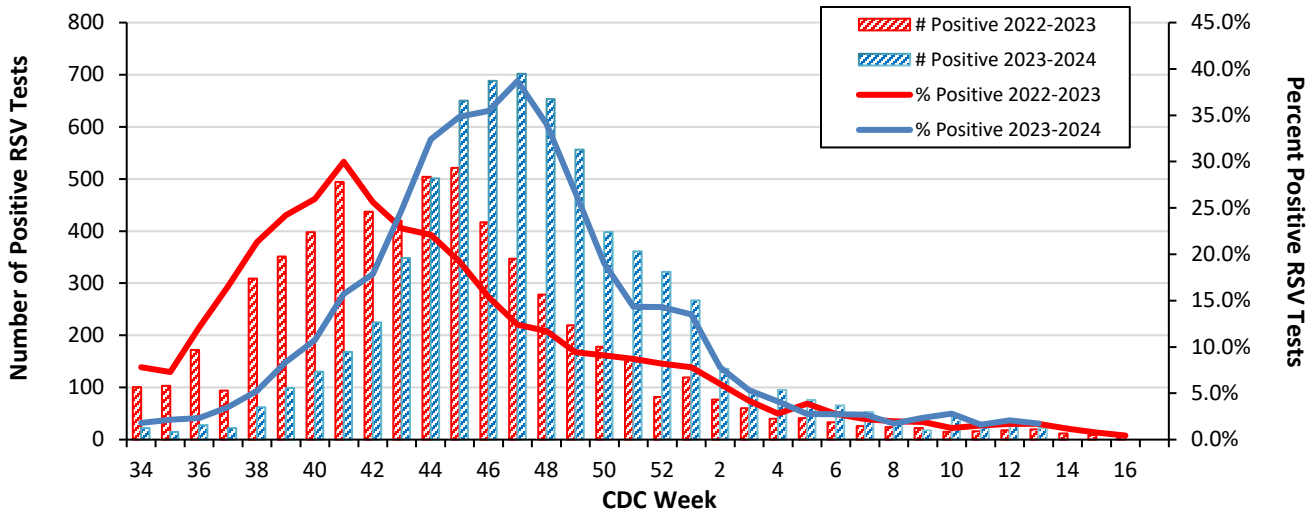
Data source: Voluntary reporting from Independent School Districts, private, and charter School representing over 600 elementary, middle, and secondary schools and over 344,000 students in Dallas County

**Table 5.** Non-Influenza Respiratory Virus Testing by North Texas Laboratories Reported to NREVSS, Week 13.

Virus	Number of Laboratories Reporting*	Tests Performed	Total Positive Tests	Percentage of Tests Positive
Adenovirus (respiratory)	2	673	25	3.7
HMPV	2	673	92	13.7
Parainfluenza virus	2	673	51	7.6
Rhinovirus/Enterovirus	2	673	237	35.2
RSV	2	1,280	22	1.7
COVID-19	2	1,249	25	2.0

Data source: National Respiratory and Enteric Virus Surveillance System (NREVSS) and hospitals reporting directly to DCHHS

**Figure 5.** Number and Percent Positive RSV Rapid Antigen and PCR Tests by Week, NREVSS Surveillance Data, North Texas: 2022-2023 and 2023-2024 Seasons



Data source: National Respiratory and Enteric Virus Surveillance System (NREVSS) and hospitals reporting directly to DCHHS

**Table 6.** Number and Percent Positive RSV Rapid Antigen and PCR Tests by Week, NREVSS Surveillance Data, North Texas: September 3, 2023 – March 30, 2024

Week Ending	2/17	2/24	3/2	3/9	3/16	3/23	3/30	9/3/23–Present
CDC Week	7	8	9	10*	11*	12*	13*	
RSV tests performed weekly	1,959	1,907	768	1,615	1,490	1,346	1,280	50,421
Total positive RSV tests	53	33	18	45	24	28	22	6,866
Percent positive RSV tests	2.7	1.7	2.3	2.8	1.6	2.1	1.7	

\*Indicates preliminary results which are subject to change as adjustments are made for late-arriving data

Data source: National Respiratory and Enteric Virus Surveillance System (NREVSS)

**Please report any of the following patients to DCHHS:**

- **Deaths of pediatric patients with confirmed influenza** (any subtype). We are requesting all pediatric influenza-associated deaths to be reported to facilitate specimen procurement and testing. (Please report *within 1 workday*).
- Suspected influenza infections involving institutional **outbreaks** (Please report *immediately*).
- Patients with **Novel influenza**. (Please report *immediately*).

Phone: **(214) 819-2004**

Email: **influenza.influenza@dallascounty.org**