



# Dallas County Health and Human Services 2024–2025 Influenza Surveillance Report

Week 45 ending November 9, 2024

## Epidemiologic Summary

- 0.9% of Influenza tests returned positive during week 45.
- Two Influenza-associated hospitalizations were reported during week 45.
- Zero influenza-associated pediatric deaths have been reported during the 2024-2025 season in Dallas County.
- The overall school absenteeism rate was 4.1% of which 0.03% was attributed to influenza-like illness during week 45 of the schools reporting within Dallas County.
- 16.9% of RSV tests returned positive during week 45.

**Table 1.** Summary of Influenza Surveillance from Dallas County Hospitals and Hospital Laboratories

Week Ending	10/5	10/12	10/19	10/26	11/2	11/9	9/15/24– Present
CDC Week	40	41	42*	43*	44*	45*	
<b>Total Influenza PCR Tests</b>	1,869	1,596	2,338	1,941	2,046	2,141	14,652
Number of positive PCR tests	7	3	8	7	10	14	64
Percent of positive PCR tests	0.4	0.2	0.3	0.4	0.5	0.7	
<b>Total Rapid Influenza Diagnostic Tests</b>	134	337	326	100	312	336	1,984
Number of positive RIDTs	6	8	15	8	14	9	73
Percent of positive RIDTs	4.5	2.4	4.6	8.0	4.5	2.7	
<b>Total Influenza Tests Performed</b>	2,003	1,933	2,664	2,041	2,358	2,477	16,636
Total positive influenza tests <sup>1</sup>	13	11	23	15	24	23	137
Percent positive influenza tests	0.6	0.6	0.9	0.7	1.0	0.9	
Positive influenza A tests <sup>2</sup>	5	5	14	8	12	18	77
Positive influenza B tests	8	6	9	7	12	5	60

<sup>1</sup> Includes positive rapid antigen, PCR, DFA, or culture results

<sup>2</sup> Further subtyping is performed only by select hospital laboratories for specimens referred to DCHHS by institutions for PCR-testing

<sup>3</sup> Non-differentiated refers to rapid test results which did not differentiate between influenza A and B

**Table 2.** Summary of Influenza Hospitalizations and Deaths from Dallas County Hospitals, Vital Statistics and Medical Examiner's Office

Week Ending	10/5	10/12	10/19	10/26	11/2	11/9	9/15/24– Present
CDC Week	40	41	42*	43*	44*	45*	
Influenza hospitalizations <sup>4</sup>	2	1	6	3	3	2	24
Influenza ICU admissions <sup>4</sup>	0	0	1	1	0	1	3
Confirmed pediatric deaths <sup>5</sup>	0	0	0	0	0	0	0

<sup>4</sup> Reflects all influenza-associated hospitalizations reported from 10 hospitals located within Dallas County by week of any positive influenza tests.

<sup>5</sup> Confirmed influenza-associated deaths of Dallas County residents <18 years of age

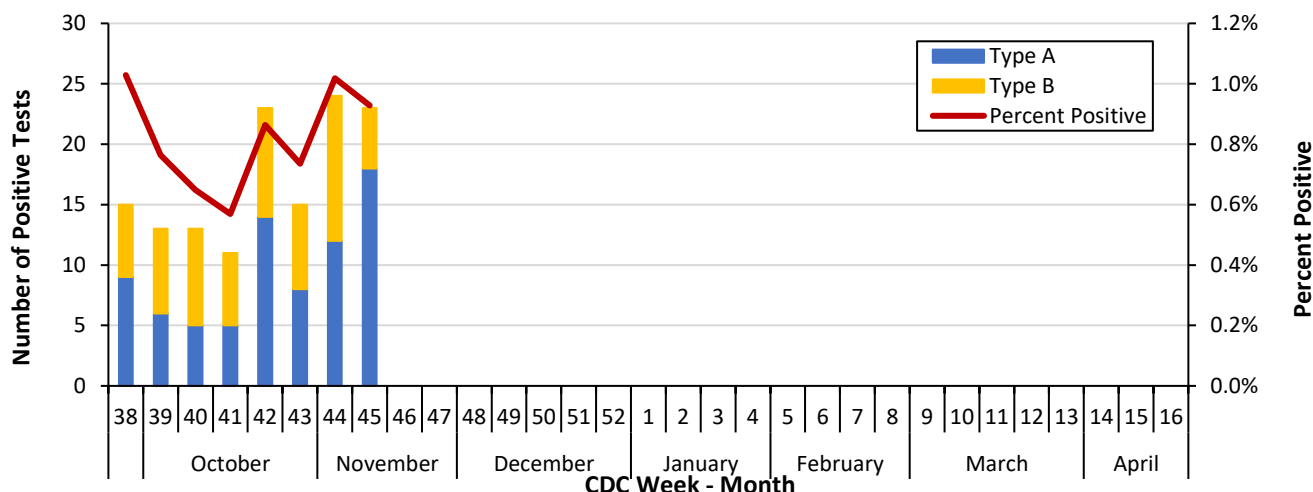
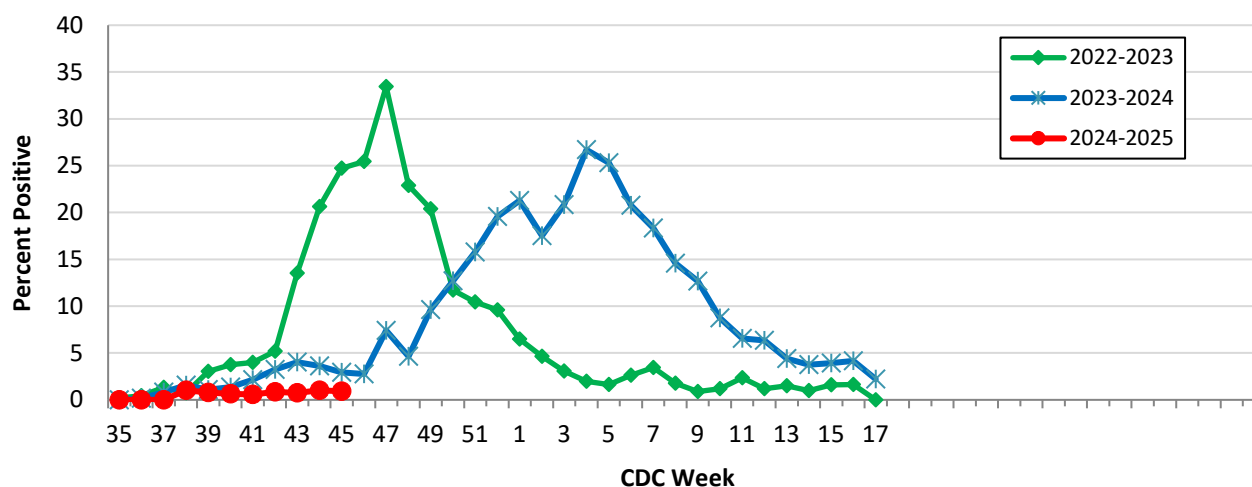
**Table 3.** Confirmed Influenza-associated Pediatric and Adult Deaths, Dallas County: 2018–2025 Seasons

	2018–2019	2019–2020	2021–2022	2022–2023	2023–2024	2024–2025
Pediatric	1	3	0	1	0	0
Adult	21	22	2	-	-	-**

Data source(s): Reports of confirmed influenza-associated deaths, as defined in Table 2.

\*\*The Data is not accurately available. Adult death is not reportable condition and not all adult deaths are reported to DCHHS.

\*Indicates preliminary results which are subject to change with late-arriving data from surveillance sites designated for DCHHS' seasonal influenza program

**Figure 1.** Influenza Positive Tests Reported to DCHHS by Hospital Laboratories: 2024–2025 Season**Figure 2.** Influenza Positive Tests Reported to DCHHS by Hospital Laboratories: 2022-2025 Seasons**Table 4.** Influenza Typing and Subtyping from Cumulative Dallas County, Texas, and U.S. Laboratory Surveillance Data: 2024–2025 Season

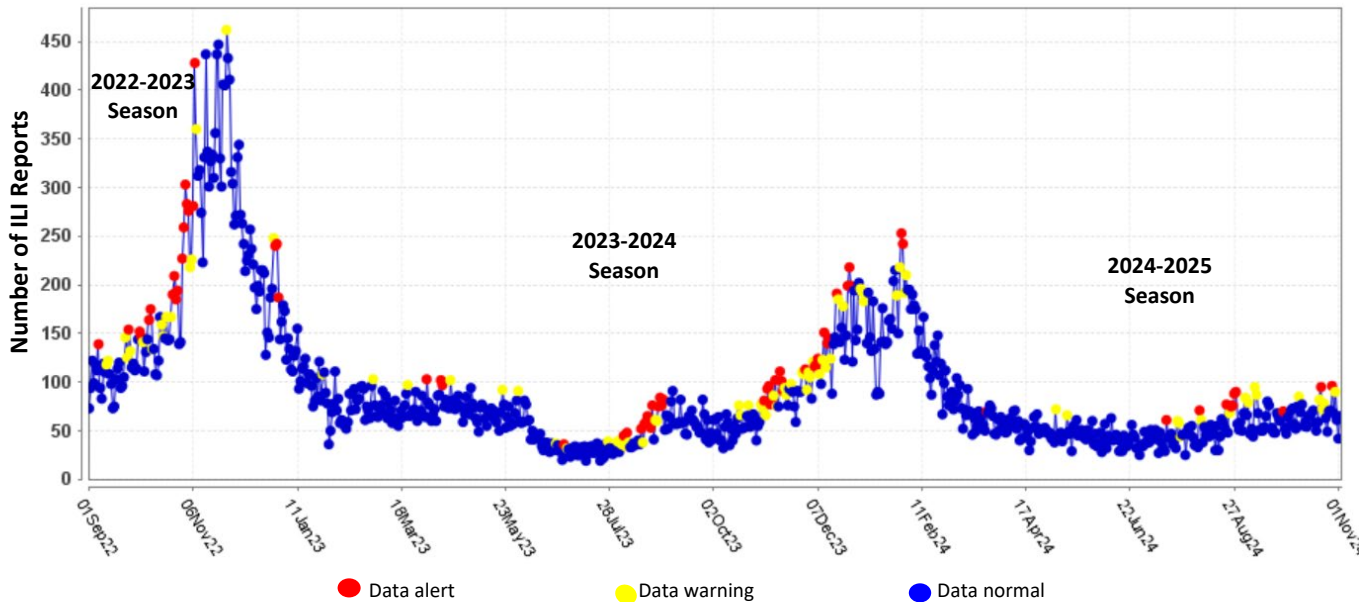
	Dallas <sup>1</sup> (n=11)	Texas <sup>2</sup> (n=332)	U.S. <sup>3</sup> (n=7,385)
Influenza A	1 (100.0%)	8 (100.0%)	1,236 (95.2%)
H1N1 2009 subtype	1 (100.0%)	5 (62.5%)	499 (47.1%)
H3N2 subtype	0 (0.0%)	3 (37.5%)	511 (48.3%)
H5*	NA	NA	49 (4.6%)
Not subtyped	0	0	177
Influenza B	0 (0.0%)	0 (0.0%)	62 (4.8%)
Victoria lineage	0 (0.0%)	0 (0.0%)	37 (100%)
Not lineage	0	0	25

<sup>1</sup> DCHHS LRN laboratory PCR testing of designated Dallas County surveillance site isolates; counts may not sum to total as samples can test positive for multiple subtypes

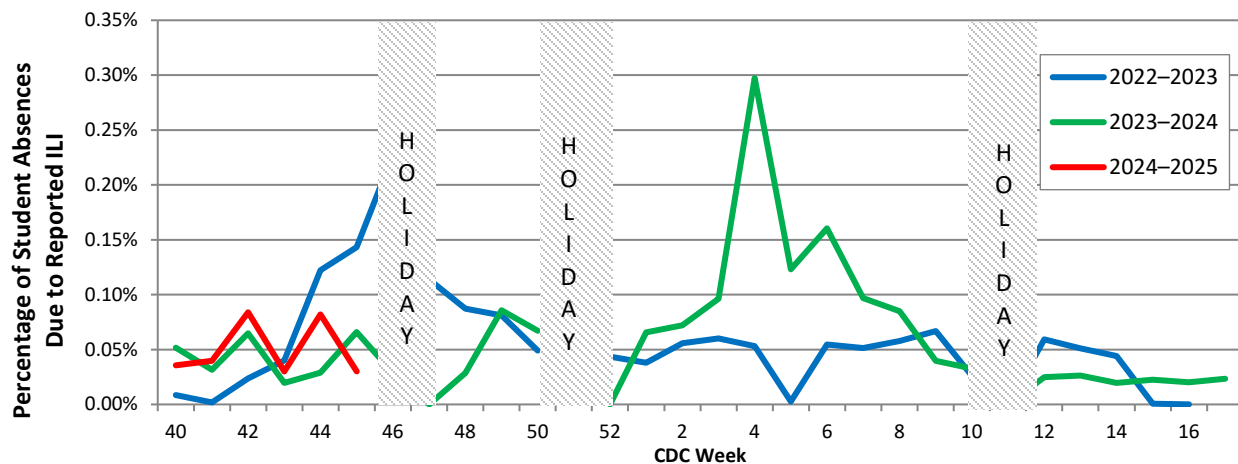
<sup>2</sup> DSHS 2024–2025 Texas Influenza Surveillance Information Activity Report available at <https://www.dshs.texas.gov/texas-respiratory-virus-surveillance-report>

<sup>3</sup> CDC FluView Weekly Influenza Surveillance Report available at <https://www.cdc.gov/fluview/>

\*This data reflects specimens tested and the number determined to be positive for influenza viruses at the public health labs (specimens tested is not the same as cases). It does not reflect specimens tested only at CDC and could include more than one specimen tested per person. The guidance for influenza A/H5 testing recommends testing both a conjunctival and respiratory swab for people with conjunctivitis which has resulted in more specimens testing positive for influenza A/H5 than the number of human H5 cases.

**Figure 3.** Syndromic Surveillance of Emergency Department Visits for Influenza-like Illness (ILI), Dallas County: September 1, 2022 – November 9, 2024

Data source: 18 emergency departments in Dallas County hospitals participating in the Electronic Surveillance System for the Early Notification of Community-based Epidemics (ESSENCE) voluntarily reporting the numbers of persons presenting with self-reported chief complaints of ILI.

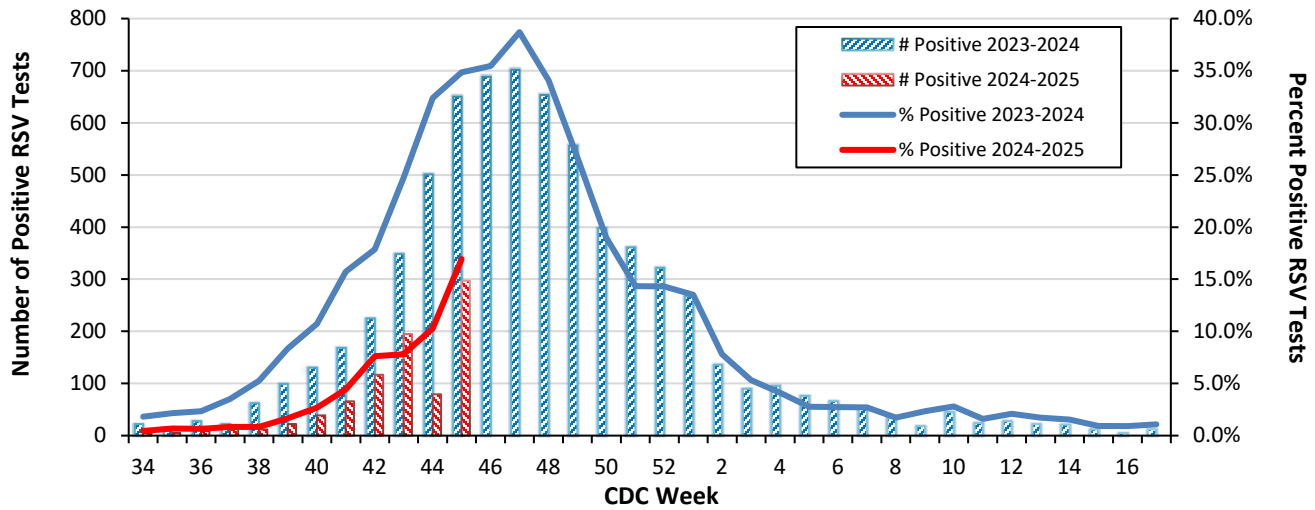
**Figure 4.** Percentage of Student Absences Due to ILI by Week, Dallas County: 2022-2025 Seasons

Data source: Voluntary reporting from Independent School Districts, private, and charter School representing over 600 elementary, middle, and secondary schools and over 345,000 students in Dallas County

**Table 5.** Non-Influenza Respiratory Virus Testing by North Texas Laboratories Reported to NREVSS, Week 45

Virus	Number of Laboratories Reporting*	Tests Performed	Total Positive Tests	Percentage of Tests Positive
Adenovirus (respiratory)	2	1,003	53	5.3
HMPV	2	1,004	9	0.9
Parainfluenza virus	2	1,004	74	7.4
Rhinovirus/Enterovirus	2	1,004	378	37.7
RSV	2	1,754	297	16.9
COVID-19	2	1,725	10	0.6

Data source: National Respiratory and Enteric Virus Surveillance System (NREVSS) and hospitals reporting directly to DCHHS

**Figure 5.** Number and Percent Positive RSV Rapid Antigen and PCR Tests by Week, NREVSS Surveillance Data, North Texas: 2023-2024 and 2024-2025 Seasons

Data source: National Respiratory and Enteric Virus Surveillance System (NREVSS) and hospitals reporting directly to DCHHS

**Table 6.** Number and Percent Positive RSV Rapid Antigen and PCR Tests by Week, NREVSS Surveillance Data, North Texas: September 15, 2024 – November 9, 2024

Week Ending	10/5	10/12	10/19	10/26	11/2	11/9	9/15/24– Present
CDC Week	40	41	42*	43*	44*	45*	
RSV tests performed weekly	1,458	1,492	1,538	2,496	767	1,754	12,280
Total positive RSV tests	39	66	117	195	79	297	827
Percent positive RSV tests	2.7	4.4	7.6	7.8	10.3	16.9	

\*Indicates preliminary results which are subject to change as adjustments are made for late-arriving data

Data source: National Respiratory and Enteric Virus Surveillance System (NREVSS)

#### Please report any of the following patients to DCHHS:

- **Deaths of pediatric patients with confirmed influenza** (any subtype). We are requesting all pediatric influenza-associated deaths to be reported to facilitate specimen procurement and testing. (Please report *within 1 workday*).
- Suspected influenza infections involving institutional **outbreaks** (Please report *immediately*).
- Patients with **Novel influenza**. (Please report *immediately*).

Phone: (214) 819-2004

Email: [influenza.influenza@dallascounty.org](mailto:influenza.influenza@dallascounty.org)