



# Dallas County Health and Human Services 2024–2025 Influenza Surveillance Report

Week 4 ending January 25, 2025

## Epidemiologic Summary

- 34.9% of Influenza tests returned positive during week 4.
- One-hundred and eighty-five Influenza-associated hospitalizations were reported during week 4.
- Zero influenza-associated pediatric deaths have been reported during the 2024-2025 season in Dallas County.
- The overall school absenteeism rate was 6.2% of which 0.2% was attributed to influenza-like illness during week 4 of the schools reporting within Dallas County.
- 7.7% of RSV tests returned positive during week 4.

**Table 1.** Summary of Influenza Surveillance from Dallas County Hospitals and Hospital Laboratories

Week Ending	12/21	12/28	1/4	1/11	1/18	1/25	9/15/24– Present
CDC Week	51	52	1*	2*	3*	4*	
<b>Total Influenza PCR Tests</b>	2,557	2,838	2,772	2,397	3,415	3,111	42,874
Number of positive PCR tests	351	682	642	573	842	1,117	4,599
Percent of positive PCR tests	13.7	24.0	23.2	23.9	24.7	35.9	
<b>Total Rapid Influenza Diagnostic Tests</b>	846	477	645	491	581	718	6,605
Number of positive RIDTs	75	128	119	94	151	219	904
Percent of positive RIDTs	8.9	26.8	18.4	19.1	26.0	30.5	
<b>Total Influenza Tests Performed</b>	3,403	3,315	3,417	2,888	3,996	3,829	49,479
Total positive influenza tests <sup>1</sup>	426	810	761	667	993	1,336	5,503
Percent positive influenza tests	12.5	24.4	22.3	23.1	24.8	34.9	
Positive influenza A tests <sup>2</sup>	413	790	741	653	970	1,306	5,280
Positive influenza B tests	13	20	20	14	23	30	223

<sup>1</sup> Includes positive rapid antigen, PCR, DFA, or culture results

<sup>2</sup> Further subtyping is performed only by select hospital laboratories for specimens referred to DCHHS by institutions for PCR-testing

<sup>3</sup> Non-differentiated refers to rapid test results which did not differentiate between influenza A and B

**Table 2.** Summary of Influenza Hospitalizations and Deaths from Dallas County Hospitals, Vital Statistics and Medical Examiner's Office

Week Ending	12/21	12/28	1/4	1/11	1/18	1/25	9/15/24– Present
CDC Week	51	52	1*	2*	3*	4*	
Influenza hospitalizations <sup>4</sup>	50	92	110	101	172	185	781
Influenza ICU admissions <sup>4</sup>	6	11	19	13	25	38	126
Confirmed pediatric deaths <sup>5</sup>	0	0	0	0	0	0	0

<sup>4</sup> Reflects all influenza-associated hospitalizations reported from 10 hospitals located within Dallas County by week of any positive influenza tests.

<sup>5</sup> Confirmed influenza-associated deaths of Dallas County residents <18 years of age

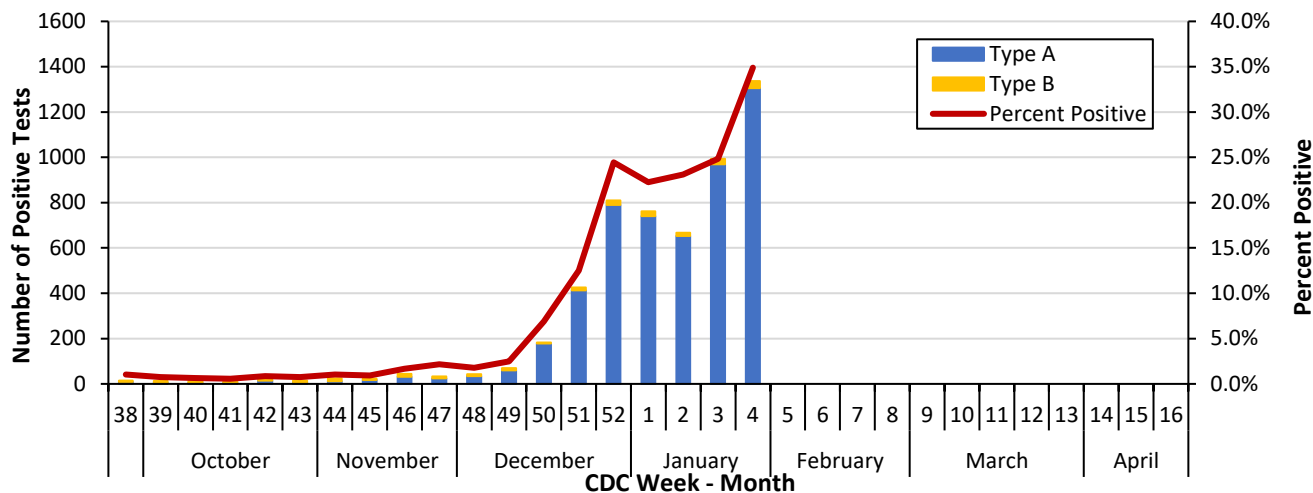
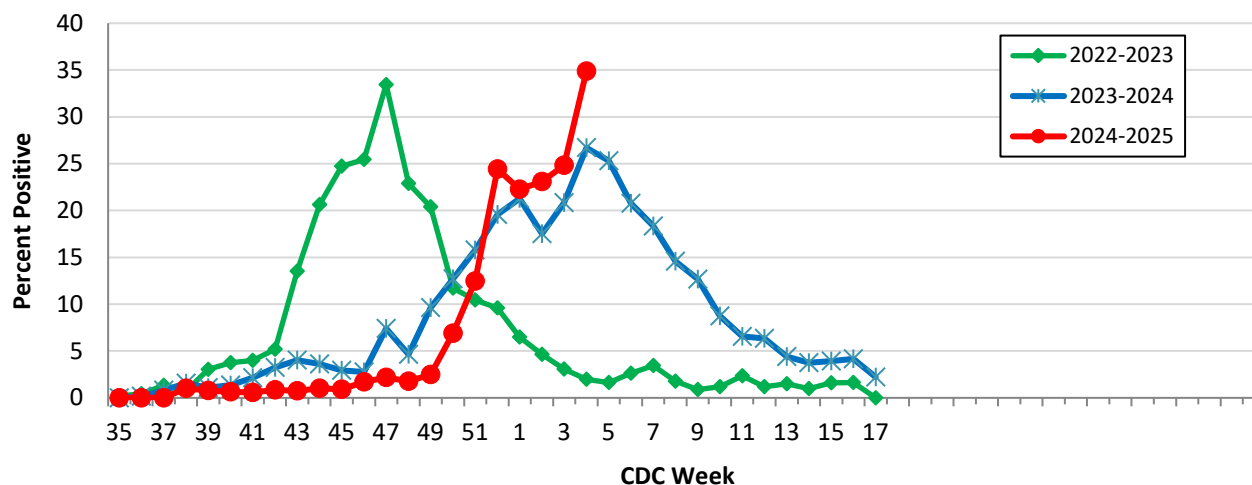
**Table 3.** Confirmed Influenza-associated Pediatric and Adult Deaths, Dallas County: 2018–2025 Seasons

	2018–2019	2019–2020	2021–2022	2022–2023	2023–2024	2024–2025
Pediatric	1	3	0	1	0	0
Adult	21	22	2	-	-	-**

Data source(s): Reports of confirmed influenza-associated deaths, as defined in Table 2.

\*\*The Data is not accurately available. Adult death is not reportable condition, and not all adult deaths are reported to DCHHS.

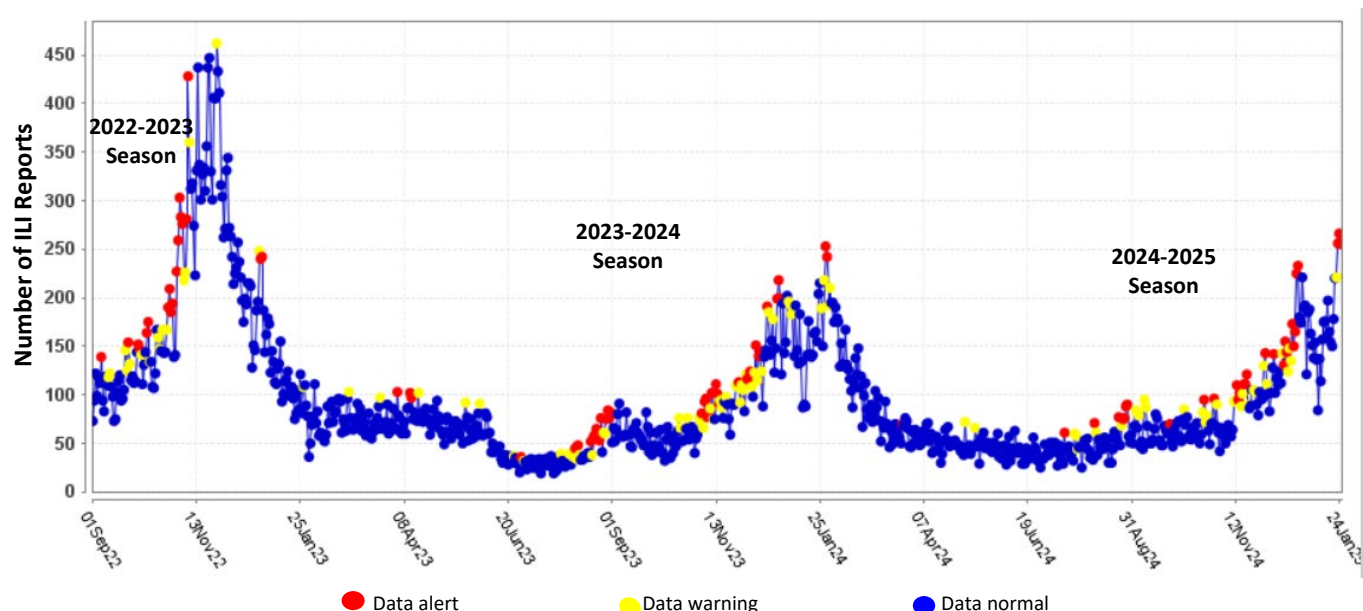
\*Indicates preliminary results which are subject to change with late-arriving data from surveillance sites designated for DCHHS' seasonal influenza program

**Figure 1.** Influenza Positive Tests Reported to DCHHS by Hospital Laboratories: 2024—2025 Season**Figure 2.** Influenza Positive Tests Reported to DCHHS by Hospital Laboratories: 2022-2025 Seasons**Table 4.** Influenza Typing and Subtyping from Cumulative Dallas County, Texas, and U.S. Laboratory Surveillance Data: 2024—2025 Season

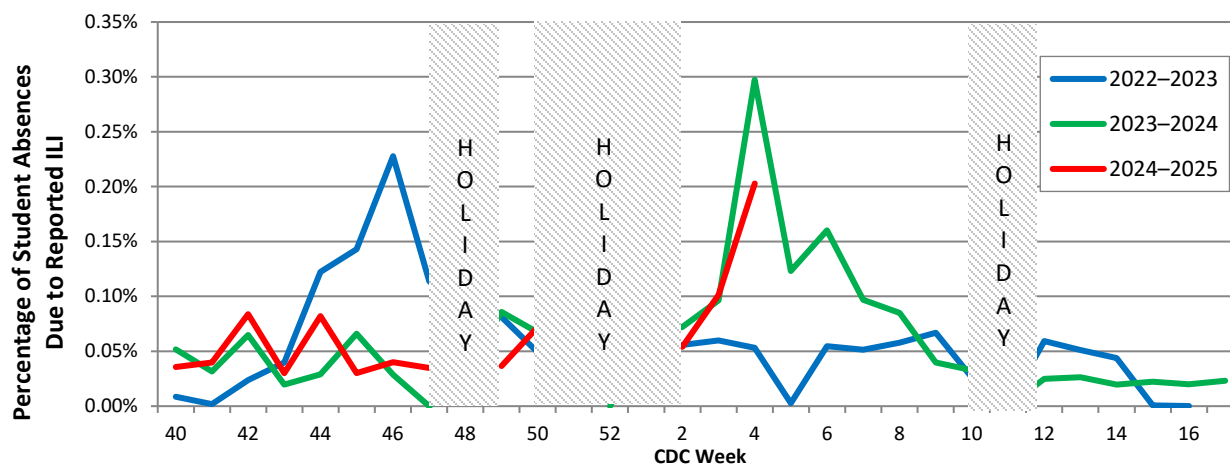
	Dallas <sup>1</sup> (n=93)	Texas <sup>2</sup> (n=1,312)	U.S. <sup>3</sup> (n=50,454)
Influenza A	60 (98.4%)	386 (100.0%)	29,473 (97.4%)
H1N1 2009 subtype	26 (43.3%)	147 (38.1%)	12,005 (46.0%)
H3N2 subtype	34 (56.7%)	239 (61.9%)	13,999 (53.7%)
H5	NA	NA	78* (0.3%)
Not subtyped	0	0	3,391
Influenza B	1 (1.6%)	0 (0.0%)	800 (2.6%)
Victoria lineage	1 (100.0%)	0 (0.0%)	382 (100.0%)
Not lineaged	0	0	418

<sup>1</sup> DCHHS LRN laboratory PCR testing of designated Dallas County surveillance site isolates; counts may not sum to total as samples can test positive for multiple subtypes<sup>2</sup> DSHS 2024–2025 Texas Influenza Surveillance Information Activity Report available at <https://www.dshs.texas.gov/texas-respiratory-virus-surveillance-report><sup>3</sup> CDC FluView Weekly Influenza Surveillance Report available at <https://www.cdc.gov/fluview/>

\*This data reflects specimens tested and the number determined to be positive for influenza viruses at the public health labs (specimens tested is not the same as cases). It does not reflect specimens tested only at CDC and could include more than one specimen tested per person. The guidance for influenza A/H5 testing recommends testing both a conjunctival and respiratory swab for people with conjunctivitis which has resulted in more specimens testing positive for influenza A/H5 than the number of human H5 cases.

**Figure 3.** Syndromic Surveillance of Emergency Department Visits for Influenza-like Illness (ILI), Dallas County: September 1, 2022 –January 25, 2025

Data source: 18 emergency departments in Dallas County hospitals participating in the Electronic Surveillance System for the Early Notification of Community-based Epidemics (ESSENCE) voluntarily reporting the numbers of persons presenting with self-reported chief complaints of ILI.

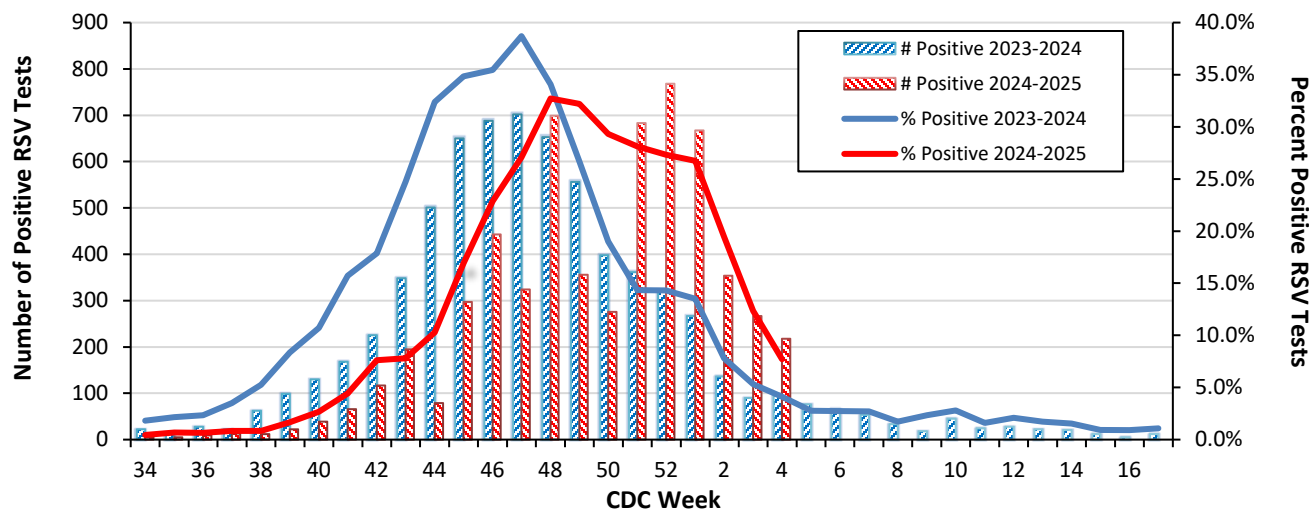
**Figure 4.** Percentage of Student Absences Due to ILI by Week, Dallas County: 2022-2025 Seasons

Data source: Voluntary reporting from Independent School Districts, private, and charter School representing over 600 elementary, middle, and secondary schools and over 345,000 students in Dallas County

**Table 5.** Non-Influenza Respiratory Virus Testing by North Texas Laboratories Reported to NREVSS, Week 4

Virus	Number of Laboratories Reporting*	Tests Performed	Total Positive Tests	Percentage of Tests Positive
Adenovirus (respiratory)	2	1,015	43	4.2
HMPV	2	1,015	21	2.1
Parainfluenza virus	2	1,015	24	2.4
Rhinovirus/Enterovirus	2	1,015	229	22.6
RSV	2	2,823	218	7.7
COVID-19	2	2,786	67	2.4

Data source: National Respiratory and Enteric Virus Surveillance System (NREVSS) and hospitals reporting directly to DCHHS

**Figure 5.** Number and Percent Positive RSV Rapid Antigen and PCR Tests by Week, NREVSS Surveillance Data, North Texas: 2023-2024 and 2024-2025 Seasons

Data source: National Respiratory and Enteric Virus Surveillance System (NREVSS) and hospitals reporting directly to DCHHS

**Table 6.** Number and Percent Positive RSV Rapid Antigen and PCR Tests by Week, NREVSS Surveillance Data, North Texas: September 15, 2024 – January 25, 2025

Week Ending	12/21	12/28	1/4	1/11	1/18	1/25	9/15/24– Present
CDC Week	51	52	1*	2*	3*	4*	
RSV tests performed weekly	2,430	2,811	2,494	1,820	2,164	2,823	34,133
Total positive RSV tests	683	768	667	354	267	218	5,882
Percent positive RSV tests	28.1	27.3	26.7	19.5	12.3	7.7	

\*Indicates preliminary results which are subject to change as adjustments are made for late-arriving data

Data source: National Respiratory and Enteric Virus Surveillance System (NREVSS)

#### Please report any of the following patients to DCHHS:

- **Deaths of pediatric patients with confirmed influenza** (any subtype). We are requesting all pediatric influenza-associated deaths to be reported to facilitate specimen procurement and testing. (Please report *within 1 workday*).
- Suspected influenza infections involving institutional **outbreaks** (Please report *immediately*).
- Patients with **Novel influenza**. (Please report *immediately*).

Phone: (214) 819-2004

Email: [influenza.influenza@dallascounty.org](mailto:influenza.influenza@dallascounty.org)