



Dallas County Health and Human Services 2019–2020 Influenza Surveillance Report

Week 07 ending February 15, 2020

Epidemiologic Summary

- Influenza activity remains high in Dallas County, with 20.2% of tests returning positive during week 7.
- Over the past week (Week 7), daily number of emergency department visits for chief complaints of influenza-like illness in Dallas County remains high. One-hundred and twenty (120) new influenza-associated hospitalizations were reported during week 7.
- RSV activity is low with 3.4% of tests from the surveillance sites reported as positive.

Table 1. Summary of Influenza Surveillance from Dallas County Hospitals and Hospital Laboratories

Week Ending	01/11	01/18	01/25	02/01	02/08	02/15	9/08/19 – Present
CDC Week	2	3	4	5	6*	7*	
Total Influenza PCR Tests	1,633	1,635	1,691	1,877	1,749	1,432	28,703
Number of positive PCR tests	407	426	457	451	404	323	5,097
Percent of positive PCR tests	24.9	26.1	27.0	24.0	23.1	22.6	
Total Rapid Influenza Diagnostic Tests	2,828	3,033	3,212	3,563	2,778	1,824	50,627
Number of positive RIDTs	765	996	939	951	642	334	11,419
Percent of positive RIDTs	27.1	32.8	29.2	26.7	23.1	18.3	
Total Influenza Tests Performed	4,461	4,668	4,903	5,440	4,527	3,256	79,336
Total positive influenza tests ¹	1,172	1,422	1,396	1,402	1,046	657	16,516
Percent positive influenza tests	26.3	30.5	28.5	25.8	23.1	20.2	
Positive influenza A tests ²	706	1,015	1,163	1,229	949	597	7,663
Positive influenza B tests	466	407	233	173	97	60	8,853
Non-differentiated influenza tests ³	0	1	1	1	0	0	8

¹ Includes positive rapid antigen, PCR, DFA, or culture results

² Further subtyping is performed only by select hospital laboratories for specimens referred to DCHHS by institutions for PCR-testing

³ Non-differentiated refers to rapid test results which did not differentiate between influenza A and B

Table 2. Summary of Influenza Hospitalizations and Deaths from Dallas County Hospitals, Vital Statistics and Medical Examiner's Office

Week Ending	01/04	01/11	01/18	01/25	02/01	02/08	02/15	02/22	9/08/19– Present
CDC Week	1	2	3	4	5	6*	7*	8*	
Influenza hospitalizations ⁴	135	115	125	190	208	154	120	4	1,595
Influenza ICU admissions ⁴	26	18	25	25	27	25	22	4	233
Confirmed pediatric deaths ⁵	0	0	1	0	0	0	0	0	1
Confirmed adult deaths ⁶	1	4	2	1	0	0	0	0	16
Possible influenza-associated deaths ⁷	0	1	1	4	2	0	0	0	12

⁴ Reflects all influenza-associated hospitalizations reported from 14 hospitals located within Dallas County by week of any positive influenza tests.

⁵ Confirmed influenza-associated deaths of Dallas County residents <18 years of age

⁶ Confirmed influenza-associated deaths as defined by a positive laboratory test and any of the following: (1) death certificate denotation, (2) medical record documentation of compatible symptoms and clear progression from illness to death, or (3) determination by the County Medical Examiner's office (ME) of no alternate cause of death. Deaths occurring outside of influenza season require a positive PCR result in order to meet laboratory criteria. Positive RIDT will meet laboratory criteria after the start of flu season.

⁷ Possible influenza-associated deaths are defined as cases with laboratory-confirmed influenza, but pending final autopsy results for determination of primary cause of death

Table 3. Confirmed Influenza-associated Pediatric and Adult Deaths, Dallas County: 2014–2020 Seasons

	2014–2015	2015–2016	2016–2017	2017–2018	2018–2019	2019–2020
Pediatric	0	1	1	4	1	1
Adult	19	14	16	79	21	16

Data source(s): Reports of confirmed influenza-associated deaths, as defined in Table 2.

*Indicates preliminary results which are subject to change with late-arriving data from surveillance sites designated for DCHHS' seasonal influenza program

Figure 1. Influenza Positive Tests Reported to DCHHS by Hospital Laboratories: 2019—2020 Season

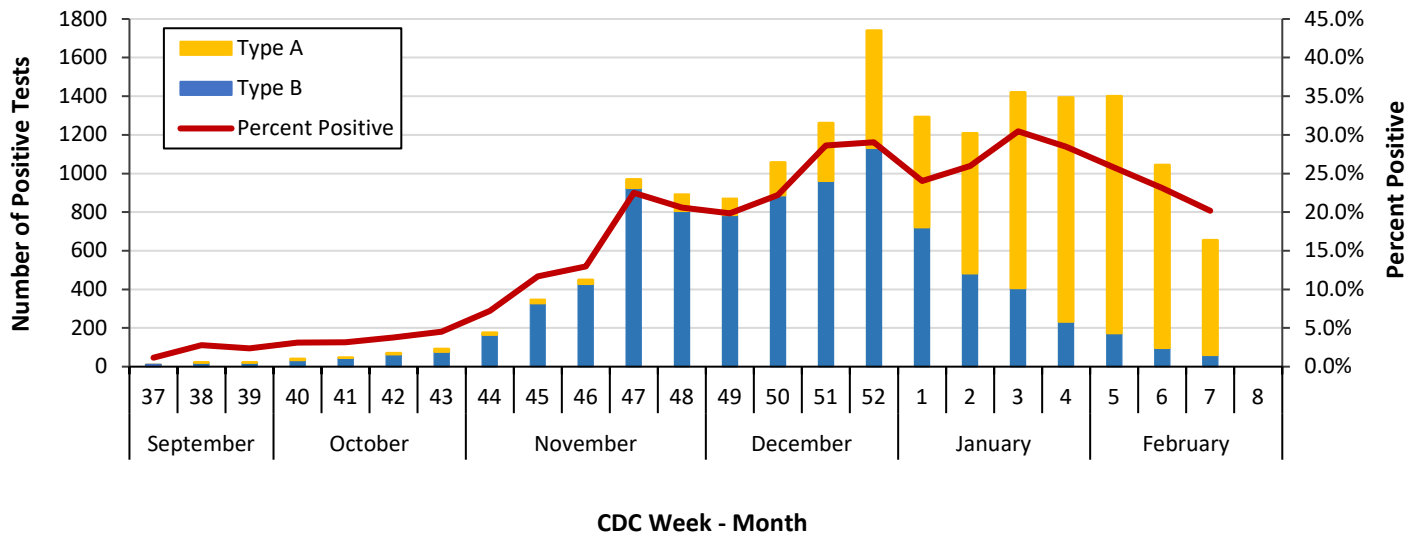


Figure 2. Influenza Positive Tests Reported to DCHHS by Hospital Laboratories: 2017—2020 Seasons

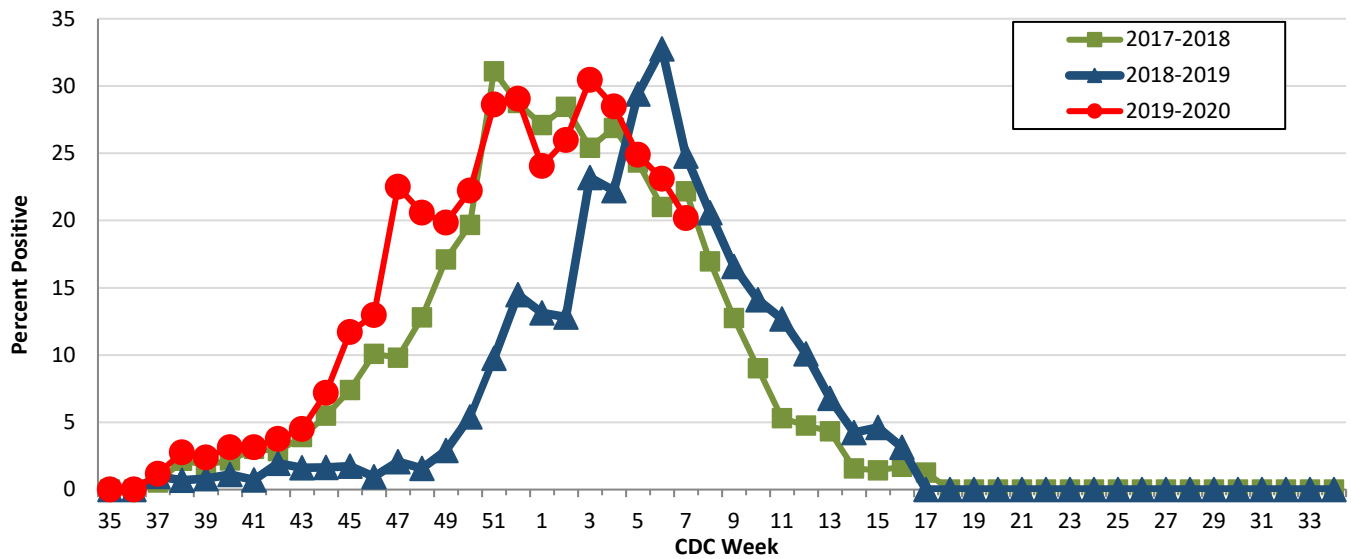


Table 4. Influenza Typing and Subtyping from Cumulative Dallas County, Texas, and U.S. Laboratory Surveillance Data: 2019—2020 Season

	Dallas ¹ (n=366)	Texas ² (n=1,719)	U.S. ³ (n=57,630)
Influenza A	155 (62.8%)	461 (47.9%)	16,160 (51.1%)
H1N1 2009 subtype	155 (100.0%)	436 (96.3%)	14,320 (90.9%)
H3N2 subtype	0 (0.0%)	17 (3.8%)	1,427 (9.1%)
Not subtyped	0	8	413
Influenza B	92 (37.2%)	500 (52.0%)	15,478 (48.9%)
Yamagata strain	4 (4.3%)	4 (0.9%)	191 (1.6%)

¹ DCHHS LRN laboratory PCR testing of designated Dallas County surveillance site isolates; counts may not sum to total as samples can test positive for multiple subtypes
² DSHS 2019—2020 Texas Influenza Surveillance Information Activity Report available at <https://www.dshs.state.tx.us/idcu/disease/influenza/surveillance/>
³ CDC FluView Weekly Influenza Surveillance Report available at <http://www.cdc.gov/flu/weekly/> *Only a subset of influenza B had lineage testing performed.

Figure 3. Influenza Hospitalizations by Week of Admission, Dallas County: 2014–2020 Seasons

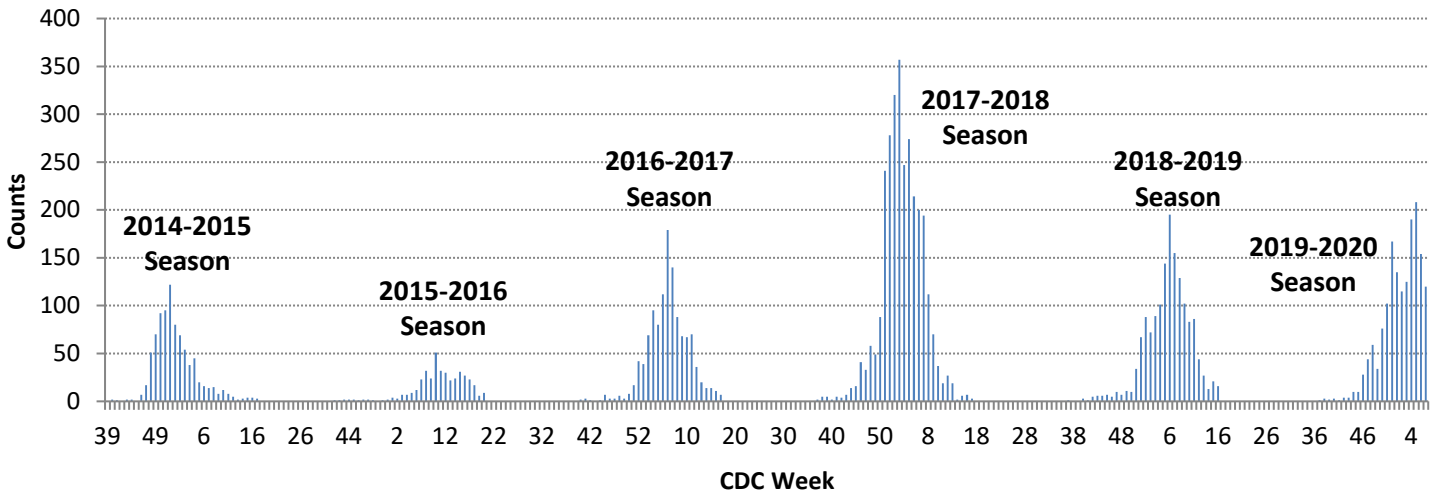


Figure 4. Intensive Care Unit Hospitalizations for influenza by Week of Admission, Dallas County: 2014–2020 Seasons

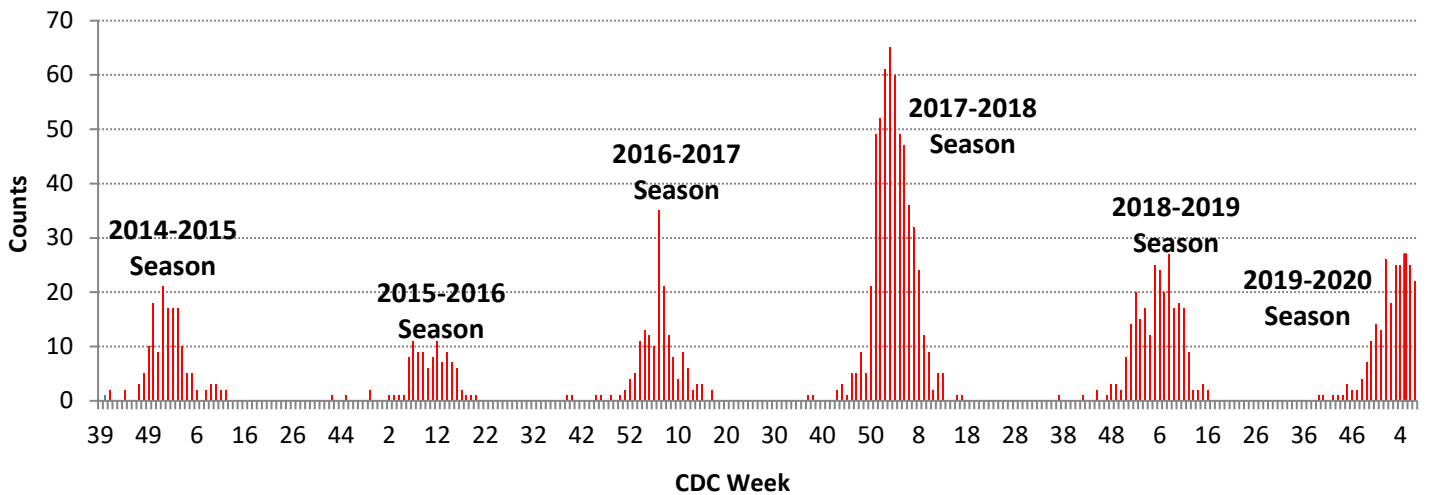
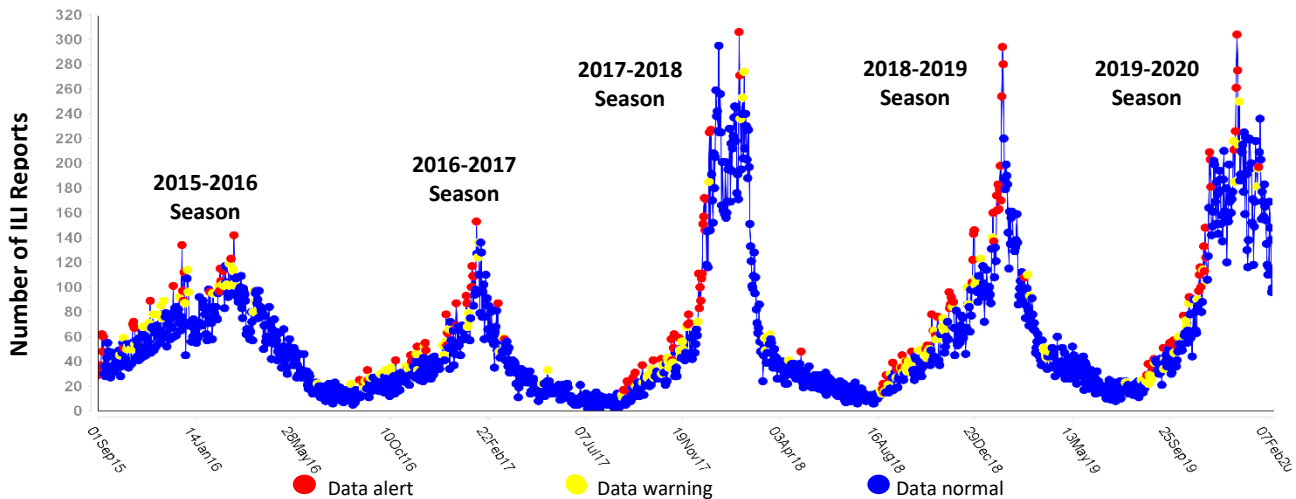


Figure 5. Syndromic Surveillance of Emergency Department Visits for Influenza-like Illness (ILI), Dallas County: September 01, 2015 – February 15, 2020



Data source: 18 emergency departments in Dallas County hospitals participating in the Electronic Surveillance System for the Early Notification of Community-based Epidemics (ESSENCE) voluntarily reporting the numbers of persons presenting with self-reported chief complaints of ILI.

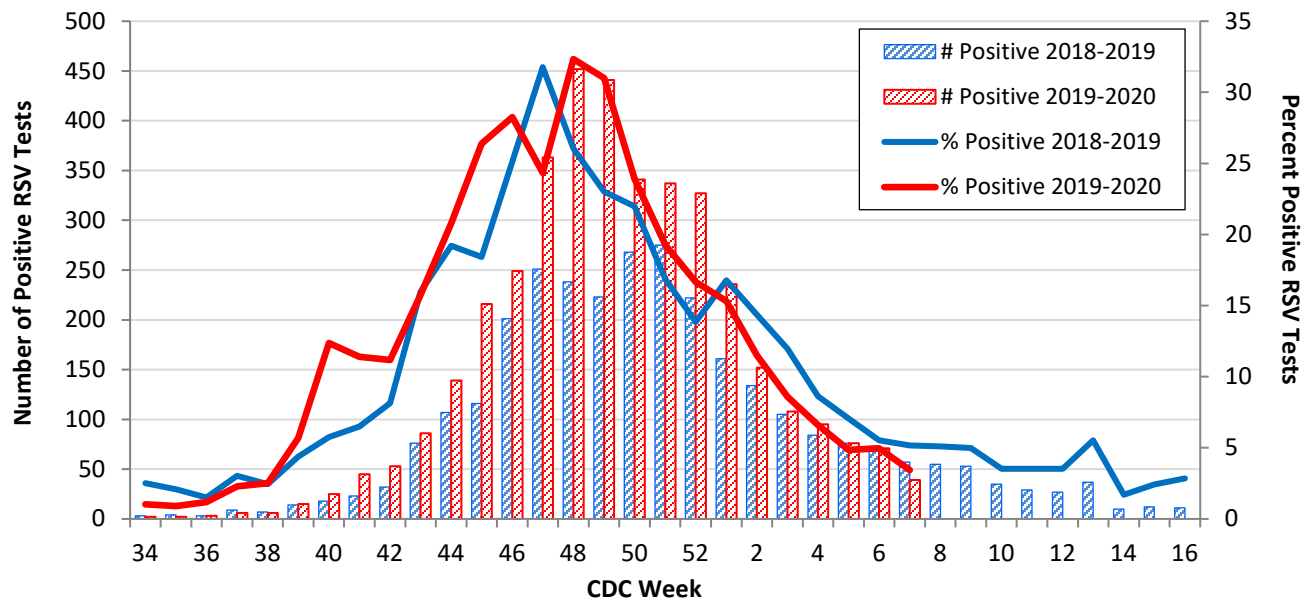
Table 5. Non-Influenza Respiratory Virus Testing by North Texas Laboratories Reported to NREVSS, Week 07

Virus	Number of Laboratories Reporting*	Tests Performed	Total Positive Tests	Percentage of Tests Positive
Adenovirus (respiratory)	3	259	7	2.7
HMPV	3	259	12	4.6
Parainfluenza virus	3	259	3	1.7
Rhinovirus/Enterovirus	3	259	82	31.7
RSV	3	1,138	39	3.4

Data source: National Respiratory and Enteric Virus Surveillance System (NREVSS) and hospitals reporting directly to DCHHS

*Data from 1 reporting laboratory was unavailable as of February 21, 2020

Figure 6. Number and Percent Positive RSV Rapid Antigen and PCR Tests by Week, NREVSS Surveillance Data, North Texas: August 18, 2017 – February 15, 2020



Data source: National Respiratory and Enteric Virus Surveillance System (NREVSS) and hospitals reporting directly to DCHHS

Table 6. Number and Percent Positive RSV Rapid Antigen and PCR Tests by Week, NREVSS Surveillance Data, North Texas: August 18, 2019 – February 15, 2020

Week Ending	12/28	01/04	01/11	01/18	01/25	02/01	02/15	8/18/18–Present
CDC Week	1	2	3	4	5	6*	7*	
RSV tests performed weekly	1,541	1,319	1,400	1,437	1,568	1,429	1,138	24,581
Total positive RSV tests	236	152	113	95	76	71	39	3,890
Percent positive RSV tests	15.3	11.5	8.1	6.6	4.9	5.0	3.4	

*Indicates preliminary results which are subject to change as adjustments are made for late-arriving data

Data source: National Respiratory and Enteric Virus Surveillance System (NREVSS)

Figure 7. Percentage of Student Absences by Week, Dallas County: 2018–2019 and 2019–2020

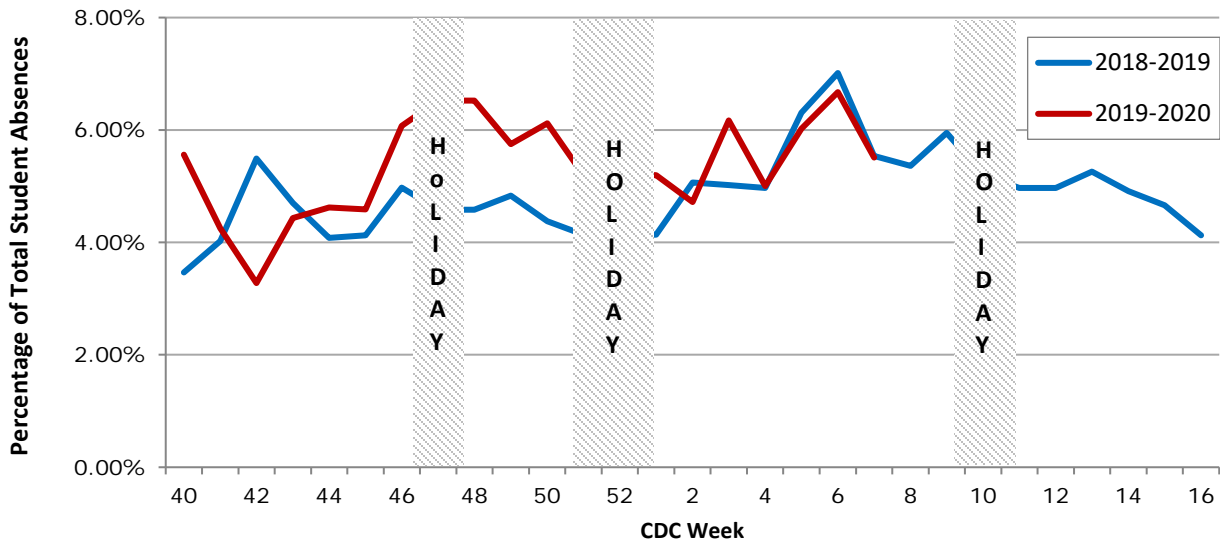
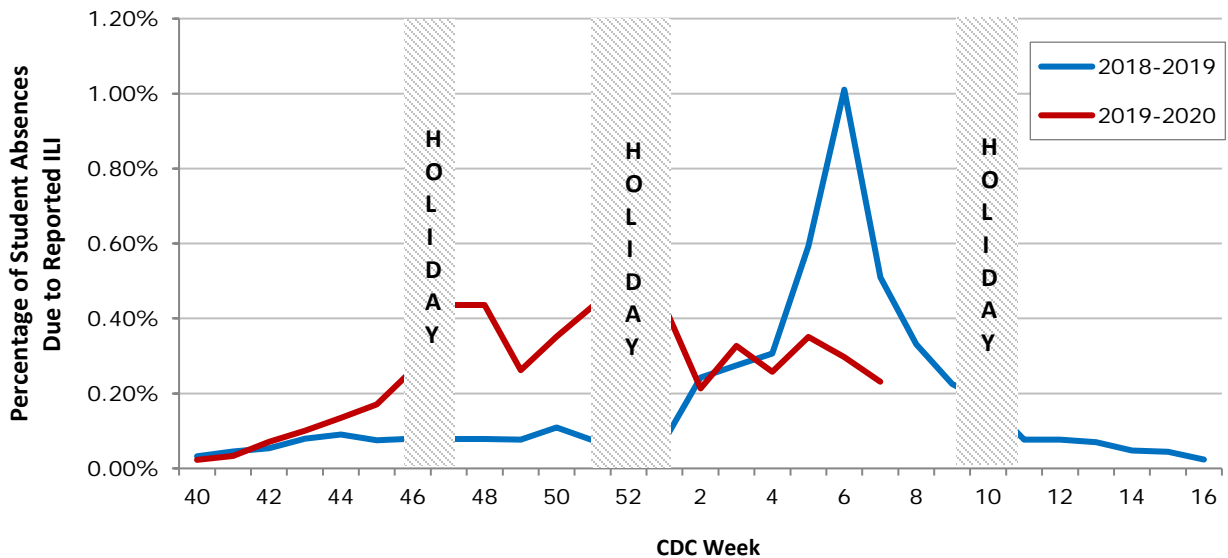


Figure 8. Percentage of Student Absences Due to ILI by Week, Dallas County: 2018–2019 and 2019–2020



Please report any of the following patients to DCHHS within 1 working day:

- **Hospitalized patients with influenza** (any subtype). Confirmation can be by any laboratory test, rapid antigen, culture, PCR, DFA/IFA, or performed in an outpatient or inpatient laboratory.
- **Deaths of persons with confirmed influenza** (any subtype). We are requesting all pediatric influenza-associated deaths to be reported *immediately* to facilitate specimen procurement and testing.
- Suspected influenza infections involving institutional outbreaks or a resident of any **Long Term Care facility** (please report *immediately*).

Phone: (214) 819-2004

Email: influenza@dallascounty.org