

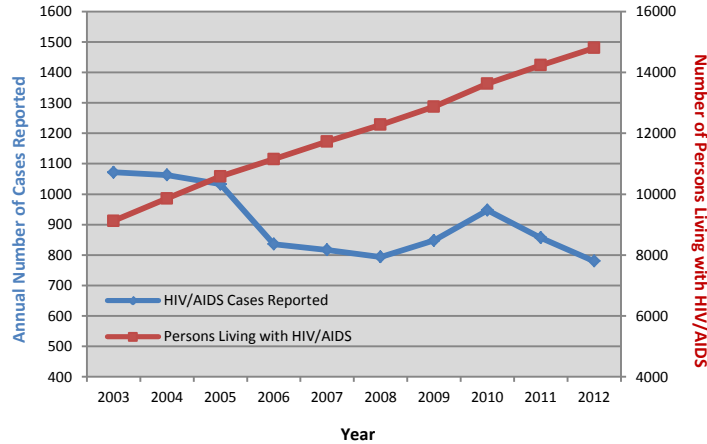


Profile of HIV in Dallas County, 2012

Dallas County Health and Human Services, 2377 N Stemmons Fwy, Dallas, Texas 75207

New HIV/AIDS Diagnoses and Persons Living With HIV/AIDS, 2012				
	New HIV/AIDS Diagnoses		Persons Living with HIV/AIDS	
	Number	Rate per 100,000	Number	Rate per 100,000
County	780	31.4	14,802	595.7
Sex				
Male	639	50.3	11,986	943.3
Female	141	11.6	2,816	231.9
Race/Ethnicity				
Black	377	75.3	6,108	1220.8
White	184	25.3	4,901	674.4
Hispanic	194	17.6	3,213	292.1
Other	10	6.3	158	99.9
Age Group				
0-1	1	1.2	3	3.6
2-12	0	0	21	4.8
13-24	195	50.3	784	202.1
25-34	233	59.0	2,703	684.1
35-44	190	42.6	3,998	896.5
45-54	107	34.9	4,858	1582.9
55+	54	12.6	2,435	567.9
Mode of Transmission				
	Number	Percent	Number	Percent
Men Who Have Sex With Men (MSM)	579	74.1%	10,093	68.2%
Heterosexual	153	19.6%	2,838	7.5%
Injection Drug Use (IDU)	34	4.3%	1,115	4.4%
MSM/IDU	13	1.7%	650	19.2%
Pediatric	1	0.1%	93	0.6%
Other/Unknown	0	0%	13	0.1%

New HIV/AIDS Cases and Cumulative Numbers of Persons Living with HIV/AIDS in Dallas County, 2003-2012



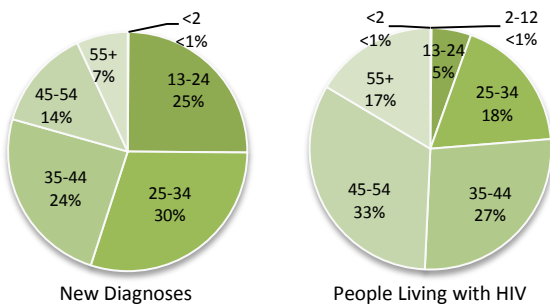
Synopsis of HIV/AIDS Trends in Dallas County, 2003 – 2012

- The number of new persons diagnosed with HIV in 2012 has decreased by 27% since 2003.
- In 2012, it was estimated that about 15,000 people were living with HIV/AIDS in Dallas County, representing an increase of 62% over the past 10 years.
- From 2008 through 2011, 33.8% of all newly diagnosed persons in Dallas County progressed to a concurrent AIDS diagnosis within 12 months of initial HIV diagnosis.
- Case rates remain disproportionately higher in African Americans, similar to trends observed in larger urban areas in the US.
- In 2012, 55% of new HIV diagnoses were in persons less than 35 years of age.

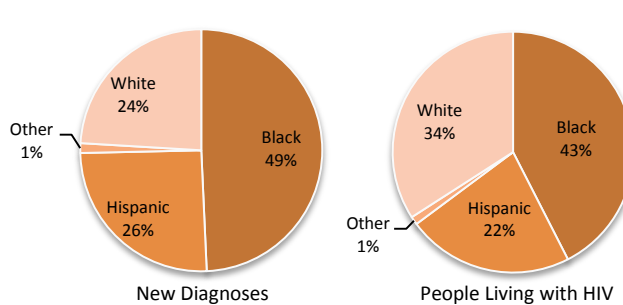
Data sources: Dallas County Health and Human Services and Texas Department of State Health Services, August 2013

- Data for new HIV/AIDS diagnoses for this report were calculated based on the earliest available diagnosis date for HIV infection. The data represent these new cases by year of initial diagnosis, and have been adjusted for reporting delay. Data is subject to updates and adjustments as needed.
- Numbers of Persons Living with HIV/AIDS (PLWHA) are based on most recent known address as of 2012, which include some of out of state diagnosed cases that have since moved to Texas, and exclude people that have recently moved out of state. Numbers have been adjusted for deaths with existing registry information, but is subject to change.

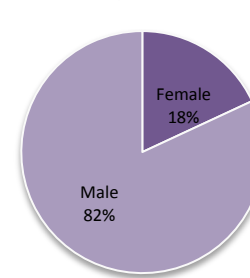
HIV in Dallas County by Age Groups



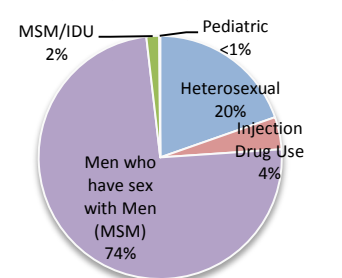
HIV in Dallas County by Race/Ethnicity



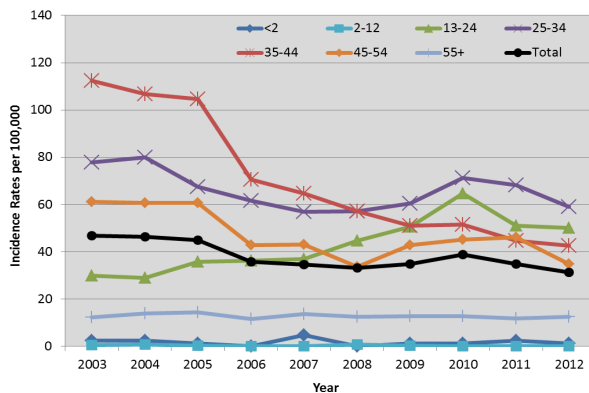
New HIV Diagnoses by Gender



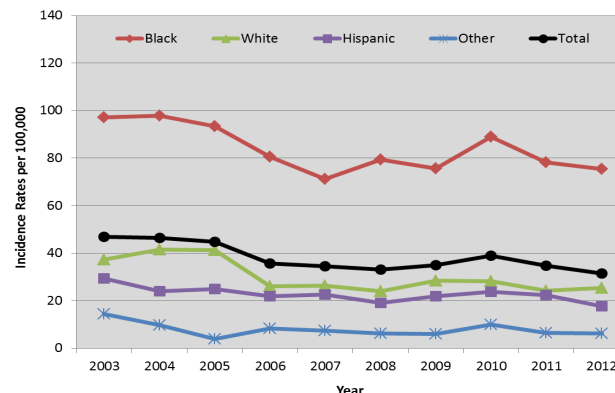
New HIV Diagnoses by Exposure Modes



HIV/AIDS Incidence Rates by Age Groups, 2003-2012



HIV/AIDS Incidence Rates by Race/Ethnicity, 2003-2012



Persons Living with HIV/AIDS Prevalence Rates by Race/Ethnicity, 2003-2012

