



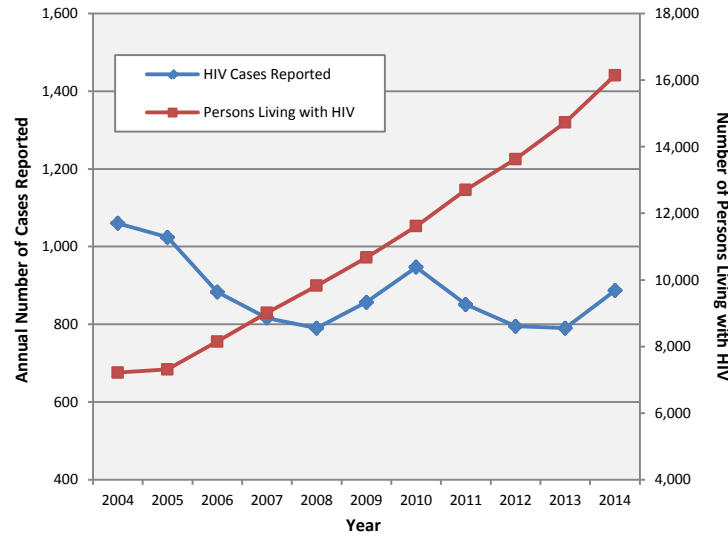
Profile of HIV in Dallas County, 2014

Dallas County Health and Human Services

New HIV Diagnoses and Persons Living with HIV, 2014

| | New HIV Diagnoses | | Persons Living with HIV | |
|---------------------------------|-------------------|------------------|-------------------------|------------------|
| | n | Rate per 100,000 | n | Rate per 100,000 |
| Total | 887 | 35.9 | 16,146 | 653.7 |
| Sex | | | | |
| Male | 715 | 58.3 | 13,037 | 1,062.2 |
| Female | 172 | 13.8 | 3,109 | 250.2 |
| Race/Ethnicity | | | | |
| Black | 407 | 74.2 | 6,803 | 1,240.3 |
| White | 196 | 27.2 | 4,934 | 684.3 |
| Hispanic | 241 | 23.7 | 3,682 | 361.9 |
| Other | 25 | 13.7 | 173 | 94.6 |
| Age Group | | | | |
| 0-1 | 0 | 0.0 | 0 | 0.0 |
| 2-12 | 2 | 0.5 | 17 | 4.1 |
| 13-24 | 206 | 50.3 | 758 | 185.0 |
| 25-34 | 306 | 73.8 | 3,124 | 753.3 |
| 35-44 | 185 | 52.9 | 4,038 | 1,155.6 |
| 45-54 | 130 | 41.4 | 5,120 | 1,629.1 |
| ≥55 | 58 | 12.0 | 3,089 | 638.6 |
| Mode of Transmission | n | % | n | % |
| Men Who Have Sex with Men (MSM) | 652 | 73.5 | 11,060 | 68.6 |
| Heterosexual | 182 | 20.5 | 3,169 | 19.6 |
| Injection Drug Use (IDU) | 30 | 3.4 | 1,132 | 7.0 |
| MSM/IDU | 21 | 2.4 | 678 | 4.2 |
| Pediatric | 2 | 0.2 | 94 | 0.6 |

New HIV Cases and Cumulative Numbers of Persons Living with HIV in Dallas County, 2004-2014



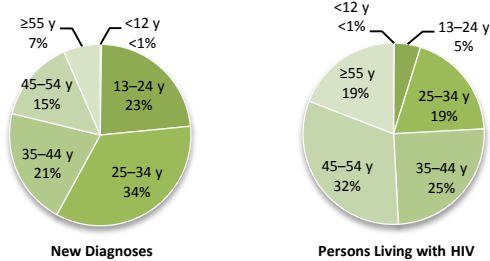
Synopsis of HIV Trends in Dallas County, 2004-2014

- The number of new persons diagnosed with HIV in 2014 has decreased by 16% since 2004.
- In 2014, an estimated 16,146 persons were living with HIV in Dallas County, representing an increase of 124% since 2004.
- From 2010 through 2013, 32% of all newly diagnosed persons in Dallas County progressed to a concurrent AIDS diagnosis within 12 months of initial HIV diagnosis.
- Case rates remain disproportionately higher in African Americans, similar to trends observed in larger urban areas in the US.
- In 2014, 58% of new HIV diagnoses were in persons less than 35 years of age.

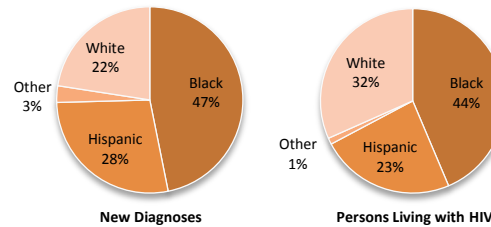
Data Sources: Texas Department of State Health Services HIV/STD Surveillance Branch and Texas Department of State Health Services Center for Health Statistics November 2015

- Data for new HIV/AIDS diagnoses for this report were calculated based on the earliest available diagnosis date for HIV infection. The data represent these new cases by year of initial diagnosis, and have been adjusted for reporting delay. Data is subject to updates and adjustments as needed.
- Numbers of Persons Living with HIV/AIDS (PLWHA) are based on most recent known address as of 2014, which include some of out of state diagnosed cases that have since moved to Texas, and exclude people that have recently moved out of state. Numbers have been adjusted for deaths with existing registry information, but is subject to change. Note: Sums of subgroups may not equal total because of unknown or unspecified classification categories.

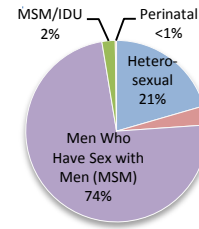
HIV in Dallas County by Age Groups



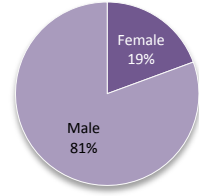
HIV in Dallas County by Race/Ethnicity



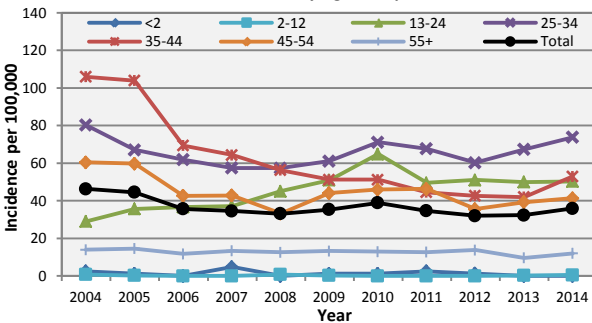
New HIV Diagnoses by Exposure



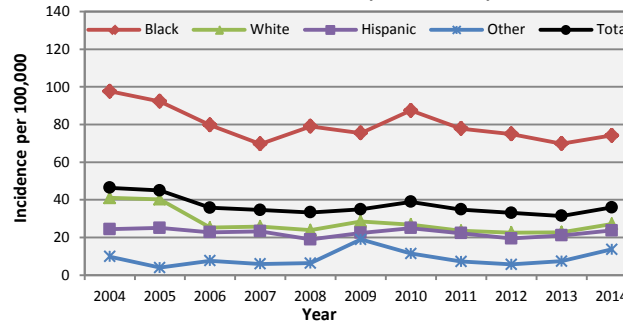
New HIV Diagnoses by Gender



HIV Incidence Rates by Age Groups, 2004-2014



HIV/AIDS Incidence Rates by Race/Ethnicity, 2004-2014



Persons Living with HIV/AIDS Prevalence Rates by Race/Ethnicity, 2004-2014

