



2016 Profile of HIV in Dallas County

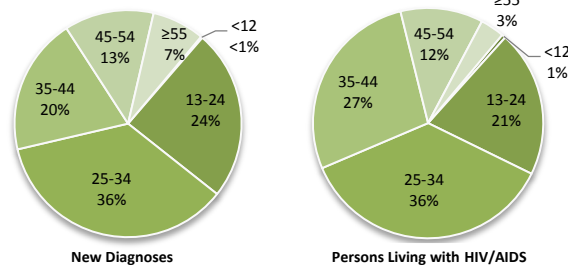
Dallas County Health and Human Services

New HIV Diagnoses and Persons Living with HIV, 2016

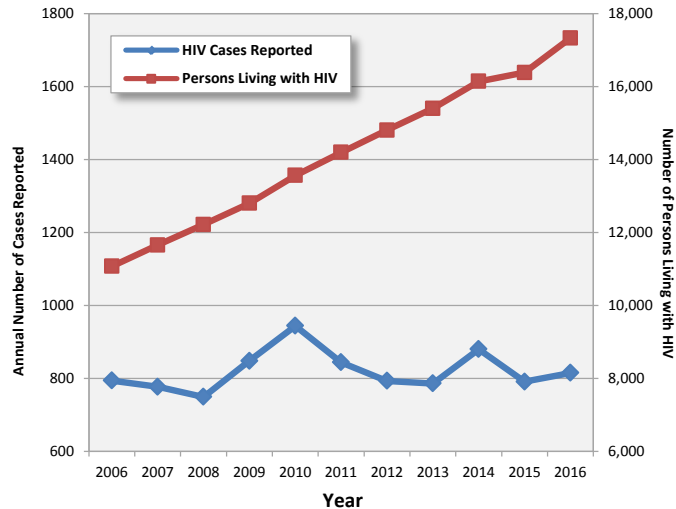
	New HIV Diagnoses		Persons Living with HIV	
	n	Incidence per 100,000	n	Prevalence per 100,000
Total	815	31.7	17,333	673.1
Sex				
Male	700	55.2	14,053	1,108.8
Female	115	8.8	3,280	250.8
Race/Ethnicity				
Black	364	61.7	7,417	1,256.4
White	159	20.2	4,966	632.4
Hispanic	257	25.0	4,099	399.4
Other	15	8.7	204	117.8
Age Group (years)				
0-1	2	2.5	3	3.7
2-12	0	N/A	12	2.8
13-24	198	45.9	766	177.5
25-34	291	69.9	3,404	818.2
35-44	159	44.7	4,124	1,158.1
45-54	104	31.6	5,129	1,560.1
≥55	61	11.3	3,895	724.5
Mode of Transmission	n	%	n	%
Men Who Have Sex with Men (MSM)	618	75.8%	11,999	69.3%
Heterosexual	132	16.2%	3,378	19.5%
Injection Drug Use (IDU)	42	5.1%	1,148	6.6%
MSM/IDU	21	2.6%	701	4.0%
Pediatric	2	0.3%	97	0.6%

N/A = Not applicable

HIV in Dallas County by Age Group



New HIV Cases and Cumulative Numbers of Persons Living with HIV in Dallas County, 2006-2016



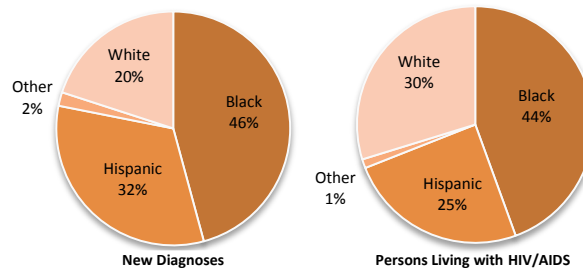
Synopsis of HIV Trends in Dallas County, 2006-2016

- In 2016, an estimated 17,333 people were living with HIV in Dallas County, representing an increase of 57% since 2006.
- From 2012 through 2015, 28% of all newly diagnosed persons in Dallas County progressed to a concurrent AIDS diagnosis within 12 months of initial HIV diagnosis.
- Case rates remain disproportionately higher in African Americans, similar to trends observed in larger urban areas in the US.
- In 2016, 60% of new HIV diagnoses were in persons less than 35 years of age.

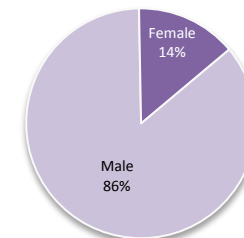
Data Sources: Dallas County Health & Human Services; Texas Department of State Health Services, 2017

- Data for new HIV/AIDS diagnoses for this report were calculated based on the earliest available diagnosis date for HIV infection. The data represent these new cases by year of initial diagnosis, and have been adjusted for reporting delay. Data is subject to updates and adjustments as needed.
- Numbers of Persons Living with HIV/AIDS (PLWHA) are based on most recent known address as of 2016, which include some of out of state diagnosed cases that have since moved to Texas, and exclude people that have recently moved out of state. Numbers have been adjusted for deaths with existing registry information, but is subject to change.
- Sums of subgroups may not equal total because of unknown/unspecified classification.

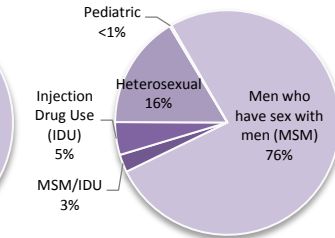
HIV in Dallas County by Race/Ethnicity



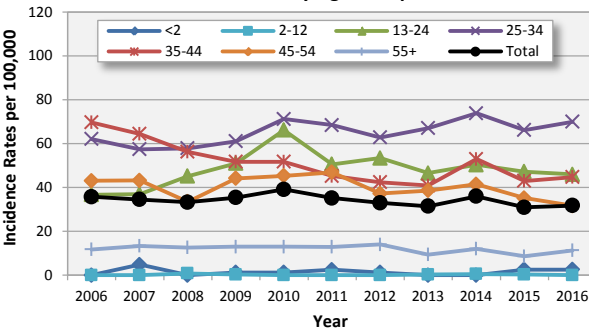
New HIV Diagnoses by Gender



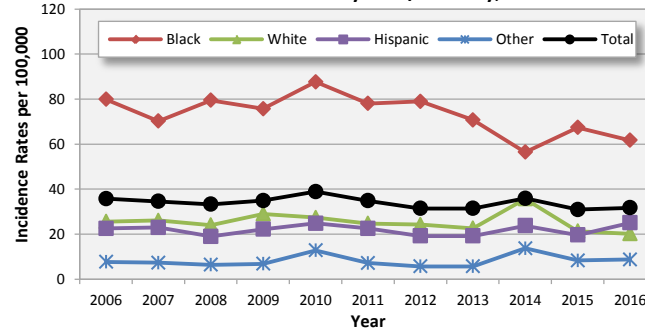
New HIV Diagnoses by Exposure



HIV Incidence Rates by Age Groups, 2006-2016



HIV Incidence Rates by Race/Ethnicity, 2006-2016



Persons Living with HIV/AIDS Prevalence Rates by Race/Ethnicity, 2006-2016

