



2017 Profile of HIV in Dallas County

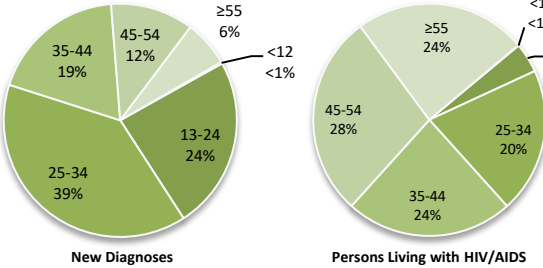
Dallas County Health and Human Services

New HIV Diagnoses and Persons Living with HIV, 2017

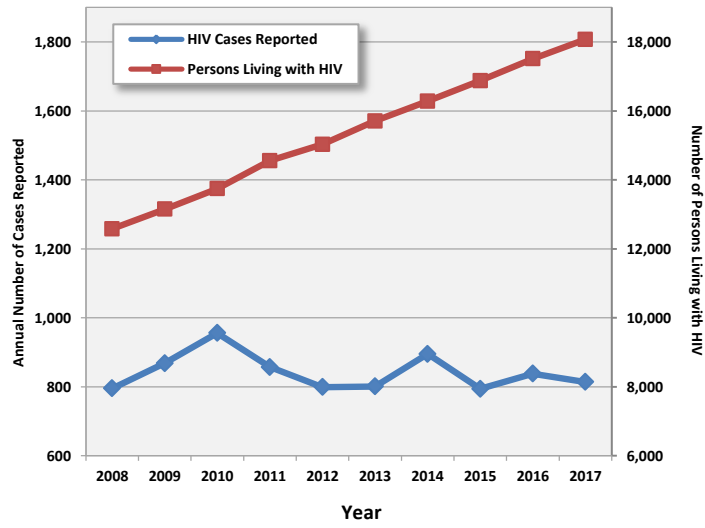
	New HIV Diagnoses		Persons Living with HIV	
	n	Incidence per 100,000	n	Prevalence per 100,000
Total	814	31.6	18,073	701.9
Sex				
Male	679	53.6	14,656	1,156.4
Female	135	10.3	3,417	261.3
Race/Ethnicity				
Black	391	66.2	7,772	1,316.5
White	142	18.1	5,020	639.3
Hispanic	255	24.8	4,363	425.1
Other	26	15.0	918	530.3
Age Group (years)				
0-1	2	2.5	3	3.7
2-12	0	N/A	12	2.8
13-24	195	45.2	748	173.3
25-34	318	76.4	3,656	878.8
35-44	153	43.0	4,220	1,185.1
45-54	94	28.6	5,095	1,549.8
≥55	52	9.7	4,339	807.0
Mode of Transmission	n	%	n	%
Men Who Have Sex with Men (MSM)	603	74.1%	12,514	69.3%
Heterosexual	148	18.2%	3,522	19.5%
Injection Drug Use (IDU)	40	4.9%	1,188	6.6%
MSM/IDU	21	2.6%	737	4.1%
Pediatric	2	0.2%	101	0.6%

N/A = Not applicable

HIV in Dallas County by Age Group



New HIV Cases and Cumulative Numbers of Persons Living with HIV in Dallas County, 2008-2017



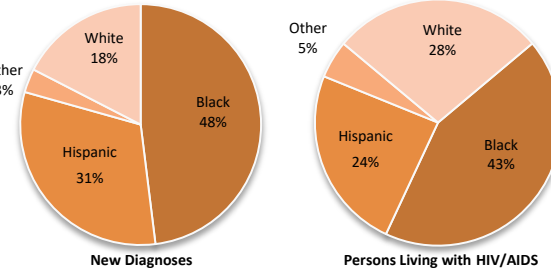
Synopsis of HIV Trends in Dallas County, 2008-2017

- In 2017, an estimated 18,073 people were living with HIV in Dallas County, representing an increase of 44% since 2008.
- From 2013 through 2016, 27% of all newly diagnosed persons in Dallas County progressed to a concurrent AIDS diagnosis within 12 months of initial HIV diagnosis.
- Case rates remain disproportionately higher in African Americans, similar to trends observed in larger urban areas in the US.
- In 2017, 63% of new HIV diagnoses were in persons less than 35 years of age.

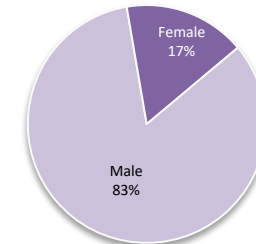
Data Sources: Dallas County Health & Human Services; Texas Department of State Health Services, 2018

- Data for new HIV/AIDS diagnoses for this report were calculated based on the earliest available diagnosis date for HIV infection. The data represent these new cases by year of initial diagnosis, and have been adjusted for reporting delay. Data is subject to updates and adjustments as needed.
- Numbers of Persons Living with HIV/AIDS (PLWHA) are based on most recent known address as of 2017, which include some of out of state diagnosed cases that have since moved to Texas, and exclude people that have recently moved out of state. Numbers have been adjusted for deaths with existing registry information, but is subject to change.
- Sums of subgroups may not equal total because of unknown/unspecified classification.

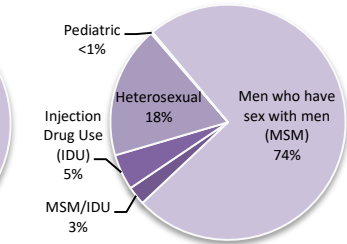
HIV in Dallas County by Race/Ethnicity



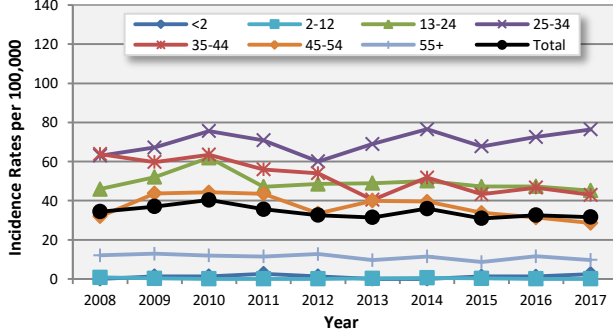
New HIV Diagnoses by Gender



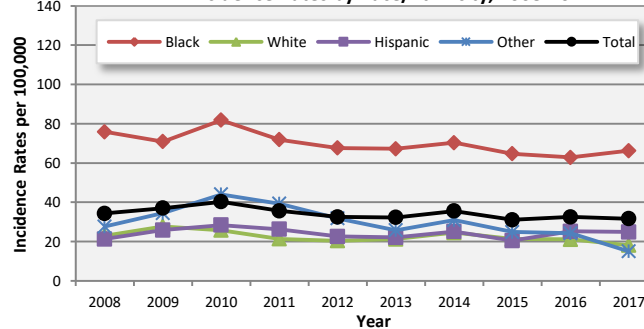
New HIV Diagnoses by Exposure



HIV Incidence Rates by Age Groups, 2008-2017



HIV Incidence Rates by Race/Ethnicity, 2008-2017



Persons Living with HIV/AIDS Prevalence Rates by Race/Ethnicity, 2008-2017

