

Zika Response Guidance Summary

**Webinar
2017**



Dallas County
Health and Human Services

Mosquito Season

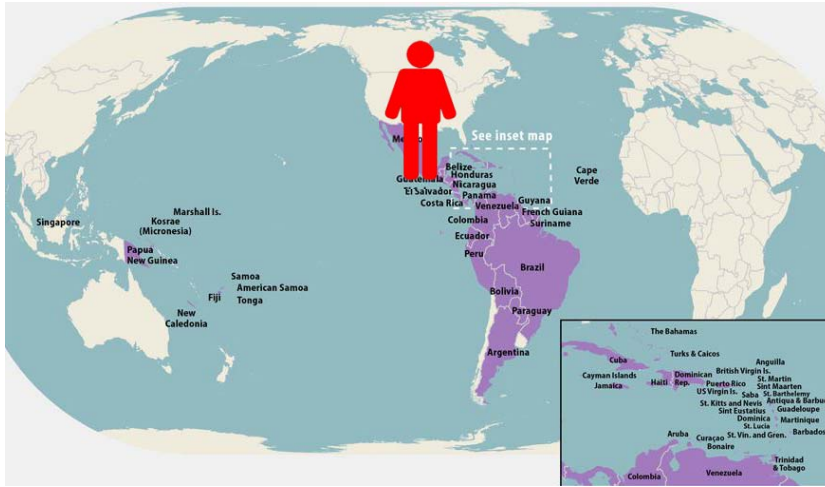
Phase 1: (Pre-incident)

Imported / Travel Cases

Probability of outbreak is moderate

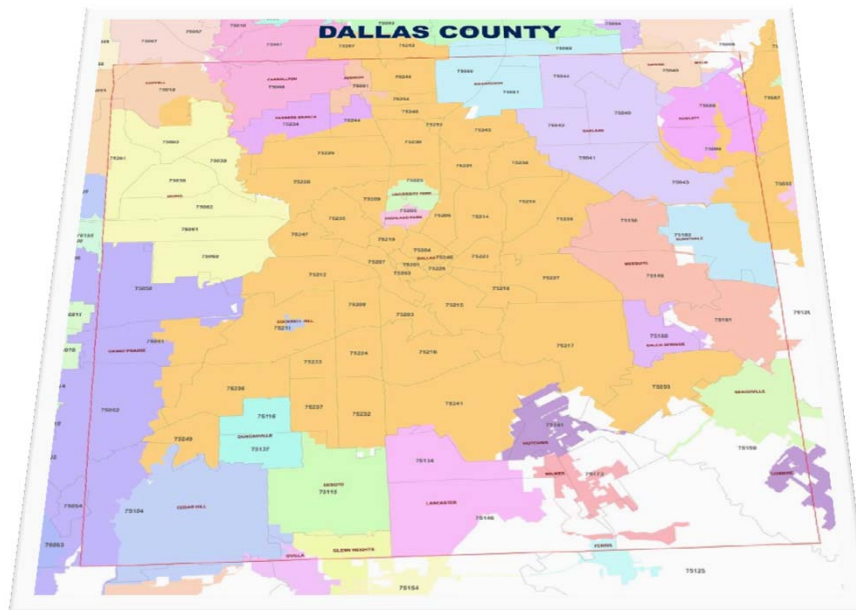
Aedes aegypti or *Aedes albopictus* mosquito biting activity.

Introduced travel-related, sexually, or other body fluid transmitted cases



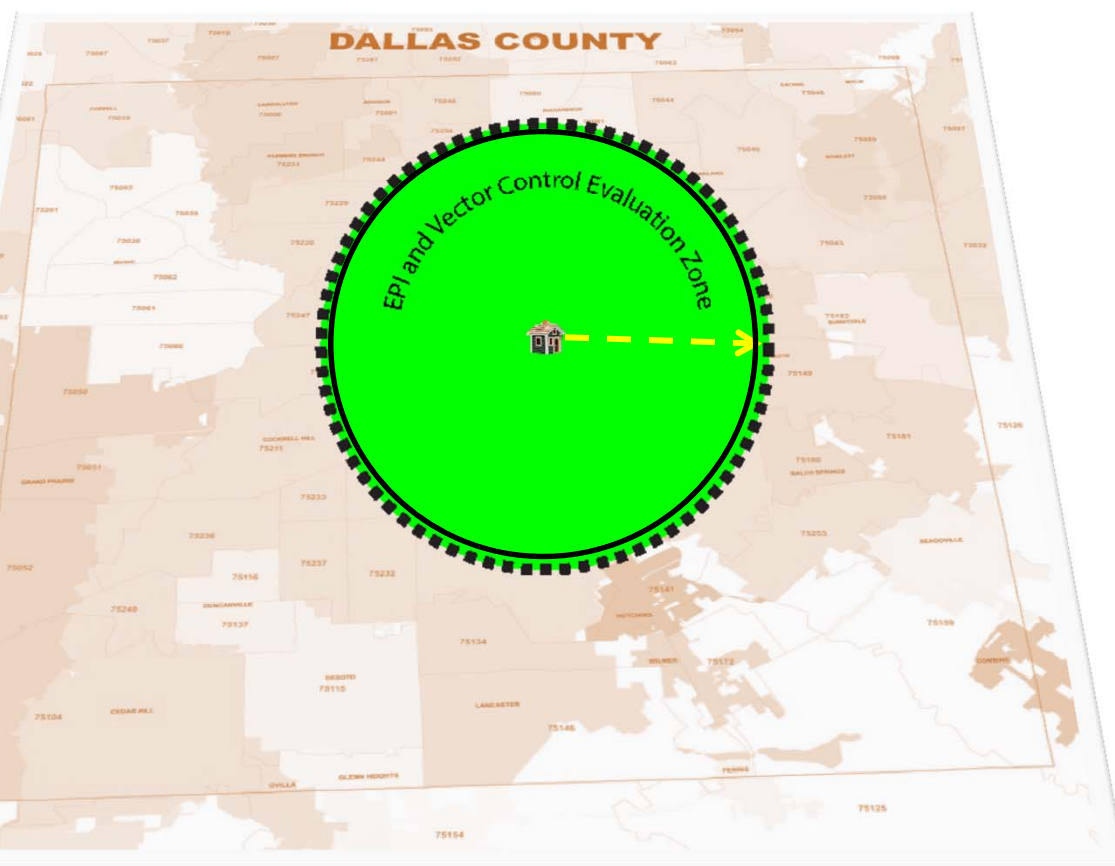
Mosquito Season

Imported / Travel Cases



Mosquito Season

Imported / Travel cases



Phase 1: (Pre-incident)

Surveillance

- Deploy BGS traps
- Initiate mosquito virus testing
- Epi. Investigation

Vector Control Measures

- Continue as Phase 0
 - Door to door mitigation
 - Localized treatments considered around case
 - Barrier treatment
 - Thermal fogger
- (Up to 500 feet or more based on circumstances)

Information/Education

- Public health advisory released
- Advise the public and emphasize source reduction, personal protection and disease symptoms
- Notify municipalities of scheduled treatments

Mosquito season

Phase 2: (Suspected / Confirmed Incident)

Local vector-borne transmission
case and/or virus

Probability of outbreak is high

Single, locally acquired case, or cases clustered in a single
household and occurring <2 weeks apart

Local vector-borne transmission case and/or virus

Single, locally acquired case, or cases clustered in a single household and occurring <2 weeks apart



Mosquito Season

Phase 2: (Suspected/Confirmed incident)

Surveillance

- Expand BGS trapping
- Mosquito virus testing
- Epi. Investigation

Vector Control Measures

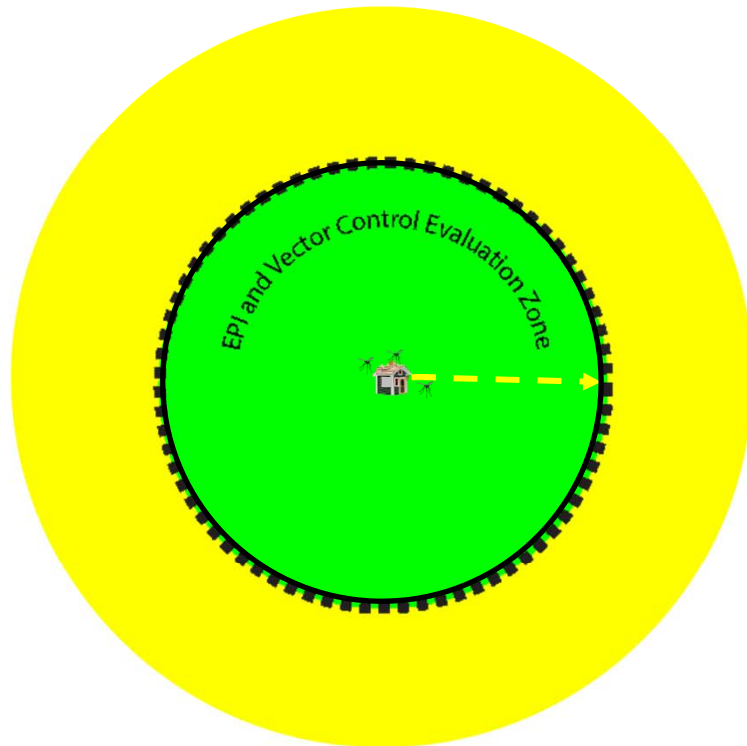
- Continue as Risk Level 1
 - Expand area and intensity of treatments
 - Contact vendor for possible aerial treatment
- (At least 500 feet or more based on circumstances)

Information/Education

- Public health alert released
- Warn the general public of the probability of disease and provide guidance

Local vector-borne transmission case and/or virus

Single, locally acquired case, or cases clustered in a single household and occurring <2 weeks apart



Mosquito Season

Phase 2: (Suspected/Confirmed incident)

Surveillance

- Expand BGS trapping
- Mosquito virus testing
- Epi. Investigation

Vector Control Measures

- Continue as Risk Level 1
 - Expand area and intensity of treatments
 - Contact vendor for possible aerial treatment
- (At least 500 feet or more based on circumstances)

Information/Education

- Public health alert released
- Warn the general public of the probability of disease and provide guidance

Mosquito season

Phase 3:
(Incident/Response)

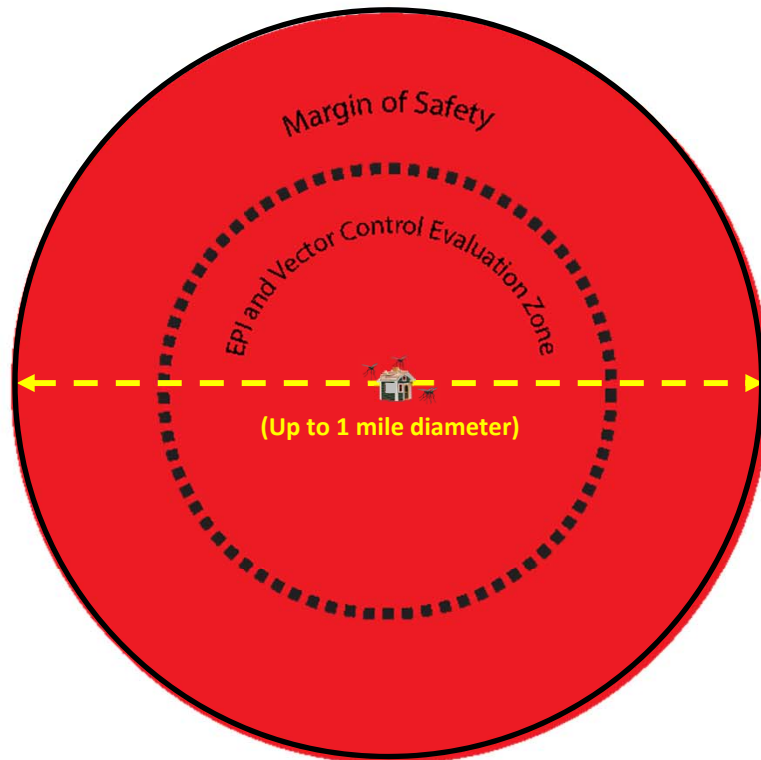
Multiple vector-borne cases

Human outbreak is confirmed

Zika virus illnesses with onsets occurring ≥ 2 weeks apart but
within an approximately 1 mile (1.5 km) diameter

Local vector-borne
transmission case
and/or virus

*Zika virus illnesses with onsets occurring ≥ 2 weeks apart but
within an approximately 1 mile (1.5 km) diameter*



Zika Active Transmission Area

Mosquito Season

Phase 3: (Incident / Response)

Surveillance

- Continued mosquito surveillance and testing
- Epi. investigation

Vector Control Measures

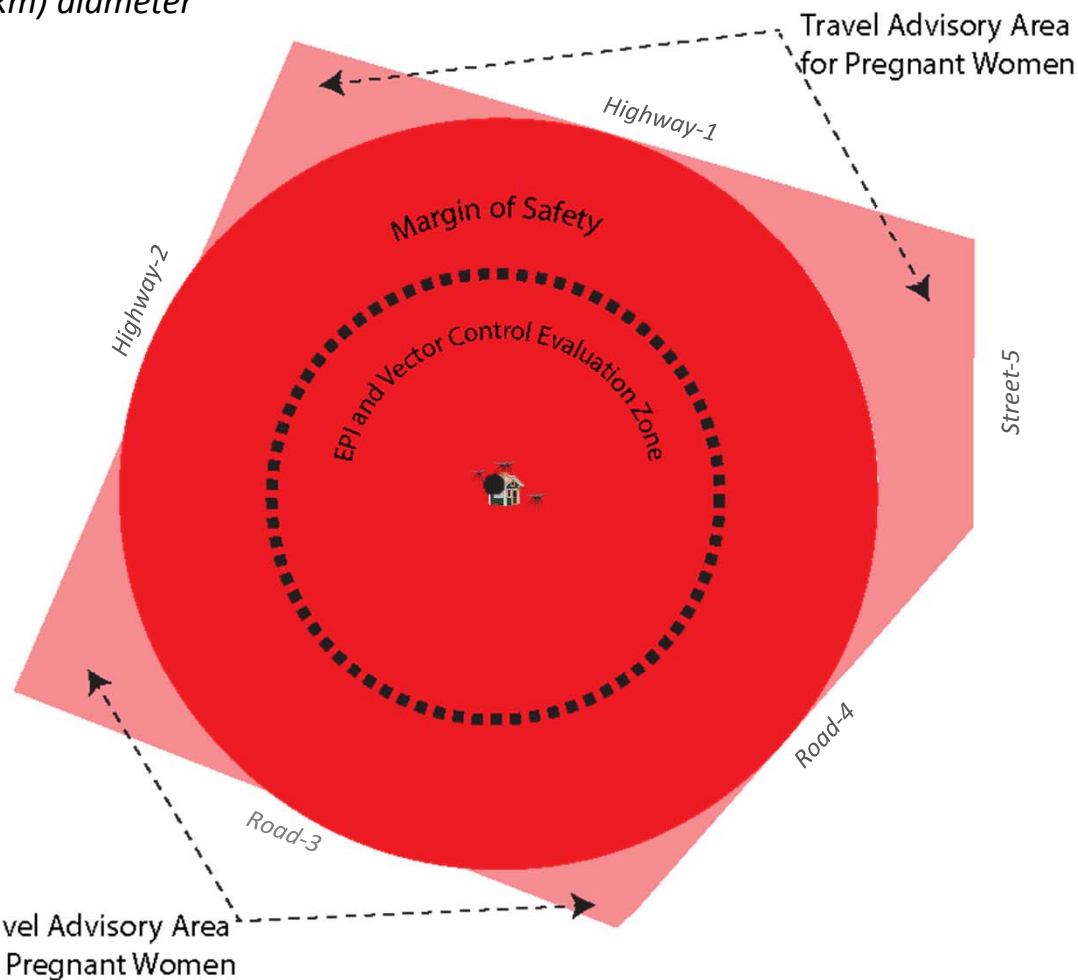
- Continue as Risk Level 2
- Recommend targeted aerial treatment*
(up to 1 mile diameter or more
based on circumstances)

Information/Education

- Public health emergency considered
- Distribution of emergency alerts

virus illnesses with onsets
occurring ≥ 2 weeks apart but
within an approximately 1 mile
(1.5 km) diameter

Local vector-borne transmission case and/or virus



Mosquito Season

Phase 3: (Incident / Response)

Surveillance

- Continued mosquito surveillance and testing
- Epi. investigation

Vector Control Measures

- Continue as Risk Level 2
- Recommend targeted aerial treatment*
(up to 1 mile diameter or more
based on circumstances)

Information/Education

- Public health emergency considered
- Distribution of emergency alerts

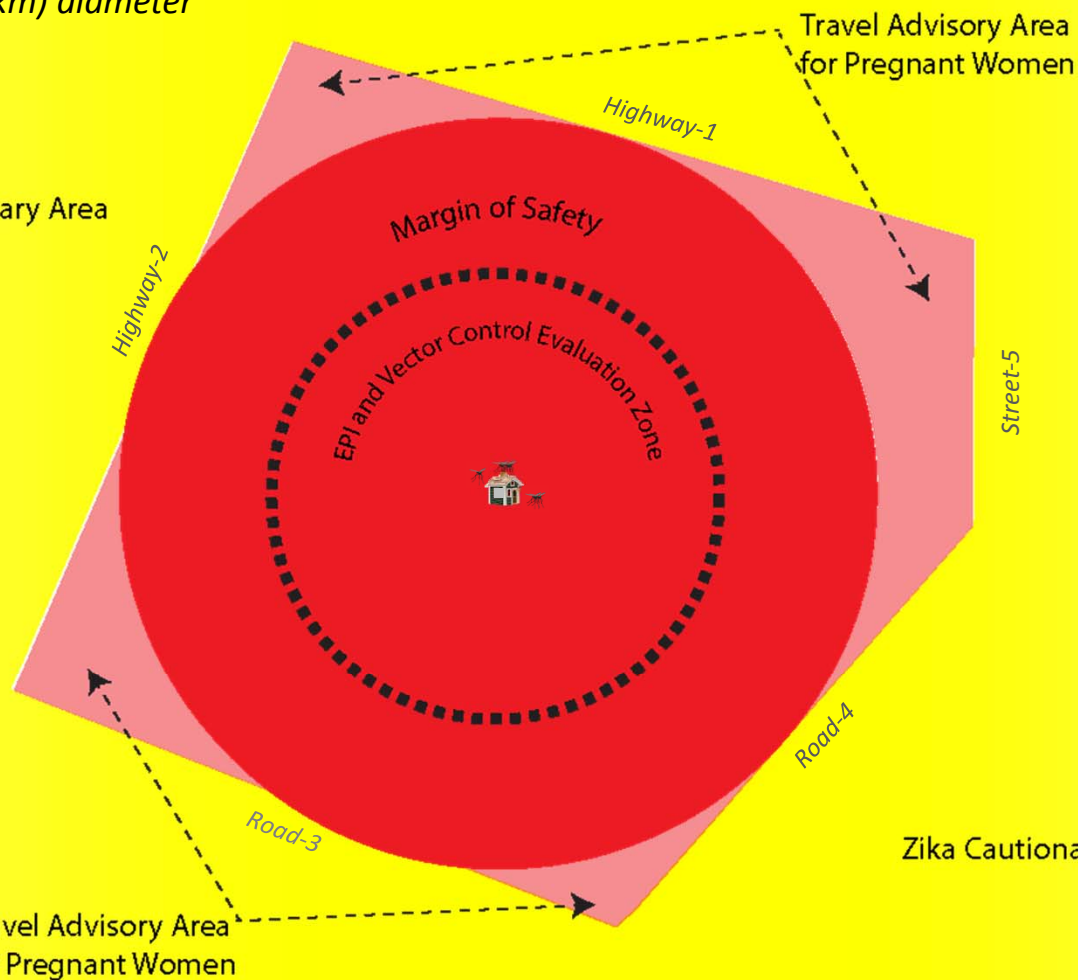
virus illnesses with onsets
occurring ≥ 2 weeks apart but
within an approximately 1 mile
(1.5 km) diameter

Local vector-borne
transmission case
and/or virus

Mosquito Season

Phase 3:
(Incident / Response)

Cautionary Area



Surveillance

- Continued mosquito surveillance and testing
- Epi. investigation

Vector Control Measures

- Continue as Risk Level 2
- Recommend targeted aerial treatment*
(up to 1 mile diameter or more
based on circumstances)

Information/Education

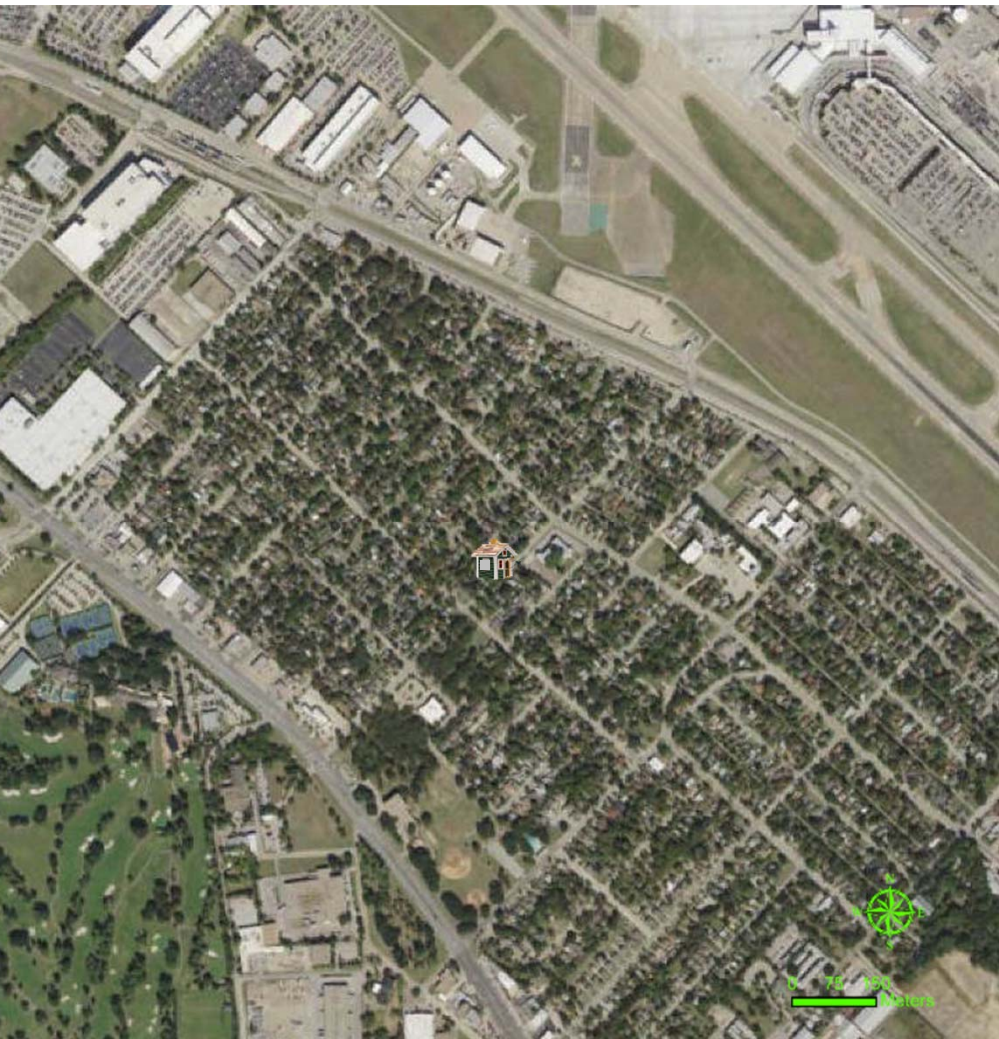
- Public health emergency considered
- Distribution of emergency alerts

Enhanced Outreach Area Examples



Local vector-borne transmission case and/or virus

Single, locally acquired case, or cases clustered in a single household and occurring <2 weeks apart



Mosquito Season

Phase 2: (Suspected/Confirmed incident)

Surveillance

- Expand BGS trapping
- Mosquito virus testing
- Epi. Investigation

Vector Control Measures

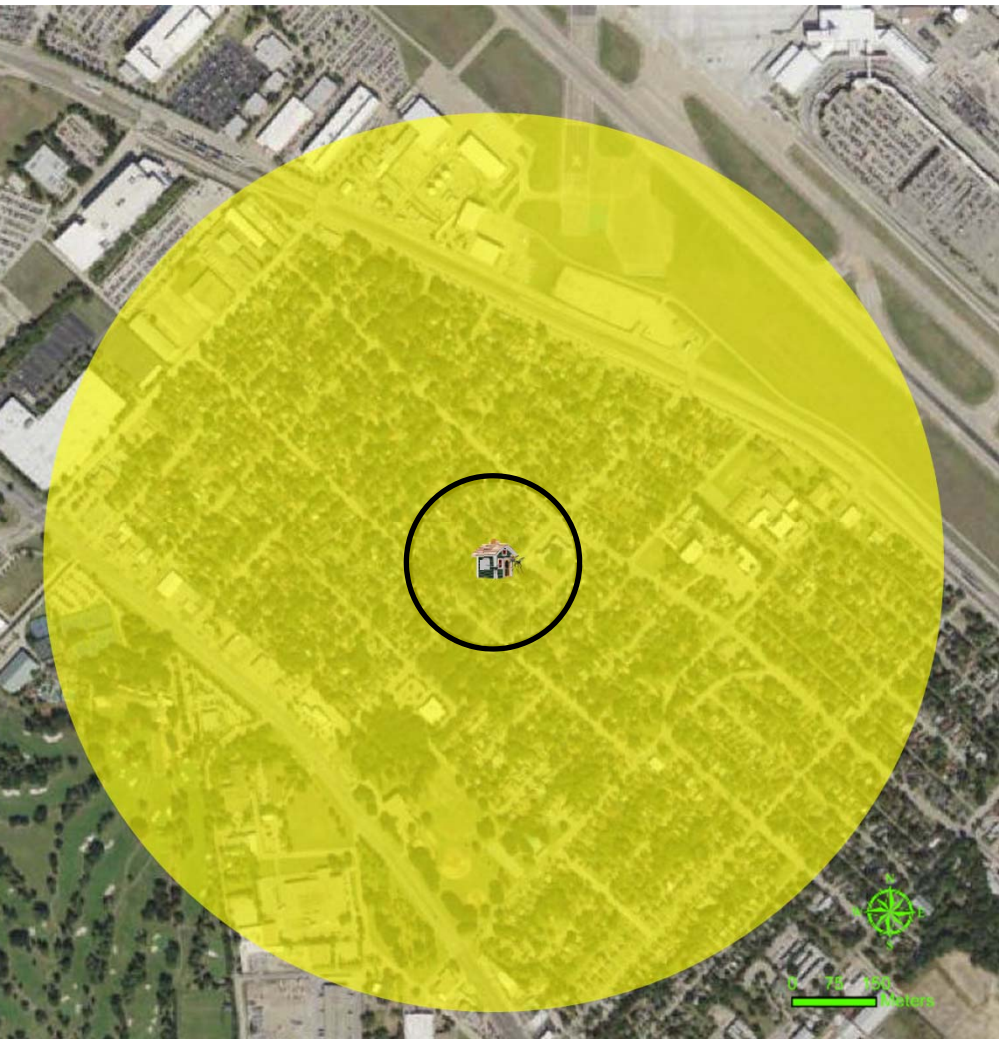
- Continue as Risk Level 1
 - Expand area and intensity of treatments
 - Contact vendor for possible aerial treatment
- (At least 500 feet or more based on circumstances)

Information/Education

- Public health alert released
- Warn the general public of the probability of disease and provide guidance

Local vector-borne transmission case and/or virus

Single, locally acquired case, or cases clustered in a single household and occurring <2 weeks apart



Mosquito Season

Phase 2: (Suspected/Confirmed incident)

Surveillance

- Expand BGS trapping
- Mosquito virus testing
- Epi. Investigation

Vector Control Measures

- Continue as Risk Level 1
 - Expand area and intensity of treatments
 - Contact vendor for possible aerial treatment
- (At least 500 feet or more based on circumstances)

Information/Education

- Public health alert released
- Warn the general public of the probability of disease and provide guidance

Local vector-borne
transmission case
and/or virus

*Zika virus illnesses with onsets occurring ≥ 2 weeks apart but
within an approximately 1 mile (1.5 km) diameter*



Mosquito Season

Phase 3: (Incident / Response)

Surveillance

- Continued mosquito surveillance and testing
- Epi. investigation

Vector Control Measures

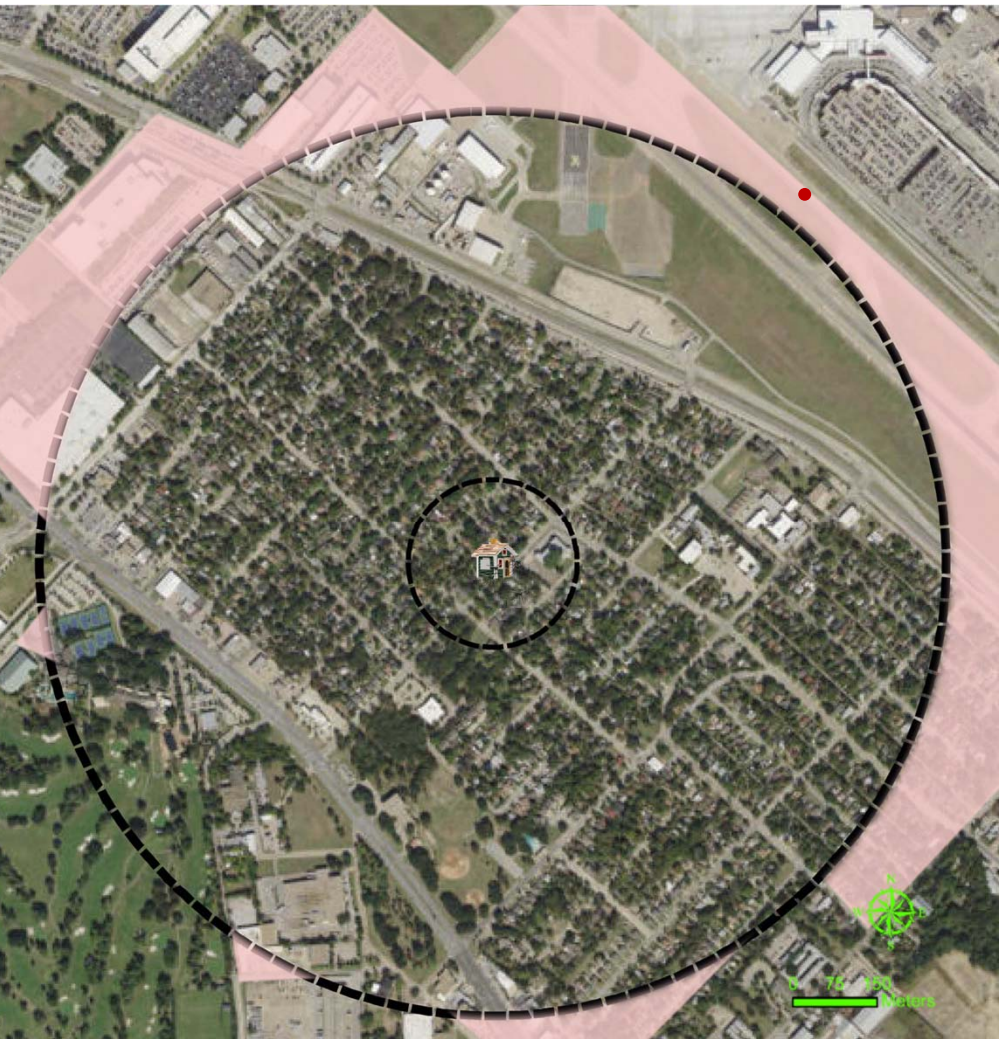
- Continue as Risk Level 2
- Recommend targeted aerial treatment*
(up to 1 mile diameter or more
based on circumstances)

Information/Education

- Public health emergency considered
- Distribution of emergency alerts

Local vector-borne
transmission case
and/or virus

*Zika virus illnesses with onsets occurring ≥ 2 weeks apart but
within an approximately 1 mile (1.5 km) diameter*



Mosquito Season

Phase 3: (Incident / Response)

Surveillance

- Continued mosquito surveillance and testing
- Epi. investigation

Vector Control Measures

- Continue as Risk Level 2
- Recommend targeted aerial treatment*
(up to 1 mile diameter or more
based on circumstances)

Information/Education

- Public health emergency considered
- Distribution of emergency alerts

Local vector-borne
transmission case
and/or virus

*Zika virus illnesses with onsets occurring ≥ 2 weeks apart but
within an approximately 1 mile (1.5 km) diameter*



Mosquito Season

Phase 3: (Incident / Response)

Surveillance

- Continued mosquito surveillance and testing
- Epi. investigation

Vector Control Measures

- Continue as Risk Level 2
- Recommend targeted aerial treatment*
(up to 1 mile diameter or more
based on circumstances)

Information/Education

- Public health emergency considered
- Distribution of emergency alerts

Zika Action Risk Levels

Stage	Phase level	Transmission Risk Category		
Pre-incident	0	Preparedness: Vector present in the county		
		Conditions: Probability of human outbreak is low (Year-round status in the absence of escalating triggers)		Trigger: Normal mosquito activity with no evidence of mosquito-borne viruses
		Surveillance	Information/Education	Vector Control Measures
		<ul style="list-style-type: none"> ➤ Routine monitoring of mosquito activity ➤ Case reporting to DCHHS 	<ul style="list-style-type: none"> ➤ Public education and community outreach programs focused on risk potential, personal protection and residential source reduction 	<ul style="list-style-type: none"> ➤ Source Reduction ➤ Biological – mosquito fish ➤ Larvicide
	1	Mosquito Season: <i>Aedes aegypti</i> or <i>Aedes albopictus</i> mosquito biting activity. Introduced travel-related, sexually, or other body fluid transmitted cases		
		Conditions: Probability of outbreak is moderate		Trigger: Imported / travel human case
		Surveillance	Information/Education	Vector Control Measures
		<ul style="list-style-type: none"> ➤ Deploy BGS traps ➤ Initiate mosquito virus testing 	<ul style="list-style-type: none"> ➤ Public health advisory released ➤ Advise the public and emphasize source reduction, personal protection and disease symptoms ➤ Notify municipalities of scheduled treatments 	<ul style="list-style-type: none"> ➤ Continue as Risk Level 0 ➤ Door to door mitigation ➤ Localized treatments considered around case <ul style="list-style-type: none"> - Barrier treatment - Thermal fogger (up to 500 feet or more)

Zika Action Risk Levels

Stage	Phase level	Transmission Risk Category		
Suspected/ Confirmed Incident	2	Confirmed Local Transmission: Single, locally acquired case, or cases clustered in a single household and occurring <2 weeks apart		
		Conditions: Probability of outbreak is high		Trigger: Local vector-borne transmission case and/or virus
		Surveillance	Information/Education	Vector Control Measures
		<ul style="list-style-type: none"> ➤ Expand BGS trapping ➤ Mosquito virus testing 	<ul style="list-style-type: none"> ➤ Public health alert released ➤ Warn the general public of the probability of disease and provide guidance 	<ul style="list-style-type: none"> ➤ Continue as Risk Level 1 ➤ Expand area and intensity of treatments ➤ Contact vendor for possible aerial treatment (At least 500 feet or more based on circumstances)
Incident/ Response	3	Confirmed Multiperson Local Transmission: Zika virus illnesses with onsets occurring ≥2 weeks apart but within an approximately 1 mile (1.5 km) diameter		
		Conditions: Human outbreak is confirmed		Trigger: Multiple vector-borne cases
		Surveillance	Information/Education	Vector Control Measures
		<ul style="list-style-type: none"> ➤ Continued mosquito surveillance and testing 	<ul style="list-style-type: none"> ➤ Public health emergency considered ➤ Distribution of emergency alerts 	<ul style="list-style-type: none"> ➤ Continue as Risk Level 2 ➤ Recommend targeted aerial treatment* (up to 1 mile diameter or more based on circumstances)
		<ul style="list-style-type: none"> ➤ Epi. investigation 		

References

- **Zika CDC Interim Response Plan – October 2016**
- **DCHHS Zika Virus Guide – June 2016**
- **Zika Action Risk Levels – Nov 2016**

A DCHHS Production



Dallas County Health and Human Services

2017