

Dallas County Trail and Preserve Program Board

February 1, 2024



The logo is a shield-shaped emblem. The top portion is a solid blue horizontal band. The bottom, larger portion is a solid red field. The text is white and centered within the shield.

DALLAS

**COUNTY
TRAIL
SYSTEM**

Public Works and
Trails Update

Public Works Updates

- P&D Trail Program responsibilities transfer to PW effective January 1st 2021. Dallas County Mobility Plan published on PW website.
 - PW presented to TAPP Board at June 3rd 2021 meeting.
- PW continues assessment of transferred trail projects and attending meetings with our agency partners and stakeholders.
- Dallas County adopted updated Metes and Bounds for the new Commissioner District Boundaries in November 2022.
- Dallas County Awarded TA Set Aside Funding for Chalk Hill Trail and Central Trail in December 2022 from NCTCOG.
 - TxDOT AFA's for both projects have been received.
- Public Works assisted with several TxDOT TA Set Aside Support Letters for our Partner Cities for the current Call for Projects.
 - Cotton Belt Trail and the 5 Mile Creek Trail received funding.

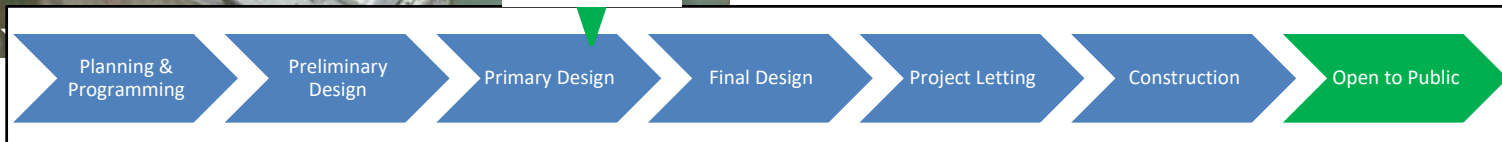
Cypress Waters Trail

Project Scope:

- New Construction of 14 feet wide reinforced concrete trail that includes cross drainage structures and trail safety appurtenances.

Status Update:

- City of Dallas executed Amendment to ILA in June. ILA was fully executed through Commissioners Court in August 2022.
- ROW easements are still being negotiated between City and Developer
 - **Meetings with the City, County, NCTCOG & TxDOT occurred on Oct. 30th and Dec. 15th**
 - **Dallas County DA is reviewing easement documents and PSA (finishing reviewing)**
 - **95% plans were submitted to TxDOT (expecting review comments by Feb. 2nd)**
 - City will be responsible for drafting new easement document with Developer
- County consultant has created a ROW Easement Exhibit for City review



Chalk Hill Trail

Project Scope:

- New Construction of 12 feet wide reinforced concrete Trail with access trails and sidewalk to neighboring communities, 3 bridges, cross drainage culverts and other trail safety appurtenances.

Status Update:

- Received TA Set-Aside funding from NCTCOG for \$3.4 million in Construction Funding
- Received draft AFA in October from TxDOT
 - DA has reviewed AFA and provided comments to TxDOT (awaiting TxDOT final copy for County execution)
- County is expecting consultant proposal by the end of this week
- City is working on the ROW at south end of the project (Phase 3)
- City of Dallas was awarded a 2023 TxDOT TA Set-Aside grant for part of Phase 3



We're Here

Planning &
Programming

Preliminary
Design

Primary Design

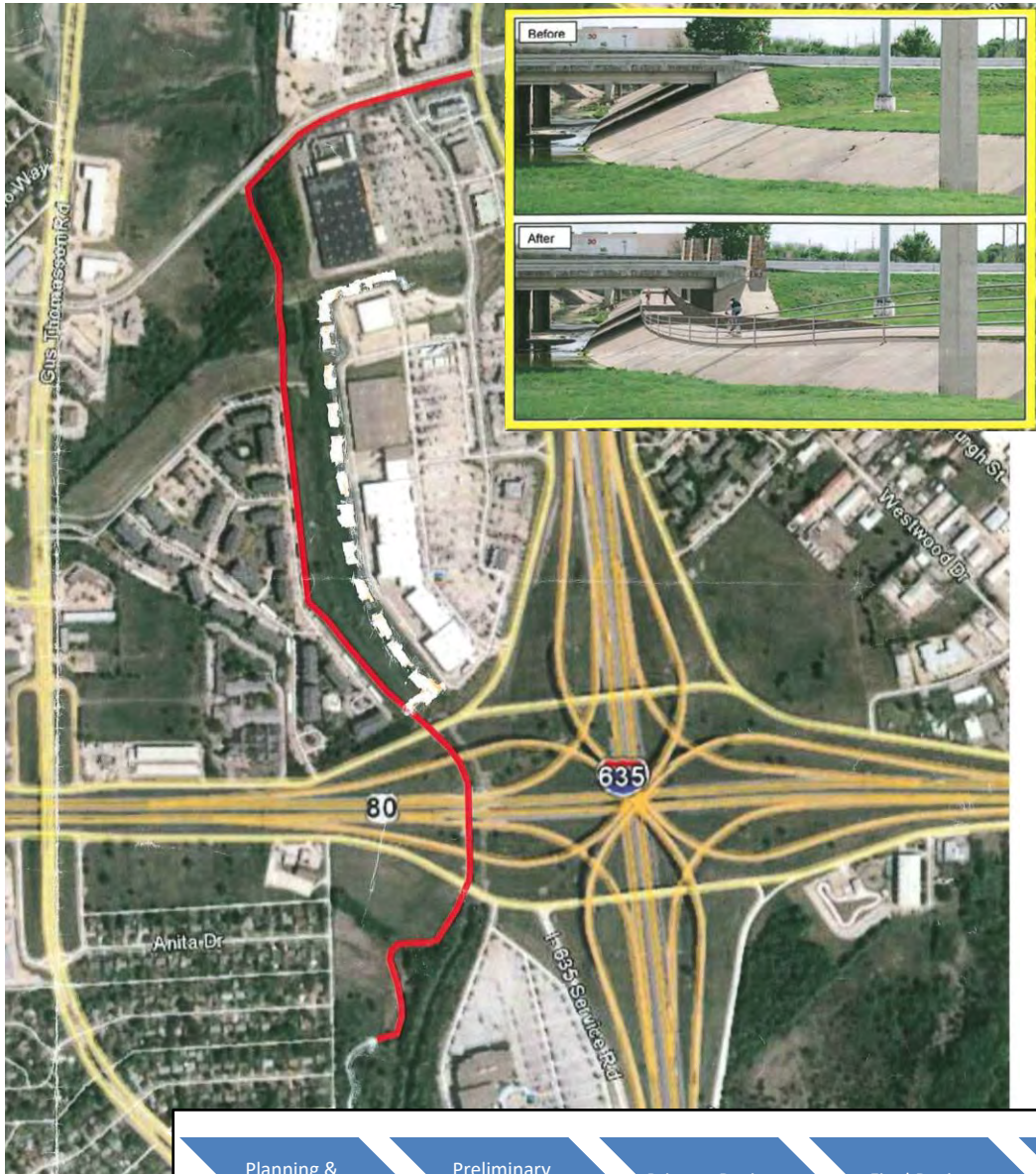
Final Design

Project Letting

Construction

Open to Public

Heritage Trail (Under 80 Trail)



Project Scope:

- New Construction of 12 feet wide reinforced concrete Trail with 2 pedestrian bridges and parking amenities.

Status Update:

- City is coordinating with TxDOT on improvements within State Corridor
- **PSA with City of Mesquite was fully executed on October 17th**
- **City of Mesquite awarded bid earlier this month. Beginning construction this Spring**

We're Here

Planning & Programming

Preliminary Design

Primary Design

Final Design

Project Letting

Construction

Open to Public

Campion Trail

Project Scope:

- New Construction of 12 feet wide reinforced Concrete Trail includes construction of three bridges, 6 low water crossings & 3 boardwalks.

Status Update:

- Phase 1 –River Hills to Frasier Dam (100% Design)
 - Split into two phases due to ROW issues
 - Southern segment began construction in July (**Concrete Pavement is complete**)
 - City is working on Agreements with City of Dallas and USACE for remaining section.
- Phase 2- Frasier Dam to California Crossing (Dallas County Participation)
 - **Dallas County has received 100% plans in July and provided comments**
 - **Final Plans and Environmental pending USACE approval**
 - City anticipates 100% plans to be completed later this year and bidding phase 2 in 2024



Campion Trail Phase 1A

Construction Photos





Parks and Open Space Update

Parks and Open Space Property Requests

Trinity River Authority Sewer Easements

Trinity River Mountain Creek Preserve

Paul S. Dryer Preserve at Windmill Hill

Brazos Electric Access Easement

Goat Island Preserve

City Sewer Projects

Rowlett Creek Preserve

Open Space Coordinator



Welcome Jade Affleck!

Jade is a recent graduate from the University of North Texas with a B.S. in Ecology for Environmental Science. She has experience in community outreach, project management and environmental research through her internship opportunities with Texas Conservation Alliance, Trust for Public Land, and the Botanical Research Institute of Texas. Her passion projects include ecological restoration and wildlife conservation. She enjoys hiking, camping and in her free time can often be found reading, gardening, or hanging out with her cat, Loki.

Past Events

Cleanup at Post Oak Preserve with TCA

Texas Conservation Alliance (TCA) partnered with Dallas County on the 3rd cleanup at Post Oak Preserve on December 9th. It was a great success! We may make this an annual event with them. Thank you TCA!



Upcoming Events

Community Forest Dedication Ceremony at Spring Creek Forest Preserve

Join the Preservation Society for Spring Creek Forest, City of Garland, and Dallas County to celebrate the induction of Spring Creek Forest Preserve into the Old Growth Forest Network as a Community Forest.

Saturday, February 24, 2024 at 1:00 p.m.

Spring Creek Forest Preserve, 1770 Holford Road, Garland Texas 75044

A guided hike will follow the ceremony at 1:45 p.m.



OLD-GROWTH FOREST NETWORK

Upcoming Events

Post Oak Preserve BioBlitz

Join Texas Nature Trackers for this timed event focused on documenting as many species as possible in a specified area using iNaturalist or eBird.

Several guided hikes will be held throughout the day.

April 6, 2024

8:00 a.m. to 8:00 p.m.



STEM Environmental
Education Center



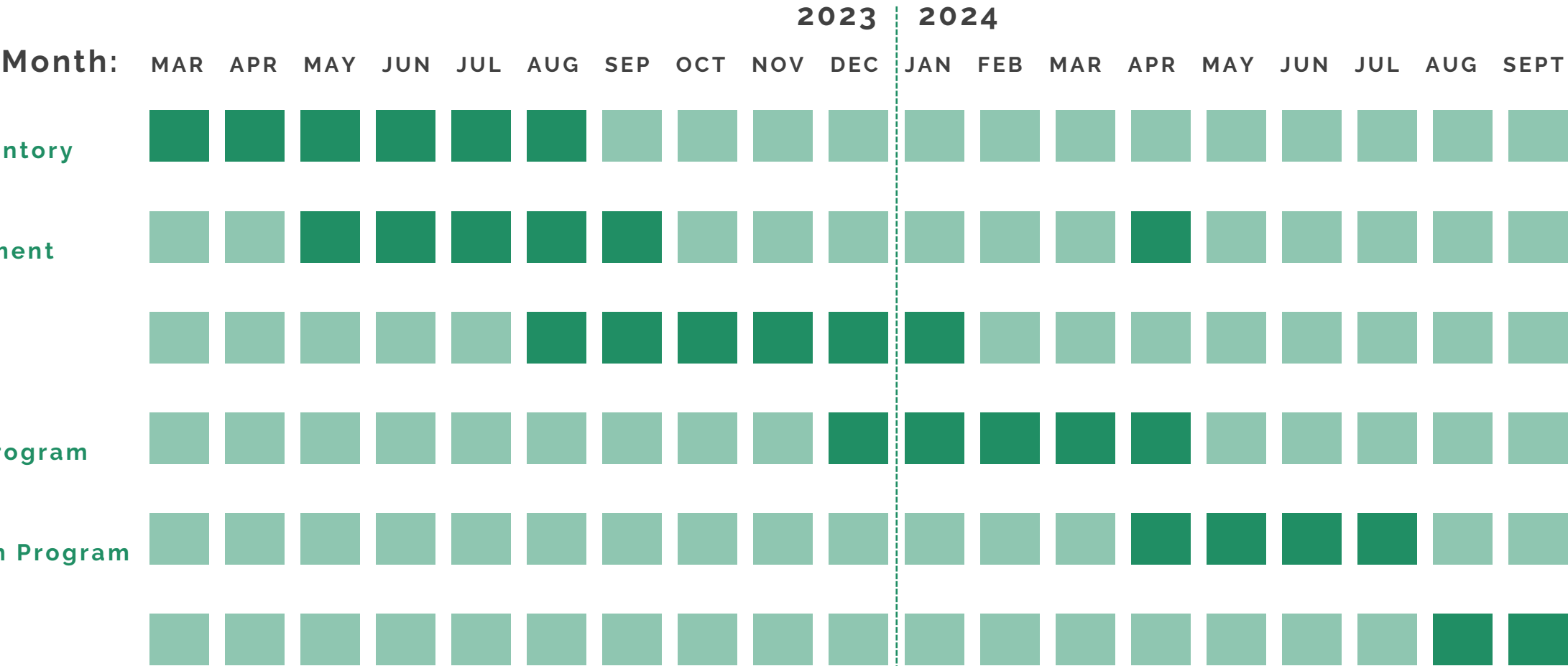
Open Space Plan Update

DALLAS COUNTY OPEN SPACE PLAN

TRAIL AND PRESERVE PROGRAM BOARD
PROJECT BRIEFING #5
February 1, 2024



PROJECT TIMELINE



Schedule is tentative and subject to change.

PRESERVE PROFILES

The individual preserve profiles highlight the baseline conditions of the preserves and serve as initial inventory and assessment of the Dallas County Parks & Open Space Program.

The profiles were completed using a variety of available data sources and from observations during site visits.



PRESERVE PROFILES

Overview information of the preserve and the observed **ecological** and **cultural resources**

Identification map of where preserve is located in the County

Aerial map highlighting available **amenities, facilities, entrances, and trails**



Summary of **existing conditions, issues, and opportunities** observed for the preserve today

Photos of the preserve and available **amenities, facilities, and existing conditions**

DEMAND-BASED ASSESSMENT

Public & Stakeholder Engagement:

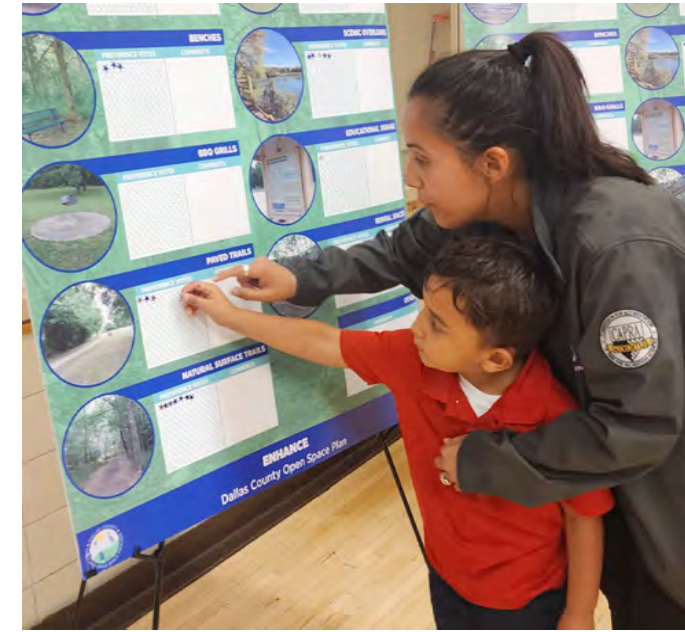
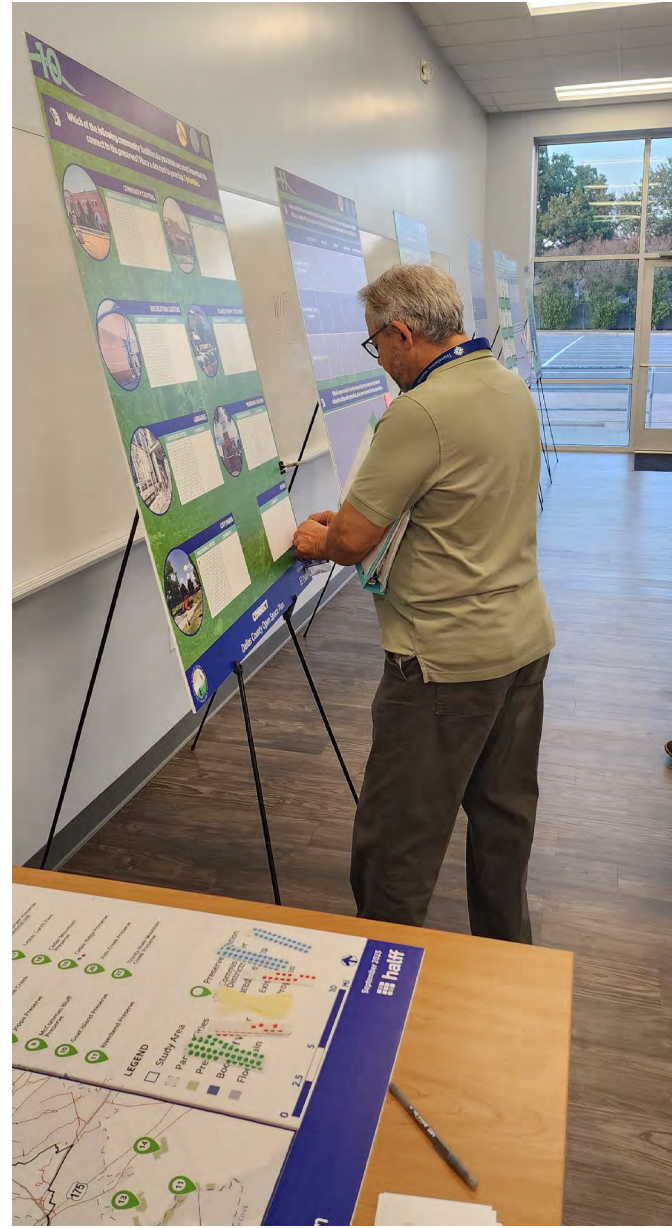
- Preserve Management Partner Meetings
- Preserve Intercept Survey
- TAPP Board Visioning Session
- Statistically-Valid Survey
- Stakeholder Listening Sessions
- Countywide Online Survey
- Public Open House Meetings



DEMAND-BASED ASSESSMENT

Key Engagement Themes:

- Establishing Preserve Classifications
- Building Preserve Awareness
- Communication & Collaboration



RESOURCE ASSESSMENT

Ecological Resource Assessment

- Review of the **natural resources** within the preserves and within a ½ mile buffer surrounding each preserve
- Natural resources include:
 - Vegetation communities
 - Water resources
 - Threatened & endangered species (federally and state listed)
 - Invasive Species
- Information was gathered using the following resources:
 - Site visits to each preserve
 - Historic and current aerial imagery
 - TPWD's Texas Ecosystem Analytical Mapper (TEAM)
 - U.S. Fish & Wildlife Services – Information for Planning and Consultation (IPaC)
 - Texas Natural Diversity Database (TXNDD)

THREATENED AND ENDANGERED SPECIES

U.S. Fish and Wildlife Service (USFWS) and Texas Parks and Wildlife Department (TPWD) provide a database of state and federally listed species that could potentially occur in Dallas County. The assessment of the 21 preserves was made with consideration of potential habitat for any and all of these species in order to account for their potential presence when creating any future development or wildlife management plans. In the case that any of these species are identified within the preserve, USFWS (federally listed species) or TPWD (state listed species) should be contacted for guidance on the necessary steps following the identification. The species listed on the subsequent pages are federally and/or state listed species that could potentially occur in the preserves based on the observed habitats.



Golden-cheeked Warbler

- The Golden-cheeked Warbler (*Setophaga chrysoparia*) is the only bird species whose population nests entirely in Texas.
- Males return to nesting grounds early, so look and listen for this bird from late March until they quiet down in mid-May.
- Although a few Golden-cheeked Warblers inhabit suburbs, most are in pristine juniper-oak woodland habitats in protected parks and refuges of the Edwards Plateau of Central Texas.

Piping Plover



- The piping plover (*Charadrius melodus*) is a small migratory shorebird that nests and feeds along coastal sand and gravel beaches in North America.
- There are three subspecies populations of piping plover.
- The adult has yellow-orange-red legs, a black band across the forehead from eye to eye, and a black stripe running along the breast line.



Tricolored Bat

- The tricolored bat (*Perimyotis subflavus*) is one of the smallest bats native to North America.
- During the winter, tricolored bats are found in caves and mines, although in the southern United States where caves are sparse, tricolored bats are often found roosting in road culverts.
- During the spring, summer and fall, tricolored bats are found in forested habitats where they roost in trees.
- The tricolored bat is a small, insect eating animal that is distinguished by its unique tricolored fur which often appears yellowish to nearly orange.

Red Knot



- The Red Knot (*Calidris Canutus rufa*) is a migratory shorebird that travels up to 12,000 miles twice a year from its breeding grounds on the high Arctic tundra to its southern non-breeding sites.
- The Red Knot relies on the few large tidal flats with abundant food resources that the world has to offer.
- After nearly doubling its weight, it burns off fat stores during the three or more days of non-stop flying.
- Red Knots from eastern North America have declined sharply in recent decades in part to unsustainable harvest of horseshoe crab eggs, and they have become a flagship species for shorebird conservation in the twenty-first century.

RESOURCE ASSESSMENT

Cultural Resource Assessment

- Review of the cultural resources within the preserves and within a ½ mile buffer surrounding each preserve
- Information was gathered using the following resources:
 - Texas Archeological Sites Atlas (TASA)
 - Texas Historic Site Atlas (THSA)
 - TxDOT's Potential Archeological Liability Map (PALM) for Dallas County
 - 1900 Sam Street's Map for Dallas County
 - 1920 USDA Soils Map for Dallas County
 - U.S. Geological Survey (USGS) topographic map
 - Texas Historic Overlay (THO) georeferenced maps
 - Historic and current aerial photography



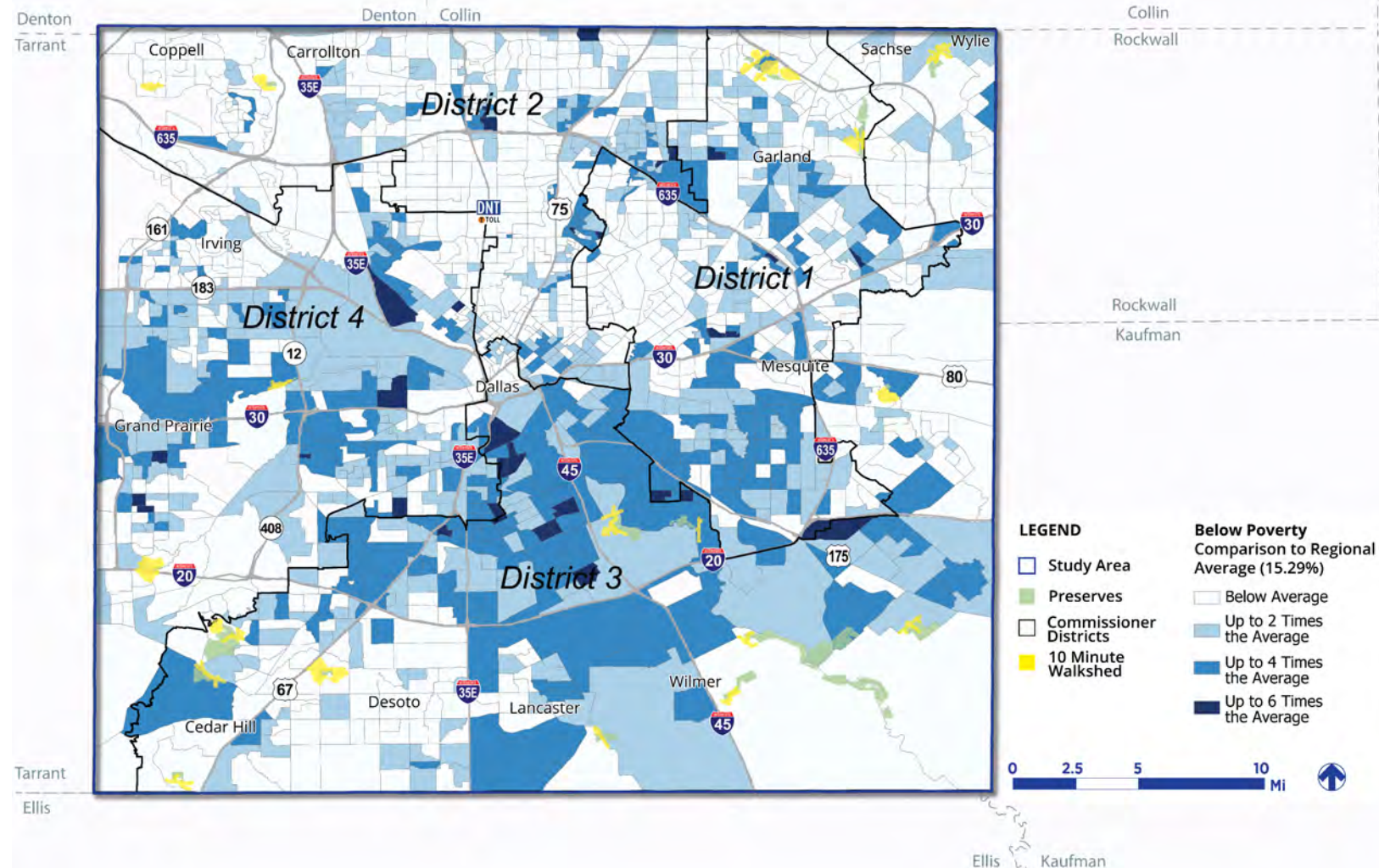
EQUITY ASSESSMENT

Evaluated access to the preserves for potentially vulnerable populations.

Vulnerable Populations:

- Low-Income & Minority
- Limited English Proficiency (LEP)
- Persons with Disabilities
- Zero Car Households

Comparison of poverty levels to the regional average at the Census block group geography



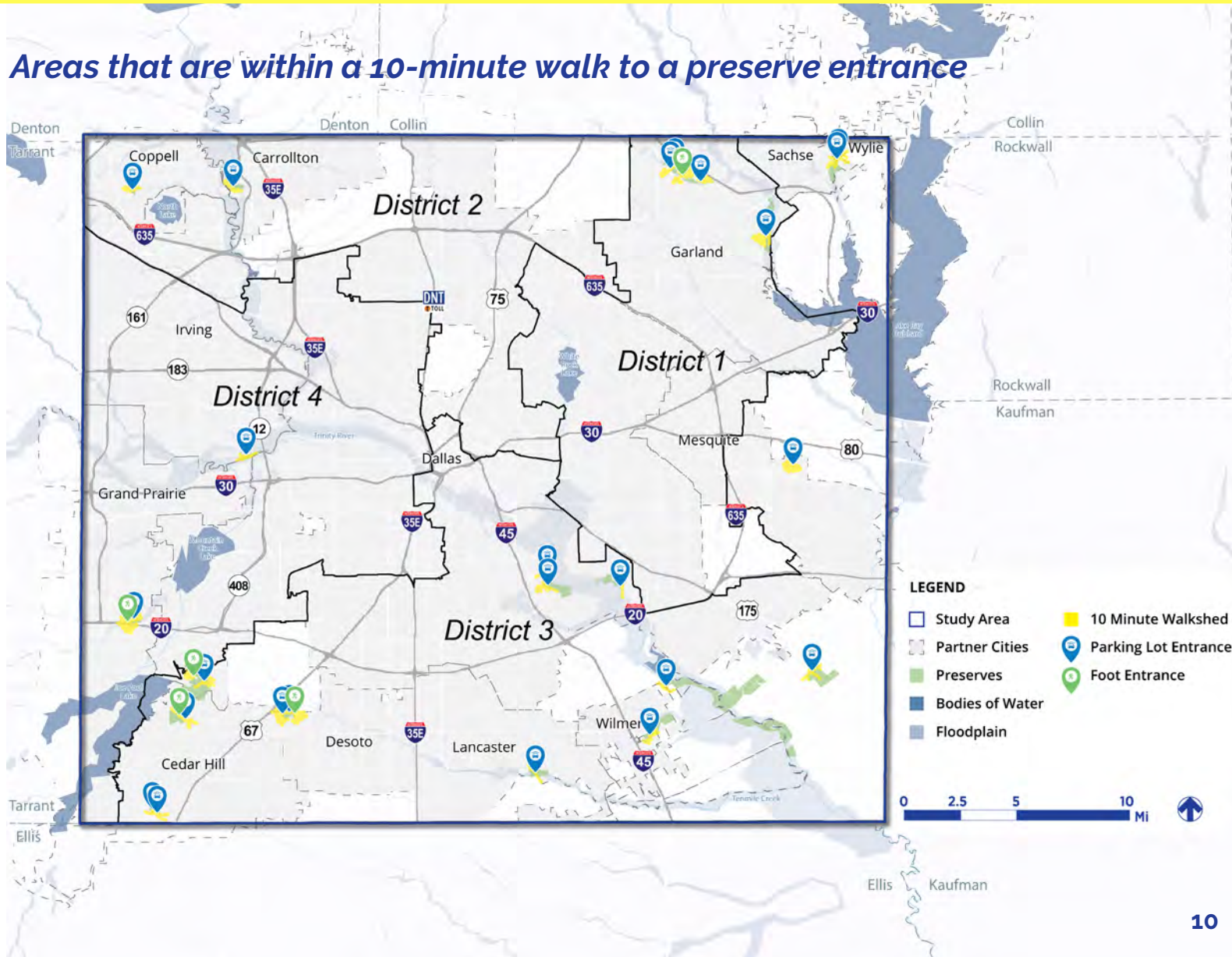
ACCESS & CONNECTIVITY ASSESSMENT

This assessment looked at access **to** and **within** the preserves and increasing access at the district level.

Access to Preserves:

- Walksheds – the area surrounding the preserves that are within a 10-minute walk of an entry point.
- Driveshed – the area surrounding the preserves that can be accessed via car within 20 minutes.

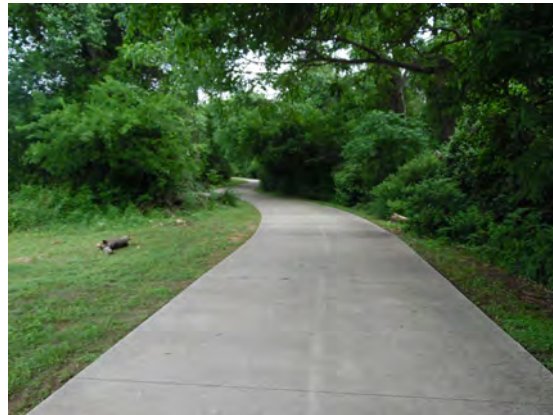
Areas that are within a 10-minute walk to a preserve entrance



ACCESS & CONNECTIVITY ASSESSMENT

Access within Preserves:

- Accessible Parking Lots
- Access to Amenities & Facilities
- Accessible Trails
- Signage



LESTER LORCH



Signage at Lester Lorch Park Preserve mainly pertains to its extensive disc golf course. Other signage around the preserve is worn or damaged. Given that there are no trails within the preserve, there are no trail markers or emergency markers.

CEDAR MOUNTAIN PRESERVE



Signage at Cedar Mountain Preserve is aged and damaged in some spots. Signage language is often aggressive and does not present safety information in a way that encourages preserve use. This preserve does not have educational signage or emergency markers. Wayfinding from the parking lot to the trailhead is also needed.

CEDAR RIDGE PRESERVE

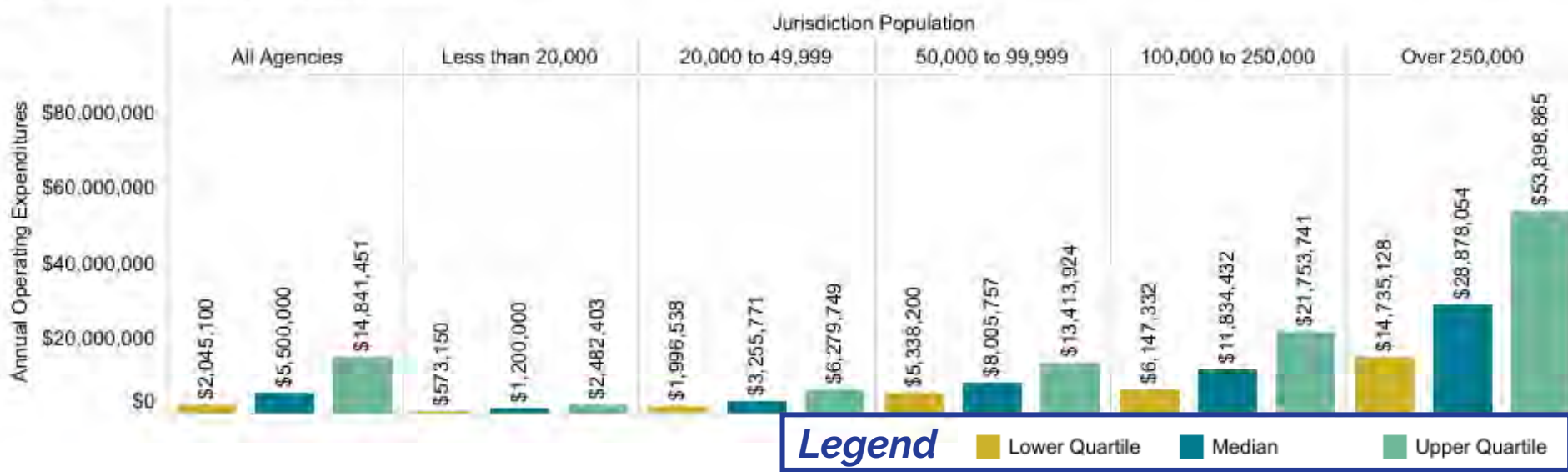


Cedar Ridge Preserve has well marked trail directional signage in good condition. Some info kiosk maps have age-related damage. Newer signage installed by Audubon Dallas has friendlier language than the older, more aggressive signage that still exists in some places. The preserve does not have any emergency markers.

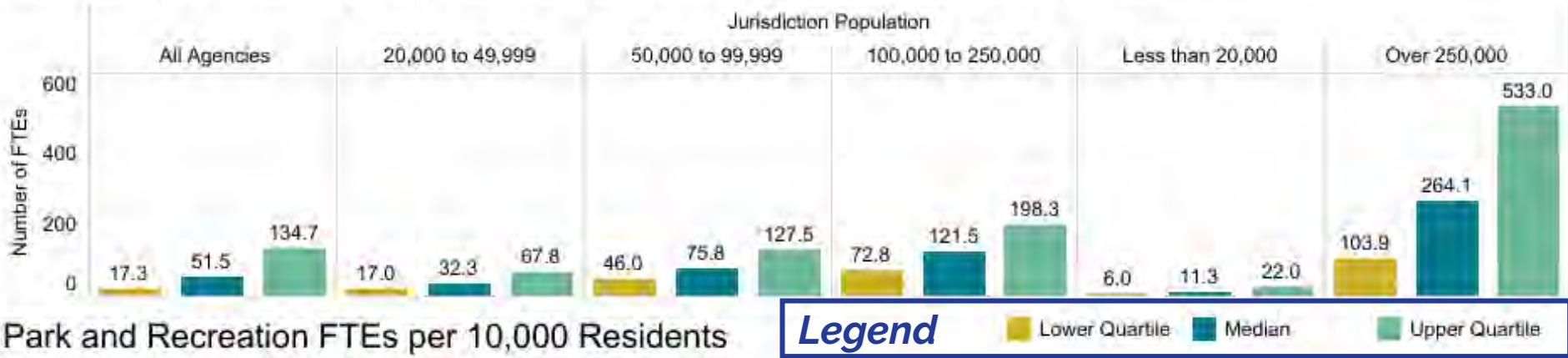
OPERATIONS ASSESSMENT

2023 NRPA Agency Performance Review National Metrics

Annual Operating Expenditures



Park and Recreation Agency Staffing: Full-Time Equivalent Employees (FTEs)



Park and Recreation FTEs per 10,000 Residents

This assessment evaluated local budgets and staffing capacity for the preserve management partners and compared available jurisdiction data to national metrics set by NRPA for communities of similar sizes.

NEXT STEPS

IN PROGRESS TASKS

- Develop systemwide and preserve-specific recommendations
- Draft Chapter 3

UPCOMING TASKS

- Schedule April public meeting series

CONTACT INFORMATION

Kendall Howard, AICP

Project Manager

khoward@halff.com

(214) 217-6401

Kelsey McNiece

Deputy Project Manager

kelsey.mcniece@halff.com

(214) 346-6318

Discussion Item: Old Growth Forest Network



OLD-GROWTH FOREST NETWORK

Discussion Item:

DMN Editorial - Let's Work to
Make Dallas Bike-Friendlier

Proposal of Future Agenda Items



Next Meeting
April 4, 2024

See you next time!