

COLLEGE PARK DISTRICT

BILL POOLE, P.E.
FACILITIES MANAGEMENT
UT ARLINGTON

Presentation for Military Engineers
November 2014

College Park District

Birdseye View – Entire Development



College Park District Proposed Site



College Park District Proposed Site



FORMER SITE CONDITIONS

Coronado Apartments



College Park District Concept Drawing (Jacobs)

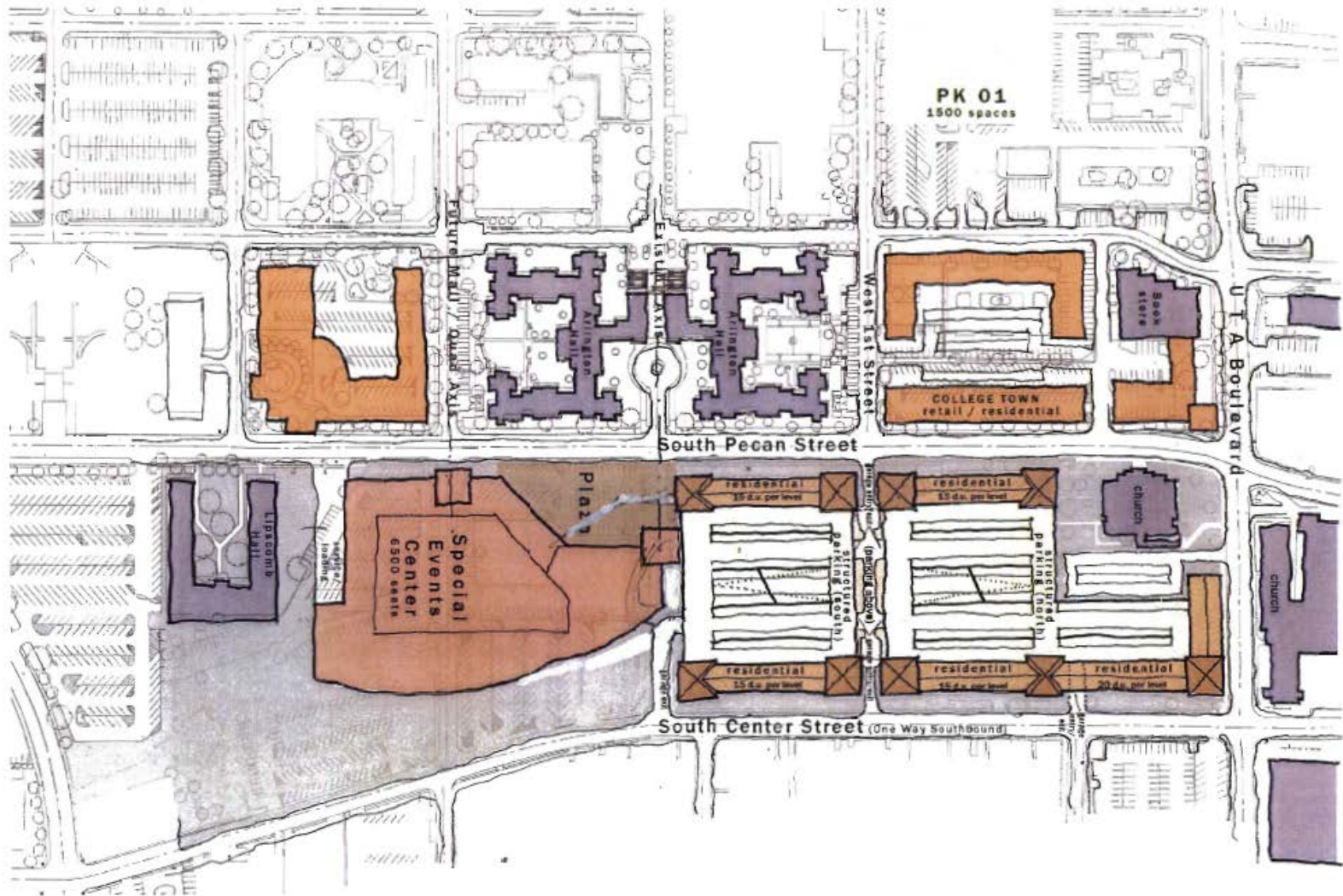


Let's back up to the beginning.....

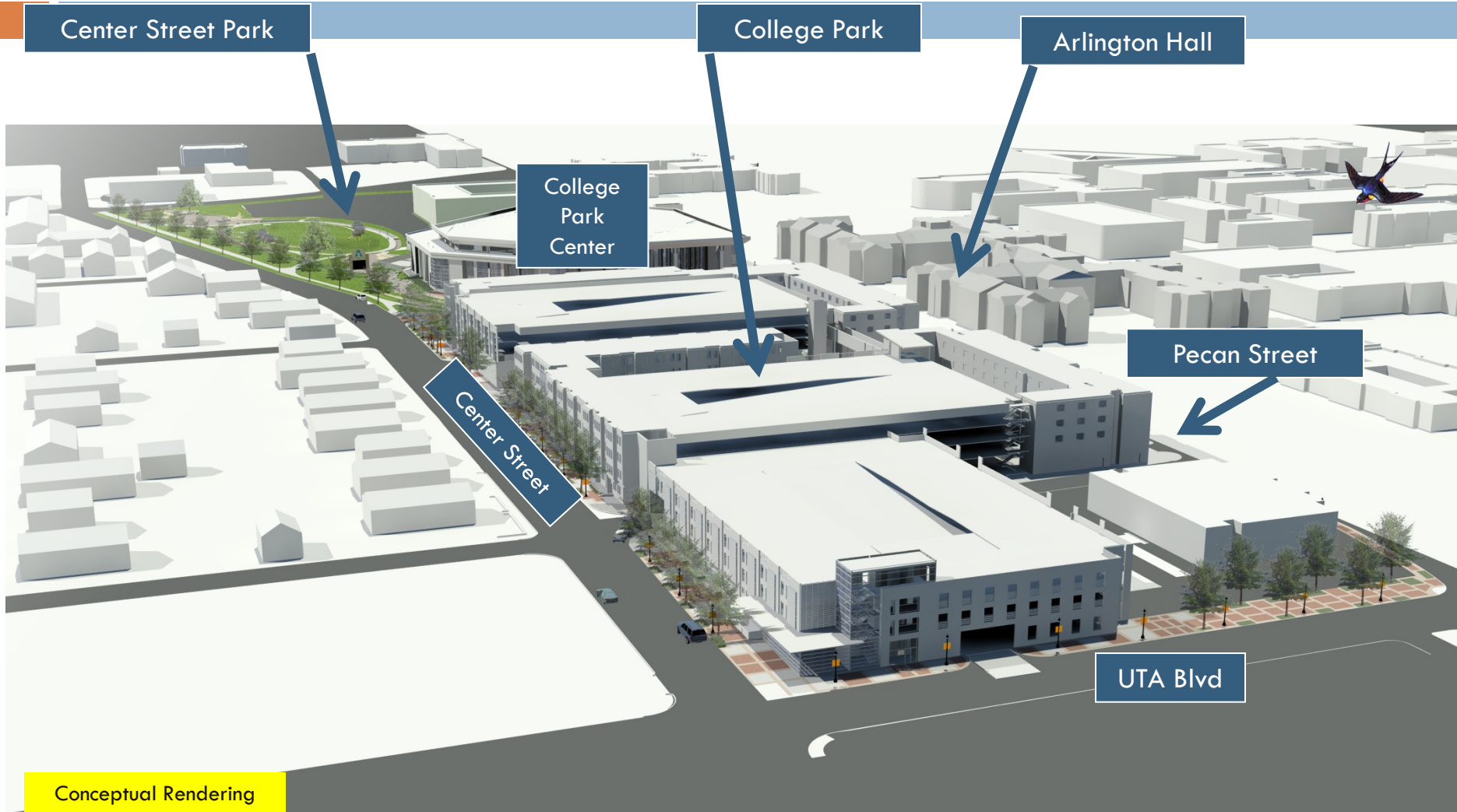
Where We Started, in the Very Early Stages

- College Master Plan
- Stakeholder meetings
- Funding
- Concepts

College Park District Concept Sketch Drawing



College Park District East Campus Overview



College Park District Layout



College Park District

Things Necessary

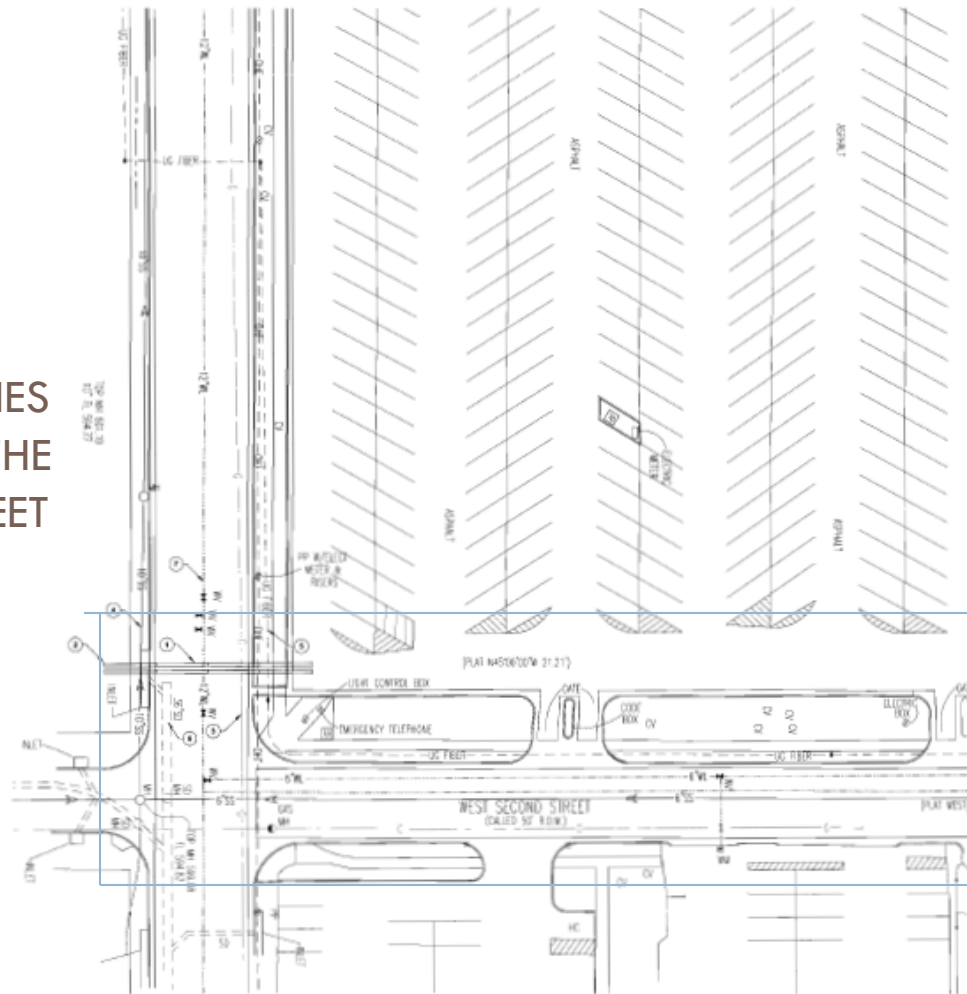
Early Programming and Site Development:

- Program Requirements
- Utilities – Advance Planning saved 1 year
 - Electric Service
 - Storm Water Management
- Siting the buildings
- Concepts

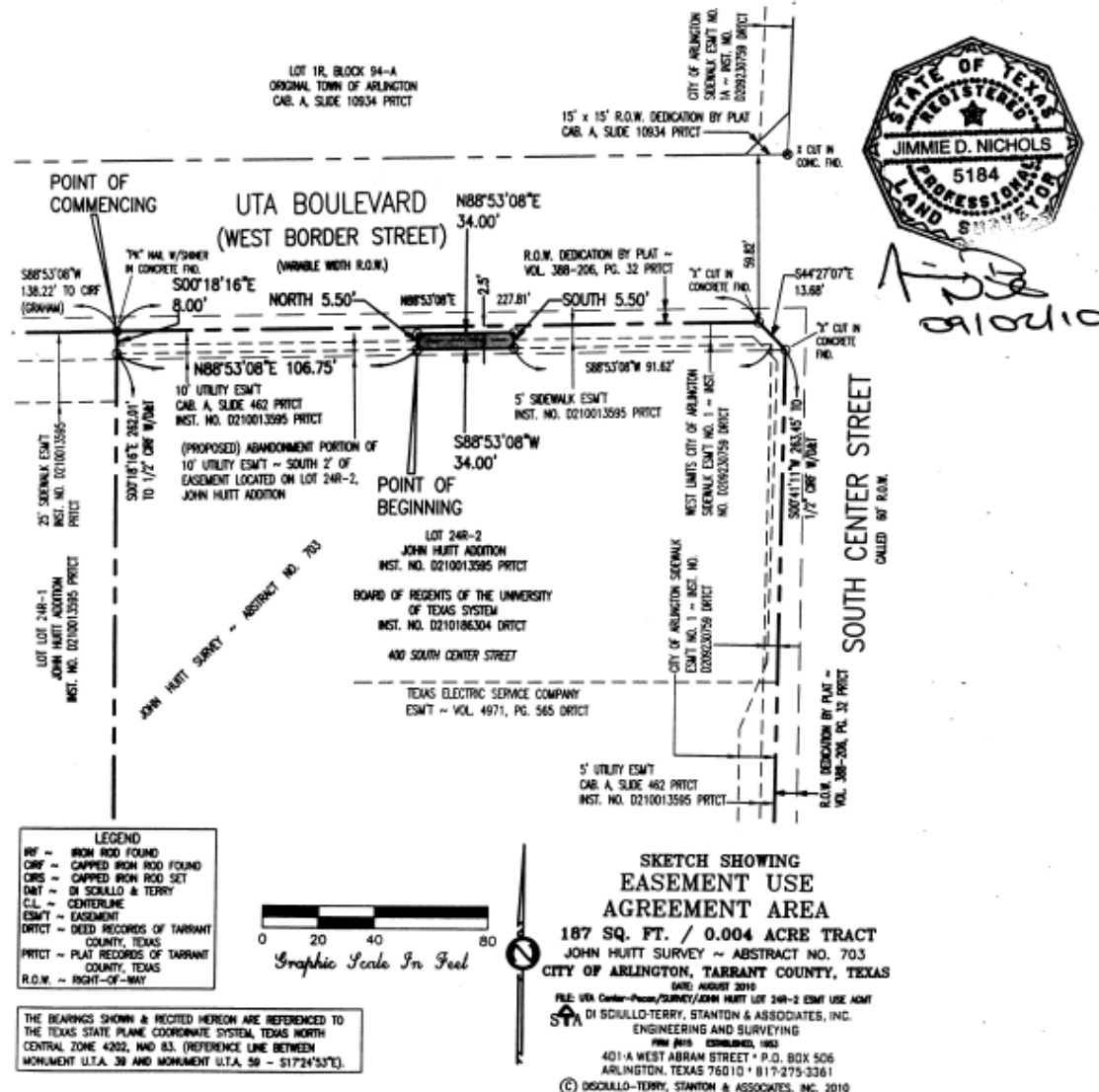
Site Plan

Utility Crossing

EXISTING UTILITIES
RIGHT DOWN THE
MIDDLE OF STREET

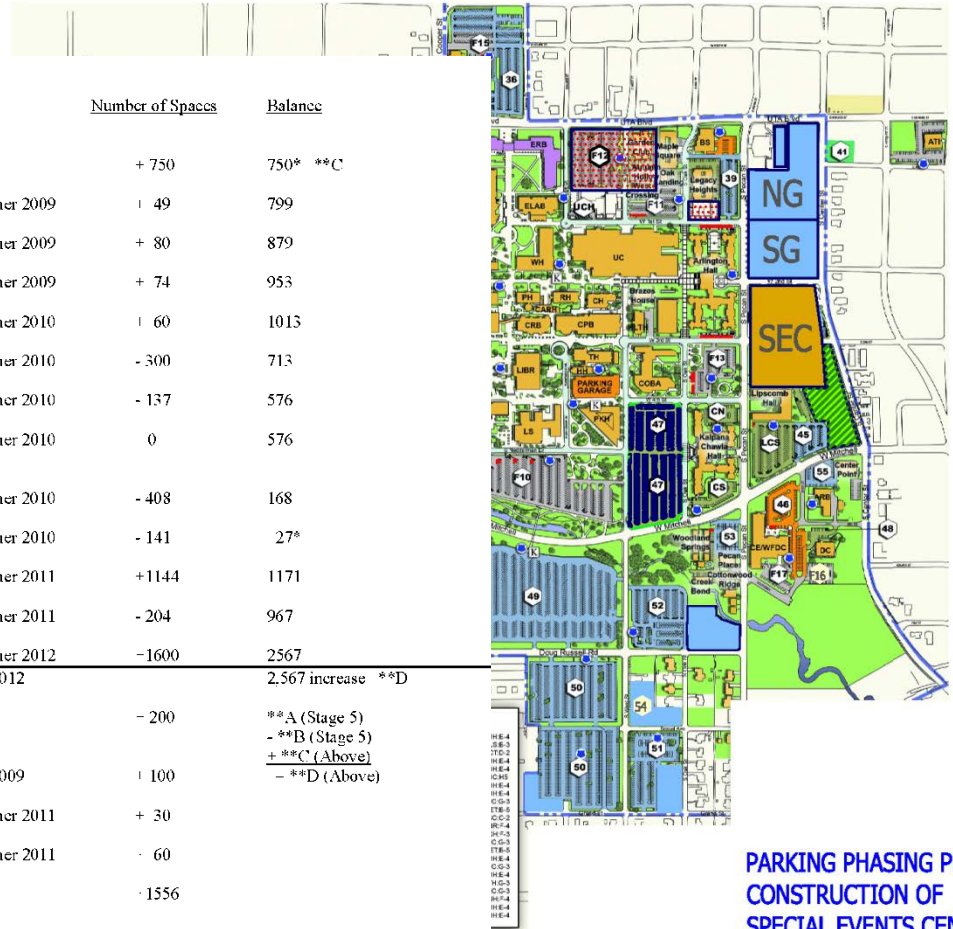


Obtain Easements



Necessity to Develop Parking Plan

PRELIMINARY VERSION 2(2-24-2009) SEC PROJECTED PARKING TIMETABLE SUMMARY SHEET (6)



**PARKING PHASING PLAN FOR
CONSTRUCTION OF
SPECIAL EVENTS CENTER**

Special Event Center Projected Parking Timeline

Parking Modifications

Average of vacant spaces in the South Lots (Does not include Stadium Parking or Lot 33)

Expansion of Lot 50

Expansion of Lot 51

New Lot 54

Expansion of Lot 52

Closure of Lots 42 & 43

Closure of Lot LCN

Lot 47 converted to Residential Parking, Arlington Hall, Kaplana Chawla Hall & Brazos House to use (596 spaces) (Net increase of 51 Residential spaces)

Closure Lot AH

Partial Closure of Lot 40

Open South Parking Garage

Closure of Remainder of Lot 40

Open North Parking Garage

Available Net Parking Adjustments

*Additional contingency parking (with shuttle support) to Lot 26 (Wetsel Stadium)

Possible acquisition on West Campus (Monroe & Kimberly Apartments)

Possible removal of Autumn Hollow

Potential Acquisition (Richlyn Apartments)

Future UC Parking Garage

Lots F10, F12, F13, F16, F17, CN, CS, 39, 52 & 55 tentatively not affected.

Date	Number of Spaces	Balance
Now	+ 750	750* **C
Summer 2009	+ 49	799
Summer 2009	+ 80	879
Summer 2009	+ 74	953
Summer 2010	+ 60	1013
Summer 2010	- 300	713
Summer 2010	- 137	576
Summer 2010	0	576
Summer 2010	- 408	168
Summer 2010	- 141	27*
Summer 2011	+1144	1171
Summer 2011	- 204	967
Summer 2012	-1600	2567
Fall 2012		2,567 increase **D
Now	- 200	**A (Stage 5) - **B (Stage 5) + **C (Above) - **D (Above)
Fall 2009	+ 100	
Summer 2011	+ 30	
Summer 2011	- 60	
TBD	-1556	

Special Events Center

Start site construction 5/2010
Completion 3/2012

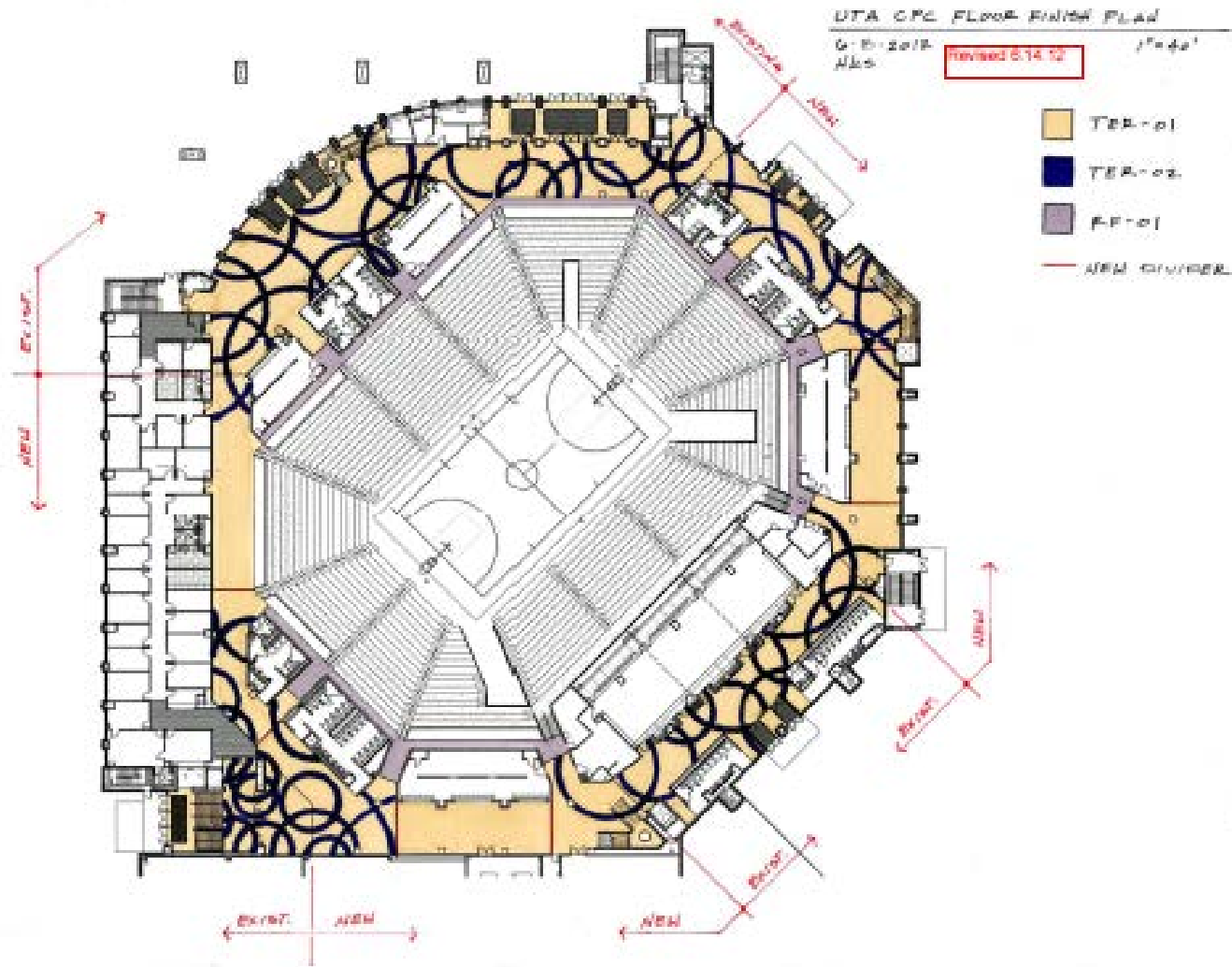
South Parking Structure

Start Construction 10/2010
Completion 8/2011

North Parking Structure

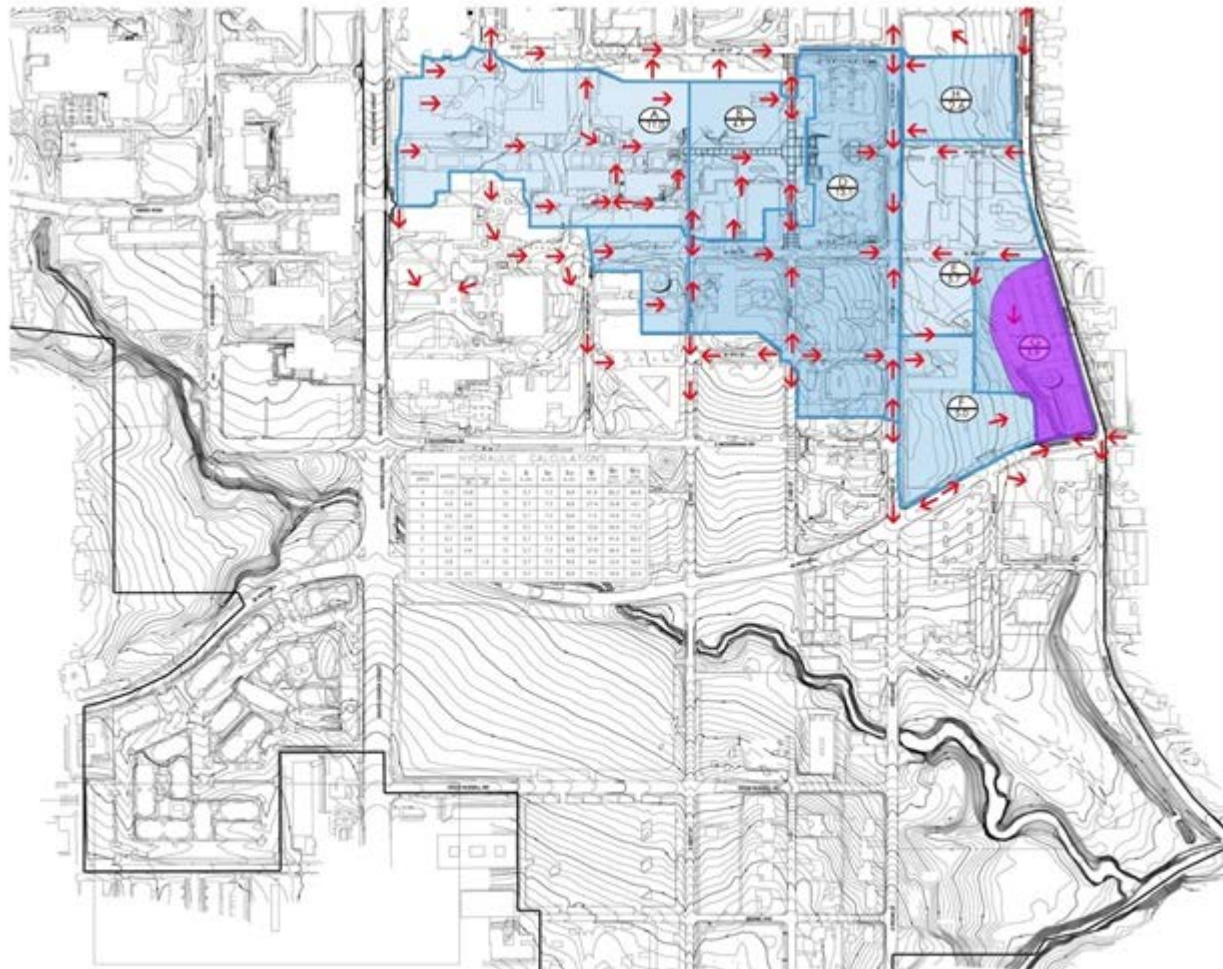
Start Construction 9/2011
Completion 8/2012

College Park Center



The Green At College Park

HYDROLOGY MAP



LEGEND:



Drainage Area
Acres

← Direction of runoff

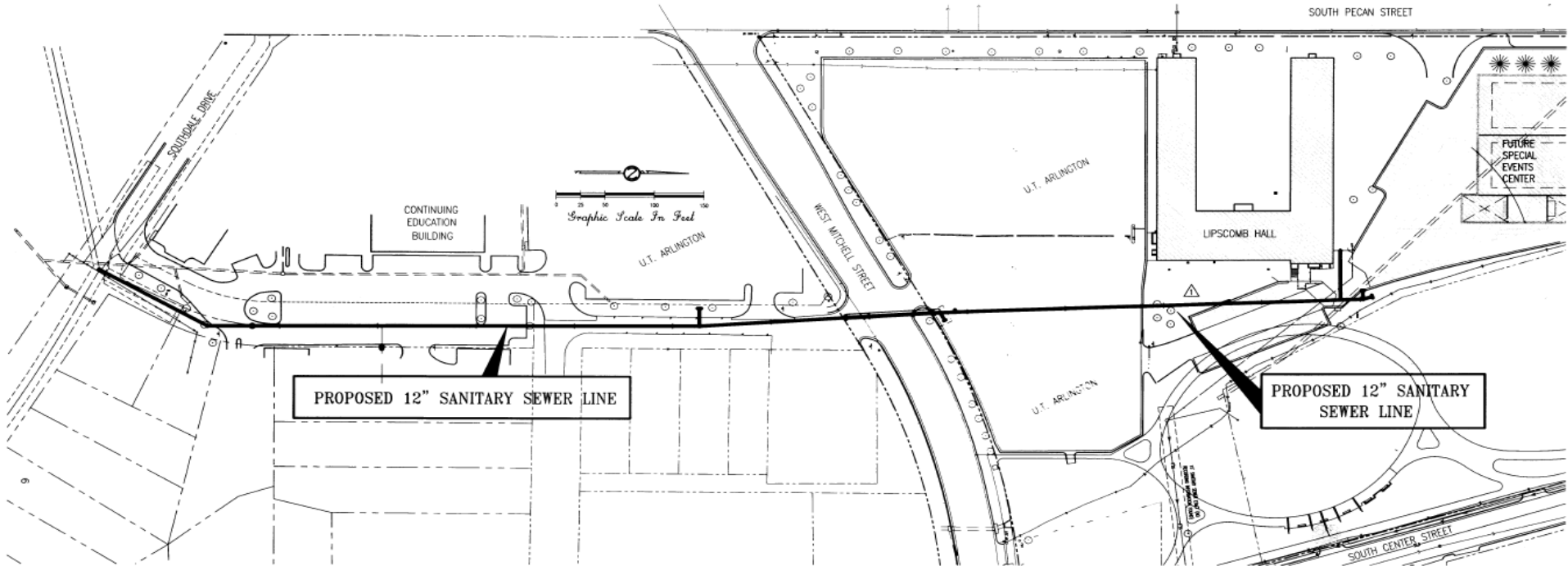
— Drainage Area Boundary

FORMER SITE CONDNTIONS

Storm water



College Park Center



CITY OF ARLINGTON STANDARD SWPPP NOTES

1. STORE ALL TRASH AND WASTE MATERIALS IN COVERED BINS OR OTHER ENCLOSURES UNTIL PROPER DISPOSAL AT OFF-SITE FACILITIES. TRASH AND WASTE SHALL BE REMOVED FROM THE SITE AT REGULAR INTERVALS TO PREVENT OVERFLOW OF THE CONTAINERS.
2. HAZARDOUS MATERIALS SHALL BE STORED IN CLOSED CONTAINERS, AND THE CONTAINERS SHALL BE PLACED IN A SHELTER THAT PREVENTS CONTACT WITH RAINFALL AND RUNOFF. THE AMOUNT OF HAZARDOUS MATERIALS STORED ON-SITE SHALL BE MINIMIZED AND LIMITED TO THE MATERIALS NECESSARY FOR THE CURRENT PHASE OF CONSTRUCTION. HAZARDOUS MATERIAL STORAGE SHALL BE IN ACCORDANCE WITH ALL FEDERAL, STATE AND LOCAL LAWS AND REGULATIONS.
3. STOCKPILES OF SOIL, SAND, AND OTHER MATERIAL THAT CAN BE TRANSPORTED BY STORM WATER SHALL BE CONTAINED WITHIN SEDIMENT CONTROLS OR COVERED WITH SECURED TARP.
4. THE CONTRACTOR SHALL DESIGNATE AN AREA TO BE USED FOR CONCRETE WASH WATER. A PIT LARGE ENOUGH TO CONTAIN THE WASH WATER WITHOUT OVERFLOWING SHALL BE EXCAVATED. IF CONCRETE PLACEMENT WILL OCCUR OVER A PERIOD OF TIME GREATER THAN A WEEK, A SIGN DESIGNATING THE AREA AS THE CONCRETE WASHOUT AREA SHALL BE POSTED IN A LOCATION VISIBLE FROM THE STREET.
5. SLURRY FROM CONCRETE SAWCUTTING SHALL BE VACUUMED OR RECOVERED BY OTHER MEANS FOR PROPER DISPOSAL. IF A CURB INLET IS NEAR THE PAVEMENT TO BE CUT, THE INLET SHALL BE BLOCKED WITH SANDBAGS DURING SAWCUTTING TO PREVENT SLURRY FROM ENTERING THE STORM DRAIN.
6. APPLICATION OF LIME OR OTHER CHEMICAL STABILIZERS SHALL BE LIMITED TO THE AMOUNT THAT CAN BE MIXED AND COMPACTED BY THE END OF EACH WORKING DAY. STABILIZER SHALL BE APPLIED AT RATES THAT RESULT IN NO RUNOFF FROM THE SITE. STABILIZATION SHALL BE DELAYED IF RAIN IS FORECAST FOR THE WORKING DAY. NO TRAFFIC OTHER THAN WATER TRUCKS AND MIXING EQUIPMENT SHALL PASS OVER THE SPREAD STABILIZER UNTIL AFTER MIXING IS COMPLETED.
7. SANITARY FACILITIES SHALL BE PROVIDED IN ACCORDANCE WITH THE CITY OF ARLINGTON'S CONSTRUCTION ORDINANCE AND BE PLACED AWAY FROM GUTTERS, INLETS, SWALES, AND OTHER DRAINAGE WAYS. THE LOCATION OF THE SANITARY FACILITY SHALL BE NOTED ON THIS SHEET BY THE CONTRACTOR.
8. SUPER-CHLORINATED WATER FROM WATER LINE DISINFECTION SHALL NOT BE ALLOWED TO ENTER THE STORM DRAINAGE SYSTEM.

9. THE CONTRACTOR SHALL CONSTRUCT A LINED, BERMED AREA OR OTHER SPILL PROTECTION MEASURE PER THE FIRE CODE FOR ANY TEMPORARY FUEL TANKS PLACED ON-SITE. THE VOLUME OF THE BERMED AREA SHALL BE AT LEAST 110% THE VOLUME OF THE TANK. THE LOCATION OF THE FUEL STORAGE AND CONTAINMENT SHALL BE NOTED ON THIS SHEET BY THE CONTRACTOR.

10. IF PUMPS ARE USED TO REMOVE WATER FROM TRENCHES OR POOLED AREAS, THE DISCHARGE SHALL BE FILTERED BEFORE THE WATER LEAVES THE SITE OR ENTERS THE STORM DRAINAGE SYSTEM. FILTRATION MAY BE ACCOMPLISHED BY DISCHARGING THE WATER ACROSS A VEGETATED AREA, THROUGH A SILT FENCE, THROUGH A ROCK BERM, OR WITH SIMILAR MEASURES. THE DISCHARGED WATER SHALL BE VISIBLY INSPECTED TO VERIFY THE FILTRATION IS PRODUCING A NOTICEABLE REDUCTION IN SEDIMENT LOAD. ADDITIONAL MEASURES SHALL BE TAKEN IF THE FILTERED WATER IS NOT VISIBLY CLEARER THAN THE WATER DISCHARGED BY THE PUMP.

11. DURING DRY AND WINDY PERIODS, DISTURBED SOIL SHALL BE SPRINKLED WITH WATER UNTIL DAMPENED AND REPEATED AS NEEDED TO PREVENT DUST GENERATION. WATERING FREQUENCY MAY BE AS OFTEN AS DAILY FOR SOILS IN WIND EROSION GROUPS 1 - 4.

12. A QUALIFIED REPRESENTATIVE OF EACH OPERATOR SHALL INSPECT THE CONSTRUCTION ACTIVITY EITHER ONCE EVERY 14 CALENDAR DAYS AND WITHIN 24 HOURS OF A STORM EVENT OF 3/8-INCH OR GREATER OR WEEKLY AT A SPECIFIED DAY AND TIME REGARDLESS OF PRECIPITATION. A WRITTEN SWPPP INSPECTION REPORT SHALL BE COMPLETED FOR EACH INSPECTION.

13. IF INSPECTIONS OR INVESTIGATIONS REVEAL THE BEST MANAGEMENT PRACTICES ARE INEFFECTIVE IN ELIMINATING OR MINIMIZING POLLUTANTS IN DISCHARGES FROM THE CONSTRUCTION ACTIVITY, THE BEST MANAGEMENT PRACTICES SHALL BE MODIFIED OR REPLACED BEFORE THE NEXT STORM EVENT WHENEVER POSSIBLE AND ALWAYS WITHIN SEVEN DAYS OF THE INSPECTION. THE SWPPP SHALL BE REVISED TO SHOW THE BMP CHANGES WITHIN SEVEN DAYS OF THE INSPECTION. REVISIONS TO SWPPP SHALL BE DATED AND INITIALED BY THE PERMITTEE OR HIS REPRESENTATIVE.

14. AT A MINIMUM, SEDIMENT SHALL BE REMOVED FROM CONTROLS WHEN THEIR CAPACITY IS REDUCED BY SOIL UNLESS MORE FREQUENT CLEANING IS SPECIFIED IN THE SWPPP. IF DURING MAINTENANCE THE CONTROL IS FOUND TO BE INEFFECTIVE, INSTALLED INCORRECTLY, OR DAMAGED, IT SHALL BE MODIFIED OR REPLACED.

15. IF AT ANY TIME EROSION AND SEDIMENT CONTROLS ARE FOUND TO BE INTENTIONALLY DISABLED, RUN-OVER, REMOVED, OR OTHERWISE RENDERED INEFFECTIVE, THEY SHALL BE MODIFIED OR REPLACED IMMEDIATELY.

16. CONSTRUCTION WASTE, DEBRIS AND SOIL BLOWN, TRACKED OR WASHED FROM THE SITE DURING CONSTRUCTION ACTIVITY SHALL BE CLEANED UP DAILY. CLEANING PAVEMENT BY WASHING SEDIMENT OR OTHER POLLUTANTS INTO THE STORM DRAINAGE SYSTEM IS PROHIBITED.

17. SEDIMENT DISCHARGED INTO THE MUNICIPAL SEPARATE STORM SEWER SYSTEM (STREETS, GUTTERS, STORM DRAINS, FLUMES, CHANNELS, ETC.) FROM THE CONSTRUCTION ACTIVITY DURING A RAIN EVENT SHALL BE REMOVED BEFORE THE NEXT RAIN EVENT WHENEVER POSSIBLE AND AT A FREQUENCY THAT PREVENTS NEGATIVE EFFECTS.

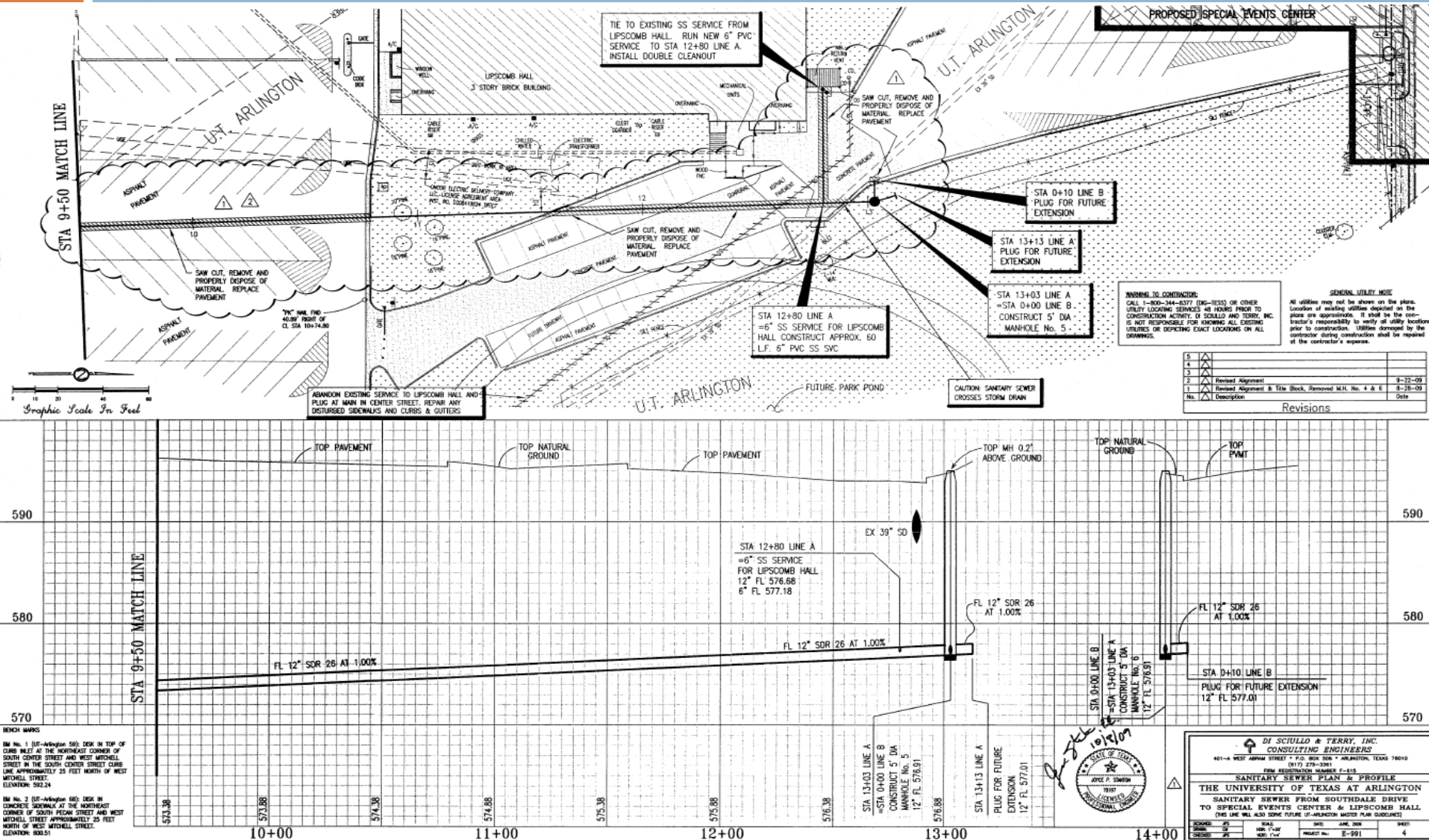
18. SPILLS AND RELEASES OF ANYTHING OTHER THAN STORM WATER INTO THE MUNICIPAL SEPARATE STORM SEWER SYSTEM SHALL BE IMMEDIATELY REPORTED TO THE CITY OF ARLINGTON. IN ADDITION, SPILLS AND RELEASES OF HAZARDOUS MATERIALS GREATER THAN THE REGULATED REPORTABLE QUANTITY SHALL BE REPORTED TO STATE AND FEDERAL AUTHORITIES WITHIN 24 HOURS.

3	Δ		
4	Δ		
5	Δ		
6	Δ		
7	Δ	Revised Alignment B	10-8-10
8	Δ	Revised Alignment B Site Block	6-28-10
No.	Δ	Description	Date
Revisions			

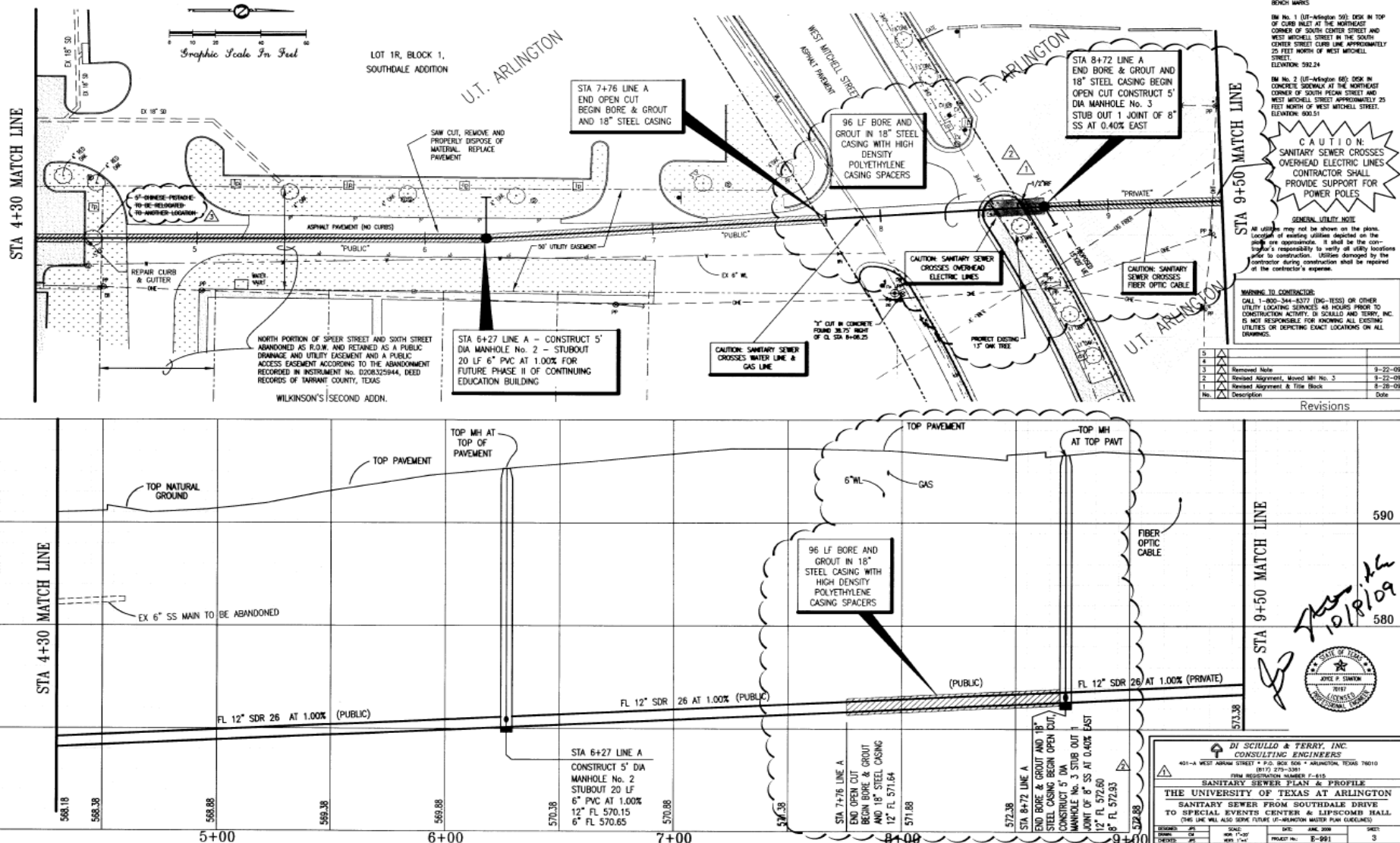
DI SCIULLO & TERRY, INC. CONSULTING ENGINEERS 401-A WEST ADELMAN STREET • P.O. BOX 604 • ARLINGTON, TEXAS 76010 (817) 278-3380 FIRM REGISTRATION NUMBER 7-615			
EROSION CONTROL PLAN THE UNIVERSITY OF TEXAS AT ARLINGTON SANITARY SEWER FROM SOUTHDAL DRIVE TO SPECIAL EVENTS CENTER & LIPSCOMB HALL (THIS PLAN WILL ALSO BECOME PART OF THE UT-ARLINGTON MASTER PLAN CHARGES)			
DESIGNED BY	DATE	DATE	DATE
CHECKED BY	11-14-09	08-2008	08-2008
PROJECT NO.	E-001		8



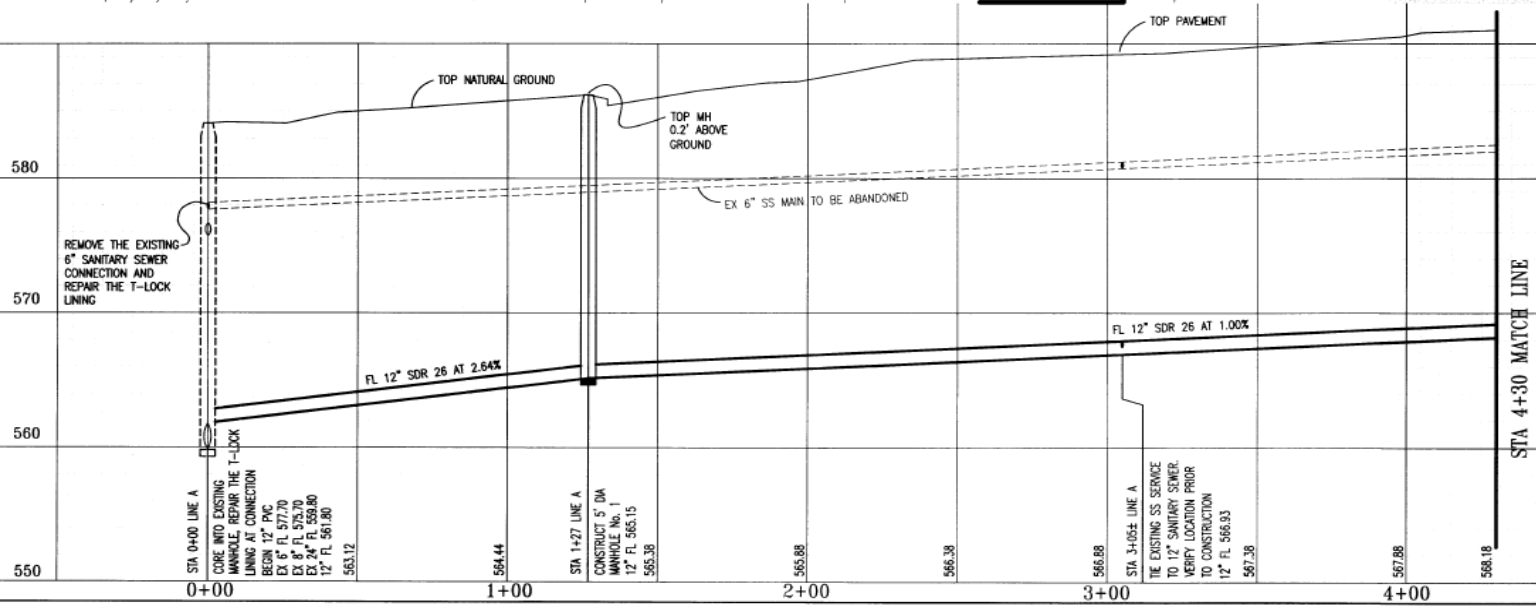
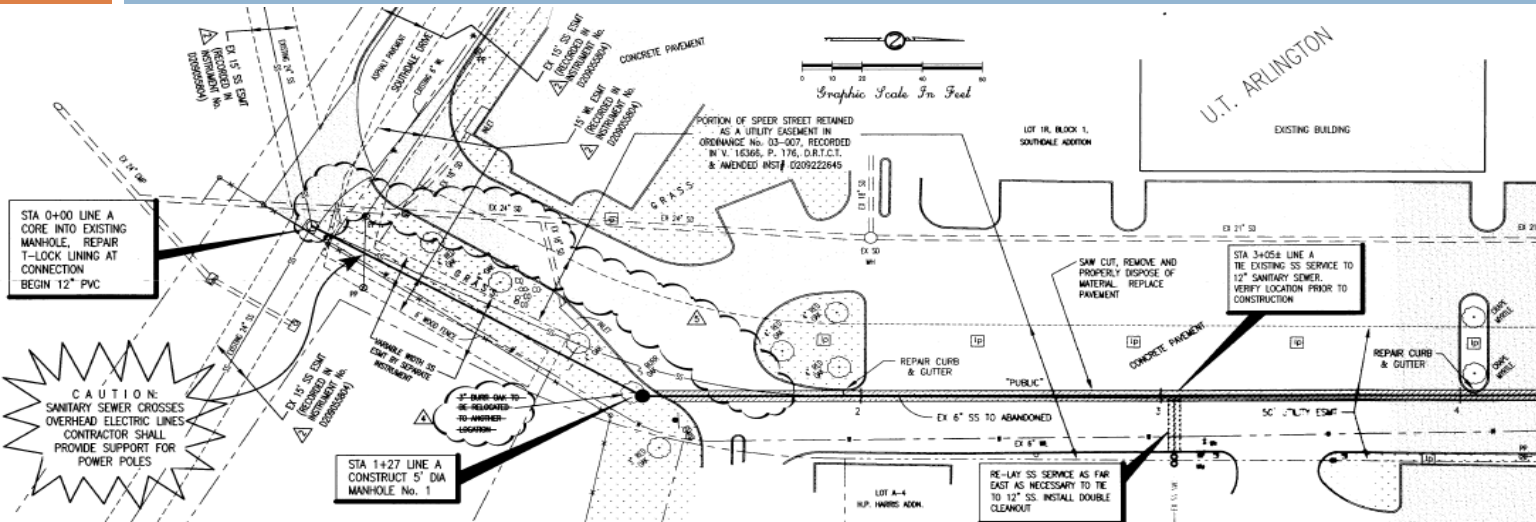
College Park Center



College Park Center



College Park Center



No.	Description	Date
1	Removed Alternate B	10-8-09
2	Removed Note	8-22-09
3	Revised Title Block	8-28-09
4	City comments-added water assessment & recording data	8-13-09
5	Removed Manhole No. 1, Revised 12" Flowline	7-29-09

WARNING TO CONTRACTOR:
CALL 1-800-344-8377 (800-TESIS) OR OTHER UTILITY LOCATING SERVICES 48 HOURS PRIOR TO CONSTRUCTION ACTIVITY. DI SCIULLO & TERRY, INC. IS NOT RESPONSIBLE FOR FINDING ALL EXISTING UTILITIES OR DEPICTING EXACT LOCATIONS ON ALL DRAWINGS.

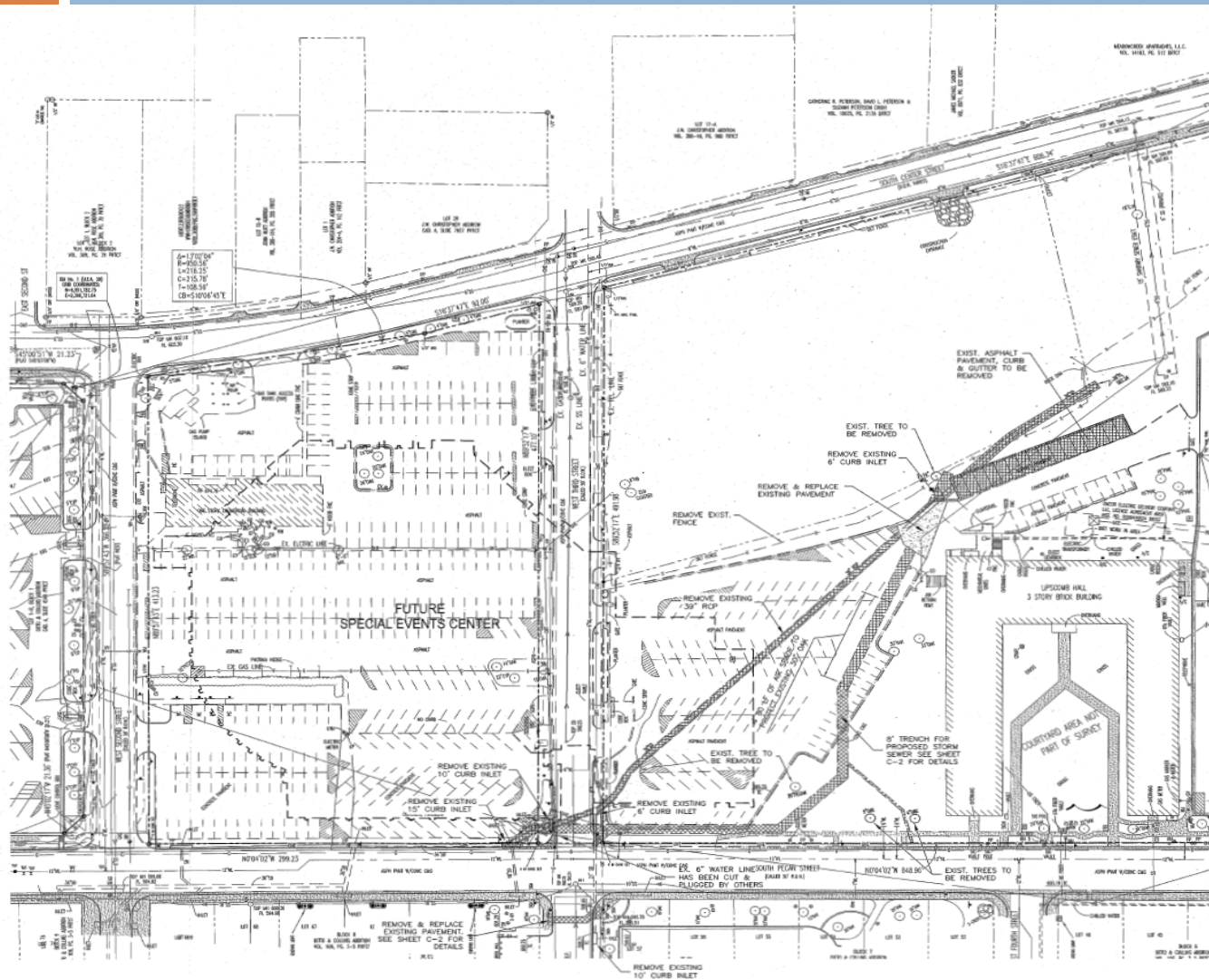
GENERAL UTILITY NOTE:
All utilities may not be shown on the plans. Location of existing utilities depicted on the plans are approximate. It shall be the contractor's responsibility to verify all utility locations prior to construction. Utilities damaged by the contractor during construction shall be repaired at the contractor's expense.

BENCH MARKS:
BM No. 1 (Off-Arlington St.) DISK IN TOP OF CURB INLET AT THE NORTHEAST CORNER OF SOUTH CENTER STREET AND WEST MITCHELL STREET IN THE SOUTH CENTER STREET CURB LINE APPROXIMATELY 25 FEET NORTH OF WEST MITCHELL STREET. ELEVATION 562.24
BM No. 2 (Off-Arlington St.) DISK IN CONCRETE SIDEWALK AT THE NORTHEAST CORNER OF SOUTH PEARL STREET AND WEST MITCHELL STREET APPROXIMATELY 25 FEET NORTH OF WEST MITCHELL STREET. ELEVATION 600.51

Handwritten: 10/8/09
Signature: [Signature]
DI SCIULLO & TERRY, INC.
401-A WEST ARLINGTON STREET, P.O. BOX 504 • ARLINGTON, TEXAS 76010
(817) 235-3481
FIRM REGISTRATION NUMBER E-515
STATE OF TEXAS
70107
DI SCIULLO & TERRY, INC.
CONSULTING ENGINEERS

DI SCIULLO & TERRY, INC. CONSULTING ENGINEERS 401-A WEST ARLINGTON STREET, P.O. BOX 504 • ARLINGTON, TEXAS 76010 (817) 235-3481 FIRM REGISTRATION NUMBER E-515	
SANITARY SEWER PLAN & PROFILE THE UNIVERSITY OF TEXAS AT ARLINGTON SANITARY SEWER FROM SOUTHWEST DRIVE TO SPECTRAL EVENTS CENTER & LEPPICOMBER HALL (THIS LINE WILL ALSO SHOW FUTURE UT-ARLINGTON WATER PLAN GUIDELINES)	
DESIGNED: JTS DRAWN: JTS CHECKED: JTS	DATE: APR. 2008 PROJECT NO.: E-991 SHEET: 22A

College Park Center



Demolition Plan Notes

3. THE CONTRACTOR IS RESPONSIBLE FOR VERIFYING THE LOCATION OF ALL UNDERGROUND UTILITIES WITHIN THE AREA OF CONSTRUCTION.
4. IT WILL BE THE RESPONSIBILITY OF THE CONTRACTOR TO PROTECT ALL MANHOLES, CLEANOUTS, VALVE BOXES, FIRE HYDRANTS, ETC. WITHIN THE AREA OF CONSTRUCTION.
5. ALL TRAFFIC CONTROL MEASURES, BARRICADES AND PROJECT SIGNS WITHIN THE PUBLIC RIGHT-OF-WAY SHALL CONFORM TO THE REQUIREMENTS OF THE CALIFORNIA HIGHWAY & TRANSFORM TRAFFIC CONTROL DEVICES AND THE LOCAL GOVERNING AGENCY REQUIREMENTS.
6. THE CONTRACTOR SHALL PROTECT ALL ADJACENT ON AND OFF-SITE PAVING, UTILITIES, TREES AND OTHER EXISTING IMPROVEMENTS FROM DAMAGE. ANY DAMAGE SHALL BE REPAIRED AT THE CONTRACTOR'S EXPENSE.

CAUTION!!!
EXISTING UNDERGROUND
UTILITIES IN AREA. CONTRACTOR SHALL
DETERMINE THE EXACT LOCATION
OF ALL EXISTING UTILITIES PRIOR
TO CONSTRUCTION

BENCH MARKS:-

BM #1 (UTA 39)
DISK SET IN CONCRETE APPROXIMATELY 15 FEET WEST
OF THE WEST CURB LINE OF SOUTH CENTER STREET AND
15.5 FEET NORTH OF THE NORTH CURB LINE OF WEST
SECOND STREET.
N 6951782.75 E 2396721.64 ELEVATION = 609.01

BM #4 (UTA 59)
DISK IN TOP OF CURB INLET AT THE NORTHEAST CORNER
OF SOUTH CENTER STREET AND WEST MITCHELL STREET
IN THE SOUTH CENTER CURB LINE APPROXIMATELY 25
FEET NORTH OF WEST MITCHELL STREET.
N 6950800.64 E 2397029.69 ELEVATION = 592.24

Regulation:



MASTER-QUINTANILLA DALLAS, LLP
ENGINEERS
CONSULTING
SUITE 300 • DALLAS, TX 75201
FAX 214 762-4771



Date: 3/03/10

Project No.
4090606

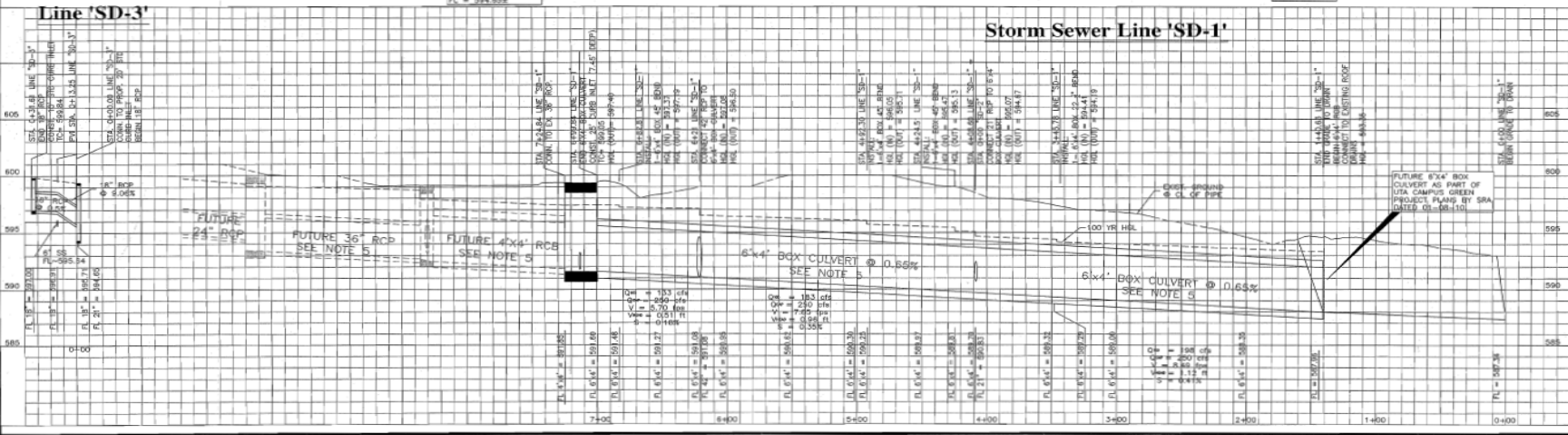
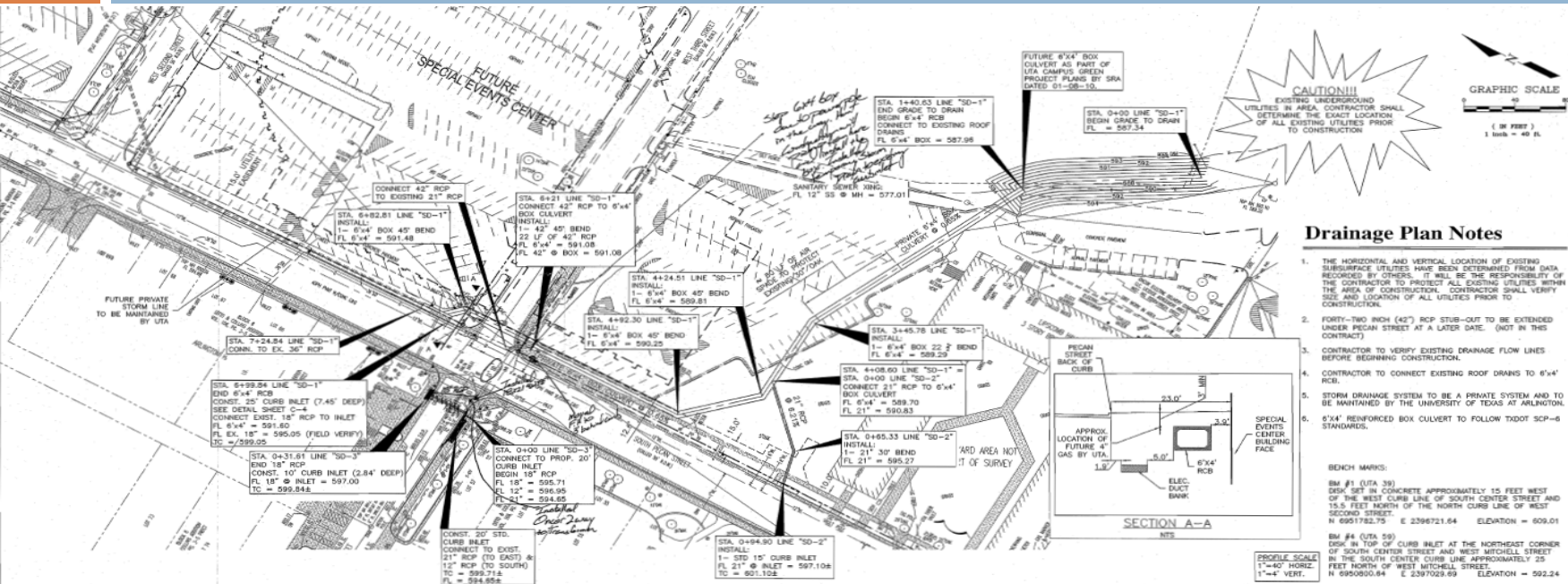
Sheet Title:
DEMOLITION

Drawing No.

C 1

C-1

College Park Center

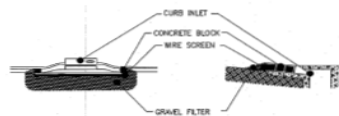
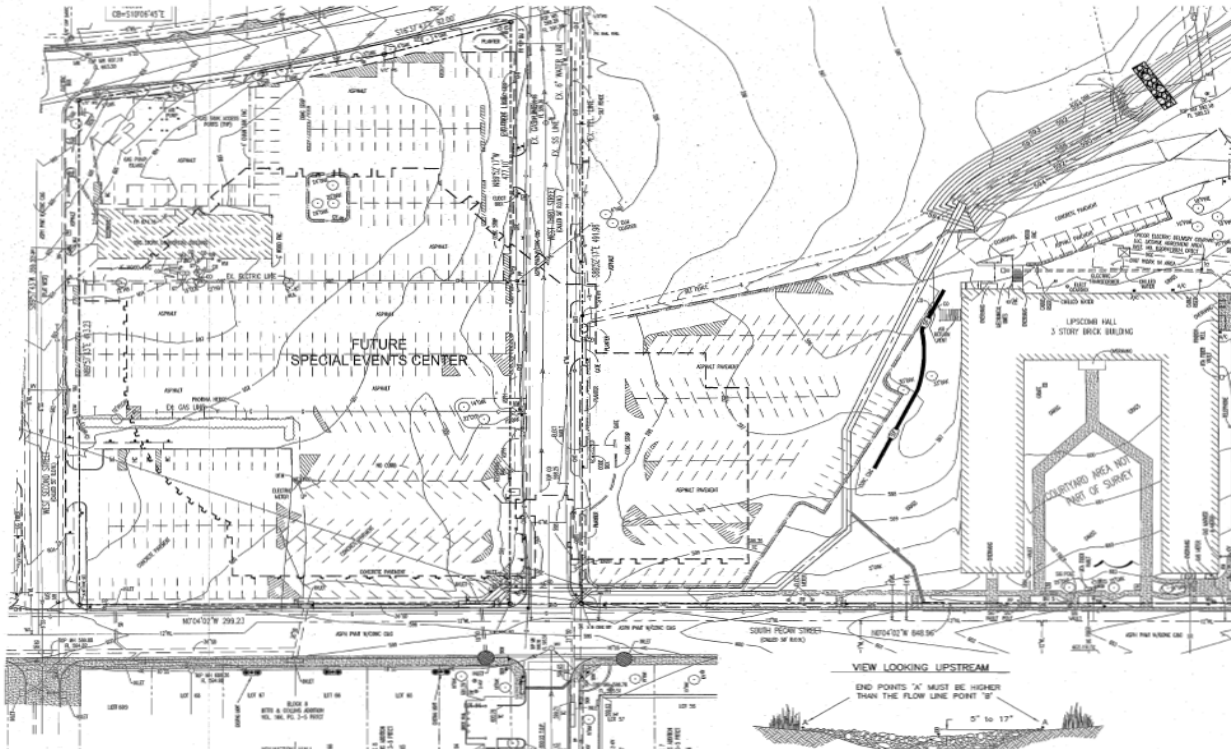


Revisions:

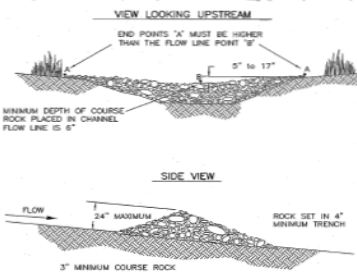
ASTOR QUINTERIA DALLAS LLP
CONSULTING ENGINEERS
2108 COMMERCE • SUITE 200 • DALLAS, TX 75201
TYPE 602 NO. 1284
P.O. BOX NO. 400606

Date: 2/02/10
Project No: 4090606
Sheet Title: DRAINAGE PLAN
Drawing No: C-2

College Park Center

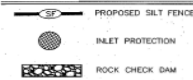


01 CURB INLET PROTECTION
N.T.S.



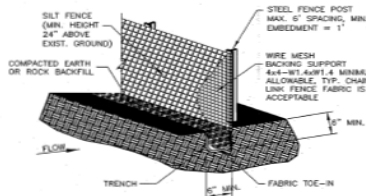
02 ROCK CHECK DAM
N.T.S.

Erosion Control Legend



Erosion Control Notes

1. THE CONTRACTOR SHALL COMPLY WITH FEDERAL, STATE AND LOCAL REGULATIONS REGARDING STORM WATER DISCHARGE AND EROSION AND SEDIMENT CONTROL.
2. EROSION CONTROL MEASURES MUST BE IN PLACE BEFORE BEGINNING SOIL DISTURBING ACTIVITIES.



ISOMETRIC PLAN VIEW

SILT FENCE GENERAL NOTES

1. STEEL POSTS WHICH SUPPORT THE SILT FENCE SHALL BE INSTALLED ON A SLIGHT ANGLE TOWARD THE ANTICIPATED RUNOFF SOURCE. POST MUST BE EMBEDDED A MINIMUM OF ONE FOOT.
2. THE TOE OF THE SILT FENCE SHALL BE TRENCHED IN WITH A SPARK OR MECHANICAL TRENCHER, SO THAT THE DOWNSLOPE FACE OF THE TRENCH IS FLAT AND PERPENDICULAR TO THE LINE OF FLOW. WHERE FENCE CANNOT BE TRENCHED IN (e.g. PAVEMENT), WEIGHT FABRIC FLAP WITH ROCK OR UPSHILL SIDE TO PREVENT FLOW FROM SEEPING UNDER FENCE.
3. THE TRENCH MUST BE A MINIMUM OF 6 INCHES DEEP AND 6 INCHES WIDE TO ALLOW FOR THE SILT FENCE FABRIC TO BE LAD IN THE GROUND AND BACKFILLED WITH COMPACTED MATERIAL.
4. SILT FENCE SHOULD BE SECURELY FASTENED TO EACH STEEL SUPPORT POST OR TO WOVEN WIRE, WHICH IN TURN IS ATTACHED TO THE STEEL FENCE POST. THERE SHALL BE A 3 FOOT OVERLAP, SECURELY FASTENED WHERE ENDS OF FABRIC MEET.
5. INSPECTION SHALL BE MADE EVERY TWO WEEKS AND AFTER EACH 1/2" RAINFALL. REPAIR OR REPLACEMENT SHALL BE MADE PROMPTLY AS NEEDED.
6. SILT FENCE SHALL BE REMOVED WHEN THE SITE IS COMPLETELY STABILIZED SO AS NOT TO BLOCK OR IMPEDE STORM FLOW OR DRAINAGE.
7. ACCUMULATED SILT SHALL BE REMOVED WHEN IT REACHES A DEPTH OF HALF THE HEIGHT OF THE FENCE. THE SILT SHALL BE DISPOSED OF AT AN APPROVED SITE AND IN SUCH A MANNER AS TO NOT CONTRIBUTE TO ADDITIONAL SILTATION.

03 SILT FENCE INSTALLATION
N.T.S.

Revisions:

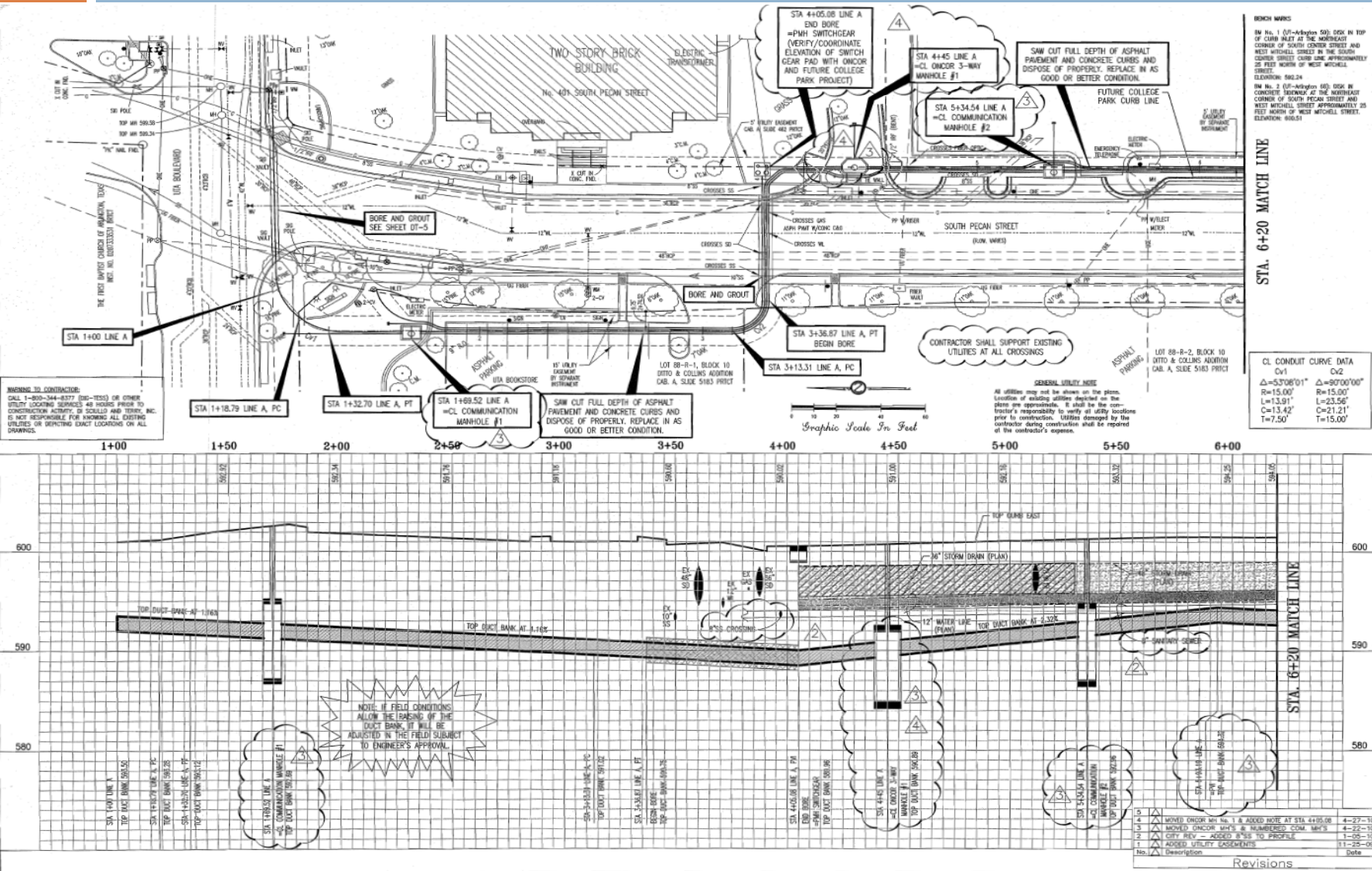


JESTER QUINTANILLA DALLAS LLP
2105 COMMERCE • SUITE 200 • DALLAS, TX 75201
214-763-3289 • FAX 214-763-6771
P-C JOB NO.: 1234 • 4090606



Date: 2/02/10
Project No.: 4090606
Sheet Title: EROSION CONTROL PLAN
Drawing No.

College Park Center



DI SCULLO & TERRY, INC.
CONSULTING ENGINEERS
4814 WEST ARAM STREET
ARLINGTON, TEXAS 76010
TEL: 817-275-8800
FAX: 817-275-8800
FIRM REGISTRATION NUMBER 1-415

SOUTH PECAN STREET
OVERHEAD UTILITY RELOCATION
ELECTRICAL & COMMUNICATION DUCT PROFILE
(STA 1+00 TO STA 6+20)



DT # E-1000
DATE: 11-25-2009
DRWN BY: CM
RVD BY: JPS

SHEET:
DT-1



SOUTH PECAN STREET
OVERHEAD UTILITY RELOCATION
ELECTRICAL & COMMUNICATION DUCT PROFILE
(STA 6+20 TO STA 10+50)



DT #: E-1000
DATE: 11-25-2009
DRWN BY: CM
RVD BY: JPS

SHEET:
DT-2

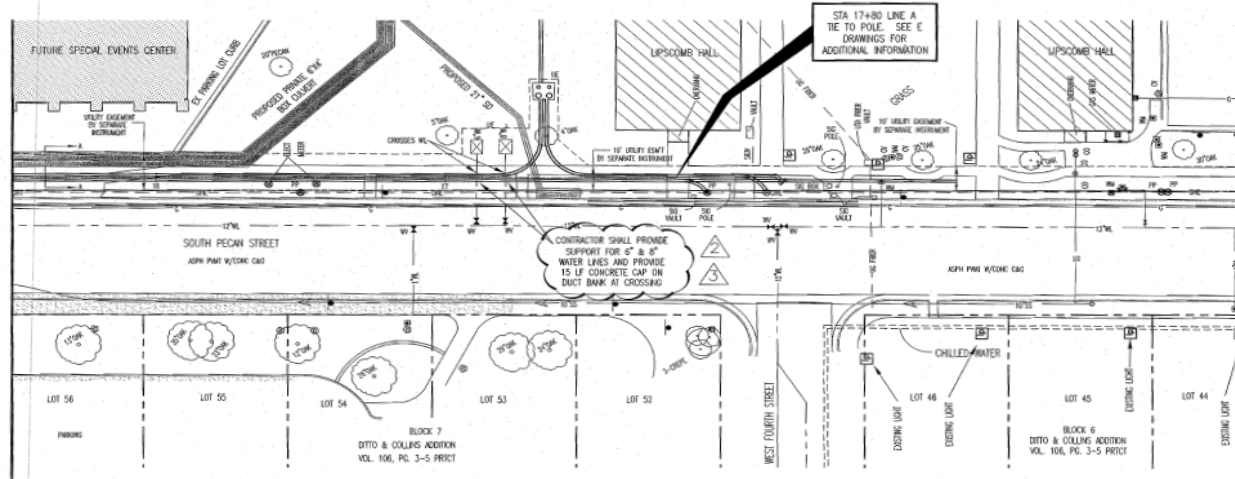
College Park Center

WARNING TO CONTRACTOR:
CALL 1-800-344-5277 (D-C-TEST) OR OTHER
UTILITY LOCATING SERVICE 48 HOURS PRIOR TO
CONSTRUCTION ACTIVITY. DI SCULLO AND TERRY, INC.
IS NOT RESPONSIBLE FOR KNOWING ALL EXISTING
UTILITIES OR DEPICTING EXACT LOCATIONS ON ALL
DRAWINGS.

GENERAL UTILITY NOTE

All utilities may not be shown on the plans.
Location of existing utilities depicted on the
plans are approximate. It shall be the
contractor's responsibility to verify all utility locations
prior to construction. Utilities damaged by the
contractor during construction shall be repaired
at the contractor's expense.

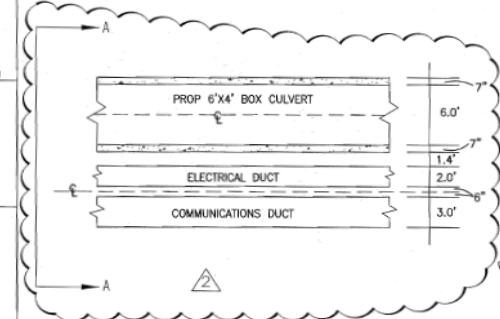
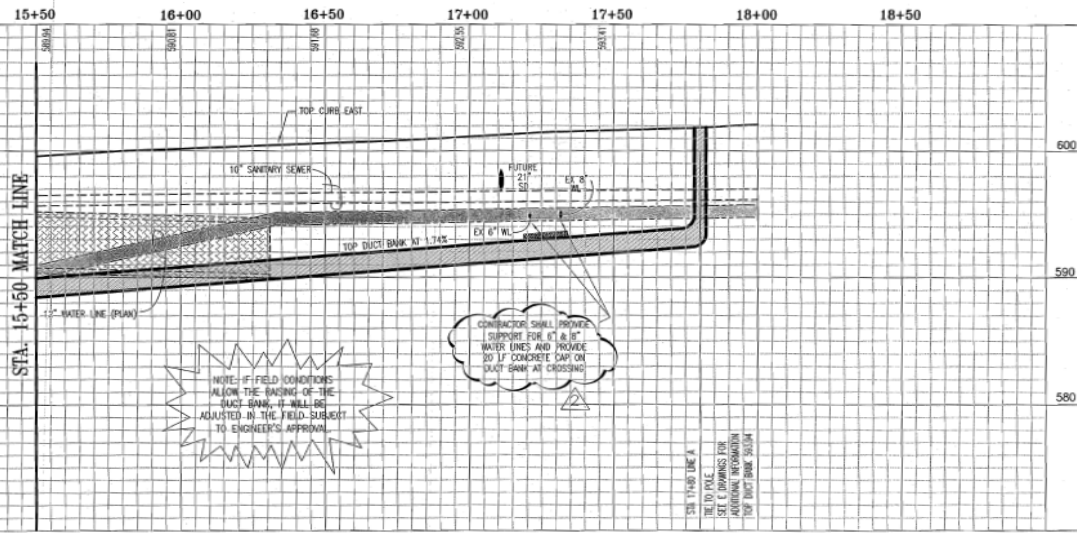
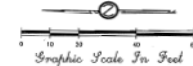
STA. 15+50 MATCH LINE



BEACH MARKS

BM No. 1 (UT-Arlington 001) DSK IN TOP
OF CURB INLET AT THE INTERSECTION
CORNER OF SOUTH CENTER STREET AND
WEST MICHELL STREET IN THE SOUTH-
CENTER STREET CURB LINE APPROXIMATELY
25 FEET NORTH OF WEST MICHELL
STREET.
ELEVATION: 940.24
BM No. 2 (UT-Arlington 002) DSK IN
CONCRETE SIDEWALK AT THE NORTHEAST
CORNER OF SOUTH ARROW STREET AND
WEST MICHELL STREET APPROXIMATELY 25
FEET NORTH OF WEST MICHELL STREET.
ELEVATION: 940.51

CONTRACTOR SHALL SUPPORT EXISTING
UTILITIES AT ALL CROSSINGS



DI SCULLO & TERRY, INC.
CONSULTING ENGINEERS
401-A WEST ARROW STREET
ARLINGTON, TEXAS 76010
TEL: 817-275-5361
FAX: 817-275-8620
FIRM REGISTRATION NUMBER F-413

**SOUTH PECAN STREET
OVERHEAD UTILITY RELOCATION
ELECTRICAL & COMMUNICATION DUCT PROFILE
(STA 15+50 TO STA 17+80)**



DT #: E-1000
DATE: 11-25-2009
DRWN BY: CM
RVD BY: JPS

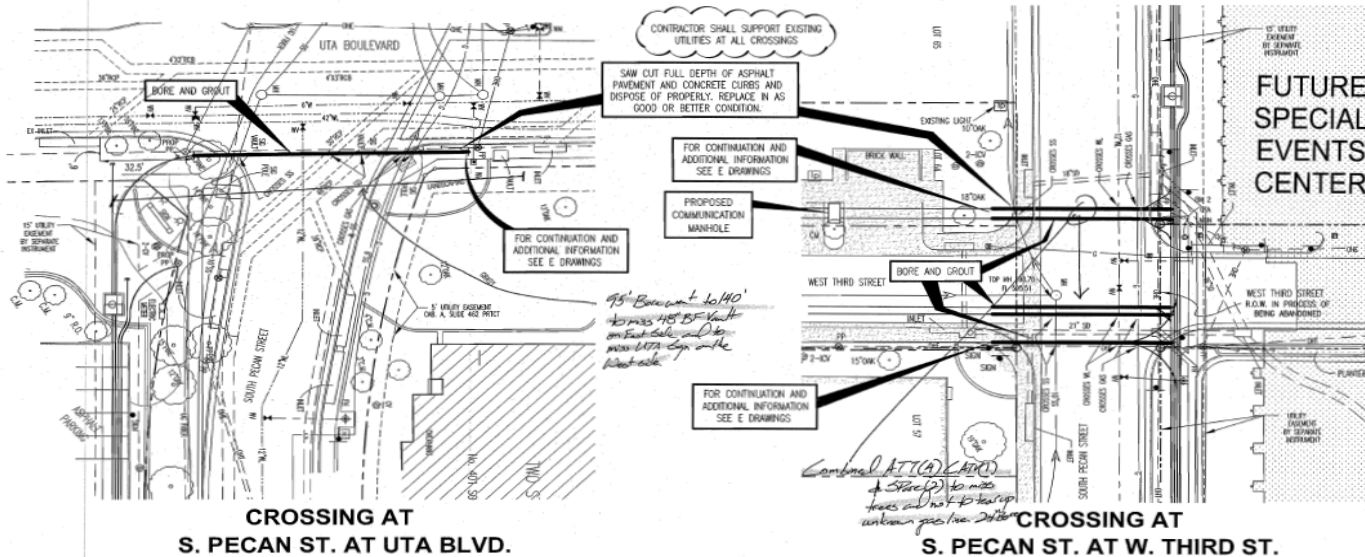
SHEET:
DT-4

No.	Description	Date
3	1. CITY REV - WL SUPPORT AT CROSSING & SECTION A-A	1-09-10
2	1. ADDED UTILITY & DRAINAGE EASEMENTS	11-25-09
1		

Revisions

College Park Center

BENCH MARKS
 BM No. 1 (UT-Admission 885) DICK IN TOP
 OF CURB INLET AT THE NORTHWEST
 CORNER OF SOUTH CENTER STREET AND
 WEST MICHAEL STREET IN THE SOUTH
 CENTER STREET CURB LINE APPROXIMATELY
 25 FEET NORTH OF WEST MICHAEL
 STREET.
 ELEVATION 582.24
 BM No. 2 (UT-Admission 885) DICK IN
 CONCRETE SIDEWALK AT THE NORTHWEST
 CORNER OF SOUTH PECAN STREET AND
 WEST MICHAEL STREET APPROXIMATELY 25
 FEET NORTH OF WEST MICHAEL STREET.
 ELEVATION 600.51



WARNING TO CONTRACTOR:
 CALL 1-800-244-8377 (ENG-TECS) OR OTHER
 UTILITY LOCATING SERVICES 48 HOURS PRIOR TO
 CONSTRUCTION ACTIVITY. IN SULLIVAN AND TERRY, INC.
 IS NOT RESPONSIBLE FOR HARMING ALL EXISTING
 UTILITIES OR DEFECTING EXACT LOCATIONS ON ALL
 DRAWINGS.

GENERAL UTILITY NOTE:
 All utilities may not be shown on the plans.
 Location of existing utilities indicated on the
 plans are approximate. It shall be the contractor's
 responsibility to verify all utility locations
 prior to construction. Utilities damaged by the
 contractor during construction shall be repaired
 at the contractor's expense.



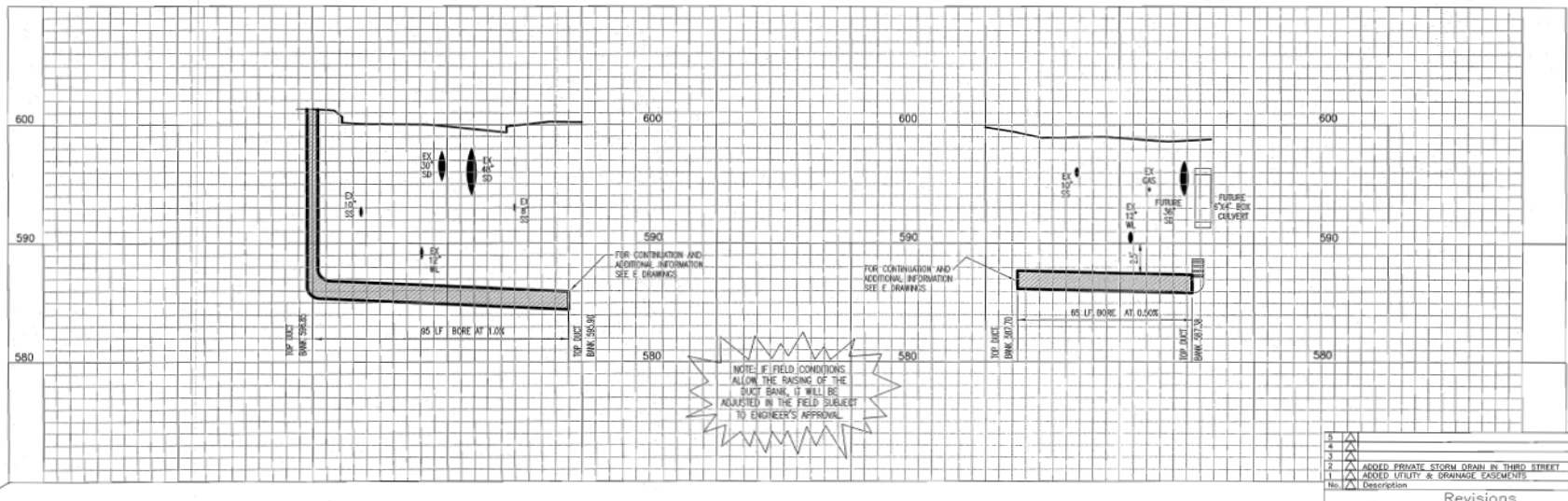
SULLIVAN & TERRY, INC.
 CONSULTING ENGINEERS
 401-A WEST ARROW STREET
 ARLINGTON, TEXAS 76010
 TEL: 817-275-2800
 FAX: 817-275-2800
 FIRM REGISTRATION NUMBER F-413

**SOUTH PECAN STREET
 OVERHEAD UTILITY RELOCATION
 ELECTRICAL & COMMUNICATION DUCT PROFILE
 (INTERSECTION CROSSINGS)**

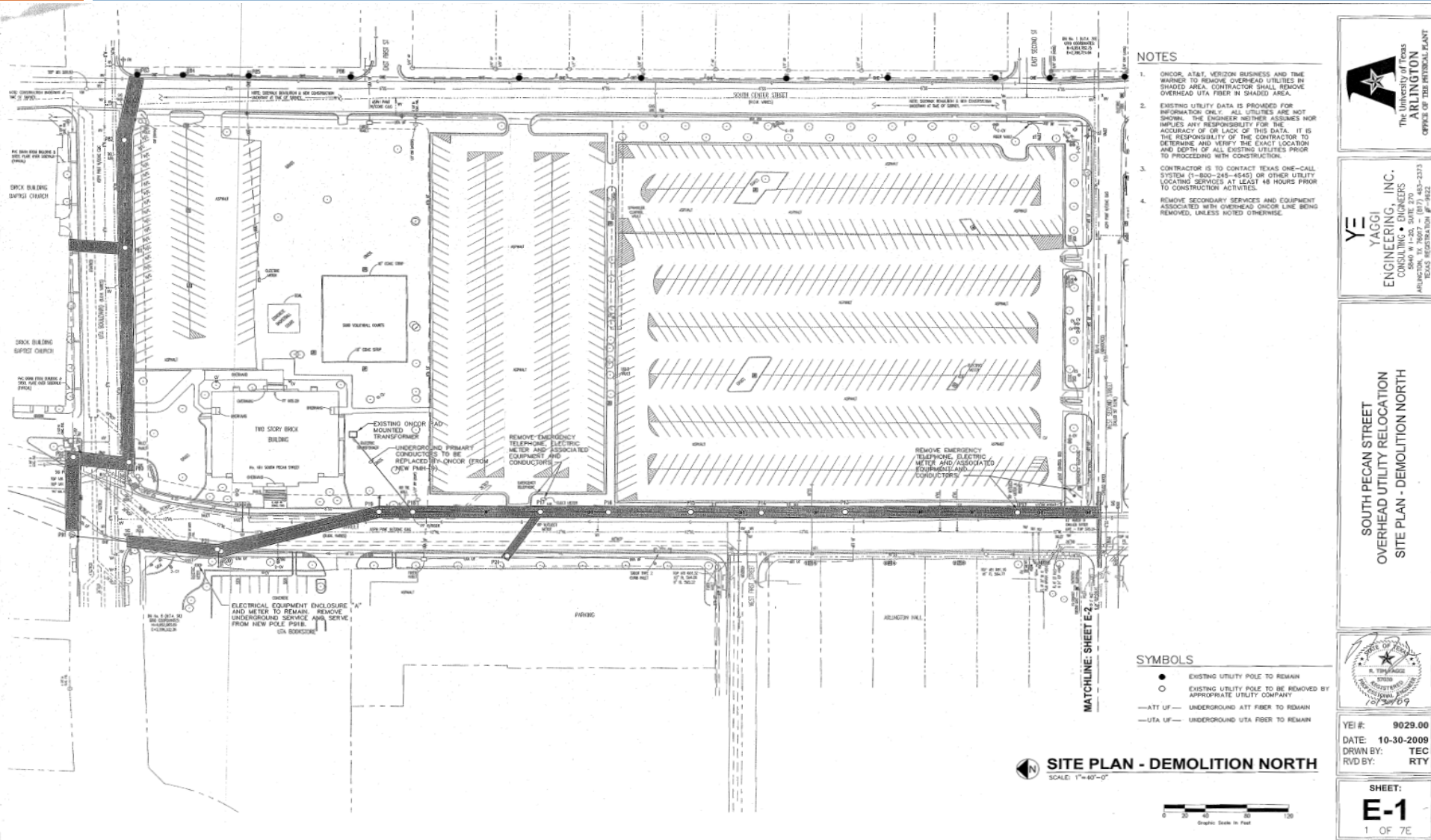


DT #: E-1000
 DATE: 11-25-2009
 DRAWN BY: CM
 RVD BY: JPS

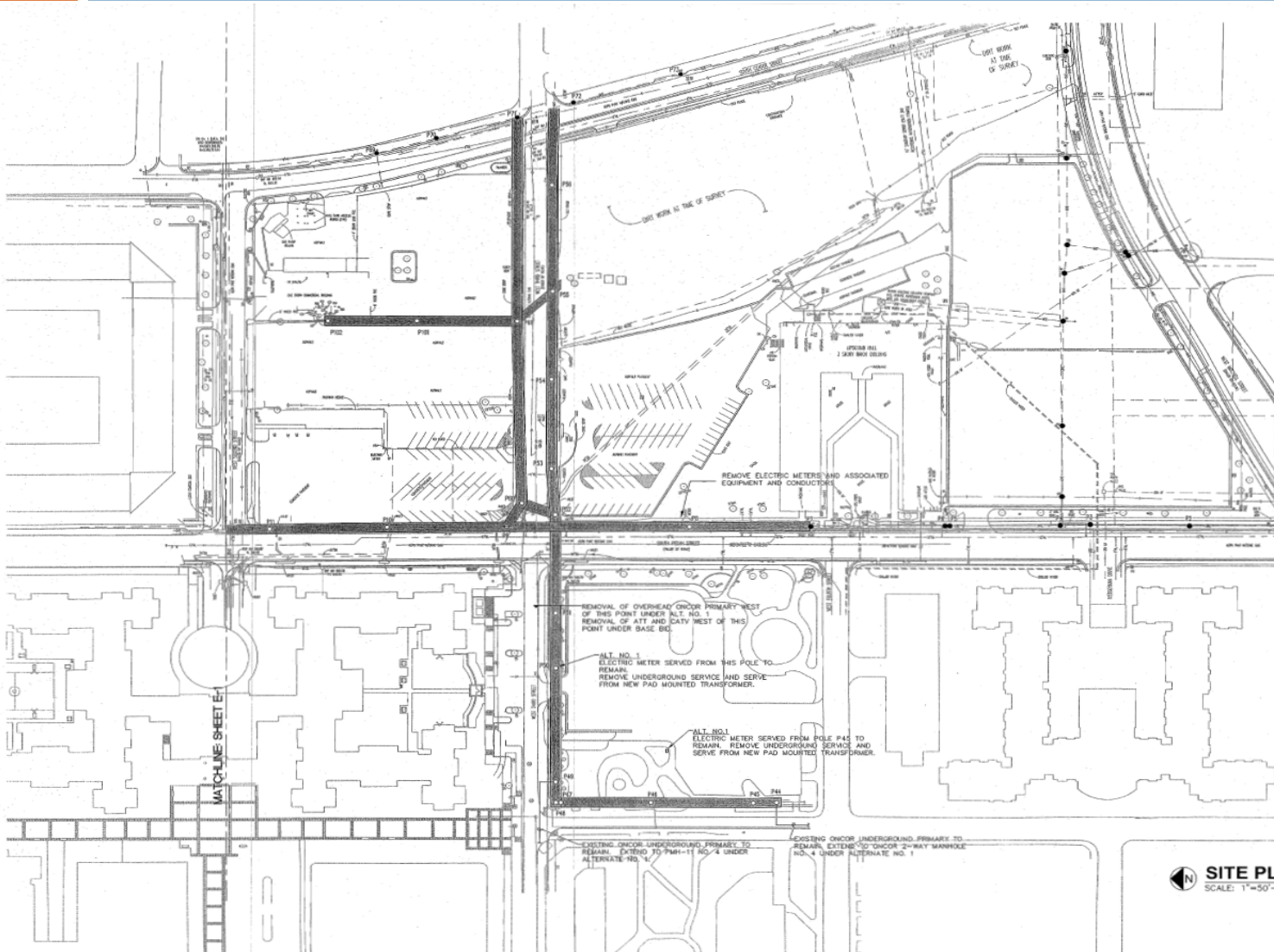
SHEET:
DT-5



College Park Center



College Park Center



NOTES

1. ONCOR, AT&T, VERIZON BUSINESS AND TIME WARNER TO REMOVE OVERHEAD UTILITIES IN SHADED AREA. CONTRACTOR SHALL REMOVE OVERHEAD UTA FIBER IN SHADED AREA.
2. EXISTING UTILITY DATA IS PROVIDED FOR INFORMATION ONLY. ALL UTILITIES ARE NOT SHOWN. THE ENGINEER NEITHER ASSUMES NOR IMPLIES ANY RESPONSIBILITY FOR THE ACCURACY OF OR LACK OF THIS DATA. IT IS THE RESPONSIBILITY OF THE CONTRACTOR TO DETERMINE AND VERIFY THE EXACT LOCATION AND DEPTH OF ALL EXISTING UTILITIES PRIOR TO PROCEEDING WITH CONSTRUCTION.
3. CONTRACTOR IS TO CONTACT TEXAS ONE-CALL SYSTEM (1-800-245-4545) OR OTHER UTILITY LOCATING SERVICES AT LEAST 48 HOURS PRIOR TO CONSTRUCTION ACTIVITIES.
4. REMOVE SECONDARY SERVICES AND EQUIPMENT ASSOCIATED WITH OVERHEAD ONCOR LINE BEING REMOVED, UNLESS NOTED OTHERWISE.

SYMBOLS

- EXISTING UTILITY POLE TO REMAIN
- EXISTING UTILITY POLE TO BE REMOVED BY APPROPRIATE UTILITY COMPANY.
- ATT UF— UNDERGROUND ATT FIBER TO REMAIN
- UTA UF— UNDERGROUND UTA FIBER TO REMAIN

SITE PLAN - DEMOLITION SOUTH
SCALE: 1"=50'-0"



YAGGI ENGINEERING, INC.
CORPORATE OFFICE
ARLINGTON, TX 76010
TELEPHONE: (817) 483-2333
FAX: (817) 483-2333
TEXAS REGISTRATION # 9022

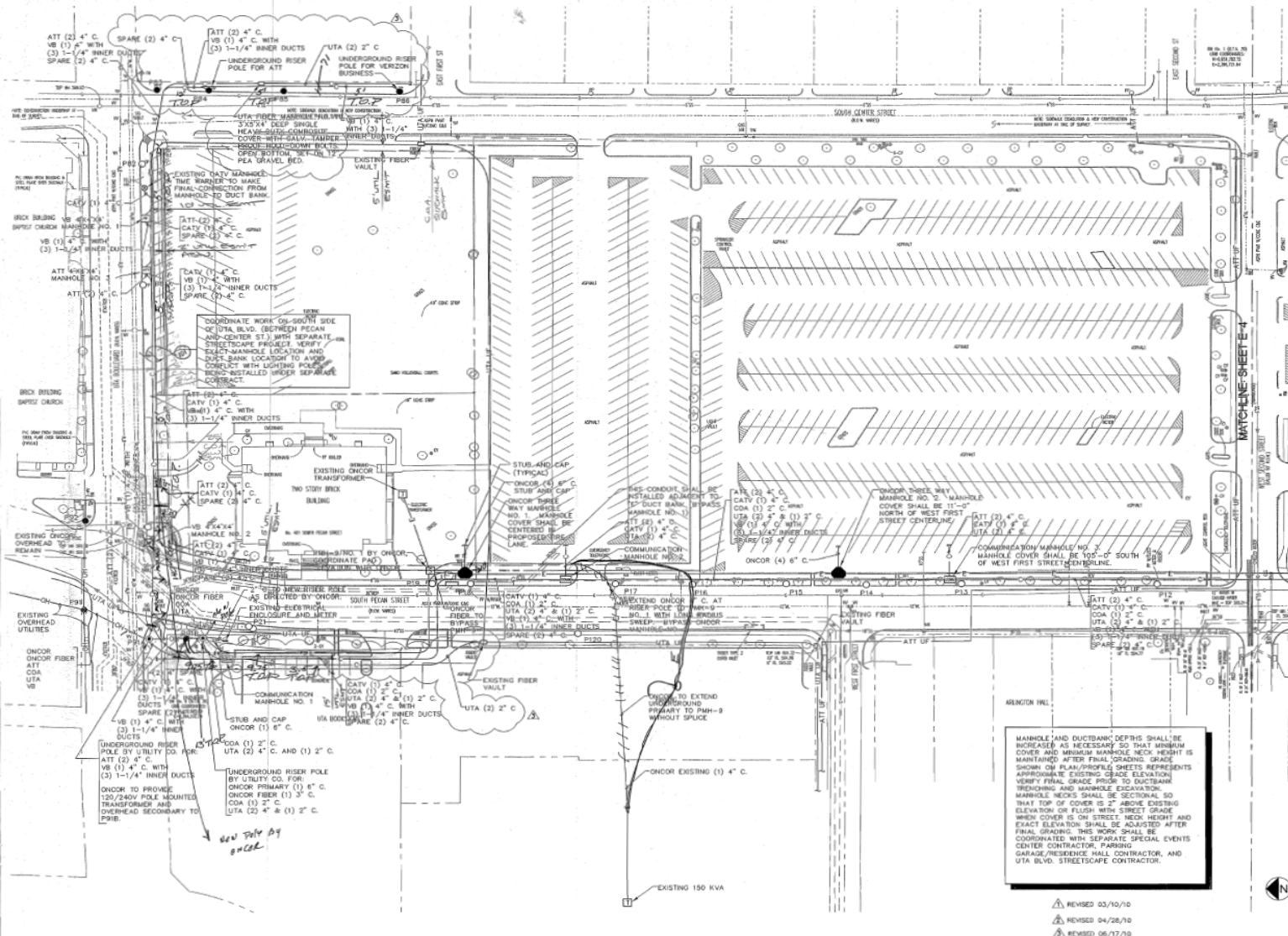
SOUTH PECAN STREET
OVERHEAD UTILITY RELOCATION
SITE PLAN - DEMOLITION SOUTH



YEI #: 9029.00
DATE: 10-30-2009
DRAWN BY: TEC
RVD BY: RTY

SHEET:
E-2
2 OF 7E

College Park Center



NOTES

- EXISTING UTILITY DATA IS PROVIDED FOR INFORMATION ONLY. ALL UTILITIES ARE NOT SHOWN. THE ENGINEER NEITHER ASSUMES NOR IMPLIES ANY RESPONSIBILITY FOR THE ACCURACY OF OR LACK OF THIS DATA. IT IS THE RESPONSIBILITY OF THE CONTRACTOR TO DETERMINE AND VERIFY THE EXACT LOCATION AND DEPTH OF ALL EXISTING UTILITIES PRIOR TO PROCEEDING WITH CONSTRUCTION.
- CONTRACTOR IS TO CONTACT TEXAS ONE-CALL SYSTEM (1-800-248-4540) OR OTHER UTILITY LOCATING SERVICE AT LEAST 48 HOURS PRIOR TO CONSTRUCTION ACTIVITIES.
- STREET CROSSINGS SHALL BE BORED.
- REFER TO PLAN/PROFILE SHEETS FOR ADDITIONAL INFORMATION.
- PROVIDE COMMUNICATION DUCT BANKS, ONCOR DUCT BANKS, MANHOLES, TRANSFORMER PADS AND SWITCHGEAR PADS. ONCOR, AT&T, TIME WARNER, CITY OF ARLINGTON, VERIZON BUSINESS AND UTA WILL UTILIZE THESE DUCT BANKS, MANHOLES, PADS AND INDIVIDUAL CONDUITS AS DESIGNATED. UTILITY COMPANY CABLES/CONDUCTORS AND UTA FIBER WILL BE INSTALLED UNDER SEPARATE CONTRACT.
- MINIMUM COVER ABOVE CONDUITS SHALL BE:
 - ONCOR 48"
 - AT&T 24"
 - TIME WARNER 36"
 - VERIZON BUSINESS 36"
 - UTA FIBER 36"
- MAINTAIN MINIMUM 12" SEPARATION BETWEEN COMMUNICATION CONDUITS AND ONCOR CONDUITS.
- CONDUITS SHALL TERMINATE AT RISER POLES, MANHOLES, TRANSFORMERS AND PADS. SWITCHGEAR IN ACCORDANCE WITH UTILITY COMPANY SPECIFICATIONS.
- CONDUITS SHALL BE SCHEDULE 40 PVC. ALL 90° SHALL BE LONG RADIUS BENDS.
- PROVIDE CABLE IDENTIFICATION WARNING TAPE 12" BELOW GRADE, ENTIRE WIDTH OF DUCT BANKS.
- CAP CONDUITS STUBBED OUT AND PLUGS USED AND SPARE MANHOLE CONDUIT TERMINATIONS.
- STAKE AND MARK LOCATIONS OF DUCT BANKS, MANHOLES AND EQUIPMENT FOR UTILITY COMPANY REVIEW AND APPROVAL PRIOR TO EXCAVATION.
- WORK SHALL BE PHASED AS DIRECTED BY OWNER AND UTILITY COMPANIES.
- PROVIDE AND MAINTAIN SWPPP.
- ALL PAVING, LANDSCAPING, IRRIGATION, ETC. SHALL BE RESTORED TO EXISTING CONDITION.
- PROVIDE LINK LOCATION MARKERS AS REQUIRED BY EACH UTILITY COMPANY.

SYMBOLS

- | | |
|---------------|--|
| ATT | AT&T |
| ATT UF | EXISTING AT&T UNDERGROUND FIBER |
| CATV | TIME WARNER CABLE |
| CATV (1) 4" C | CITY OF ARLINGTON |
| UTA | UNIVERSITY OF TEXAS ARLINGTON |
| UTA UF | EXISTING UTA UNDERGROUND FIBER |
| VB | VERIZON BUSINESS |
| E | ONCOR DUCT BANK (2) 6" C. AND (1) 3" C. UNLESS OTHERWISE NOTED |
| C | COMMUNICATION DUCT BANK (CONDUITS AS NOTED) |
| ● | UTILITY POLE TO BE INSTALLED BY APPROPRIATE UTILITY COMPANY |
| ○ | EXISTING UTILITY POLE TO REMAIN |
| ○ | EXISTING UTILITY POLE BEING REMOVED |
| ● | ONCOR THREE WAY MANHOLE |
| ● | ONCOR PWR SWITCHGEAR |
| ■ | ONCOR PAD MOUNTED TRANSFORMER |
| ■ | COMMUNICATION MANHOLE, 4'x8'x6' |
| ■ | VERIZON BUSINESS MANHOLE, 4'x4'x4' |
| ■ | ATT MANHOLE, 4'x8'x6' UNLESS NOTED OTHERWISE |

SITE PLAN - NORTH
SCALE: 1"=40'-0"



YAGGI ENGINEERING, INC.
CONSULTING ENGINEERS
ARLINGTON, TX 76010 - (817) 483-2373
FAX: (817) 483-2373
STATE OF TEXAS REGISTRATION # 9622

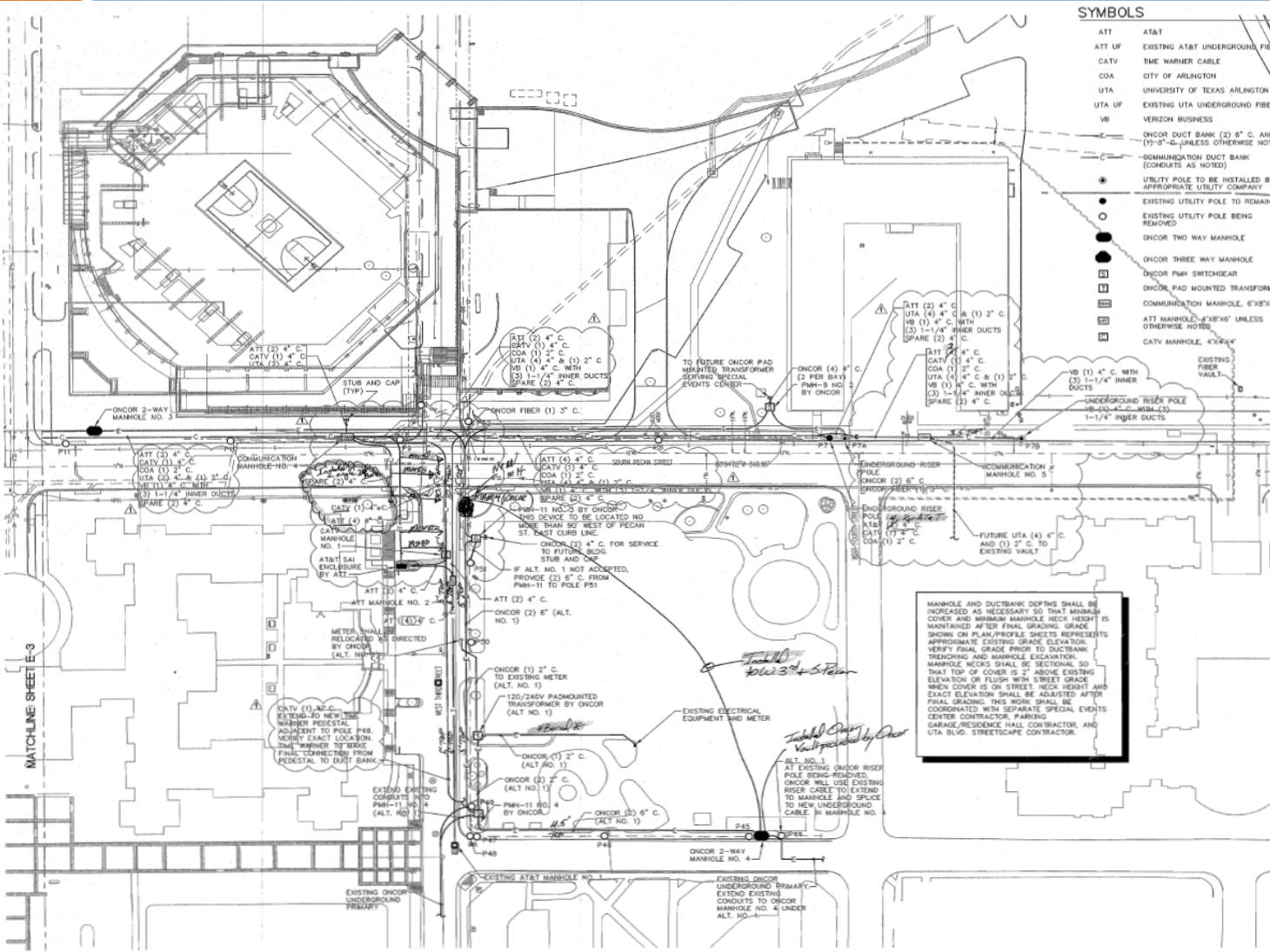
**SOUTH PECAN STREET
OVERHEAD UTILITY RELOCATION
SITE PLAN - NORTH**



YES# 9029.00
DATE: 10-30-2009
DRWN BY: TEC
RVD BY: RTY

SHEET:
E-3
3 OF 7E

College Park Center



SYMBOLS

ATT	AT&T
ATT UF	EXISTING AT&T UNDERGROUND FIBER
CATV	TIME WARNER CABLE
COA	CITY OF ARLINGTON
UTA	UNIVERSITY OF TEXAS ARLINGTON
VB	VERIZON BUSINESS
	ONCOR DUCT BANK (2) 6" C. AND (1) 3" C. UNLESS OTHERWISE NOTED
	COMMUNICATION DUCT BANK (CONDUITS AS NOTED)
	UTILITY POLE TO BE INSTALLED BY APPROPRIATE UTILITY COMPANY
	EXISTING UTILITY POLE TO REMAIN
	EXISTING UTILITY POLE BEING REMOVED
	ONCOR TWO WAY MANHOLE
	ONCOR THREE WAY MANHOLE
	ONCOR PMH SWITCHGEAR
	ONCOR PAD MOUNTED TRANSFORMER
	COMMUNICATION MANHOLE, 6'X8'X6'
	ATT MANHOLE, 4'X6'X6' UNLESS OTHERWISE NOTED
	CATV MANHOLE, 4'X6'X6'

NOTES

- EXISTING UTILITY DATA IS PROVIDED FOR INFORMATION ONLY. ALL UTILITIES ARE NOT SHOWN. THE ENGINEER NEITHER ASSURES NOR IMPLIES ANY RESPONSIBILITY FOR THE ACCURACY OF OR LACK OF THIS DATA. IT IS THE RESPONSIBILITY OF THE CONTRACTOR TO DETERMINE AND VERIFY THE EXACT LOCATION AND DEPTH OF ALL EXISTING UTILITIES PRIOR TO PROCEEDING WITH CONSTRUCTION.
- CONTRACTOR IS TO CONTACT TEXAS ONE-CALL SYSTEM (1-800-245-4545) OR OTHER UTILITY LOCATING SERVICE AT LEAST 48 HOURS PRIOR TO CONSTRUCTION ACTIVITIES.
- STREET CROSSINGS SHALL BE BORED, EXCEPT WEST THIRD STREET.
- REFER TO PLAN/PROFILE SHEETS FOR ADDITIONAL INFORMATION.
- PROVIDE COMMUNICATION DUCT BANKS, ONCOR DUCT BANKS, MANHOLES, TRANSFORMER PADS AND SWITCHGEAR PADS, ONCOR, AT&T, TIME WARNER, CITY OF ARLINGTON, VERIZON BUSINESS AND UTA WILL UTILIZE THESE DUCT BANKS, MANHOLES, PADS AND INDIVIDUAL CONDUITS AS DESIGNATED. UTILITY COMPANY CABLES/CONDUITS, AND UTA FIBER WILL BE INSTALLED UNDER SEPARATE CONTRACT.
- MINIMUM COVER ABOVE CONDUITS SHALL BE:
 - ONCOR 48"
 - AT&T 24"
 - TIME WARNER 36"
 - VERIZON BUSINESS 36"
 - UTA FIBER 36"
- MAINTAIN MINIMUM 12" SEPARATION BETWEEN COMMUNICATION CONDUITS AND ONCOR CONDUITS.
- CONDUITS SHALL TERMINATE AT RISER POLES, MANHOLES, TRANSFORMERS AND SWITCHGEAR IN ACCORDANCE WITH UTILITY COMPANY SPECIFICATIONS.
- CONDUITS SHALL BE SCHEDULE 40 P.V.C. ALL 90'S SHALL BE LONG RADII SWEEP.
- PROVIDE CABLE IDENTIFICATION WARNING TAPE 12" BELOW GRADE, ENTIRE WIDTH OF DUCT BANKS.
- CAP CONDUITS STUBBED OUT AND PLUG UNLESS AND SPARE MANHOLE CONDUIT TERMINATIONS.
- STAKE AND MARK LOCATIONS OF DUCT BANKS, MANHOLES, AND EQUIPMENT FOR UTILITY COMPANY REVIEW AND APPROVAL PRIOR TO EXCAVATION.
- CORE DRILL EXISTING MANHOLES AS REQUIRED.
- WORK SHALL BE PHASED AS DIRECTED BY OWNER AND UTILITY COMPANIES.
- PROVIDE AND MAINTAIN SLOPPY.
- ALL PAVING, LANDSCAPING, IRRIGATION, ETC. SHALL BE RESTORED TO EXISTING CONDITION.
- PROVIDE LINE LOCATION MARKERS AS REQUIRED BY EACH UTILITY COMPANY.
- AT EXISTING ONCOR RISER POLE P49 BEING REMOVED, ONCOR WILL USE EXISTING RISER CABLE AND TERMINATE IN PMH-11 NO. 4.
- AVOID DRILLING OF TREES ALONG WEST THIRD AND OAK STREET (TRANSFORMERS, TRANSFORMERS, AND CONDUITS).

MANHOLE AND DUCTBANK DEPTHS SHALL BE INCREASED AS NECESSARY SO THAT MINIMUM COVER AND MINIMUM MANHOLE NECK HEIGHT IS MAINTAINED AFTER FINAL GRADING. GRADE SHOWN ON PLAN/PROFILE SHEETS REPRESENTS APPROXIMATE EXISTING GRADE ELEVATION. VERIFY FINAL GRADE PRIOR TO DUCTBANK TRENCHING AND MANHOLE EXCAVATION. MANHOLE NECKS SHALL BE SECTIONAL SO THAT TOP OF COVER IS 2" ABOVE EXISTING ELEVATION OR FLUSH WITH STREET GRADE WHEN COVER IS ON STREET. NECK HEIGHT AND EXACT ELEVATION SHALL BE ADJUSTED AFTER FINAL GRADING. THIS WORK SHALL BE COORDINATED WITH SEPARATE SPECIAL EVENTS CENTER CONTRACTOR, PARKING GARAGE/RESIDENCE HALL CONTRACTOR, AND UTA BLVD. STREETSCAPE CONTRACTOR.

ALT. NO. 1
AT EXISTING ONCOR RISER POLE BEING REMOVED, ONCOR WILL USE EXISTING RISER CABLE TO EXTEND TO MANHOLE AND SPLICE TO NEW UNDERGROUND CABLE IN MANHOLE NO. 4



YAGGI ENGINEERING, INC.
CONSULTING ENGINEERS
2000 W. 17th St. Suite 270
Arlington, TX 76017 • (817) 463-3323
TEXAS REGISTRATION # 0022

SOUTH PECAN STREET
OVERHEAD UTILITY RELOCATION
SITE PLAN - SOUTH



YEI #: 9029.00
DATE: 10-30-2009
DRWN BY: TEC
RVD BY: RTY

REVISD 05/10/10

SITE PLAN - SOUTH
SCALE: 1"=40'-0"



SHEET:
E-4
4 OF 7E

College Park District Construction



College Park District Construction

DUCT BANK
FOR ALL
UTILITIES,
BOTTOM OF IT
ABOUT 16
FEET BELOW
GRADE.
CONTAINS
UTA IT LINES,
ONCOR LINES,
PHONE, CABLE
FUTURE
SPARES



College Park District Duct Bank Construction



College Park Center Sub-surface Construction

**ENTIRE SITE HAD
TO BE CLEARED
OF OVERHEAD
AND
UNDERGROUND
UTILITIES BEFORE
CONSTRUCTION
BEGAN ON NEW
BUILDING**



**WORK PLANNED A
YEAR IN ADVANCE
AND MANAGED
IN-HOUSE,
RESULTING IN ONE
FULL YEAR OF
SAVINGS IN
CONSTRUCTION
SCHEDULE**

College Park Center Construction



College Park Center Construction

College Park Center



College Park District Adjacent Construction



College Park Center Construction



College Park Center

College Park Center Construction



College Park Center Construction



College Park Center Construction



THE FINISHED PRODUCT

College Park District



College Park Center

The Green At College Park



The Green At College Park

