

15TH ANNUAL S.A.M.E. INFRASTRUCTURE FORUM



TAKING PARTNERING TO THE NEXT LEVEL

A KEY TO SUSTAINABLE PROJECT DELIVERY





AIM: Share principles we have learned to achieve successful partnering in order to facilitate effective project delivery.

- What is Successful Partnering
- Partnering Framework
- Examples

WHAT IS SUCCESSFUL PARTNERING ?



Partnering is Voluntarily setting up working relationships that assure an environment that facilitates a “team” approach to conducting business and solving problems.

The essence of Partnering is establishing and maintaining:

- **TRUST**
- **COMMITMENT**
- **SHARED VISION**

Michael Morris: “Constraints cause us to devise innovative solutions”

WHAT IS SUCCESSFUL PARTNERING ?



- Project Management
 - Utility Coordination
 - Interagency Collaborations
 - Interdepartmental Collaborations
 - Construction Management
 - Stakeholder Meetings
 - Organizational Partnering (CEC /AGC/DCAD)
 - Regional Collaborations (SEATA/BSW)
-
- **TRUST**
 - **COMMITMENT**
 - **SHARED VISION**

Don Holzwarth

*“How we think about the problem helps guide us to a solution
A Transportation Project is really a family of closely related
infrastructure projects.....but we haven’t acted without close and
urgent integration . “*

Dallas County Commissioner Districts



County Judge

Clay Lewis Jenkins

Commissioner District 1

Dr. Theresa M. Daniel

Commissioner District 2

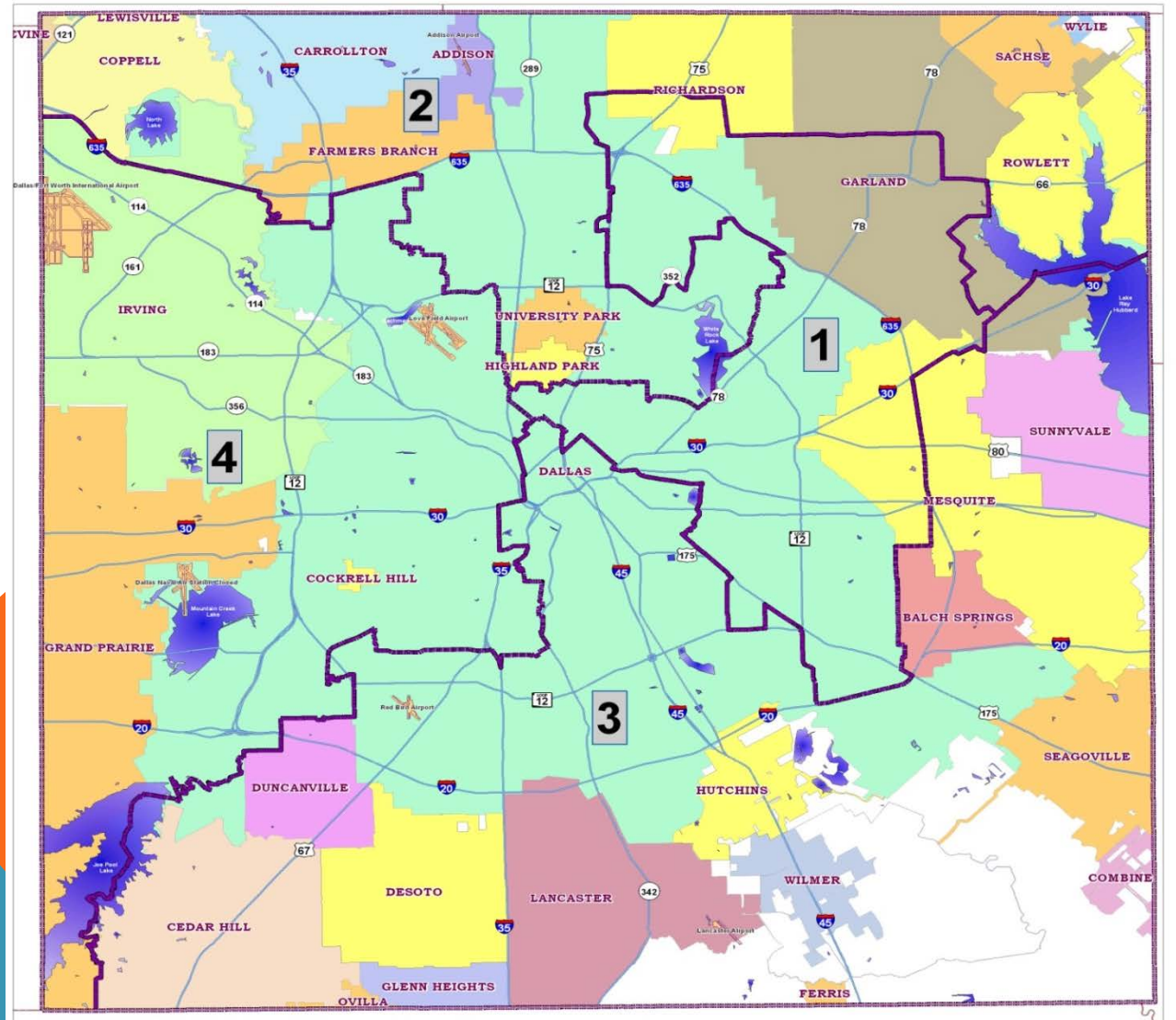
Mike Cantrell

Commissioner District 3

John Wiley Price

Commissioner District 4

Dr. Elba Garcia



DALLAS COUNTY STRATEGIC PLAN

Dallas County models **Interagency Partnerships and Collaboration.**

Dallas County is a **Healthy Community.**

Dallas County is **Safe, Secure, and Prepared.**

Dallas County proactively addresses **Critical Regional Issues.**

Dallas County is the **Destination of Choice**
for Residents and Businesses.

“VISION GIVES DIRECTION TO DALLAS COUNTY’S FUTURE”

Public Works Vision



- Recognized leader in regional transportation planning & coordination
- Effective agent for total transportation project delivery services
- **Valued partner**
- Vital part of Dallas County Government
- Values based organization

Public Works Mission/Vision



Regional
Transportation Projects



Quality of Life



Leading Planner



High Value Added

Dallas County Public Works Five Strategic Goals

Revolutionize Effectiveness

Leverage Technology

Revitalize Partnerships

Invest in People

Prepare for the Future

MCIP as a Regional Partner

Partnering = Trust + Commitment + Shared Vision

LEVERAGE \$\$\$\$ FOR MAJOR IMPACT

Interagency Partners

Cities of Dallas County and ...



PARTNERSHIP FUNDING PROGRAMS (typically 80/20)

- RTR
- NCTCOG SD
- STP-MM
- CMAQ
- LAQ
- SECO
- ARRA
- TIGER
- TE (STEP)

Interdepartmental Partners

**CDBG, District Attorney, Elections, Environmental Health,
Road & Bridge Districts, Trails & Preserve Program,
Tax Office, Sheriff's Office, Emergency Management**

REGIONAL COLLABORATION

PROBLEM

Limited funding for
transportation
projects

- Dwindling Budgets
- Property & Sales Tax Revenue subject to Economic Cycles

SOLUTION



Regional Partners



What is The MCIP?

Major Capital Improvement Program

Partnership program with Cities

- Dallas County funds up to 50% of project basic transportation infrastructure costs
- Dallas County funding commitment program that complements City Bond and other (Regional, State, Federal) funding programs
- Since 1999: Over \$570M County funds have leveraged a total of over \$1.8B in transportation infrastructure improvements across Dallas County. These totals are projected out to 2020.



THE MCIP MASTER AGREEMENT

FRAMEWORK FOR CITY-COUNTY PROJECTS

DISTINCTIVE ASPECTS:

Partnering Principles

- TRUST
- COMMITMENT
- SHARED VISION

Matrix PM Principles



INCLUDES:

- Definition of project
- Citizen Political support
- City-County management and funding roles
- PROJECT LEADERSHIP

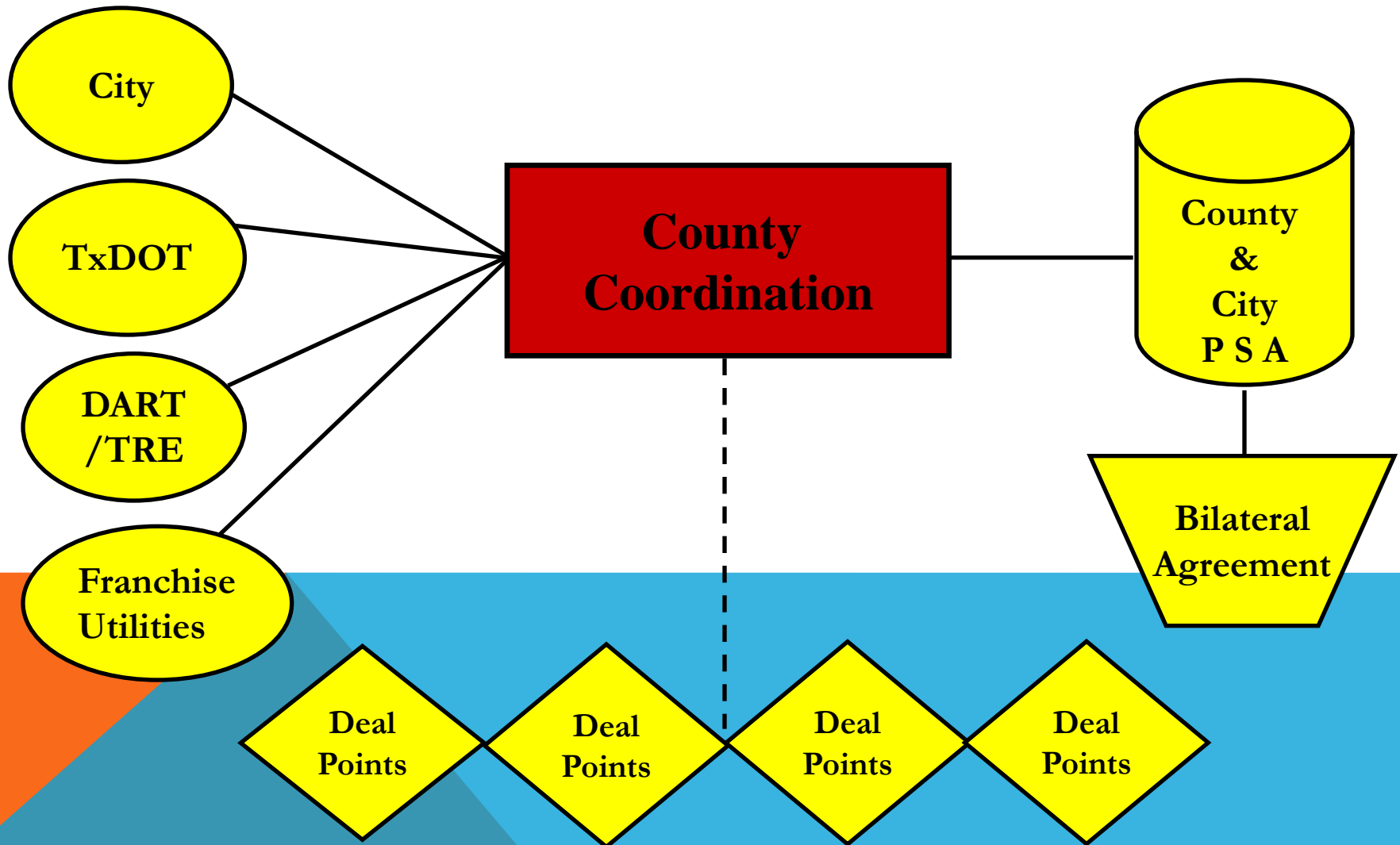
ETJ responsibility

- SUBDIVISION REGULATIONS
- ORPHAN ROAD POLICY

Renewal every ten years

INTERAGENCY COORDINATION & INTEGRATION

PARTNERING = TRUST + COMMITMENT + SHARED VISION



25 Cities have MCIP Master Agreements

- ADDISON
- BALCH SPRINGS
- CARROLLTON
- CEDAR HILL
- COCKRELL HILL
- COPPELL
- DALLAS
- DESOTO
- DUNCANVILLE
- FARMERS BRANCH
- GARLAND
- GLENN HEIGHTS
- GRAND PRAIRIE
- HIGHLAND PARK
- HUTCHINS
- IRVING
- LANCASTER
- LEWISVILLE
- MESQUITE
- RICHARDSON
- ROWLETT
- SACHSE
- SUNNYVALE
- SEAGOVILLE
- WILMER

Project Specific Agreement

Supplemental to Master Agreement

- Identifies Lead Agency
- Scope as clearly defined as possible
- Identifies funding responsibilities
- Developed with Deal Points from County, Cities, and Stakeholders

Every Project gets approved by County Commissioners Court

PSA required prior to construction

- Integrate scoping with Utilities
- Opportunity for partner agency input



ORDER NO. 2008 963 COURT ORDER 44

DATE MAY 13, 2008

STATE OF TEXAS
COUNTY OF DALLAS

BE IT REMEMBERED, at a regular meeting of the Commissioners Court of Dallas County, Texas, held on the 13-day of May, 2008, convened and made by Rika Centrell, Commissioner Dist. No. 2, and seconded by John Wiley Price, Commissioner Dist. No. 3, the following order was adopted:

WHEREAS, the matter set forth below was tried to Commissioners Court on May 13, 2008; and

WHEREAS, funding for design, right of way, and construction of the Walnut Hill Lane at Skillman Street MCIP Project 20213 was authorized by Court Order 2009-2206 dated October 30, 2007; and

WHEREAS, City and County desire to enter into a Project Specific Agreement to commit funding and designate responsibilities; and

WHEREAS, total project costs are estimated to be \$9,859,346 of which the City of Dallas has agreed by execution of the attached Project Specific Agreement to fund \$1,283,500, with North Central Texas Council of Governments (NCTCOG) and Dallas Area Rapid Transit (DART) providing \$5,150,000 to be matched with \$3,421,846 from County Funds; and

WHEREAS, the Director of Public Works recommends that the attached Project Specific Agreement for the Walnut Hill Lane at Skillman Street MCIP Project 20213 be executed upon formal execution of the agreement between the City of Dallas and Prescott Realty Group.

IT IS THEREFORE ORDERED, ADJUDGED AND DECREED by the Dallas County Commissioners Court that once the agreement between the City of Dallas and Prescott Realty Group has been formally executed the County Judge is hereby authorized and directed to execute the Project Specific Agreement with the City of Dallas in an amount not to exceed \$5,421,846 to be paid from MCIP Fund 196, Project 8201.

DONE IN OPEN COURT, this the 13th day of May, 2008.

Jim Foster, County Judge
John Wiley Price, District 3
Mike Centrell, District 2
Marlene Dickey, District 1
Keith A. Mayfield, District 4

Recommended Approval: Donald R. Holzwarth
for Donald R. Holzwarth, P.E.
Director of Public Works

Effective Partnering Enables...



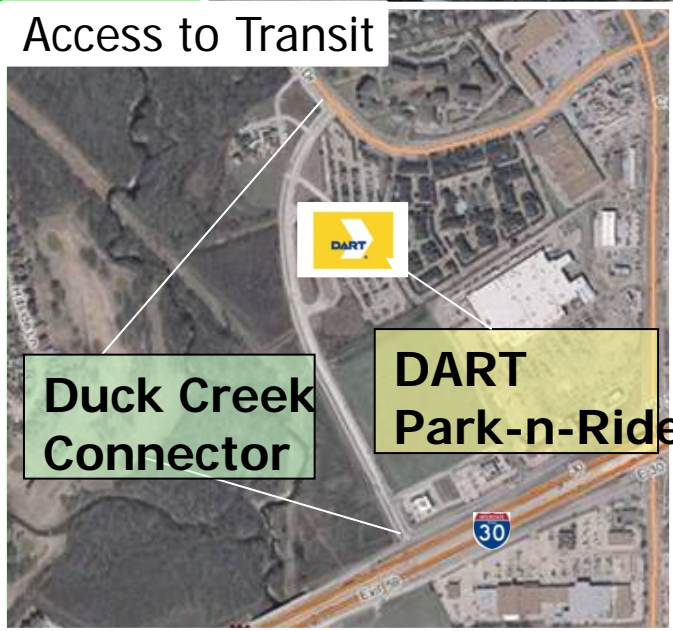
Interjurisdictional Projects



Bike/Ped Connectivity



Access to Transit



Sustainable development



Regional Collaboration

INLAND PORT PARTNERING FOR SOUTHERN DALLAS COUNTY

It is the name that has informally been given to the 77,300-acre area that is south of Loop 12/Ledbetter, east of I-35, west of the Trinity River, and north of Ellis County and that includes Union Pacific's \$100 million intermodal facility.

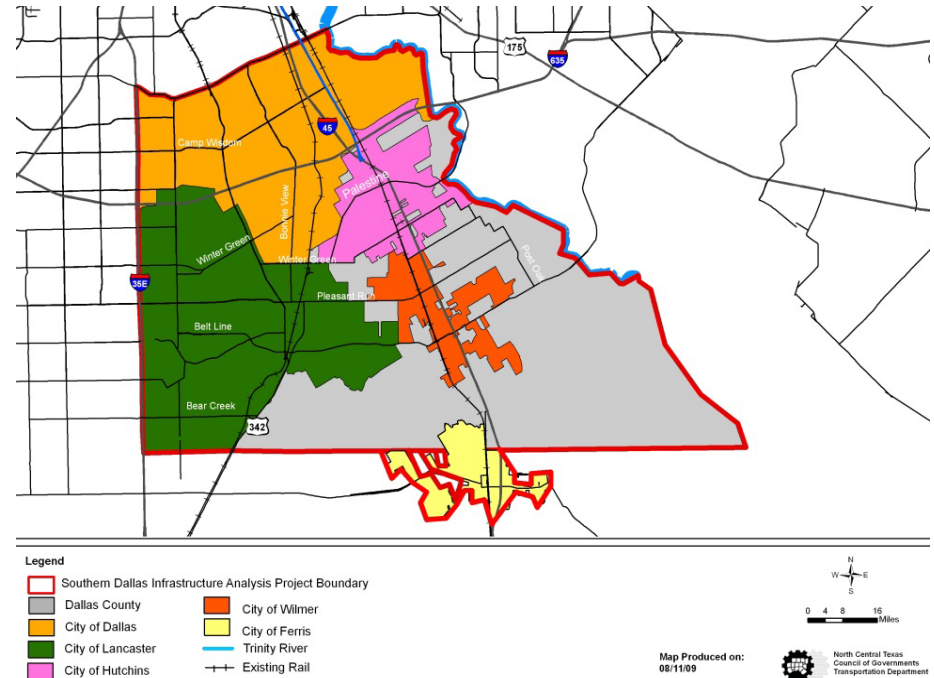
Located in several cities and in the County's unincorporated area.

Multiple property-owners and developers.

Privately-owned and developed; no special governmental entity or port authority involved.

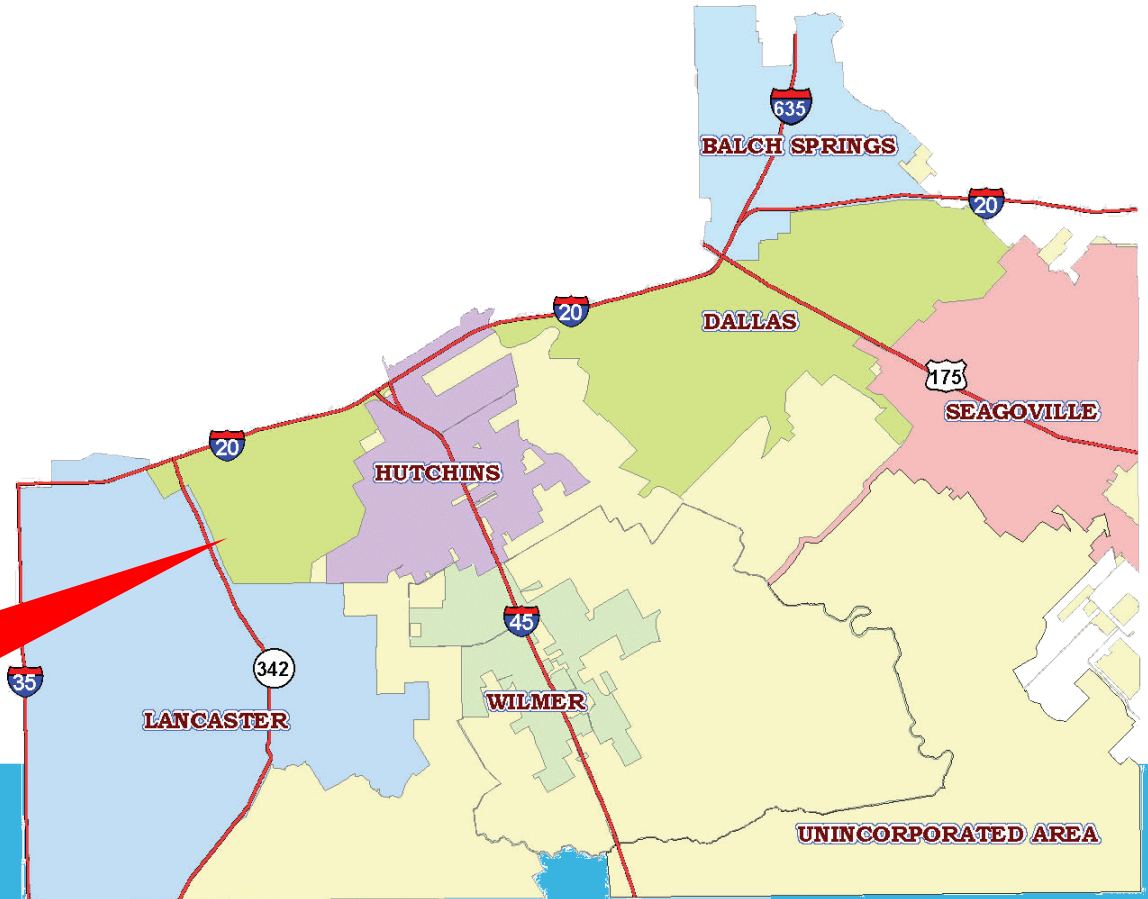
It is called an "inland port" because the UP facility and the intersection of the area's north-south and east-west interstate highways allows it to quickly receive goods from the West Coast, the East Coast, and the Gulf of Mexico.

Southern Dallas County Infrastructure Analysis (SDCIA)-Assessment of infrastructure conditions, needs



BONNIE VIEW ROAD

**PROJECT
LOCATION**



THE PARTNERS



AECOM



Kimley-Horn and Associates, Inc.

CHARRETTE DEFINED

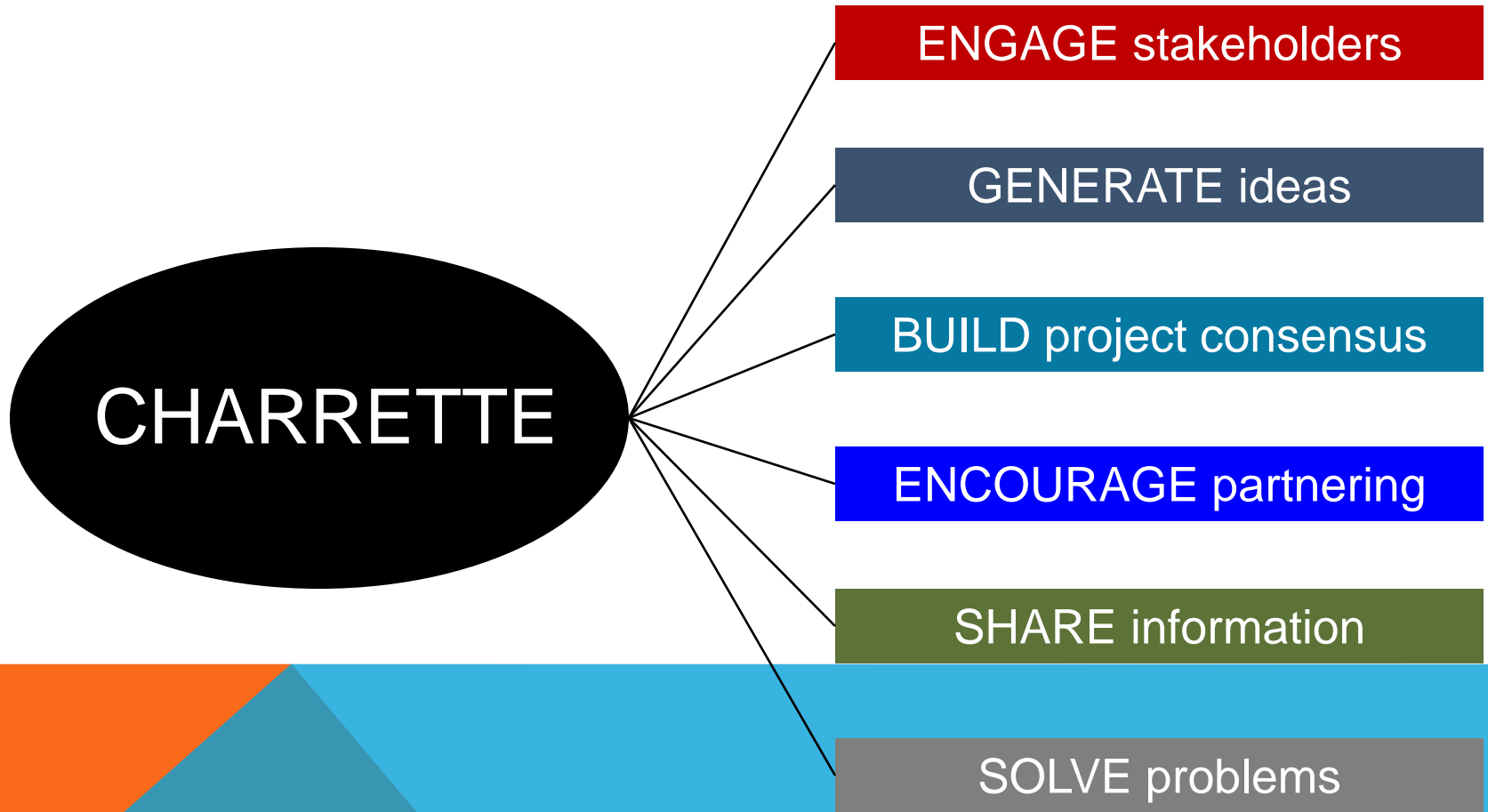
[shuh-ret]

A French word for “cart”

An intensive planning session where citizens, designers and others collaborate on a vision for development and/or develop solutions for defined problems. Organized to encourage participation from all stakeholders, a charrette provides a forum to share ideas and offers a unique advantage of giving immediate feedback to the designers.



Charrette Defined: In Simple Terms



PROJECT CHARTER

Bonnie View Road

Langdon Road to Wintergreen Road



AECOM

PROJECT TEAM CHARTER

We, the Bonnie View Road Design Team, will use the principles of partnering (Trust, Commitment, and Shared Vision) and ICI (Interagency Coordination and Integration) to achieve a timely, context sensitive, and high quality design project.


TEAM GOALS

- Work as one consolidated project team
- End conflicts quickly
- Enjoy shared success
- Show great attention to detail
- Produce a quality product
- Develop good working relationships with team and stakeholders

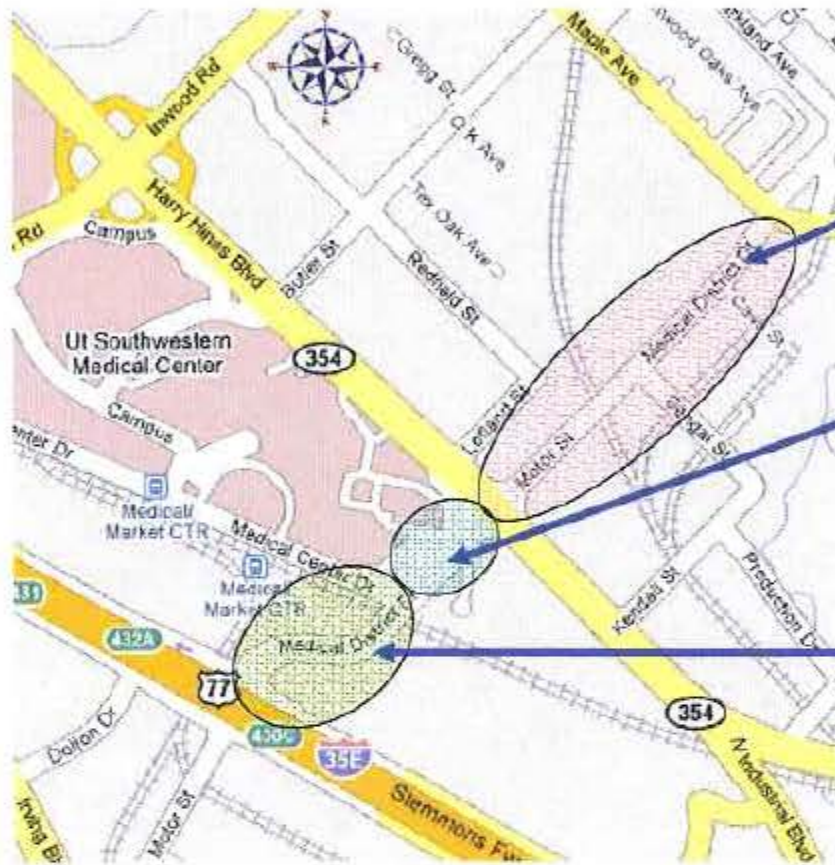
TEAM SIGNATURES

March 18, 2009

PARTNERING SUCCESSES

- ✓ **Design and Construction of DWU 96" Waterline**
 - ✓ **Construction underway – Contractor – JS Lewis Contractors**
 - ✓ **Major connection project for city of Dallas and County projects in the area**
 - ✓ **Successful partnering workshops – Design and Construction**
 - ✓ **Early involvement of franchise utilities to identify conflicts – Oncor, Time Warner , AT&T, Atmos**
 - ✓ **Continuous updates to key stakeholders and agencies**
- 

Medical District Drive – IH 35 to Maple Avenue



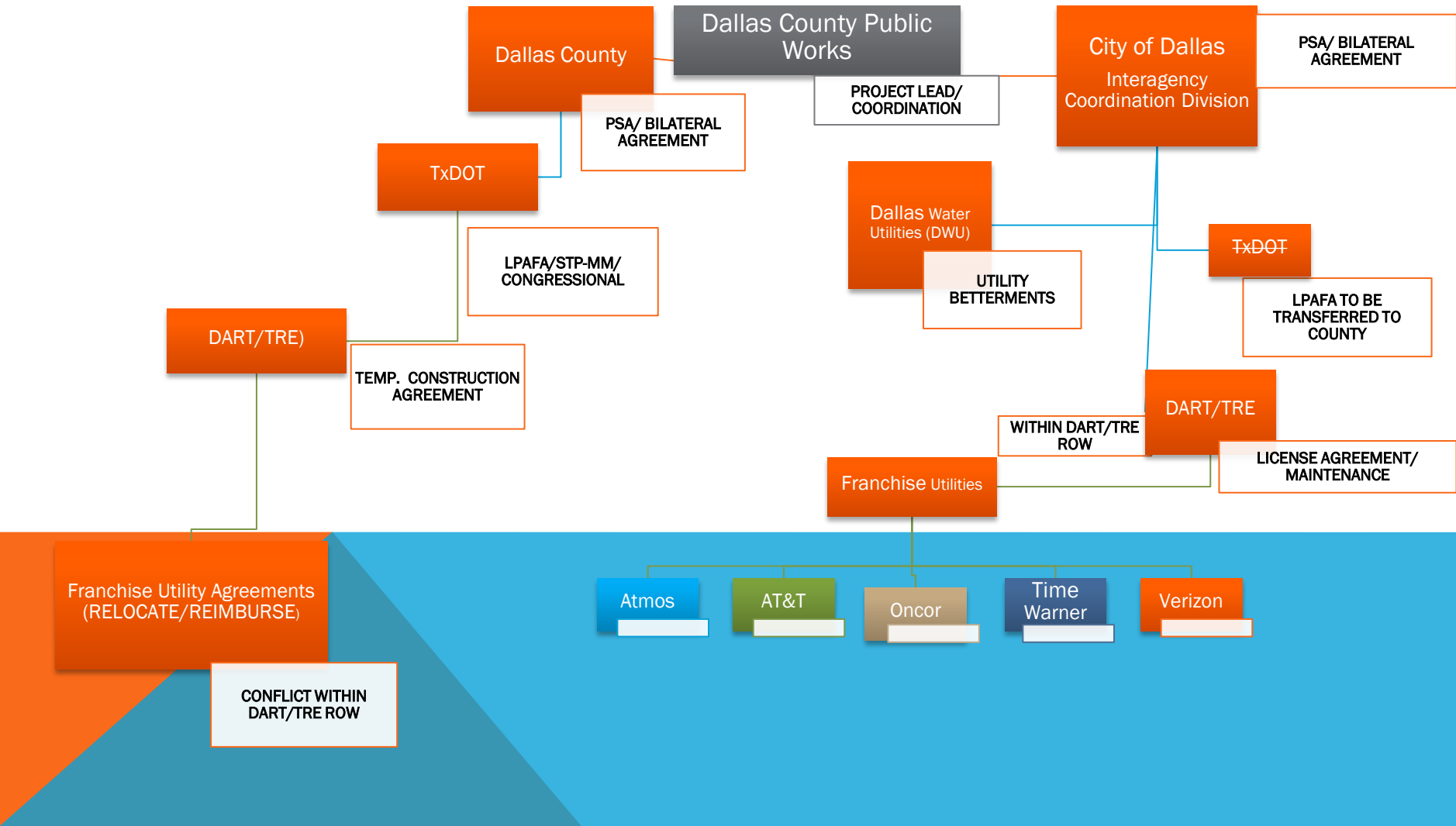
Section 1
– Maple to Harry Hines

Section 2
– Harry Hines to
Medical Center Drive

Section 3
– Medical Center
Drive to IH 35

INTERAGENCY COORDINATION & INTEGRATION

PARTNERING = TRUST + COMMITMENT + SHARED VISION





"To enhance the vitality and **quality of life** for all in the Dallas community"



"Work with others to provide **safe and reliable** transportation solutions for Texas"

The Southwestern Medical District delivers renowned **health care in partnership** with innovative, world-class research and education

Southwestern Medical
District



To improve health **care in our community**, Texas, our nation, and the world through innovation and education

"Our mission at SCBA is to **promote and support mutual Business interest of its members** through unified advocacy leading to sustainable economic growth"

"As the nation's children's hospital, the mission of Children's National Medical Center is to excel in Care, Advocacy, Research and Education. We accomplish this through: **Providing a quality health care** experience for our patients and families, Improving health outcomes for children regionally, nationally, and internationally, Leading the creation of innovative solutions to pediatric health challenges."



"The mission of Dallas Area Rapid Transit is to build, establish and operate a safe, efficient and effective transportation system that, within the DART Service Area, provides mobility, **improves the quality of life**, and stimulates economic development through the implementation of the DART Service Plan as adopted by the voters on August 13, 1983, and as amended from time to time."



PARTNERING SUCCESSES

- ✓ **Shoo-fly (detour) bridge option has been eliminated...effect is considerably reduce in cost and time**
- ✓ **TRE advance funding obligation in process to expedite construction by at least a year**
- ✓ **Transfer LPAFA from City to County; efficient funding reimbursement**
- ✓ **TRE/DART are on board with the current schematics approved**
- ✓ **Early involvement of franchise utilities to identify conflicts**
- ✓ **Continuous update to key stakeholders**
- ✓ **Regional connection to Trinity Strand Trail.**

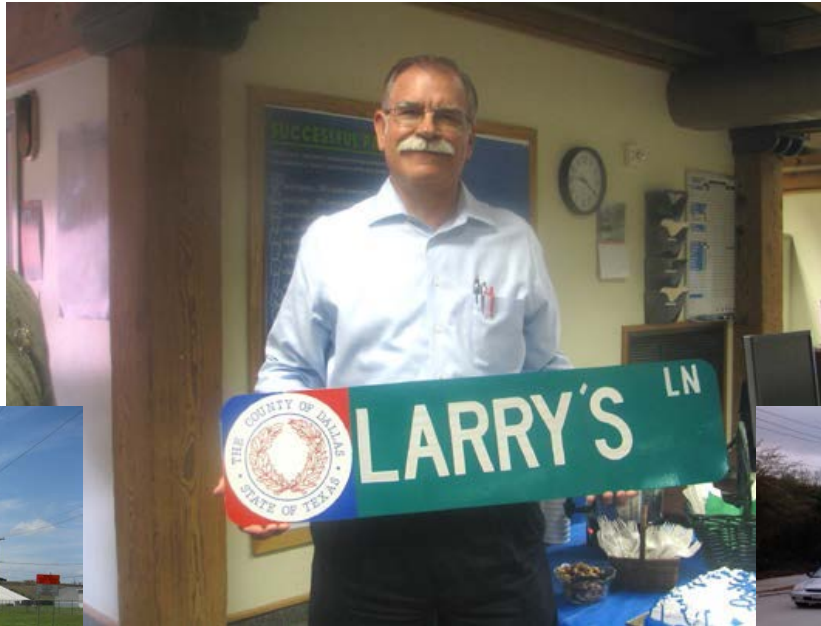
INSIGHTS APPLIED

- **PARTNERING** is Voluntary , Builds great relationships and make good business sense for all parties
- **Partnering** principles of **TRUST , COMMITMENT , SHARED VISION** need to be constantly reviewed throughout a project duration or in working with partnering agencies.
 - Strategic Partnering Meetings
 - Design and Construction Partnering Meetings
- **Partnering** - Closer team work between County, City, municipal utility, road designer, consultant, designer, franchise utility designers , etc
 - *Monthly Meetings*
 - *Quarterly Partnering Meetings*
 - *Annual Utility Partnering Awards Breakfast*
 - *Project Task Force Meeting*
- **Partnering** - Maintaining commitment despite changes in Agency , Stakeholder representatives and/or visions
- **Partnering** -Having Partnering principles throughout Agreements with deal points is essential to the project process.

Partnering requires that each partner has “skin in the game” .MCIP 50%-50% brings potential to cooperatively seek winning solutions to tough zoning impacts on ROW, Utility aspects

Utility Partner

Partnering = Trust + Commitment + Shared Vision



STAY TUNE !