

HARRY HINES SHARED USE PATH

*Federally-Funded
CSJ: 0918-47-298
PROJECT MCIP 40216*

PRE-PROJECT
PUBLIC MEETING

June 9, 2022



HOUSE KEEPING ANNOUNCEMENTS



Audience



Listen-Only Mode

Introduce Yourself & To Ask Questions



Click Q&A Feature

Upcoming Programming



Stay Tuned

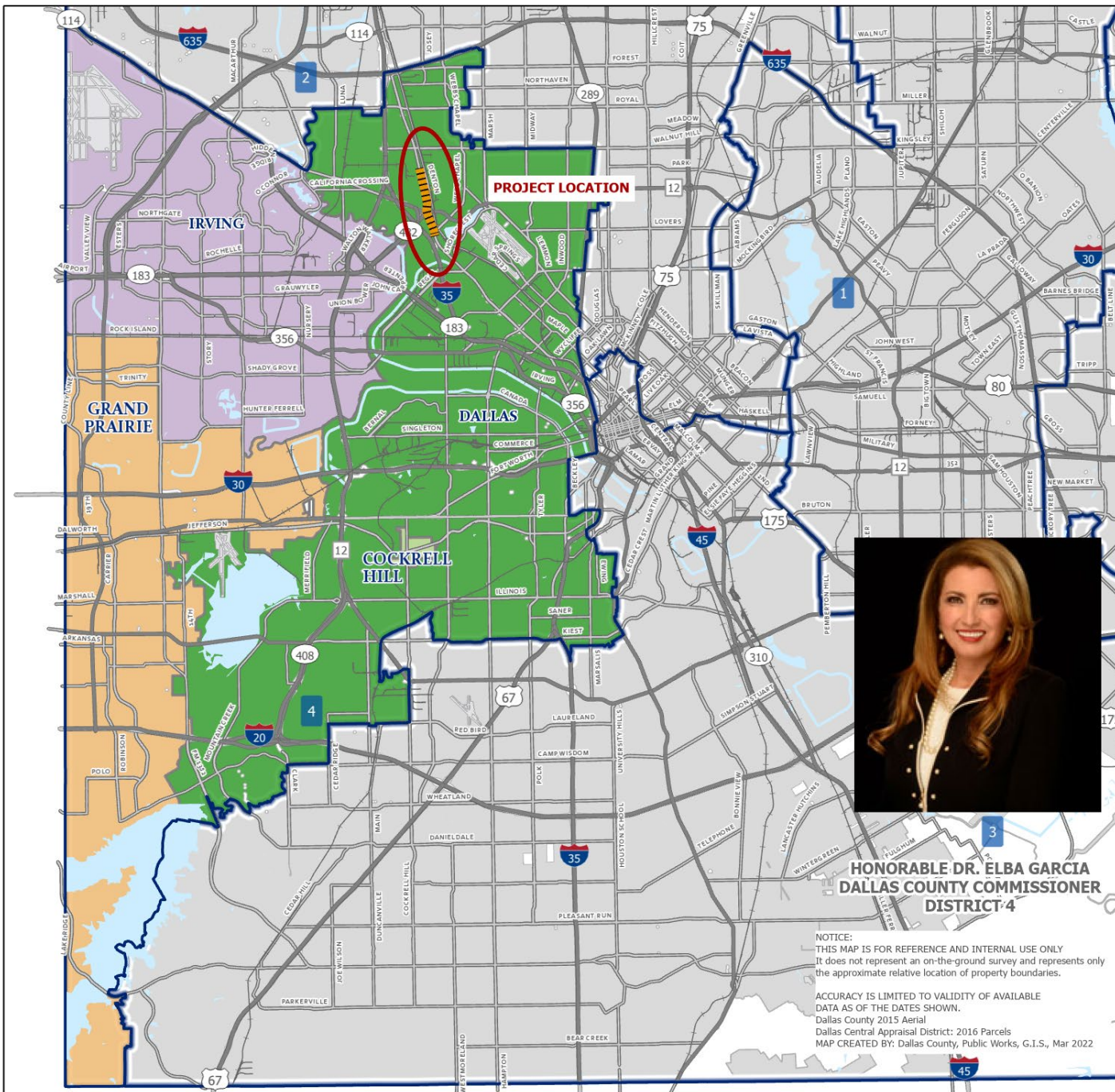
Recording



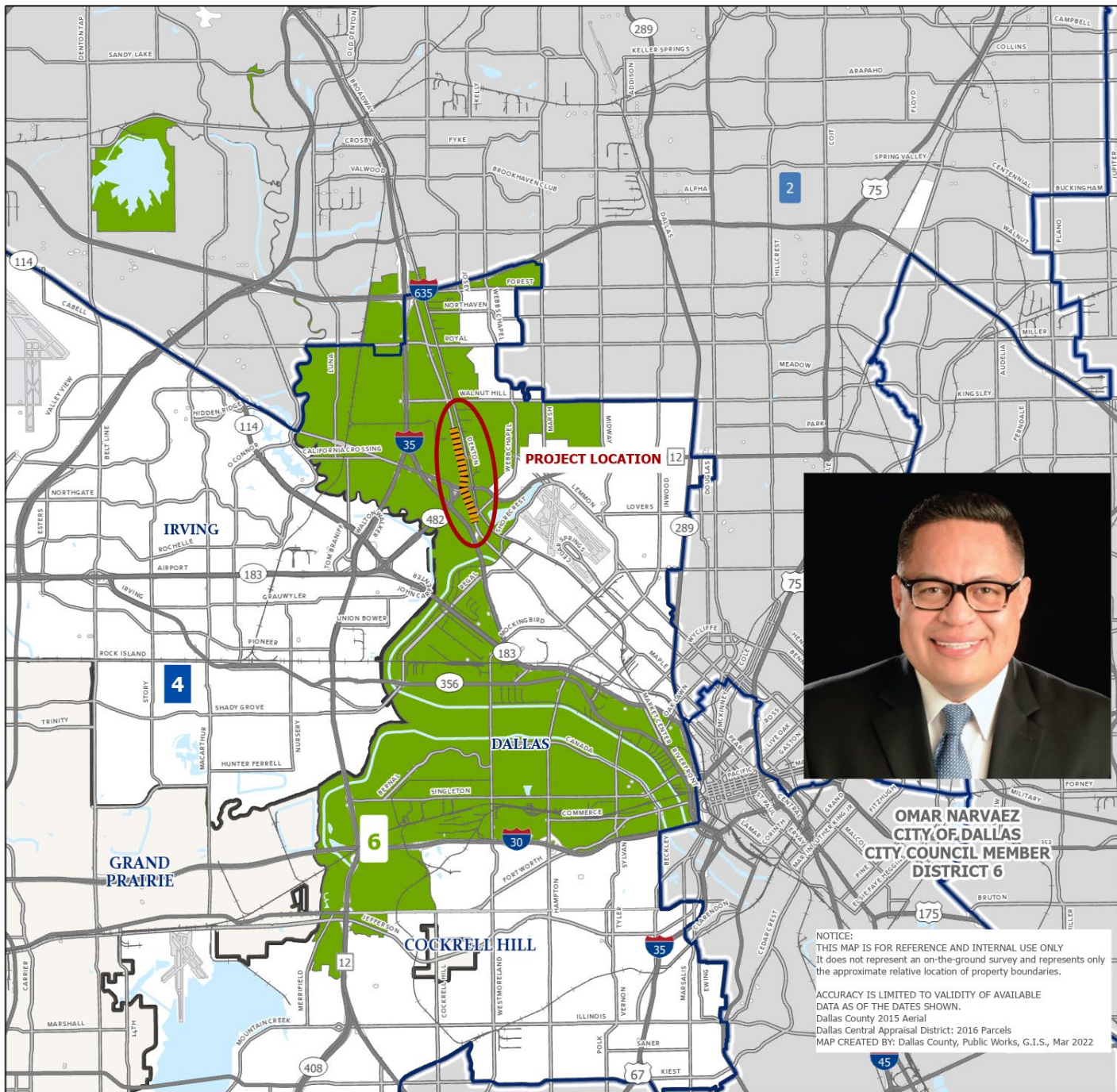
dallascounty.org

AGENDA

- Welcome and Introductions
- Remarks from Dallas County Commissioner District #4 - Dr. Elba Garcia
- Statement from Director of Public Works– Alberta Blair
- Harry Hines Shared Use Path Project Overview
- SBE Program Overview – Jesse Crawford
- TxDOT DBE Program Overview
- p Questions & Answers
- Closing Remarks



DALLAS COUNTY DISTRICT 4



OMAR NARVAEZ
CITY OF DALLAS
CITY COUNCIL MEMBER
DISTRICT 6

NOTICE:
THIS MAP IS FOR REFERENCE AND INTERNAL USE ONLY.
It does not represent an on-the-ground survey and represents only
the approximate relative location of property boundaries.

ACCURACY IS LIMITED TO VALIDITY OF AVAILABLE
DATA AS OF THE DATES SHOWN.
Dallas County 2015 Aerial
Dallas Central Appraisal District: 2016 Parcels
MAP CREATED BY: Dallas County, Public Works, G.I.S., Mar 2022

CITY OF DALLAS DISTRICT #6

OFFICIALS PRESENT



PUBLIC WORKS DEPARTMENT



DALLAS COUNTY

County's Vision — To Be:

- Operationally a model government entity
- A healthy community
- Safe, secure, and prepared
- A proactive regional partner
- The destination of choice for businesses and residents

PUBLIC WORKS MISSION



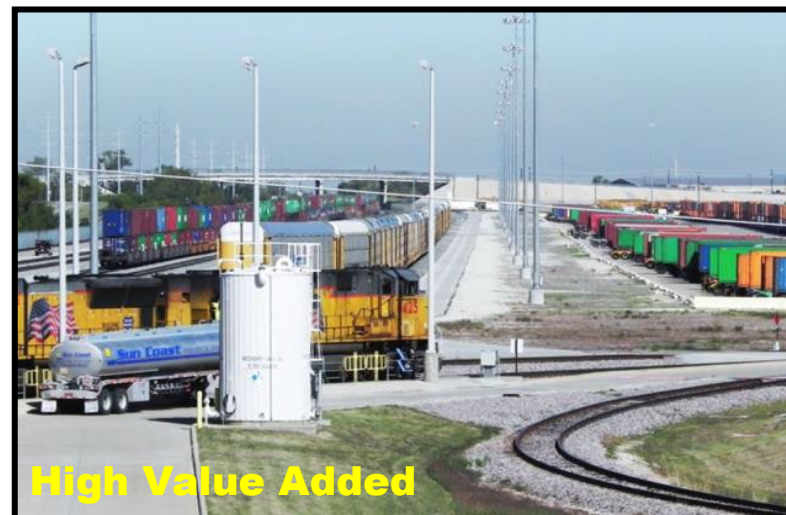
Regional Transportation Projects



Quality of Life



Leading Planner



High Value Added

PUBLIC WORKS PROJECT MANAGEMENT TEAM



Dallas County Public Works Design Team

PROJECT TEAM

Partnering Agencies

- *Dallas County (Lead Agency)*
- *TxDOT*
- *North Central Texas Council of Governments*
- *City of Dallas*



Design Team

- *Dallas County Public Works Design Team*
- *AZB Engineering*



PROJECT HISTORY

- **August 2019:**

- *Project awarded TASA funding for construction as a part of Federally-Funded project*

- **May 2021:**

- *Begin conceptual design (0%-30%) efforts began*

- **January 2022:**

- *Begin final design (30%-100%) efforts*

- **May 2022:**

- *Environmental Clearance Approved*
- *Final PS&E Completed and Submitted to TxDOT for Approval*

PROJECT HISTORY

- **June of 2022:**

- *100% Plan and Construction Bid Document To Be Approved*

- **July of 2022:**

- *Obtain State Letter Of Authority/Federal Project Authorization and Agreement*

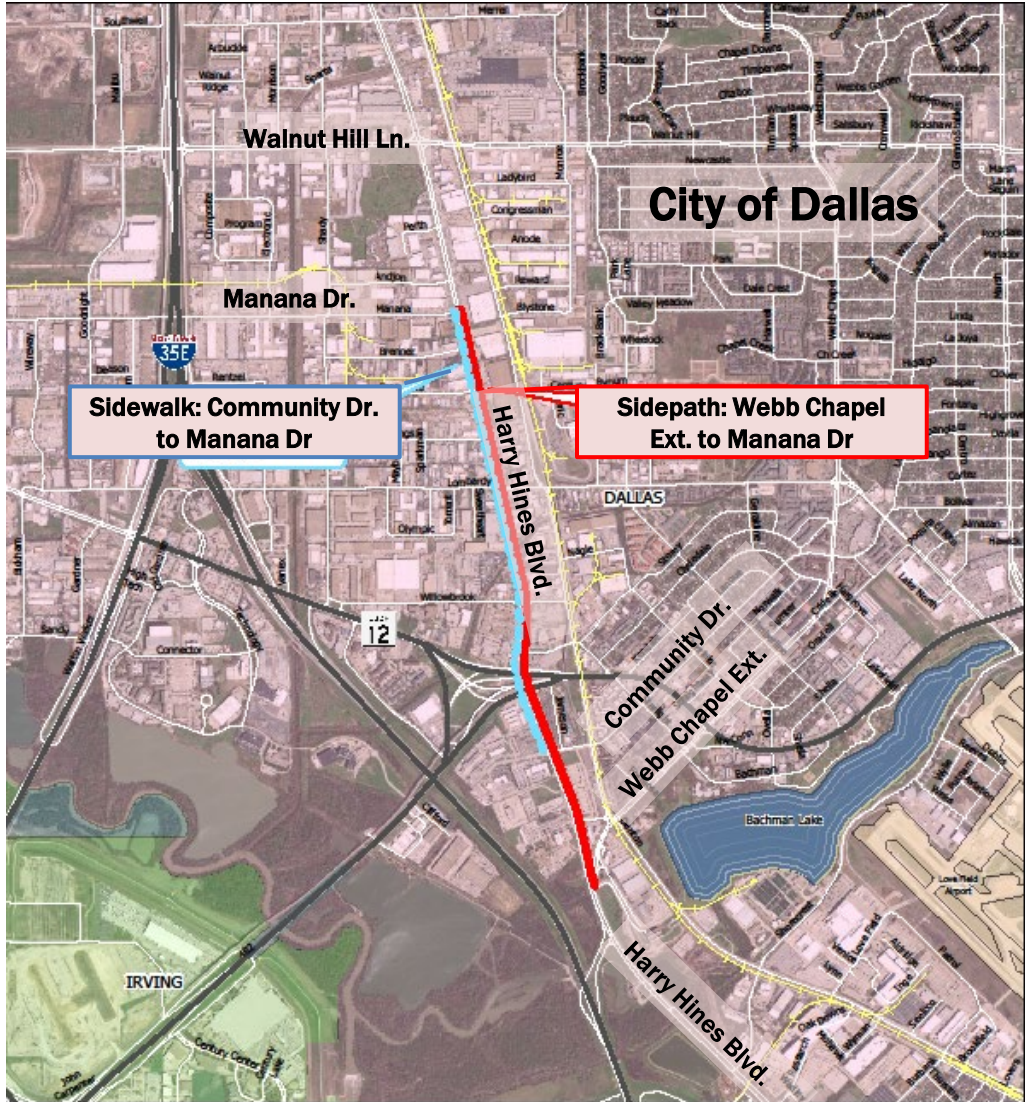
- **August of 2022:**

- *Advertise*

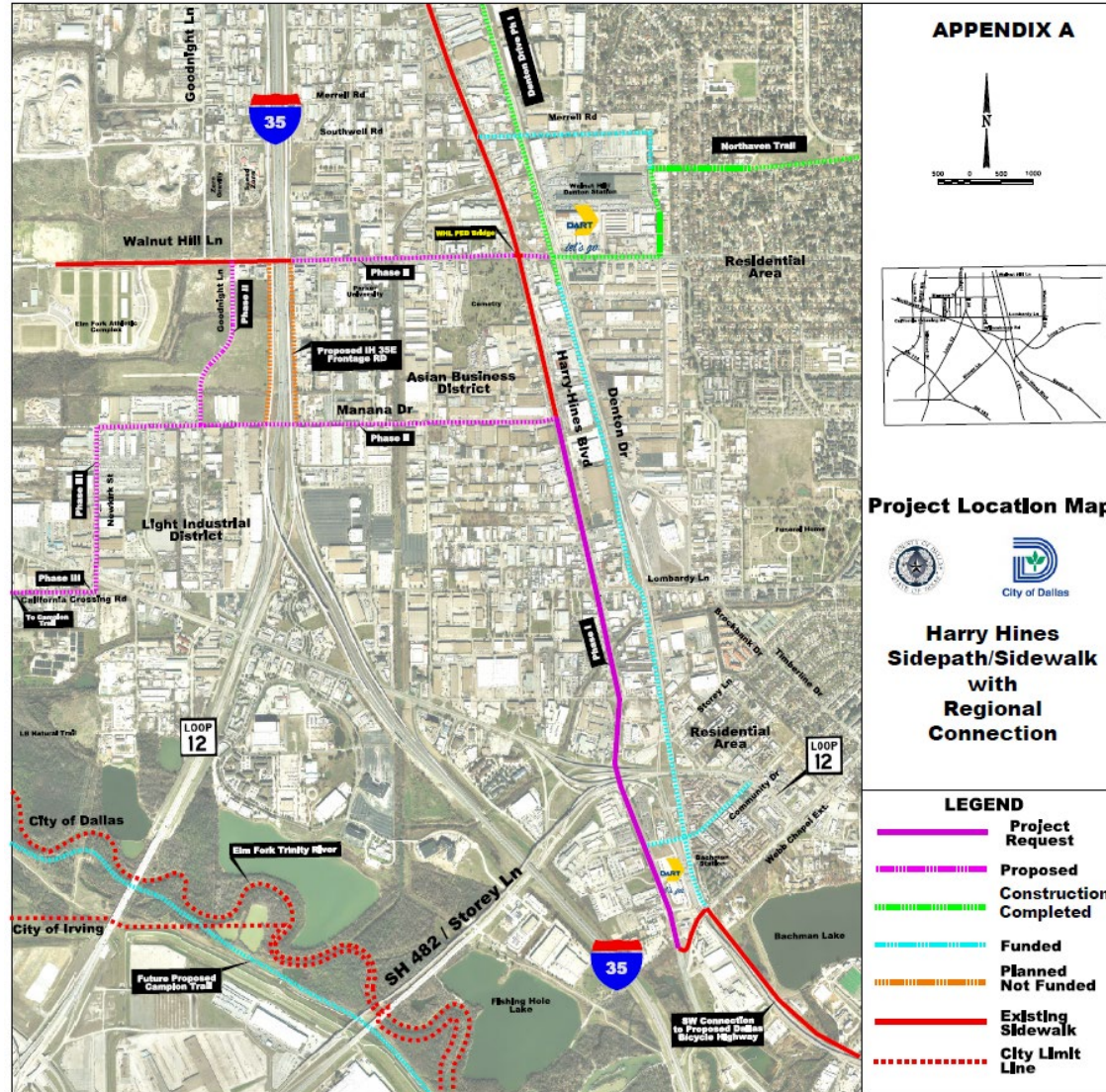
- **End of 2022:**

- *Begin Construction*

PROJECT LOCATION



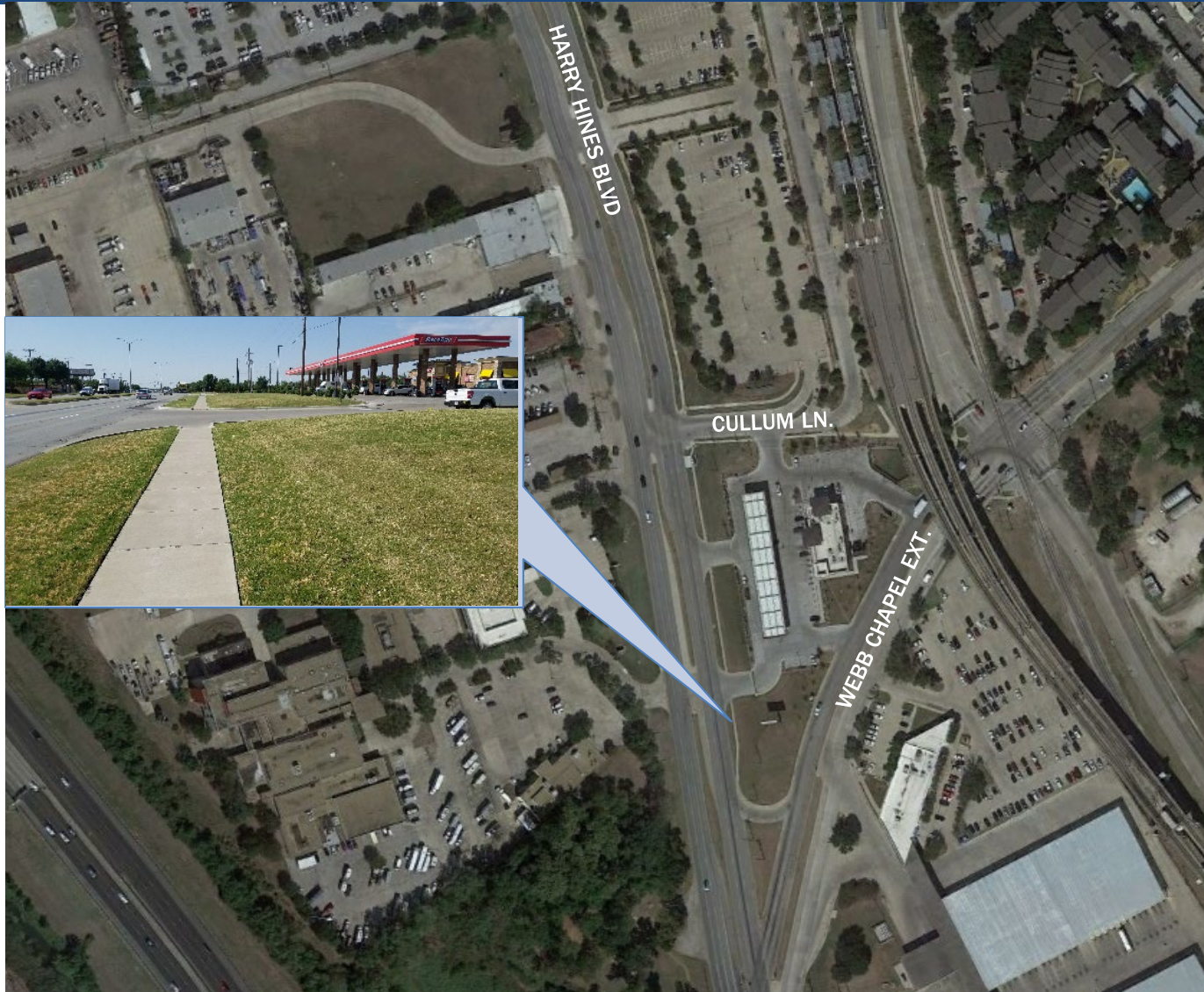
REGIONAL TRAIL CONNECTIVITY



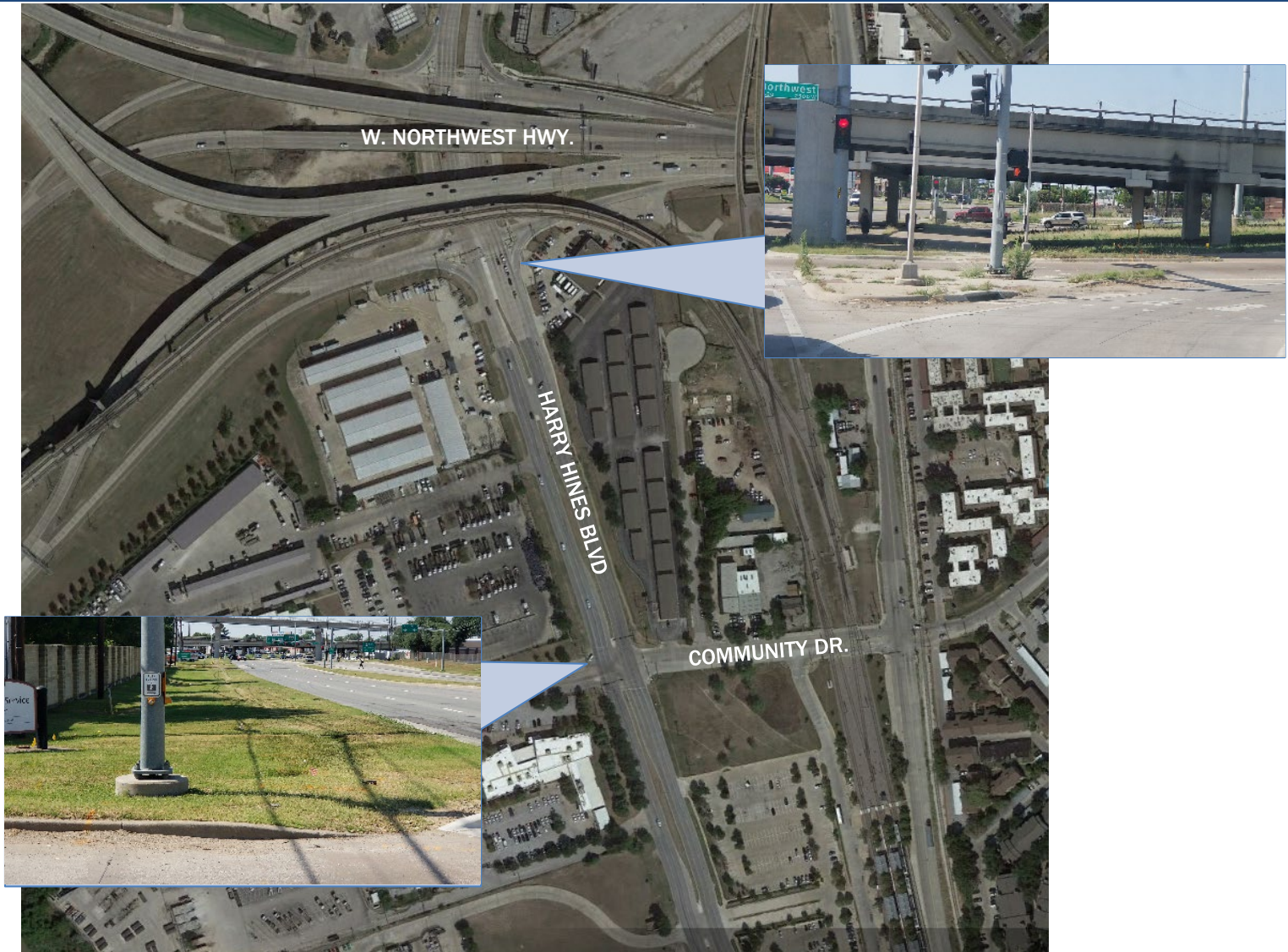
PROJECT SCOPE

- Project is within Existing Right of Way
- 7' wide Sidewalk west side of Harry Hines Blvd from Community Dr. to Manana Dr.
- 8' to 10' wide Shared Use Path east side of Harry Hines Blvd. from Webb Chapel Ext. to Manana Dr.
- Driveway reconstructions
- Pedestrian Traffic signal improvements at Community Dr. and Manana Dr.
- Storm drain inlet relocations
- Fire Hydrants relocations
- Bollards at some locations for safety
- Underground Conduit for the length of the project

EXISTING CONDITIONS



EXISTING CONDITIONS



EXISTING CONDITIONS



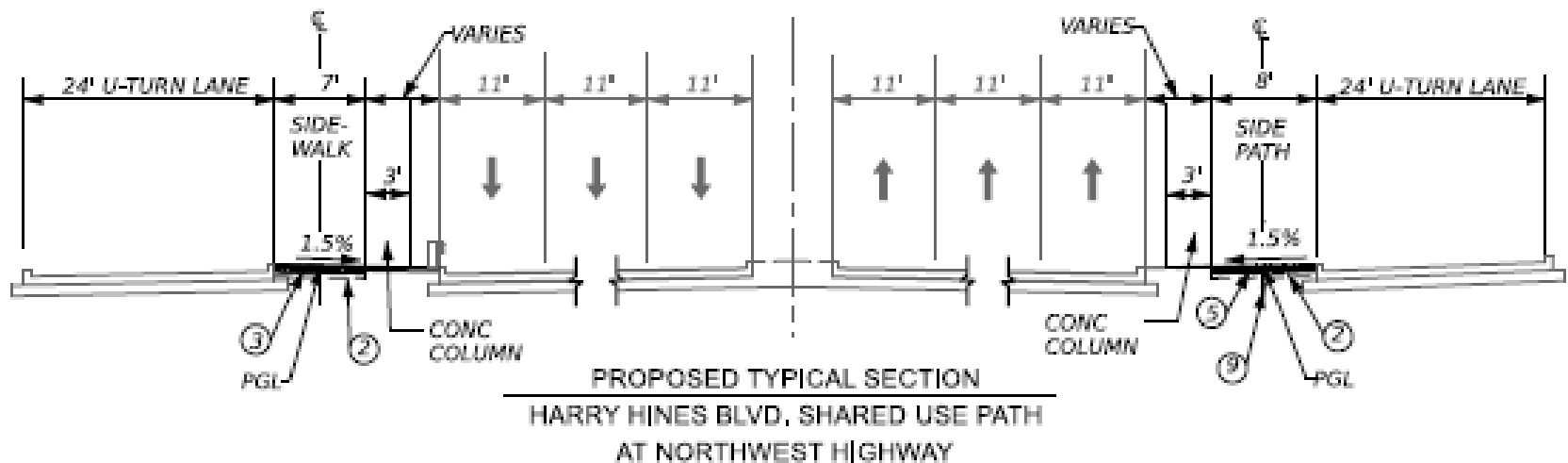
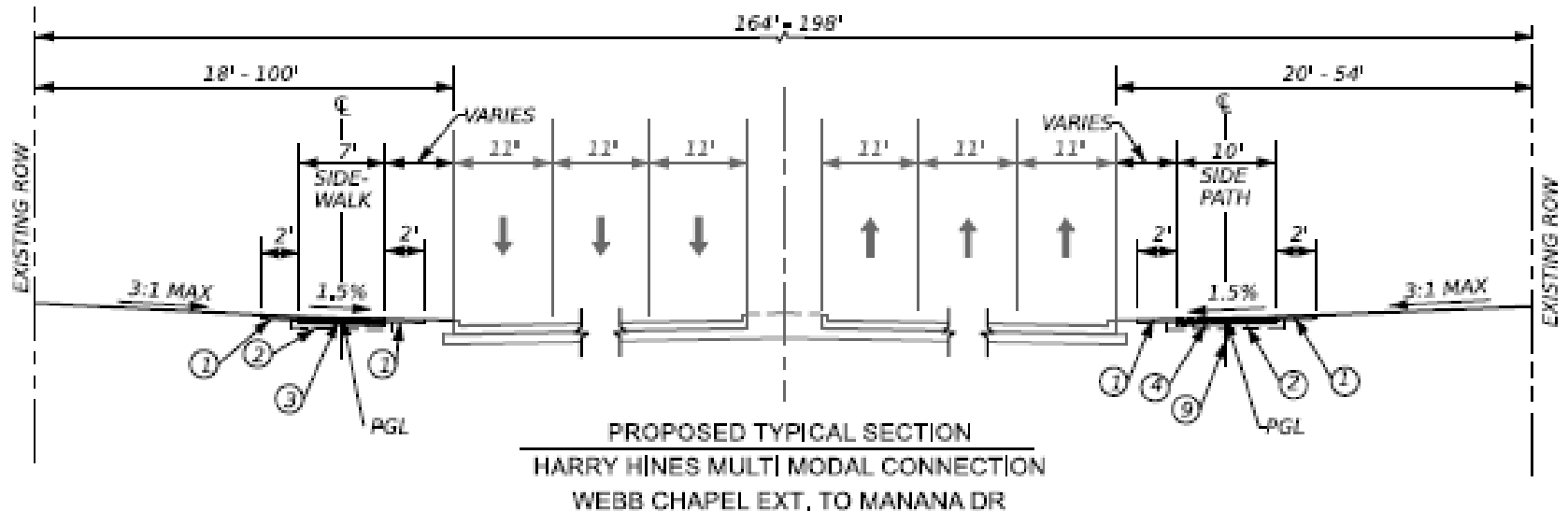
EXISTING CONDITIONS



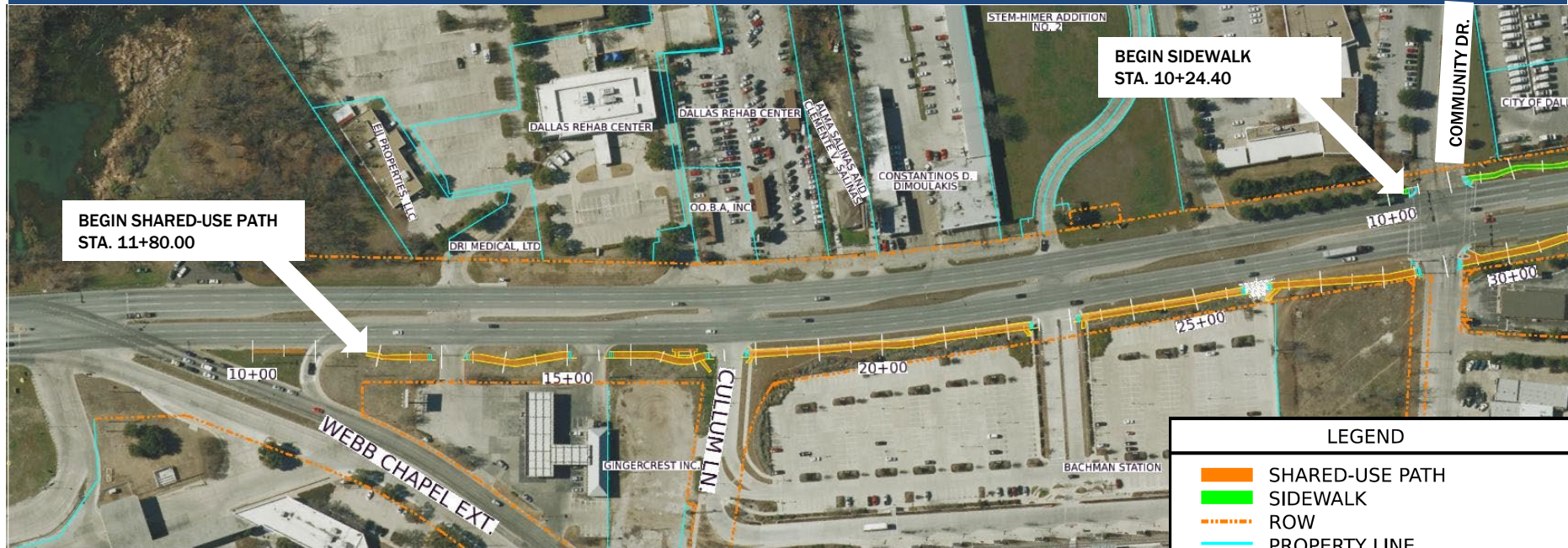
EXISTING CONDITIONS



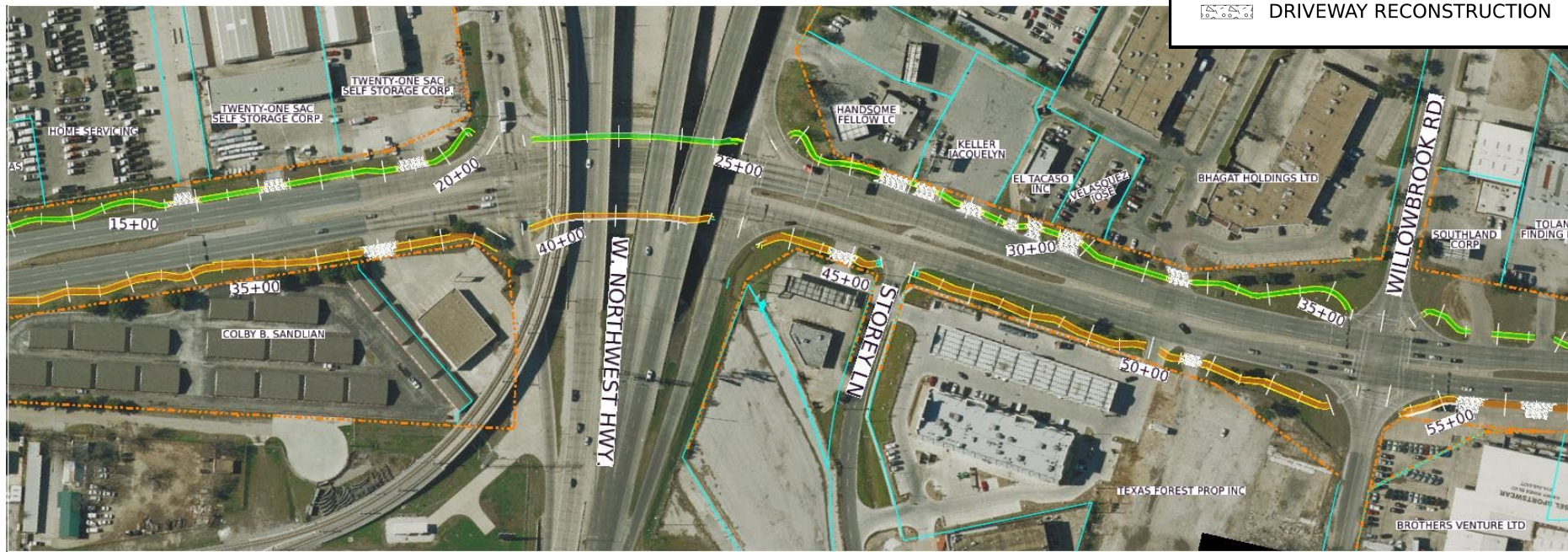
TYPICAL SECTIONS



PROJECT LAYOUT



LEGEND	
	SHARED-USE PATH
	SIDEWALK
	ROW
	PROPERTY LINE
	DRIVEWAY RECONSTRUCTION



PROJECT LAYOUT



CONSTRAINTS



CONSTRAINTS



CONSTRAINTS



Matchline STA. 54+00.00

HARRY HINES BLVD

FACE OF RETAINING WALL 'C' (SEE RETAINING WALL 'C' PLAN AND PROFILE SHEET FOR DETAILS)

RELOCATE FIRE HYDRANT (SEE FIRE HYDRANT RELOCATION SHEETS FOR DETAILS)

INSTALL BOLLARDS 1' OC AT 5' SPACING FROM BACK OF RETAINING WALL (17)

EXISTING BACK OF CURB

END PROP CURB STA. 56+32.26 OFF. 6.0' RT

INSTALL BOLLARDS 1' OC AT 5' SPACING FROM BACK OF RETAINING WALL (14)

END PROP CURB STA. 56+60.70 OFF. 6.3' RT

RELOCATE FIRE HYDRANT (SEE FIRE HYDRANT RELOCATION SHEETS FOR DETAILS)

END PROP CURB AND GUTTER STA. 55+22.90 OFF. 5.0' RT

L72

L73

L74

L75

L76

L77

C50

L78

C51

DRIVEWAY (5) (CONC) 1105.8

DRIVEWAY (6) (CONC) 125.7

DRIVEWAY (7) (CONC) 210.3

BEGIN PROP CURB AND GUTTER STA. 54+34.79 OFF. 4.74' RT

INSTALL BOLLARDS 1' OC AT 5' SPACING FROM FACE OF CURB (17)

FACE OF RETAINING WALL 'B' (SEE RETAINING WALL 'B' PLAN AND PROFILE SHEET FOR DETAILS)

BEGIN PROP CURB STA. 56+09.42 OFF. 6.0' RT

EXISTING ROW

FILL WITH CLASS "B" CONCRETE W/ DOMED TOP

BOLLARD DETAIL

10" D.I. PIPE CLEAN METAL, APPLY PRIMER AND PAINT SAFETY YELLOW

SLOPE TO DRAIN

EX GRADE

16" DIA CLASS "B" CONCRETE BASE AT A DEPTH OF 3.25' BELOW EX GRADE

Matchline STA. 58+40.00

UTILITIES

Utility Owner

Oncor

Charter-Spectrum

Dallas Water Utility



CURRENT FUNDING SOURCES

➤ Federal (TA Set-Aside)	\$2,181,588
➤ Reduced by State Admin cost	
➤ 2019 Transportation Alternatives Set-Aside Program Awarded Project	
➤ Dallas County	\$2,854,800
➤ City of Dallas	\$200,000

**CURRENTLY APPROVED PROJECT
FUNDING = \$5,236,388**

CURRENT ESTIMATED PROJECT COST

- **Engineer's Probable
Construction Cost Estimate
(Including Contingency) \$3,690,000**
- **Design (In-House Project
Delivery and Consultant Fee) \$1,546,388**

**TOTAL ESTIMATED PROJECT COST=
\$5,236,388**

PROJECT SCHEDULE

<u>Estimated Timeline:</u>	
➤ Bid: Advertise	August 2022
➤ Begin Construction	End of 2022



Jesse Crawford, Director of SBE Program

Dallas County SBE Program Overview

Harry Hines Shared Use Path

Mission:

- Create a level playing field on which small businesses can compete fairly.

Our Goals:

- Utilize eligible small businesses to enhance the capacity of small businesses.
- Increase the number of competitively awarded contracts to small businesses.
- Promote the use of small businesses in Dallas County contract and subcontract opportunities.
- Ensure non-discrimination in the award and administration of Dallas County contracts and procurements to SBE's.

TXDOT DBE PROGRAM

Noraima (Nora) Perez, DBE Coordinator



TXDOT DBE PROGRAM

To be recognized as a DBE Firm:

- Firms must be certified as a DBE through the partners of the Texas Unified Certification Program (TUCP):
 - *North Central Texas Regional Certification Agency*
 - *Texas Department of Transportation*
 - *City of Austin*
 - *South Central Texas Regional Certification Agency*
 - *City of Houston*
 - *Corpus Christi Regional Transportation Authority*
- A for-profit small business
- Firm's majority owner's personal net worth must not to exceed \$1.32M
- 51% owned and controlled by one or more socially and economically disadvantaged individuals

TXDOT DBE PROGRAM

Requirements:

- ✓ Firms **MUST** complete the DBE Commitment Agreement Form
 - The contractor certifies by signature on this agreement that subcontracts will be executed between the Prime and DBE subcontractors

- ✓ Firms awarded this contract are required to meet or exceed the **7%** DBE goal

- ✓ Only DBEs certified by the TUCP are eligible to be used for the goal attainment.
 - The Directory can be accessed at the following internet address:
<https://txdot.txdotcms.com/>
 - Under Vendor Certification, click the Search Certified Directory

TXDOT DBE PROGRAM

Compliance Tracking Process

- ✓ Mandatory Diversity Compliance Reporting
- ✓ Mandatory Payment Reporting
 - *Prime to submit payments to Subcontractors*
 - *Prompt Payments (15 days)*

QUESTIONS & ANSWERS



CLOSING REMARKS



THANK YOU!

