

# Office of Small Business Enterprise

Jesse L. Crawford, Director of SBE Program

October 21, 2021



# Who am I?

- A progressive thinker and innovative leader with a proven background in supplier inclusion, supply chain management, strategic sourcing and procurement, entrepreneurship, and community engagement.
- 20+ years of global diversity experience with sustainable results with Fortune 100 Companies, Public Utilities, Government Entities, and Small & Diverse owned businesses.
- Entrepreneurial experience in the fields of Technology, Transportation, Telecommunications, Healthcare, Hospitality and Supply Chain Consulting. Previous employee of Verizon Communications, Dallas/Fort Worth International Airport, GTE, MCI, and Federal Express.
- Passion for "getting difficult things done right" and championing the value of diversity, equity, and inclusion for mutually beneficial outcomes.
- Proud father of two awesome children and a member of Alpha Phi Alpha, Fraternity, Inc..
- Northwood University Graduate (Summa Cum Laude and Magna Cum Laude Honors)



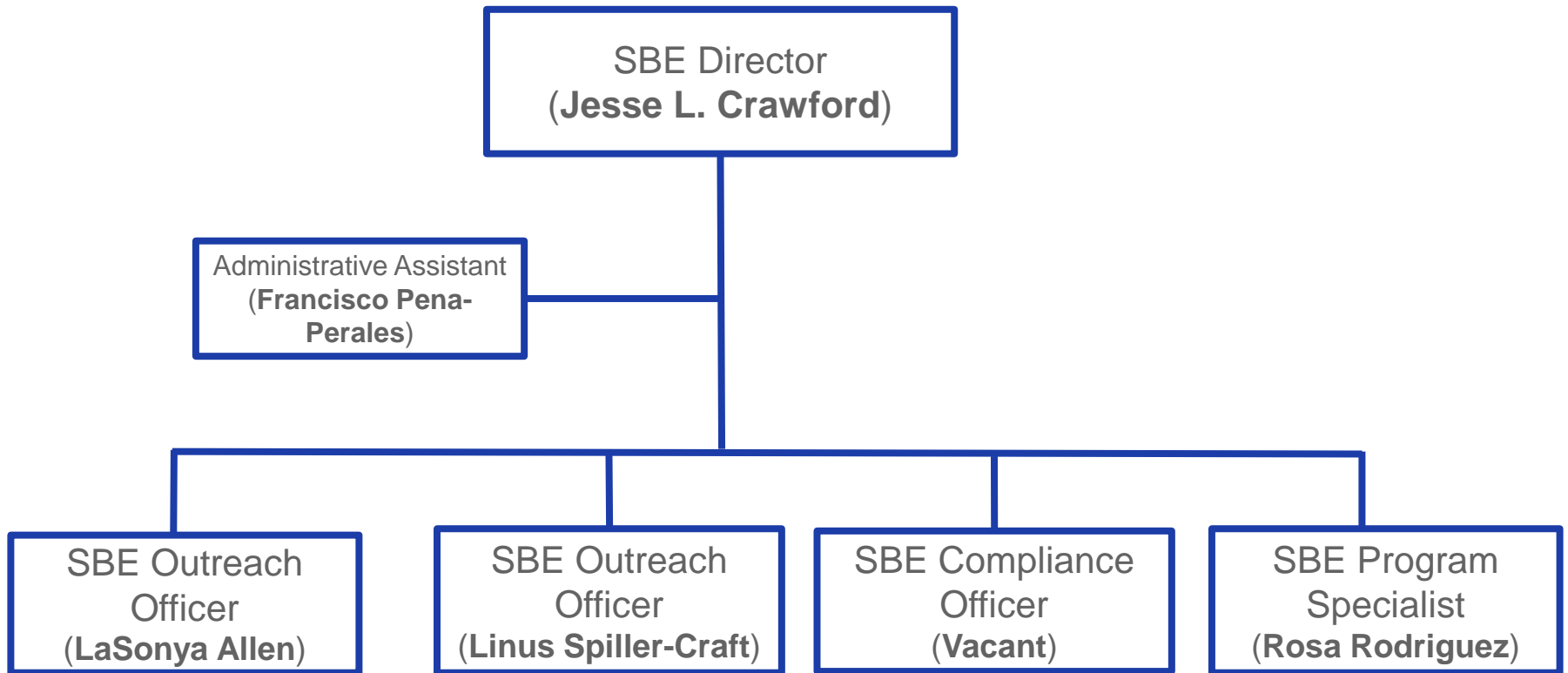
**Jesse L. Crawford, Director of SBE Program**



# HISTORICAL REVIEW

- 1986** Minority/Women Owned Enterprise Business (MWBE) Program Adopted
- 2015** Dallas County Disparity Study Conducted
- 2017** Small Business Enterprise Policy Adopted  
Office of Small Business Enterprise (SBE) Created
- 2018** Small Business Enterprise Program Launched

# SBE DEPARTMENT





## OVERVIEW OF SMALL BUSINESS ENTERPRISE PROGRAM

### Mission:

- Create a level playing field on which small businesses can compete fairly

### Our Goals:

- Utilize eligible small businesses to enhance the capacity of small businesses.
- Increase the number of competitively awarded contracts to small businesses.
- Promote the use of small businesses in Dallas County contract and subcontract opportunities.
- Ensure non-discrimination in the award and administration of Dallas County contracts and procurements to SBE's.



### Our Primary Functions:

- Serve as Dallas County SBE Liaisons
- Provide Education, Training & Awareness (both internally and externally)
- Promote Vendor SBE Certification
- Monitor and Report on SBE program
- Maintain Diverse Vendor Database
- Conduct Outreach Initiatives /Activities

### Our Support:

- Commissioner's Court
- Executive Leadership
- Purchasing
- Small Business Advocacy Council
- Certification Advocacy Partners
- Business Community



## HOW TO BE RECOGNIZED BY THE COUNTY AS A SBE...

- Firm must be certified by one of following agencies:
  - *Dallas-Fort Worth Minority Supplier Development Council*
  - *North Central Texas Regional Certification Agency*
  - *Women's Business Council-Southwest*



- Firm must have local presence within the Dallas County Metropolitan Statistical Area (MSA)
  - *Dallas County*
  - *Tarrant County*
  - *Denton County*
  - *Collin County*





## COMPLIANCE TRACKING SYSTEM (B2Gnow)

- ✓ Mandatory Diversity Compliance Reporting
  - Add all subcontractors
  
- ✓ Mandatory Electronic Payment Reporting
  - Prime to enter payments to Subcontractors
  - Subcontractors to verify





**Visit the Following Link for More SBE Program Information:**

**Dallas County SBE Program  
900 Jackson St., Suite 680  
Dallas, Texas 75202  
214-653-2021  
[sbe@dallascounty.org](mailto:sbe@dallascounty.org)**

**<https://www.dallascounty.org/departments/small-business-enterprise/>**



# QUESTIONS?

