

# West Nile Virus

## WEST NILE VIRUS CASES 2005—2012



### Community Involvement

The Mosquito management program benefits from the public's observations in their neighborhoods. Residents can report any mosquito activity by contacting their city's mosquito control.

Generally, mosquitoes are classified as nuisance or disease carrying mosquitoes. There are more than 30 mosquito species in Dallas County, but there is one principle vector of West Nile Virus, the southern house mosquito (*Culex quinquefasciatus*). This mosquito overwinters as an adult and is active from spring to fall. As the name implies it readily enters homes and prefers highly-organic standing water especially in urban areas around the home. It feeds during late night hours mostly on birds but will occasionally feed on mammals including humans.



DCHHS staff examine a water sample for larvae at a home in Duncanville.

### 2005—2012 HUMAN CASES

	2005	2006	2007	2008	2009	2010	2011	2012
Neuroinvasive	24	67	11	8	13	0	2	173
Deaths	1	4	0	0	1	0	0	20
West Nile Fever	20	37	12	1	3	0	0	225
Total Cases	44	104	23	9	16	0	2	398

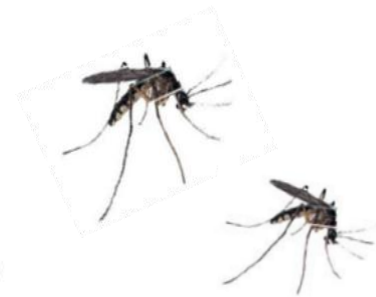


### YOUR HEALTH

Have a question about past mosquito activity? Call the Environmental Health division at 214-819-2115.

### 2005-2012 MOSQUITO POSITIVES

2005	2006	2007	2008	2009	2010	2011	2012
189	185	115	35	126	1	7	270



**DCHHS**  
Safe families, healthy lives.